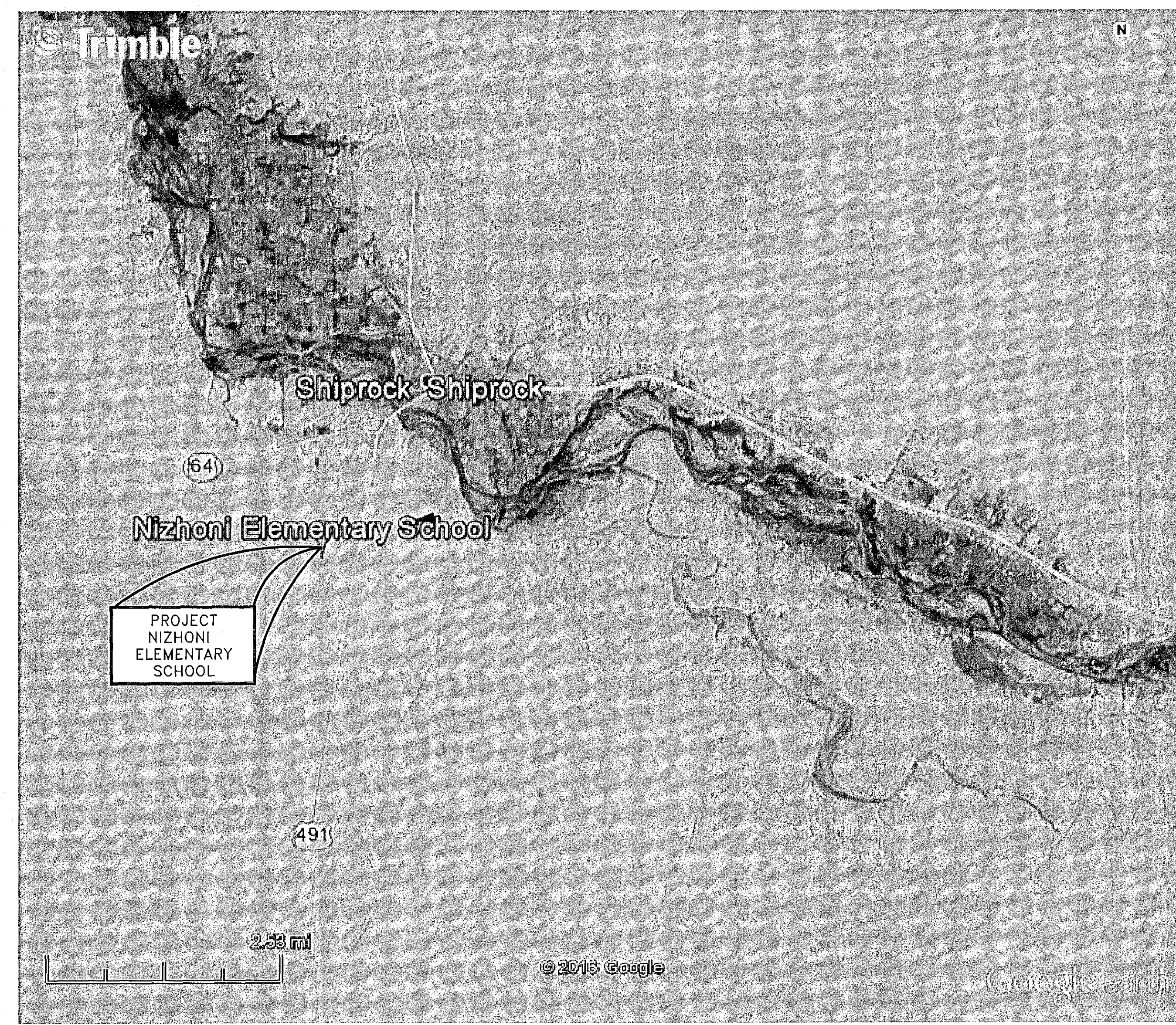


# ACCESS IMPROVEMENTS ONE WAY TRAFFIC CIRCULATION FOR NIZHONI ELEMENTARY SCHOOL CENTRAL CONSOLIDATED SCHOOL DISTRICT No. 22 SHIPROCK, NEW MEXICO

- LEGEND**
- EXISTING RIGHT OF WAY LINE
  - EXISTING UNDERGROUND TELEPHONE LINE
  - EXISTING WATER LINE
  - w2" EXISTING 2" WATER LINE
  - w2.5" EXISTING 2.5" WATER LINE
  - w3" EXISTING 3" WATER LINE
  - w4" EXISTING 4" WATER LINE
  - w6" EXISTING 6" WATER LINE
  - w8" EXISTING 8" WATER LINE
  - w3/4" NEW 3/4" WATER LINE
  - w2" NEW 2" WATER LINE
  - w2.5" NEW 2.5" WATER LINE
  - w3" NEW 3" WATER LINE
  - w4" NEW 4" WATER LINE
  - w6" NEW 6" WATER LINE
  - w8" NEW 8" WATER LINE
  - XXX EXISTING FENCE LINE
  - G NMGC EXISTING NEW MEXICO GAS CO. GAS LINE
  - NMGC2" EXISTING 2" NEW MEXICO GAS CO. GAS LINE
  - GVHP6" EXISTING 6" GVHP NEW MEXICO GAS CO. GAS LINE
  - ENTG EXISTING ENTERPRISE GAS LINES
  - XXXX EXISTING MAJOR CONTOUR LINE
  - EXISTING MINOR CONTOUR LINE
  - OHT EXISTING OVERHEAD TELEPHONE LINE
  - EXISTING UNDERGROUND ELECTRIC LINE
  - OHE EXISTING OVERHEAD ELECTRIC LINE
  - EXISTING EDGE OF ROAD WAY
  - PP EXISTING POWER POLE
  - TP EXISTING TELEPHONE POLE
  - SP EXISTING SERVICE POLE
  - DP EXISTING DROP POLE
  - EXISTING POLE ANCHOR
  - EXISTING GAS VALVE MANHOLE
  - EXISTING WATER VALVE MANHOLE
  - EXISTING FIRE HYDRANT
  - EXISTING/NEW WATER METER
  - EXISTING WATER VALVE
  - EXISTING FIBER OPTIC MANHOLE
  - EXISTING TELEPHONE MANHOLE
  - EXISTING GAS METER
  - EXISTING RIGHT OF WAY MARKER
  - EXISTING FOUND REBAR
  - EXISTING ROAD SIGN
  - EXISTING MILE MARKER SIGN
  - EXISTING PRIVATE MAILBOX
  - EXISTING GAS VALVE
  - EXISTING IRRIGATION VALVE
  - NEW WATER VALVE
  - NEW WATER VALVE
  - HIGHWAY MEMORIAL



- SHEET INDEX**
- SHEET No. 1 EXISTING SITE AND DEMOLITION PLAN
  - SHEET No. 2 SITE PLAN FOR ONE WAY CIRCULATION
  - SHEET No. 3 DIMENSION CONTROL PLAN
  - SHEET No. 4 PLAN AND PROFILE NEW ACCESS ROAD
  - SHEET No. 5 PLAN AND PROFILE NEW ACCESS ROAD
  - SHEET No. 6 CONSTRUCTION DETAILS



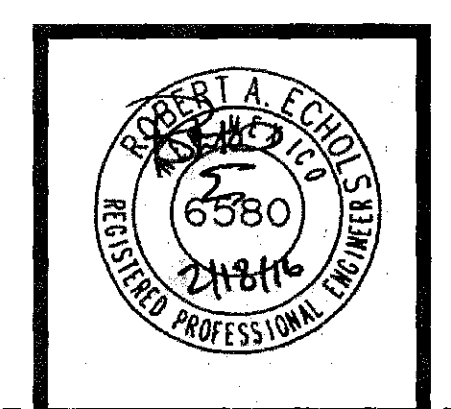
## MARCH 2016

- SCHOOL BOARD MEMBERS**
- INTERM SUPERINTENDENT - DR. COLLEEN BOWMAN
  - DISTRICT 3, BOARD MEMBER - CHARLIE JONES
  - DISTRICT 5, BOARD MEMBER - RUTHDA THOMAS
  - DISTRICT 4, BOARD MEMBER - CHRISTINA ASPAUS
  - DISTRICT 1, BOARD MEMBER - RANDY MANNING
  - DISTRICT 2, BOARD MEMBER - ADAM BESAYE

**CHENEY WALTERS ECHOLS & ASSOCIATES**  
ENGINEERS • SURVEYORS  
909 W. APACHE • FARMINGTON, NEW MEXICO 87401 • (505)327-3303

DATE	REVISIONS	BY

DATE: \_\_\_\_\_  
ENGINEER: \_\_\_\_\_







KEYED NOTES:

- 1 REMOVE EXISTING CURB AND GUTTER PARKING ISLAND. REPLACE WITH NEW 2-1/2" ASPHALT ON 6" BASE COURSE. MATCH ADJACENT FINISH GRADE ELEVATIONS.
- 2 REMOVE ALL EXISTING PARKING STRIPES AND MARKED HANDICAP PARKING.
- 3 REMOVE ALL EXISTING DIRECTIONAL ARROWS AND LETTERING ON PAVEMENT IN EXISTING DRIVE LANE AND PARKING LOT.
- 4 REMOVE 16.0'± OF EXISTING CURB AND GUTTER FOR NEW ONE-WAY DRIVE AISLE AS SHOWN ON SHEET No. 2.
- 5 REMOVE EXISTING PARKING STRIPES WITHIN HATCHED AREA SHOWN. ASPHALT PAVING TO REMAIN.
- 6 OWNER TO VERIFY ALIGNMENT AND DEPTH OF EXISTING WATER LINE PRIOR TO CONSTRUCTION OF NEW ACCESS ROAD AS SHOWN ON SHEET No. 2.
- 7 REMOVE 72.0'± OF EXISTING FENCE FOR NEW ACCESS ROAD TO BE INSTALLED.
- 8 REMOVE 20.0'± CONCRETE SIDEWALK TO INSTALL NEW HANDICAP RAMP AS SHOWN ON SHEET No. 2.
- 9 REMOVE 90.0'± OF EXISTING CURB AND GUTTER FOR NEW ONE-WAY DRIVE AISLE AND PARKING AS SHOWN ON SHEET No. 2.

DATE	REVISION	BY

PRINTED: March 04, 2016  
FILE: D:\DWG-HWS\2015\15105\15105SET.dwg

**CHENEY-WALTERS-ECHOLS**  
ENGINEERS • SURVEYORS  
909 W. APACHE • FARMINGTON, NEW MEXICO 87401 • (505)327-3303

EXISTING SITE DEMOLITION PLAN  
NIZHONI ELEMENTARY SCHOOL  
CENTRAL CONSOLIDATED SCHOOL DISTRICT No. 22  
SHIPROCK, NEW MEXICO

DATE:02/17/2016  
DRAWN BY: HWS  
PROJ. 15105  
SCALE:1" = 40'  
FILE:15105SET  
SHEET  
1  
OF  
6





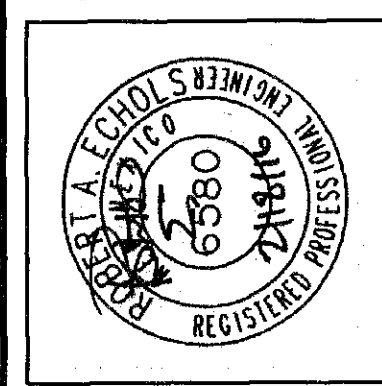
# KEYED NOTES:

- 1 EXISTING 2 - 18" STEEL PIPE SWING GATES.
- 2 INSTALL NEW HANDICAP RAMP. SEE DETAIL 2/6.
- 3 EXISTING 4.0' HIGH CHAIN LINK FENCE.
- 4 INSTALL NEW SIGN WITH SIGN FACE "STUDENT DROPOFF/PICKUP".
- 5 INSTALL NEW SIGN WITH SIGN FACE "TO VISITOR PARKING".
- 6 INSTALL NEW SIGN WITH SIGN FACE "VISITOR PARKING".
- 7 INSTALL NEW SIGN WITH SIGN FACE "ONE WAY DO NOT ENTER".
- 8 INSTALL NEW STOP SIGN AND "ONE WAY DO NOT ENTER" ON SAME POST.
- 9 INSTALL HANDICAP PARKING SIGN AT EACH STALL. 4 EACH NEEDED. SEE DETAIL 3/6.
- 10 ALL HANDICAP PARKING SPACES AND ACCESS ISLES SHALL BE PAINTED WITH 4" WIDE SAFETY BLUE MARKINGS INCLUDING HANDICAP SYMBOLS. SEE DETAIL 3/6.
- 11 NEW PAINTED ACCESSIBLE ROUTE TO EXISTING HANDICAP RAMP. PAINTED ACCESS SHALL BE 8.0' WIDE WITH 18" WHITE BARS 24" CLEAR BETWEEN.
- 12 12" WIDE YELLOW PAINTED STRIPE FOR SEPARATION OF DROPOFF/PICKUP LANE AND ACCESS LANE TO VISITOR PARKING.
- 13 STRIPE THIS AREA AS PART OF THE HANDICAP PAINTED AREAS. SEE NOTE No. 10.
- 14 NEW 4" WIDE WHITE PAINTED PARKING STRIPE AT 60° ANGLE 9.0' WIDE AND MINIMUM 20.0' DEEP. SEE SHEET No. 3 FOR DIMENSIONAL LAYOUT.
- 15 NEW 6" CONCRETE ONE WAY ACCESS FROM VISITOR PARKING AREA WITH NEW CURB AND GUTTER AT 16.0' BC-BC. CURB WIDTH IS 1.5' FROM BACK OF CURB TO LIP OF GUTTER TO MATCH EXISTING CURB.
- 16 NEW 97.0' ± - 8" WIDE BY 6" HIGH ASPHALT CURB PLACED ON EXISTING ASPHALT GRADE ALONG NEW STRIPED PARKING AREA.
- 17 SEE PLAN AND PROFILE SHEETS FOR THE INSTALLATION OF NEW ACCESS ROAD. SEE DETAIL 7/6 FOR ROAD SECTION.
- 18 INSTALL 11 EACH 6" BUMPER BLOCKS. CONCRETE BUMPER. SEE DETAIL 6/6. THE NEW RECYCLED MATERIAL FIBER BUMPERS MAY BE SUBSTITUTED.
- 19 NEW PAINTED ACCESSIBLE ROUTE TO NEW HANDICAP RAMP. PAINTED ACCESS SHALL BE 8.0' WIDE WITH 18" WHITE BARS 24" CLEAR BETWEEN.
- 20 NEW 5'-0" CHAIN LINK FENCE.
- 21 CONNECT NEW 5.0' CHAIN LINK FENCE TO EXISTING 8.0' CHAIN LINK FENCE.
- 22 INSTALL DELINEATION MARKER AT 20.0' O.C. ALONG CENTER STRIPE 9 EACH.
- 23 INSTALL NEW STOP SIGN.
- 24 NEW ASPHALT PAVING FOR NEW PARKING SHALL MATCH EXISTING FINISH GRADES ADJACENT TO NEW PAVING ALONG EXISTING CURB REMOVAL. NEW CURB AND GUTTER TO MATCH EXISTING CROSS SECTION OF CURB AND GUTTER.
- 25 NEW 5.0' WIDE CONCRETE SIDEWALK TO CONNECT TO EXISTING CONCRETE SIDEWALK AND MATCH TOP OF NEW CURB GRADES.

DATE	REVISION	BY

**CHENEY-WALTERS-ECHOLS**  
ENGINEERS • SURVEYORS

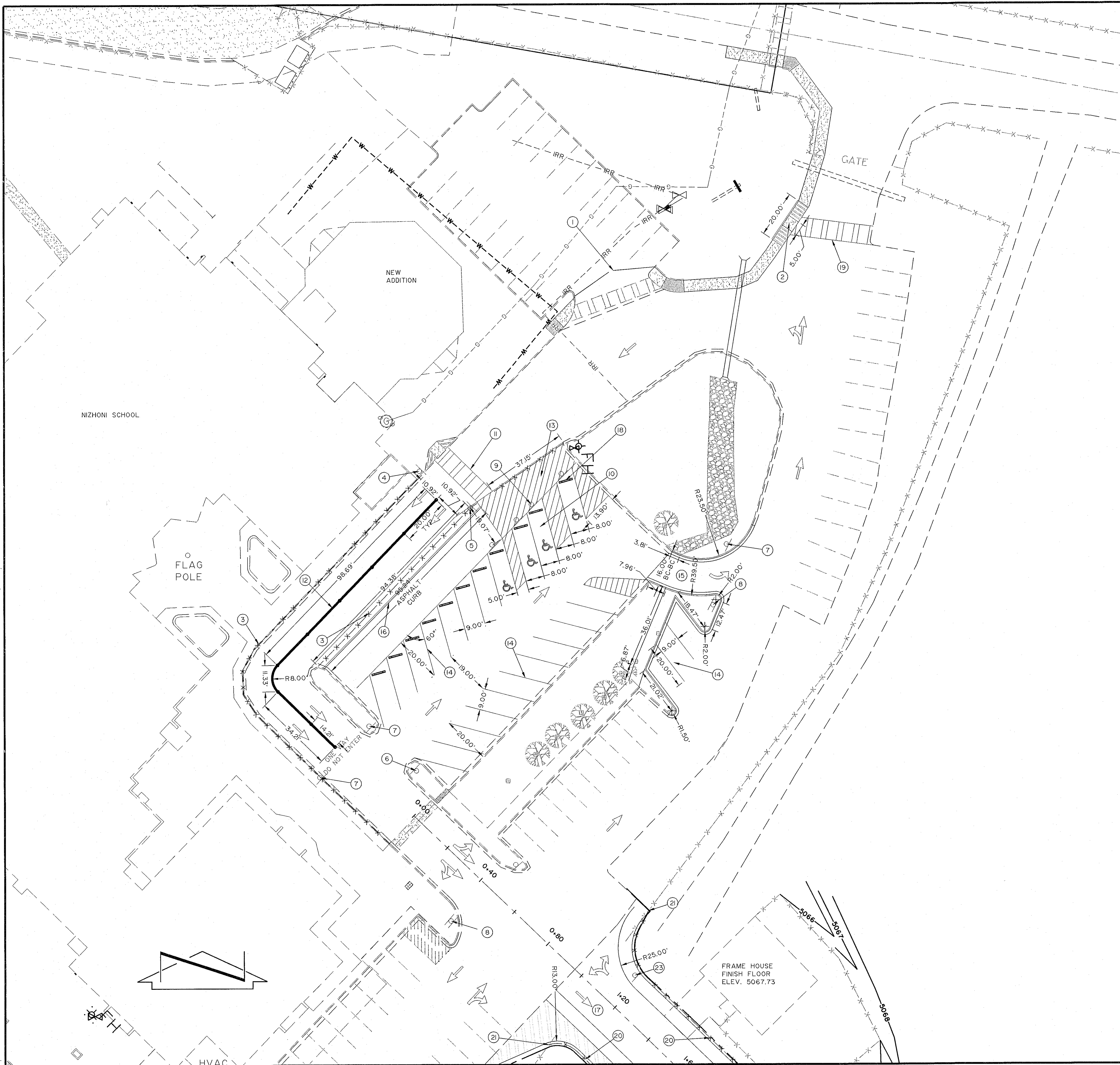
909 W. APACHE • FARMINGTON, NEW MEXICO 87401 • (505)327-3303



SITE PLAN FOR ONE-WAY CIRCULATION  
NIZHONI ELEMENTARY SCHOOL  
CENTRAL CONSOLIDATED SCHOOL DISTRICT No. 22  
SHIPROCK, NEW MEXICO

DATE: 02/17/2016  
DRAWN BY: HWS  
PROJ. 15105  
SCALE: 1" = 40'  
FILE: 15105SET  
SHEET  
2  
OF  
6





KEYED NOTES:

- 1 EXISTING 2 - 18" STEEL PIPE SWING GATES.
- 2 INSTALL NEW HANDICAP RAMP. SEE DETAIL 2/6.
- 3 EXISTING 4.0' HIGH CHAIN LINK FENCE.
- 4 INSTALL NEW SIGN WITH SIGN FACE "STUDENT DROPOFF/PICKUP".
- 5 INSTALL NEW SIGN WITH SIGN FACE "TO VISITOR PARKING".
- 6 INSTALL NEW SIGN WITH SIGN FACE "VISITOR PARKING".
- 7 INSTALL NEW SIGN WITH SIGN FACE "ONE WAY DO NOT ENTER".
- 8 INSTALL NEW STOP SIGN AND "ONE WAY GO NOT ENTER" ON SAME POST.
- 9 INSTALL HANDICAP PARKING SIGN AT EACH STALL. 4 EACH NEEDED. SEE DETAIL 3/6.
- 10 ALL HANDICAP PARKING SPACES AND ACCESS ISLES SHALL BE PAINTED WITH 4" WIDE SAFETY BLUE MARKINGS INCLUDING HANDICAP SYMBOLS. SEE DETAIL 3/6.
- 11 NEW PAINTED ACCESSIBLE ROUTE TO EXISTING HANDICAP RAMP. PAINTED ACCESS SHALL BE 8.0' WIDE WITH 18" WHITE BARS 24" CLEAR BETWEEN.
- 12 12" WIDE YELLOW PAINTED STRIPE FOR SEPARATION OF DROPOFF/PICKUP LANE AND ACCESS LANE TO VISITOR PARKING.
- 13 STRIPE THIS AREA AS PART OF THE HANDICAP PAINTED AREAS. SEE NOTE No. 10.
- 14 NEW 4" WIDE WHITE PAINTED PARKING STRIPE AT 60° ANGLE 9.0' WIDE AND MINIMUM 20.0' DEEP. SEE SHEET No. 3 FOR DIMENSIONAL LAYOUT.
- 15 NEW 6" CONCRETE ONE WAY ACCESS FROM VISITOR PARKING AREA WITH NEW CURB AND GUTTER AT 16.0' BC-BC. CURB WIDTH IS 1.5' FROM BACK OF CURB TO LIP OF GUTTER TO MATCH EXISTING CURB.
- 16 NEW 97.0' ± - 8" WIDE BY 6" HIGH ASPHALT CURB PLACED ON EXISTING ASPHALT GRADE ALONG NEW STRIPED PARKING AREA.
- 17 SEE PLAN AND PROFILE SHEETS FOR THE INSTALLATION OF NEW ACCESS ROAD. SEE DETAIL 7/6 FOR ROAD SECTION.
- 18 INSTALL 11 EACH 6' BUMPER BLOCKS, CONCRETE BUMPER. SEE DETAIL 6/6. THE NEW RECYCLED MATERIAL FIBER BUMPERS MAY BE SUBSTITUTED.
- 19 NEW PAINTED ACCESSIBLE ROUTE TO NEW HANDICAP RAMP. PAINTED ACCESS SHALL BE 8.0' WIDE WITH 18" WHITE BARS 24" CLEAR BETWEEN.
- 20 NEW 5'-0" CHAIN LINK FENCE.
- 21 CONNECT NEW 5.0' CHAIN LINK FENCE TO EXISTING 8.0' CHAIN LINK FENCE.
- 22 INSTALL DELINEATION MARKER AT 20.0' O.C. ALONG CENTER STRIPE 9 EACH.
- 23 INSTALL NEW STOP SIGN.
- 24 NEW ASPHALT PAVING FOR NEW PARKING SHALL MATCH EXISTING FINISH GRADES ADJACENT TO NEW PAVING ALONG EXISTING CURB REMOVAL. NEW CURB AND GUTTER TO MATCH EXISTING CROSS SECTION OF CURB AND GUTTER.
- 25 NEW 5.0' WIDE CONCRETE SIDEWALK TO CONNECT TO EXISTING CONCRETE SIDEWALK AND MATCH TOP OF NEW CURB GRADES.

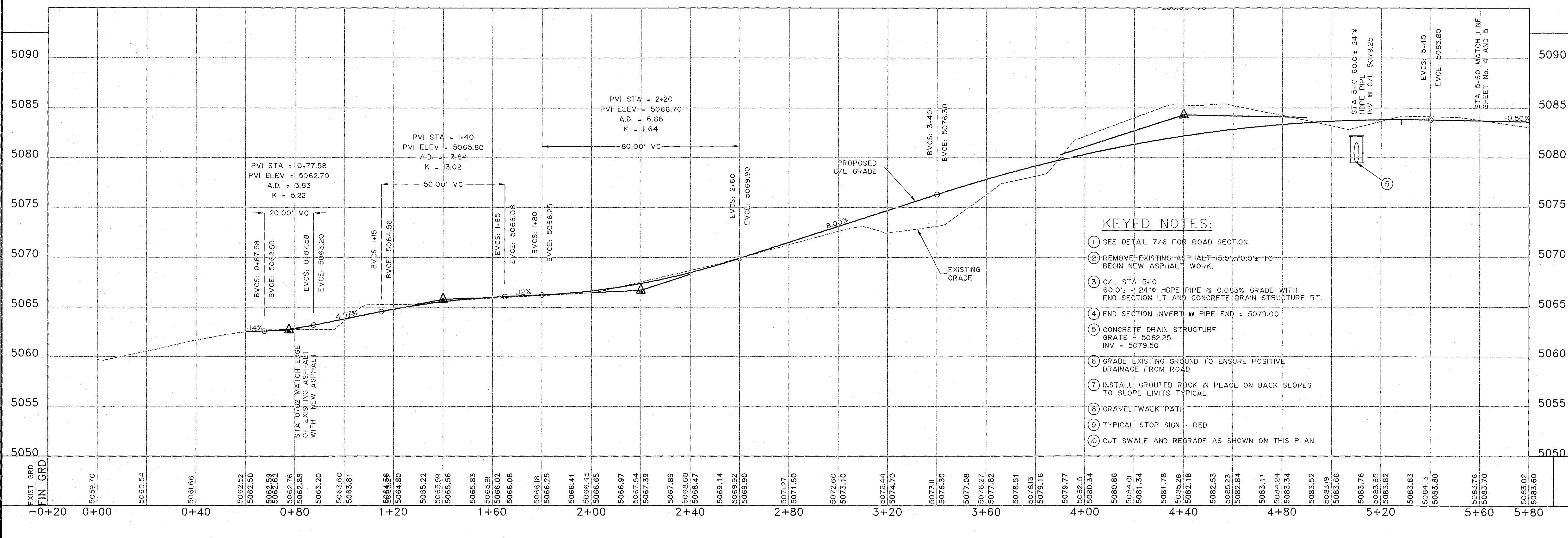
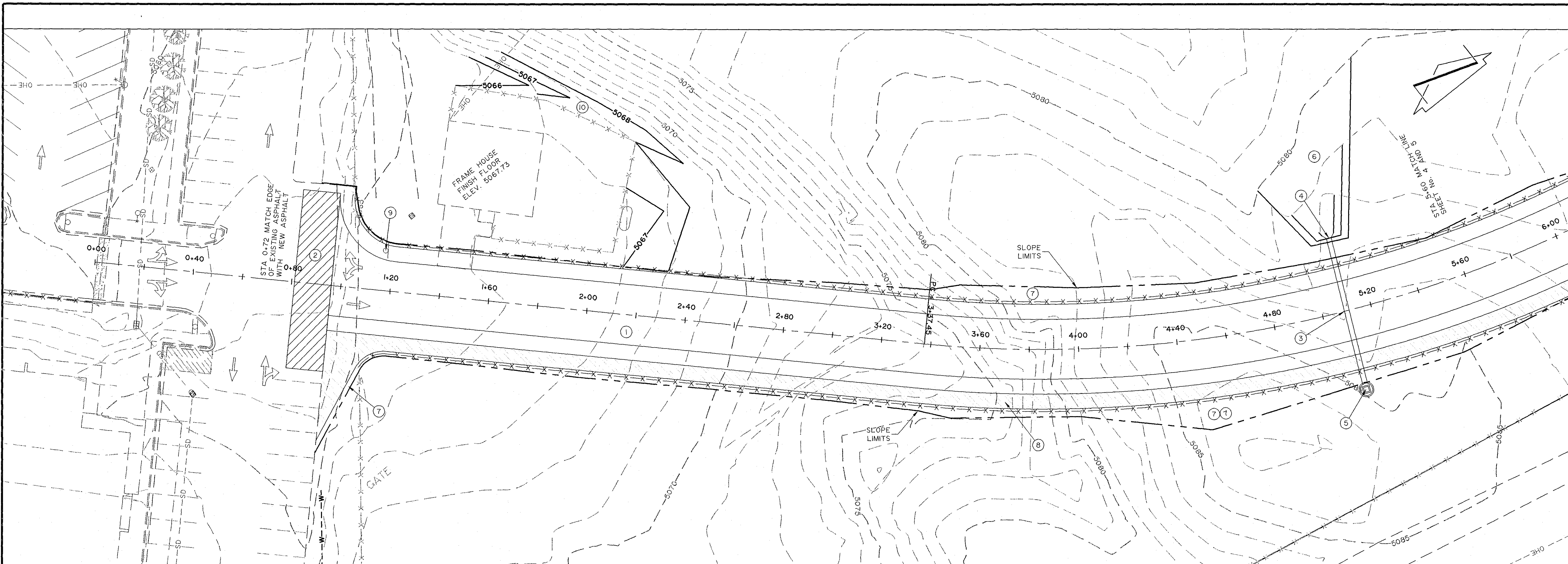
DATE	REVISION	BY

**CHENEY-WALTERS-ECHOLS**  
ENGINEERS • SURVEYORS

909 W. APACHE • FARMINGTON, NEW MEXICO 87401 • (505)327-3303

DIMENSION CONTROL PLAN FOR ONE-WAY CIRCULATION  
NIZHONI ELEMENTARY SCHOOL  
CENTRAL CONSOLIDATED SCHOOL DISTRICT No. 22  
SHIPROCK, NEW MEXICO

DATE: 02/17/2016  
DRAWN BY: HWS  
PROJ. 15105  
SCALE: 1" = 40'  
FILE: 15105SET  
SHEET  
3  
OF  
6



- KEYED NOTES:**
- ① SEE DETAIL 7/6 FOR ROAD SECTION.
  - ② REMOVE EXISTING ASPHALT 15.0'± TO 70.0'± TO BEGIN NEW ASPHALT WORK.
  - ③ C/L STA 5+10 60.0'± 24" HDPE PIPE @ 0.063% GRADE WITH END SECTION LT AND CONCRETE DRAIN STRUCTURE RT.
  - ④ END SECTION INVERT @ PIPE END = 5079.00
  - ⑤ CONCRETE DRAIN STRUCTURE GRADE = 5082.25 INV = 5079.50
  - ⑥ GRADE EXISTING GROUND TO ENSURE POSITIVE DRAINAGE FROM ROAD
  - ⑦ INSTALL GROUTED ROCK IN PLACE ON BACK SLOPES TO SLOPE LIMITS TYPICAL.
  - ⑧ GRAVEL WALK PATH
  - ⑨ TYPICAL STOP SIGN - RED
  - ⑩ CUT SWALE AND REGRADE AS SHOWN ON THIS PLAN.

**CHENEY WALTERS ECHOLS**  
ENGINEERS • SURVEYORS

909 W. APACHE • FARMINGTON, NEW MEXICO 87401 • (505)327-3303

DATE	REVISION	BY

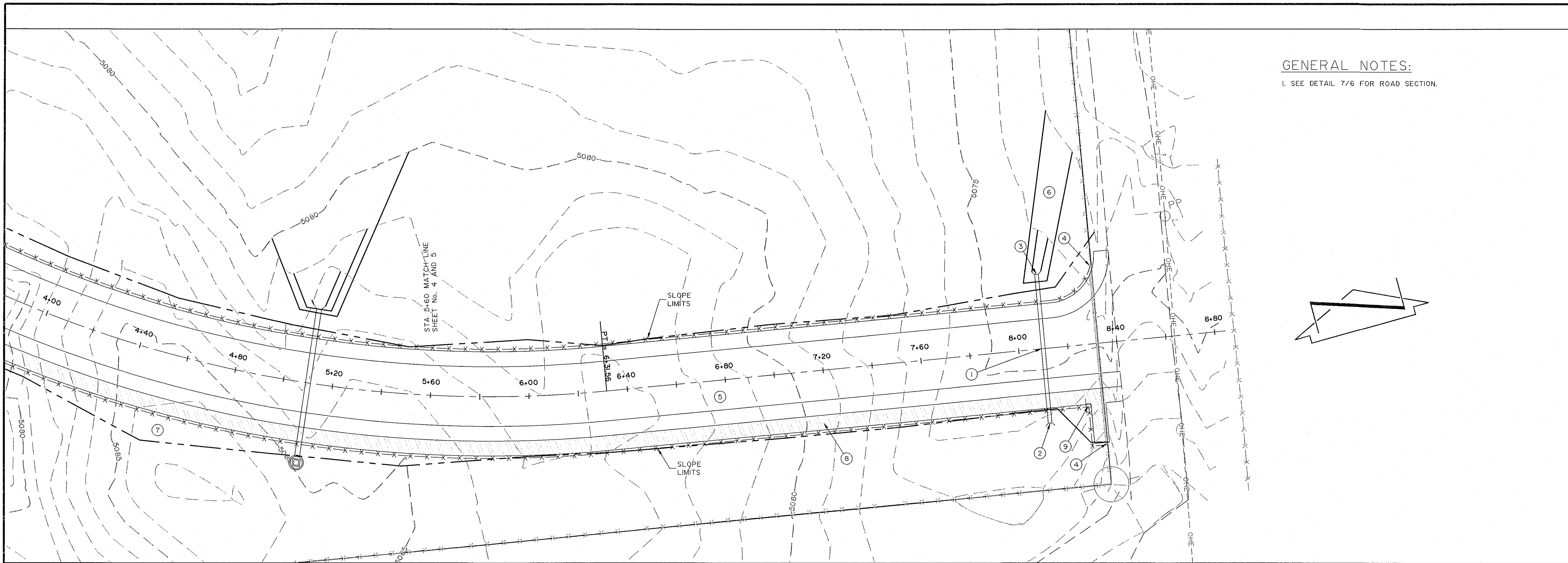
PRINTED: March 04, 2016  
FILE: D:\DWG-HWS\2015\15105\15105SET.dwg

**CENTRAL CONSOLIDATED SCHOOL DISTRICT No. 22**  
SHIPROCK, NEW MEXICO

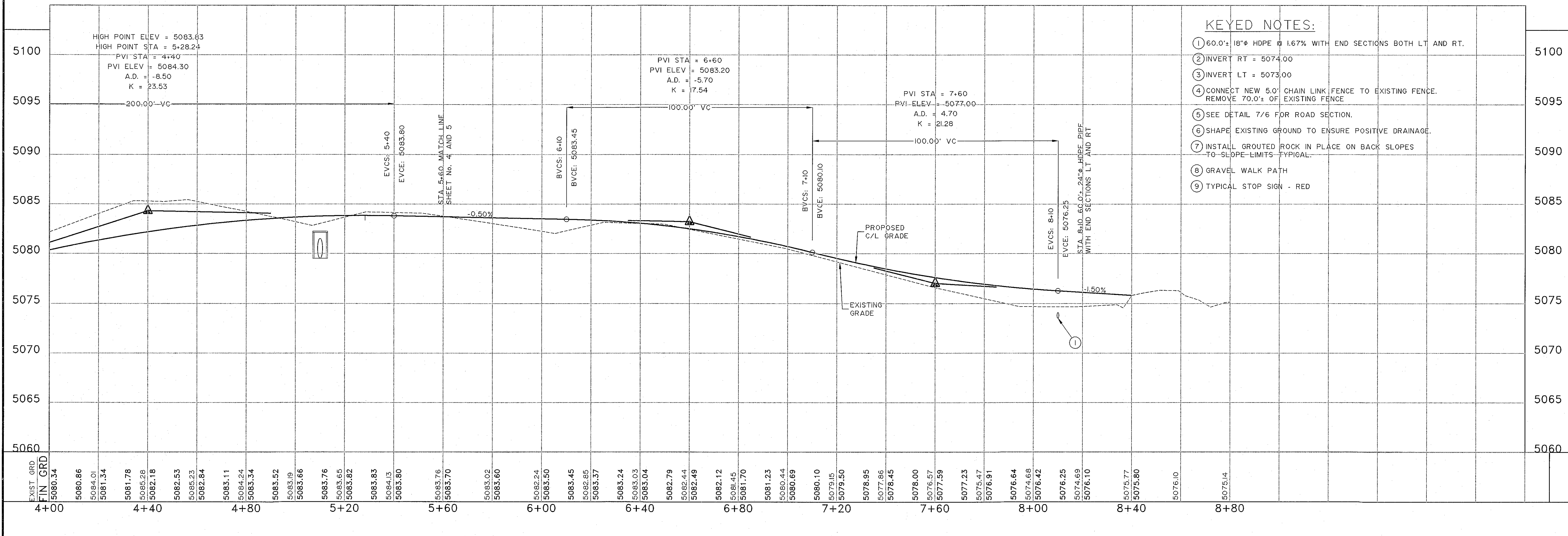
PLAN AND PROFILE ACCESS ROAD FOR ONE-WAY CIRCULATION  
NIZHONI ELEMENTARY SCHOOL

DATE: 02/17/2016  
DRAWN BY: HWS  
PROJ. 15105  
SCALE: 1" = 20'H, 5'V  
FILE: 15105SET  
SHEET  
4 OF 6





GENERAL NOTES:  
1. SEE DETAIL 7/6 FOR ROAD SECTION.



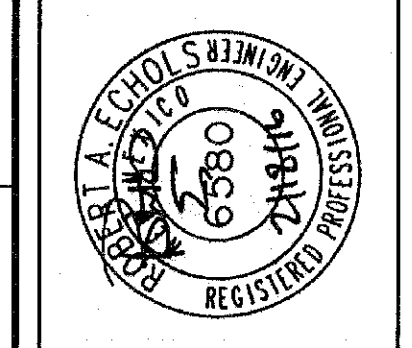
- KEYED NOTES:
- 1 60.0'± 18" HDPE @ 1.67% WITH END SECTIONS BOTH LT AND RT.
  - 2 INVERT RT = 5074.00
  - 3 INVERT LT = 5073.00
  - 4 CONNECT NEW 5.0' CHAIN LINK FENCE TO EXISTING FENCE. REMOVE 70.0'± OF EXISTING FENCE
  - 5 SEE DETAIL 7/6 FOR ROAD SECTION.
  - 6 SHAPE EXISTING GROUND TO ENSURE POSITIVE DRAINAGE.
  - 7 INSTALL GROUTED ROCK IN PLACE ON BACK SLOPES TO SLOPE LIMITS TYPICAL.
  - 8 GRAVEL WALK PATH
  - 9 TYPICAL STOP SIGN - RED

DATE	REVISION	BY

**CHENEY WALTERS ECHOLS**  
ENGINEERS & SURVEYORS

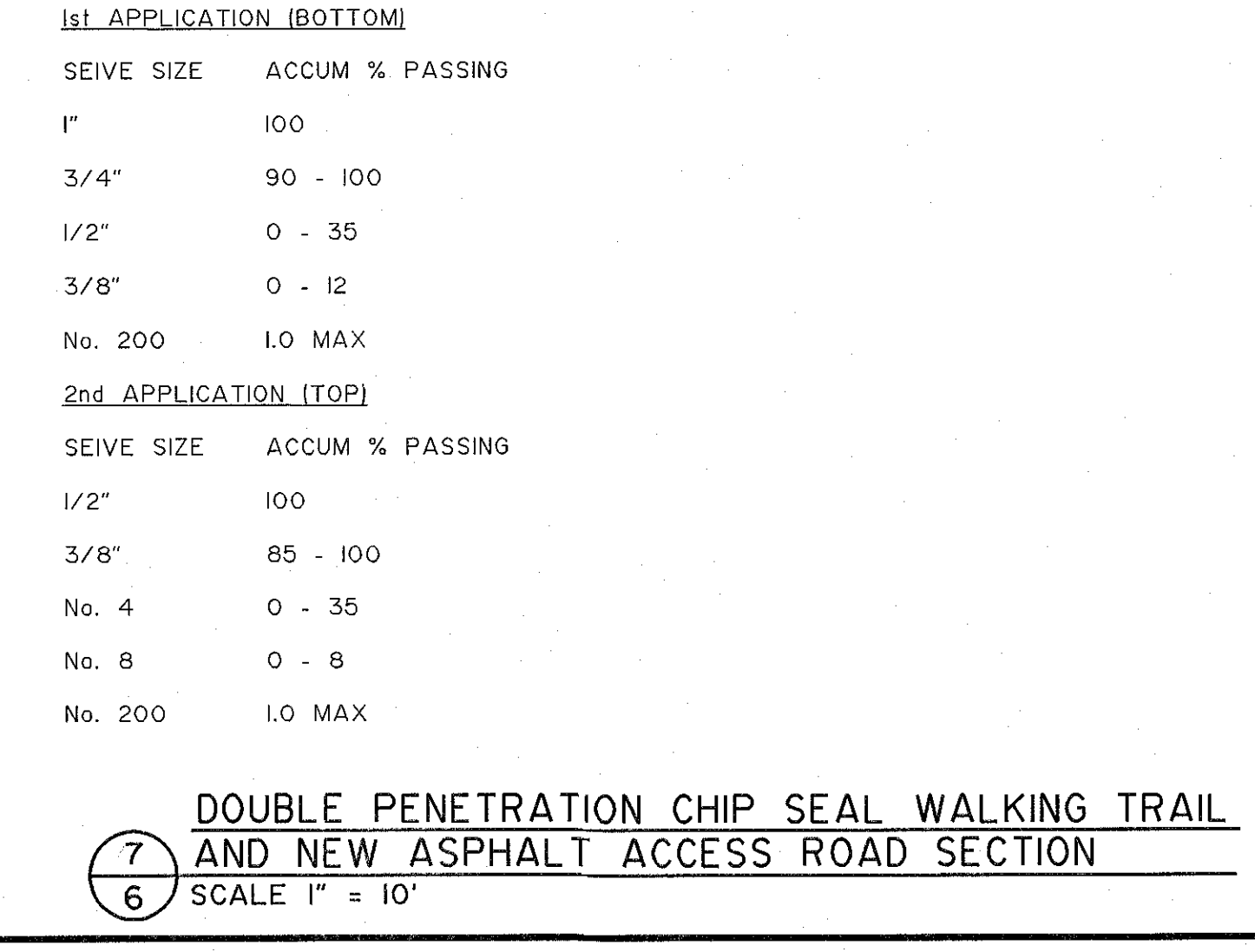
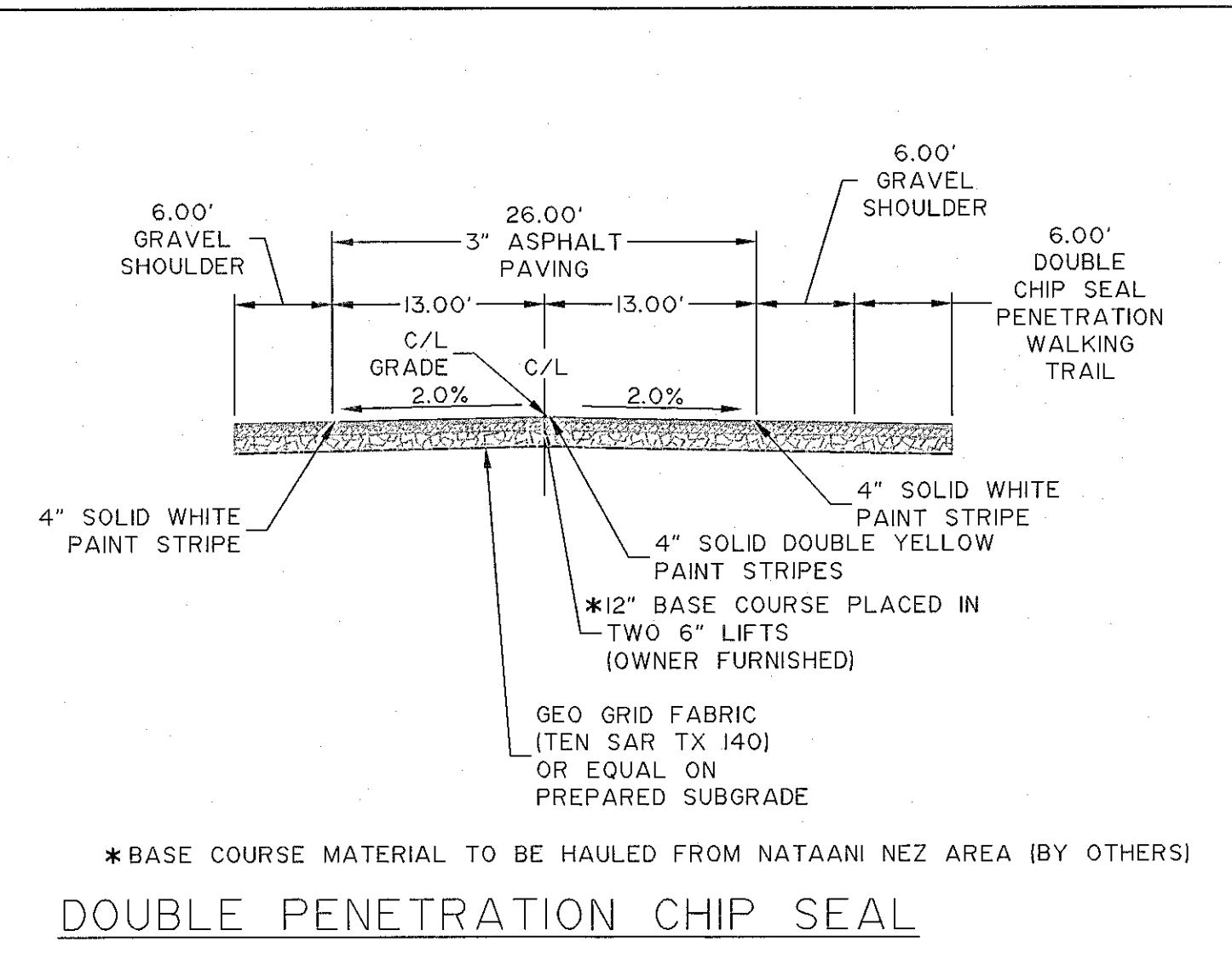
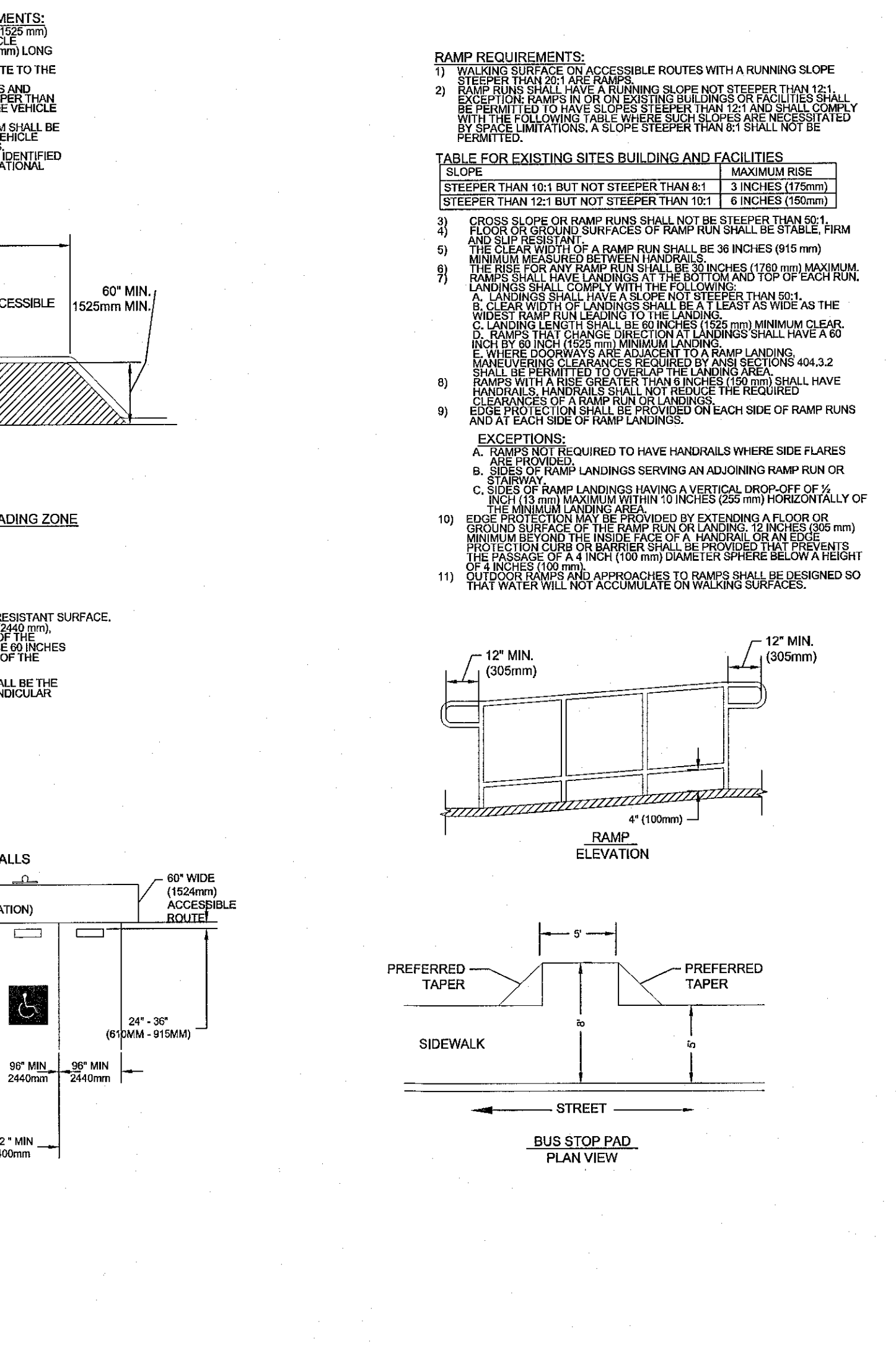
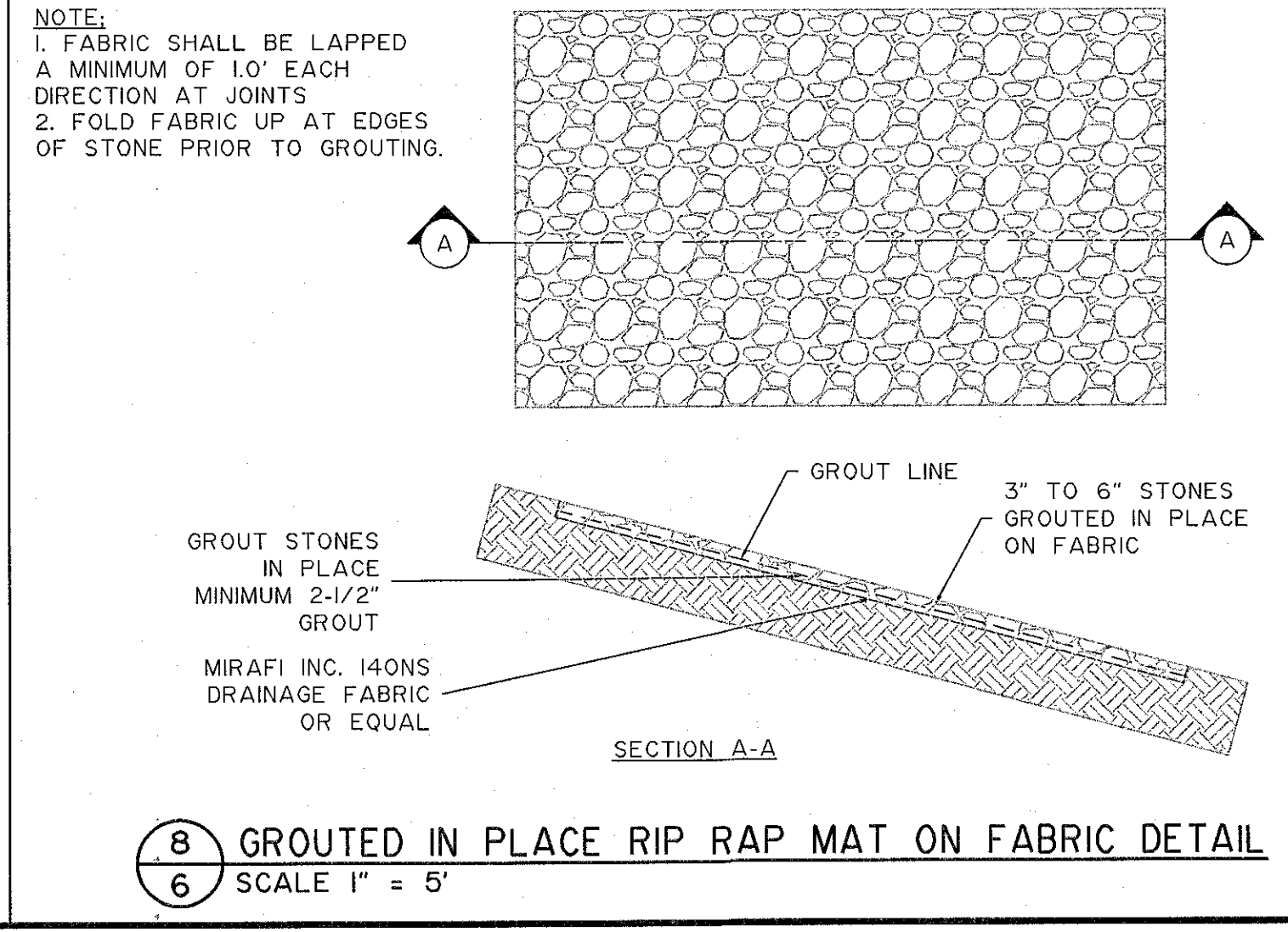
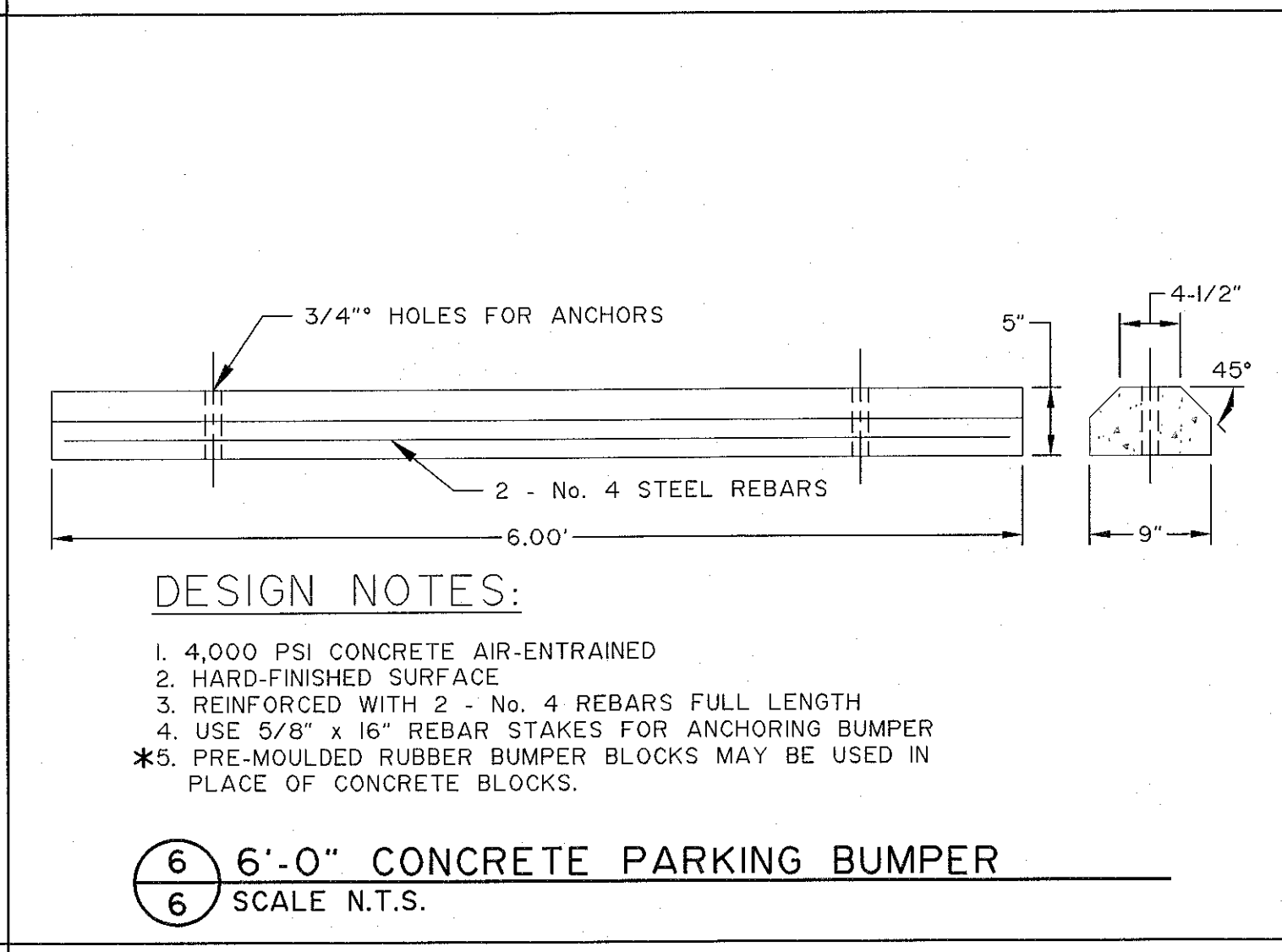
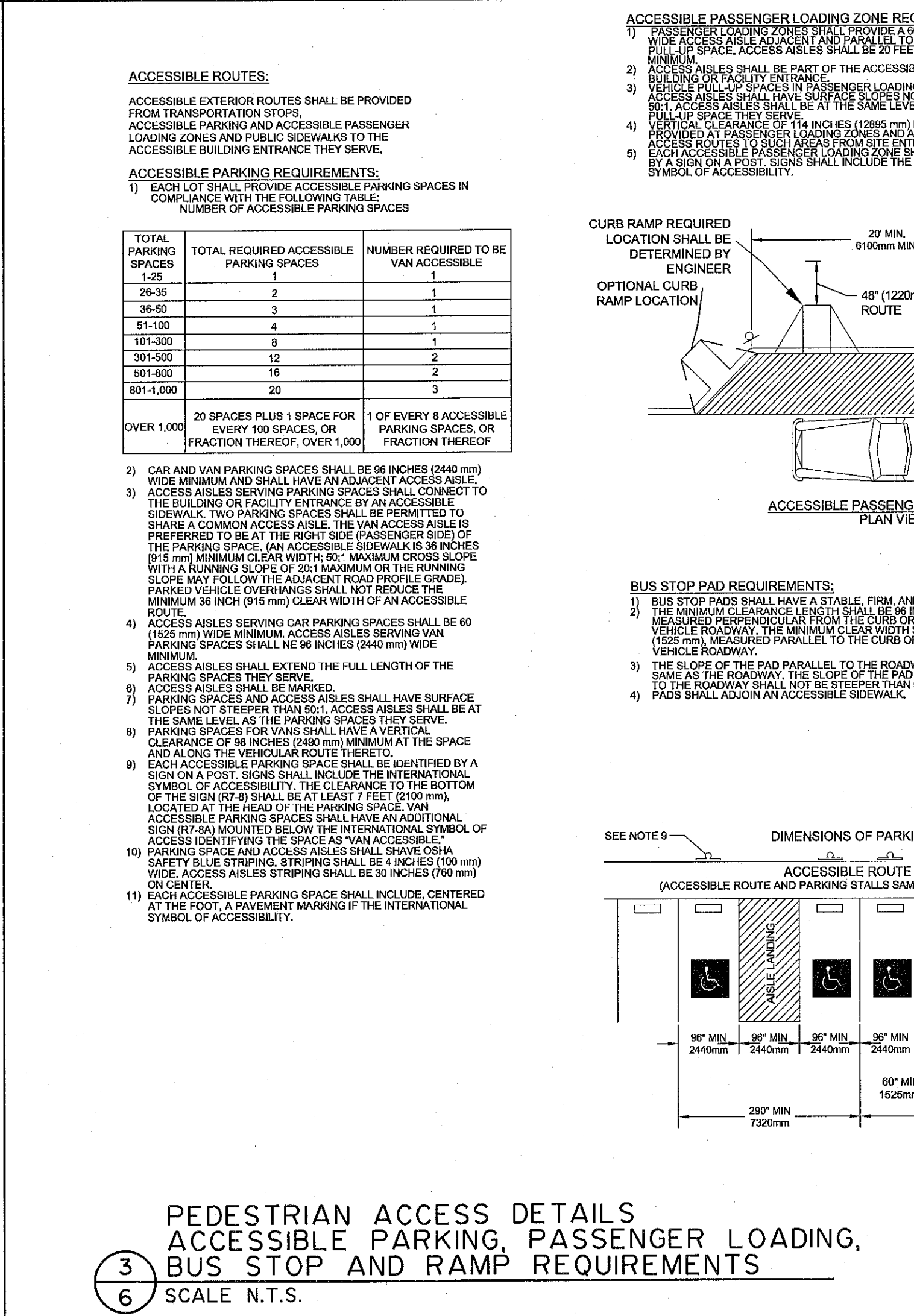
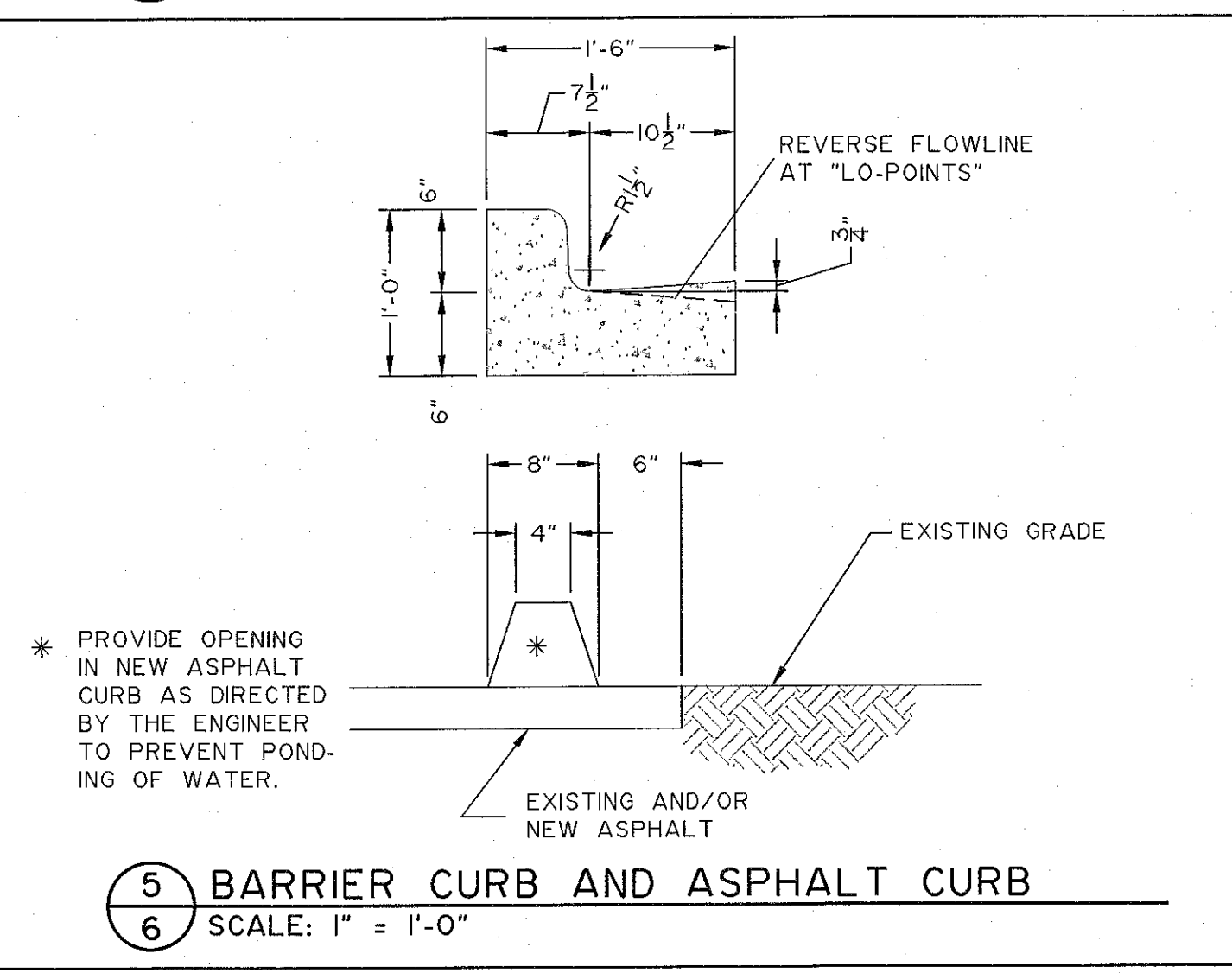
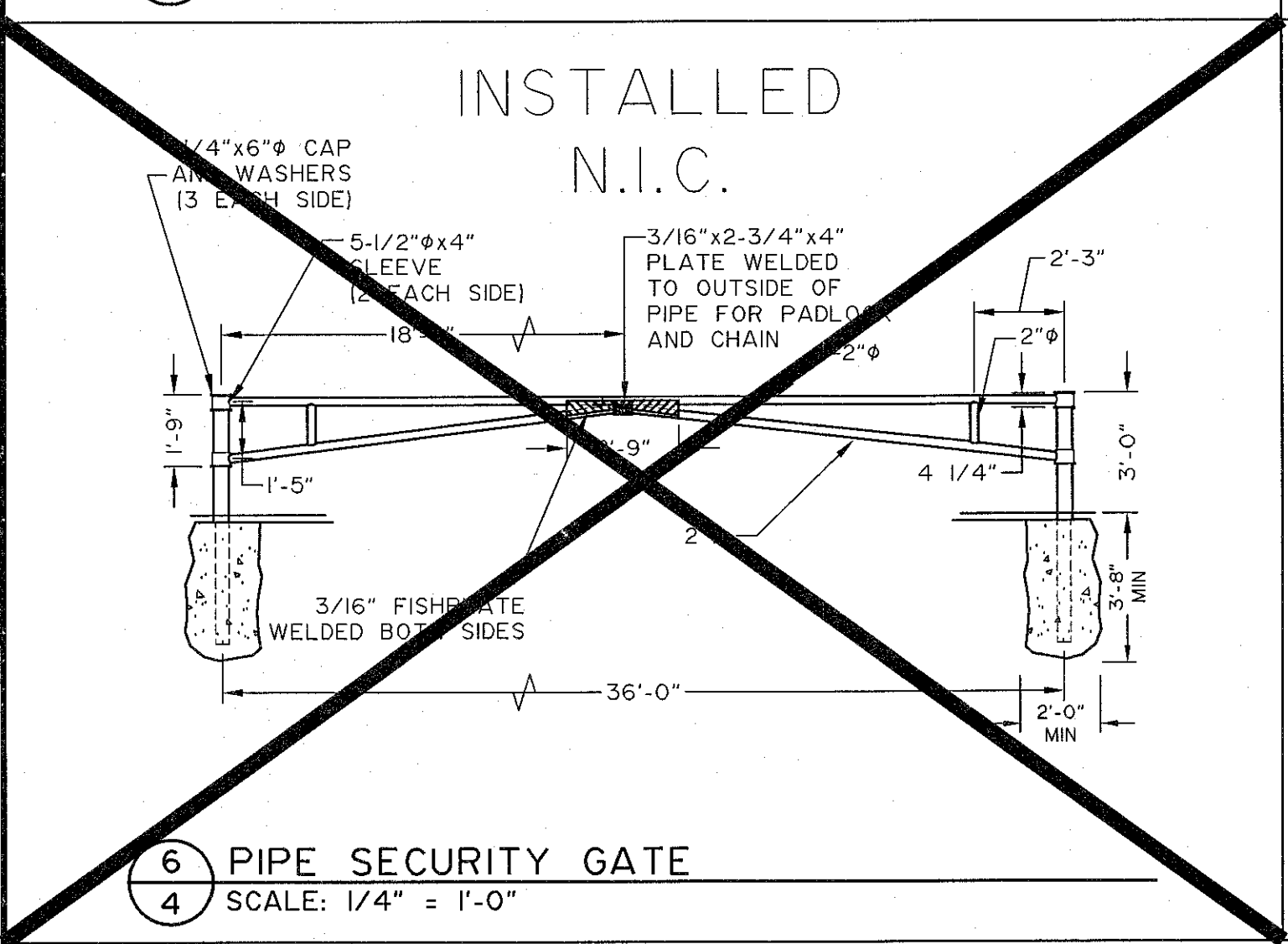
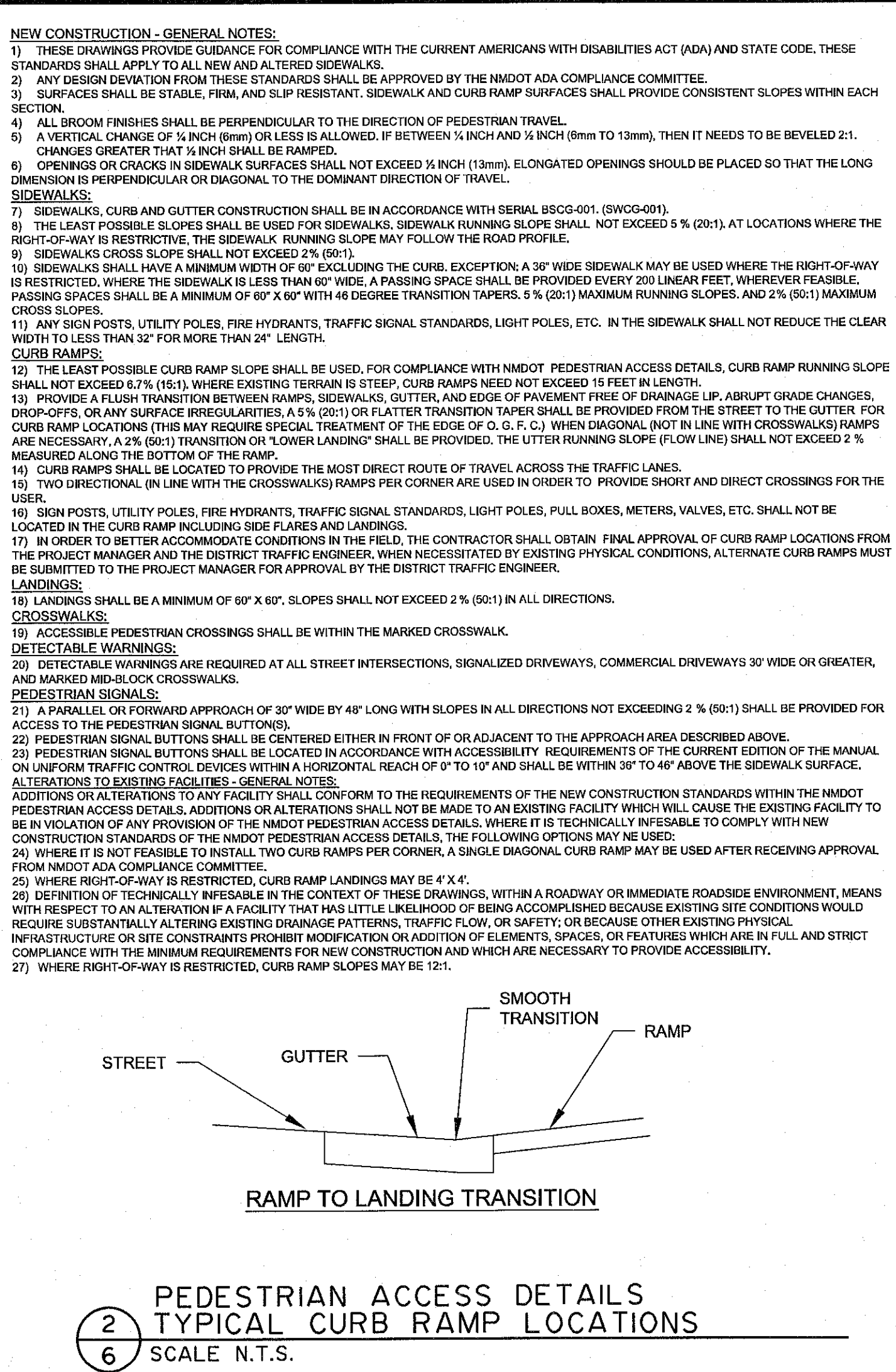
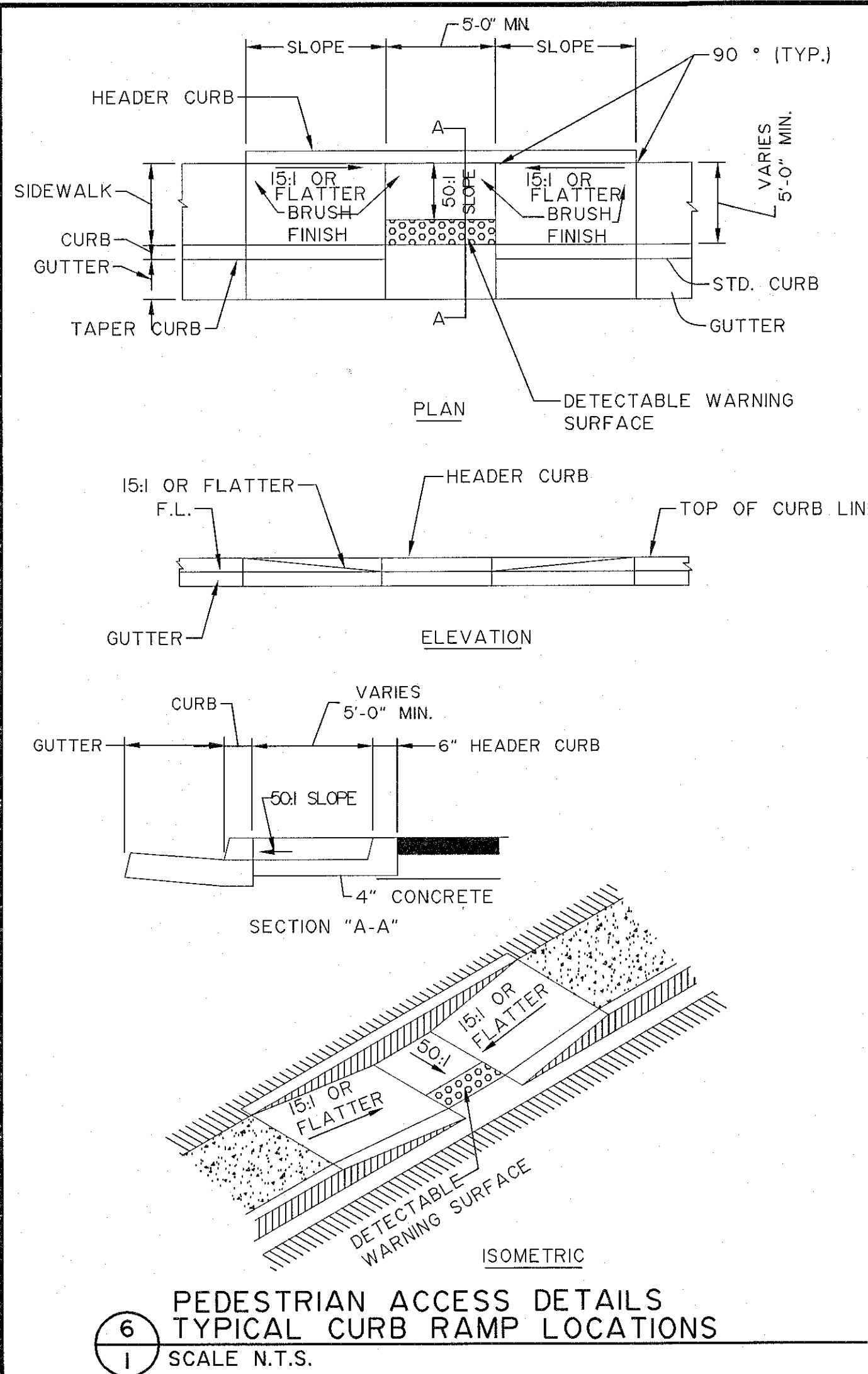
909 W. APACHE • FARMINGTON, NEW MEXICO 87401 • (505) 327-3303

PRINTED: March 04, 2016  
FILE: D:\DWG-HWS\15105\15105SET.dwg



PLAN AND PROFILE ACCESS ROAD FOR ONE-WAY CIRCULATION  
NIZHONI ELEMENTARY SCHOOL  
CENTRAL CONSOLIDATED SCHOOL DISTRICT No. 22  
SHIPROCK, NEW MEXICO

DATE: 02/17/2016  
DRAWN BY: HWS  
PROJ. 15105  
SCALE: 1" = 20'H, 5'V  
SHEET  
1 OF 6



CHENEY-WALTERS-ECHOLS ENGINEERS - SURVEYORS

908 W. APACHE • FARMINGTON, NEW MEXICO 87401 • (505)327-3303

DATE: 02/17/2016  
DRAWN BY: HWS  
PROJ. 15105  
SCALE: NOTED  
FILE: 15105SET SHEET

CONSTRUCTION DETAILS  
NIZHONI ELEMENTARY SCHOOL  
CENTRAL CONSOLIDATED SCHOOL DISTRICT No. 22  
SHIPROCK, NEW MEXICO