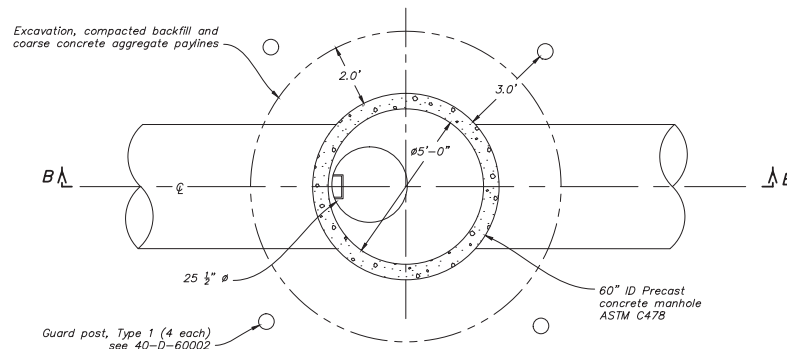
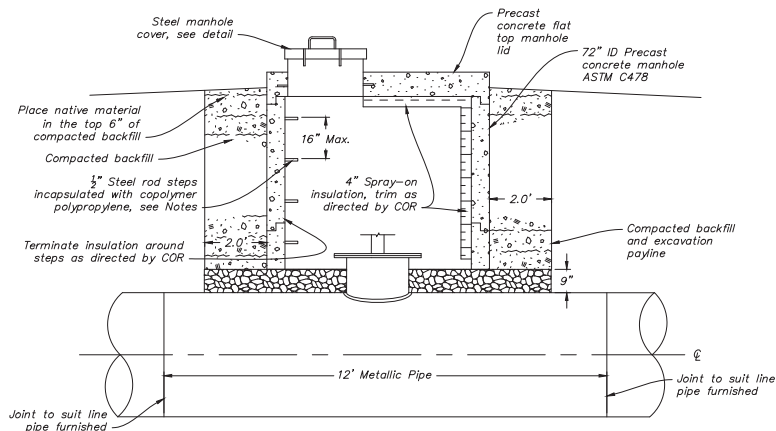


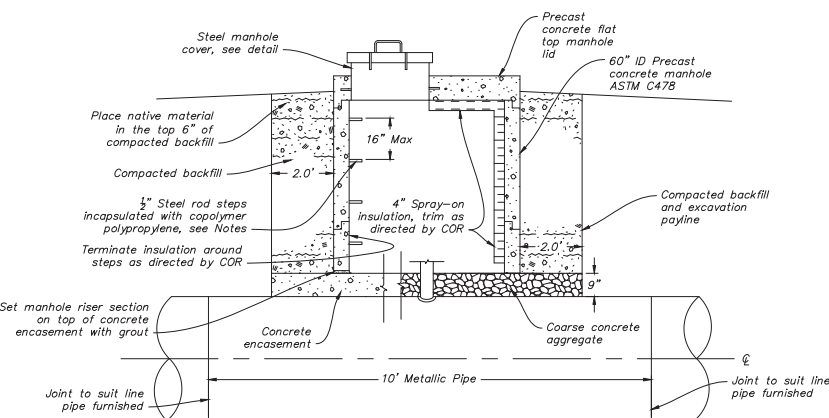
PLAN 72"Ø MANHOLE



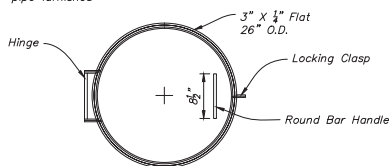
PLAN 60"Ø MANHOLE



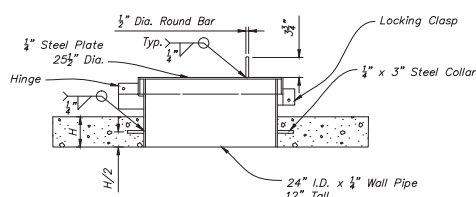
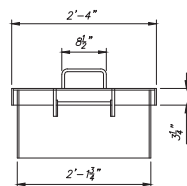
SECTION A-A



SECTION B-B

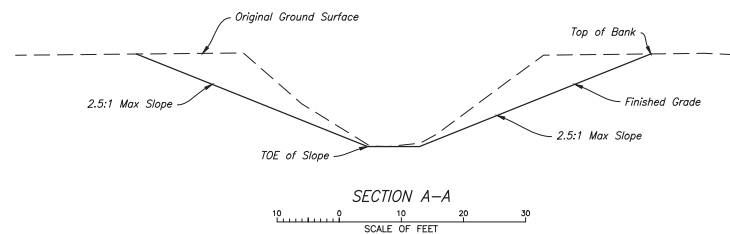
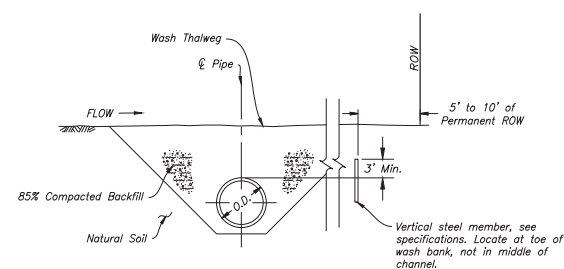
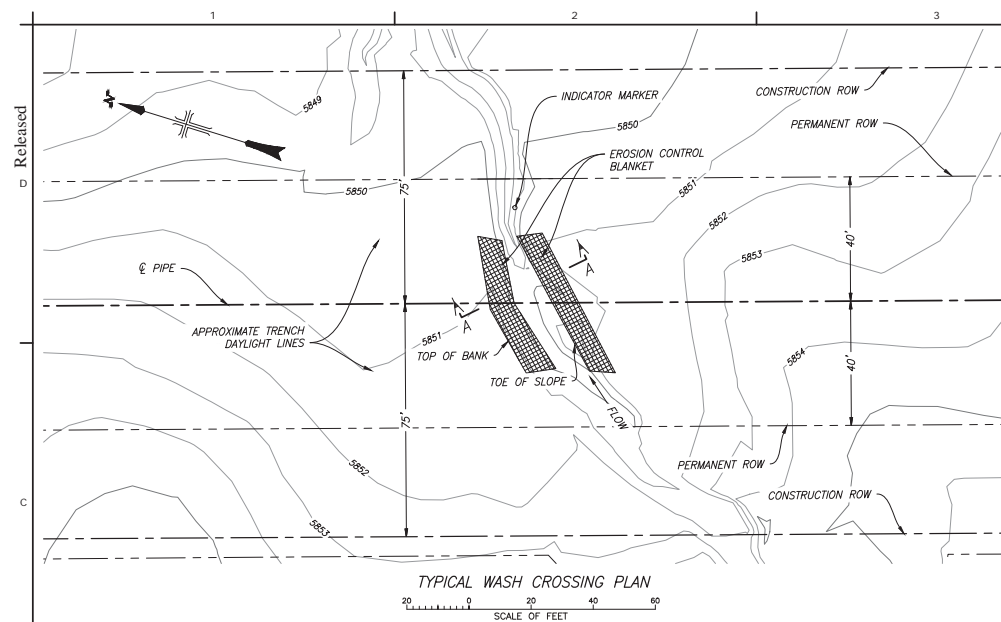


STEEL MANHOLE COVER DETAIL



NOTES

1. Manhole steps shall be made of $\frac{1}{2}$ " steel rod encapsulated with copolymer polypropylene or approved equal and shall conform to ASTM C478. Steps shall have minimum projections of 4-inches, spaced no more than 16" apart, minimum overall widths of 14 inches and anchored into the walls at least $\frac{3}{2}$ inches deep.
2. Steel manhole cover shall be provided with a lockable lid.
3. Drawing not to scale.

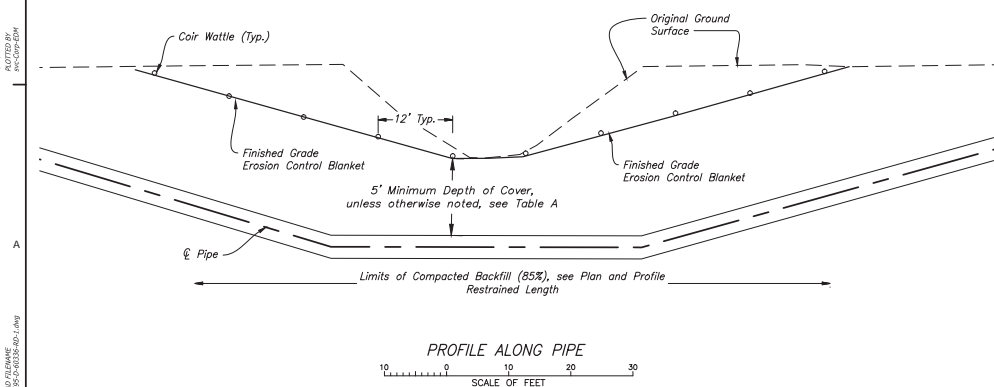


Wash Crossing Alignment Station	Minimum Cover Depth (ft)
90023+26	7
90077+09	6
90095+94	5
90097+40	7
90106+05	5
90124+68	5
90163+39	10
90205+24	5
90261+28	8
90283+24	10
90298+25	5
90376+25	10
90389+71	9
90401+39	6.5
90465+63	10
90525+15	6
90579+06	7.5
90609+15	10
90628+16	5
90675+96	6
90833+35	7
91186+26	9
11167+00	12

NOTES

- For General Notes, Symbols, Abbreviations, and Pipe Classification, see (60281).
- For mild wash slopes, (flatter than 3:1) bank treatment consists of compaction of trench backfill to in-situ density, shaped to the same slope as natural grade. Erosion control blanket not required.
- Erosion control blanket will be placed on compacted backfill and extended 5 feet beyond trench excavation daylight, all disturbed area, top of bank and toe of slope.
- For limits of compacted backfill and restrained joints, see table on Plan and Profile sheets.
- Adjust extents of erosion control blanket as directed by COR.
- Minimum cover depths shown on Table A are based on assumed channel elevation data at the time of analysis. Contractor to field verify actual cover depths and notify COR if actual cover depths vary by more than 10%.

DATE AND TIME PLOTTED: 11/09/15 10:03:40 AM
PLOTTED BY: JAC/CPH/BLW
CADD SYSTEM: CAD/PLANNER
11/09/15 10:03:40 AM



ALWAYS THINK SAFETY

U.S. DEPARTMENT OF THE INTERIOR
BUREAU OF RECLAMATION
NAVAJO-GILIP WATER SUPPLY PROJECT
NEW MEXICO

SAN JUAN LATERAL
BLOCK 9-11 - LINE PIPE

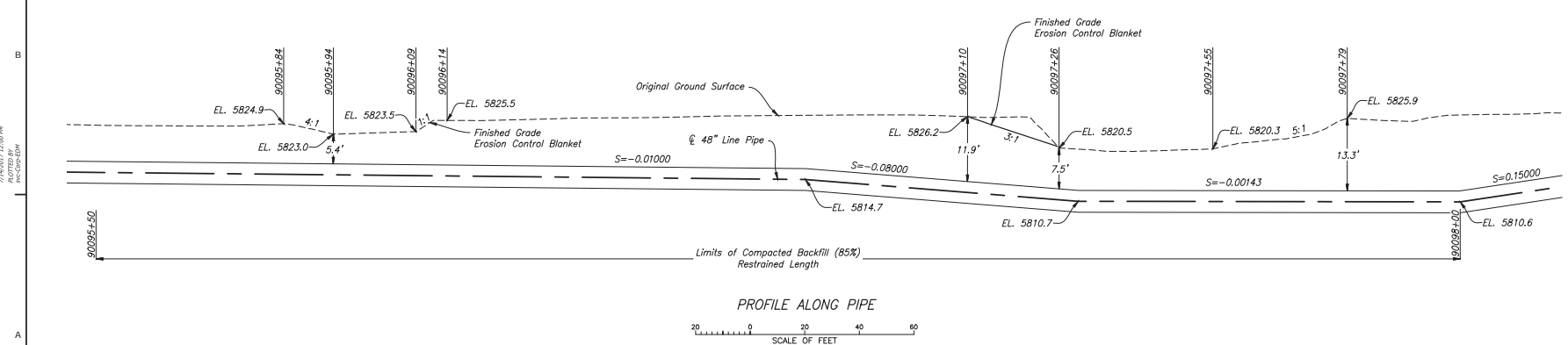
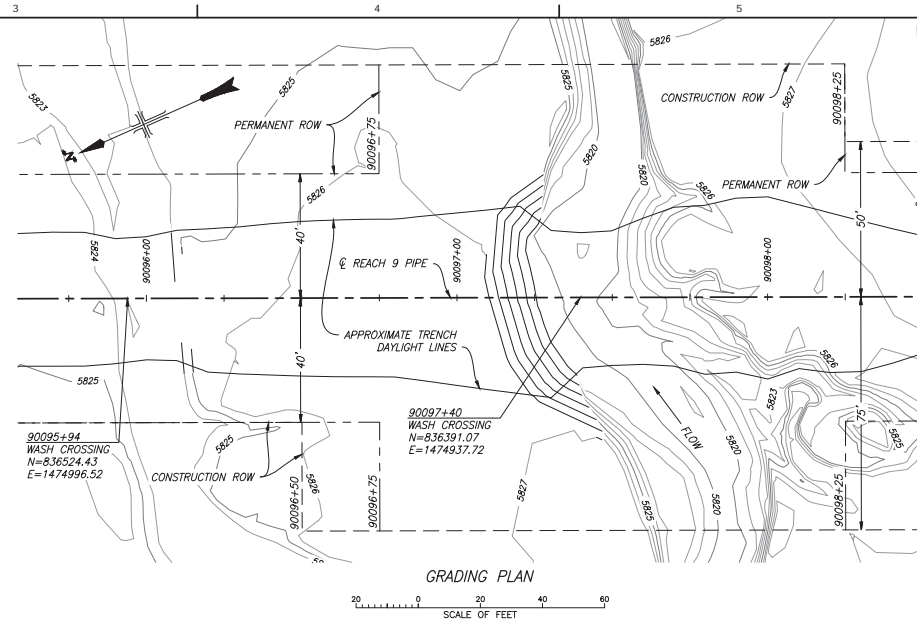
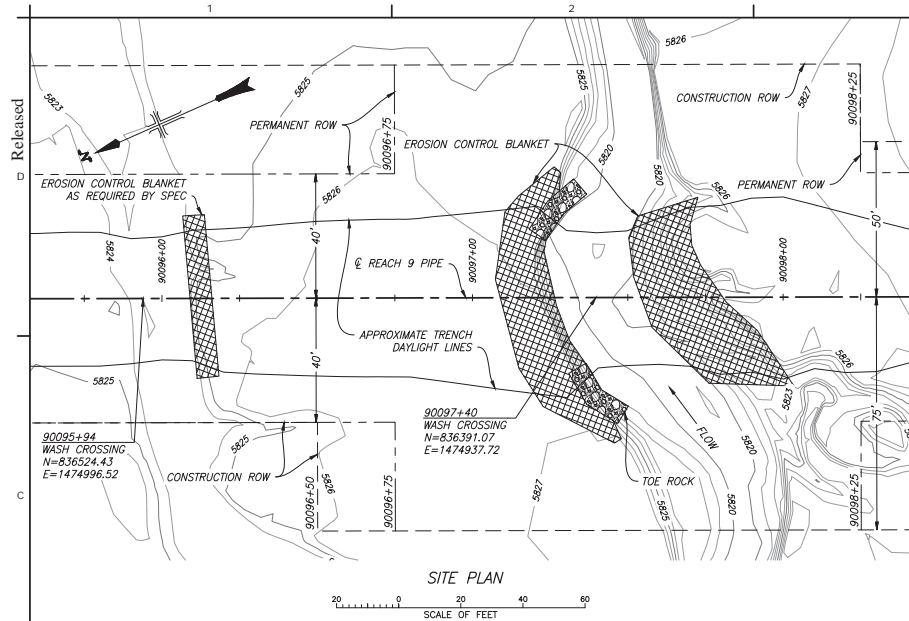
JOEL SHULTS
DESIGNED
SHANNON MONAHAN
DRAWN
ANDREW WARNER
CHECKED
Sisto, Michael P.E.
REV 4-PR
Bowles, Linda M. P.E.
APPROVED
11/09/15 10:03:40 AM
DENVER, CO 2017-03-30

WASH CROSSING

EROSION CONTROL
DETAILS

1695-D-60336

SHEET 1



NOTES

- For General Notes, Symbols, Abbreviations, and Pipe Classification, see (60281).
- For Plan and Profile, see (60283).
- Adjust extents of erosion control blanket as directed by COR.
- For typical wash crossing details, see (60335 & 60336).

ALWAYS THINK SAFETY

U.S. DEPARTMENT OF THE INTERIOR
BUREAU OF RECLAMATION
NAVAJO-GILAMP WATER SUPPLY PROJECT
NEW MEXICO

SAN JUAN LATERAL - REACH 9
LINE PIPE

JOEL SHOLTES
DESIGNED
SHANNON MONAHAN
DRAWN
ANDREW WARNER
CHECKED
Sisto, Michael P.E.
EST. APPR.
Bowles, Linda M. P.E.
APPROVED
10/16/2015 - Initial Approval

DENVER, CO

2017-03-30

WASH CROSSING

STA. 90095+94 AND
STA. 90097+40

1695-D-60339

SHEET 1