



STATE OF ARIZONA NAVAJO DIVISION OF TRANSPORTATION

BLACK MESA - N8065 NAVAJO COUNTY, ARIZONA

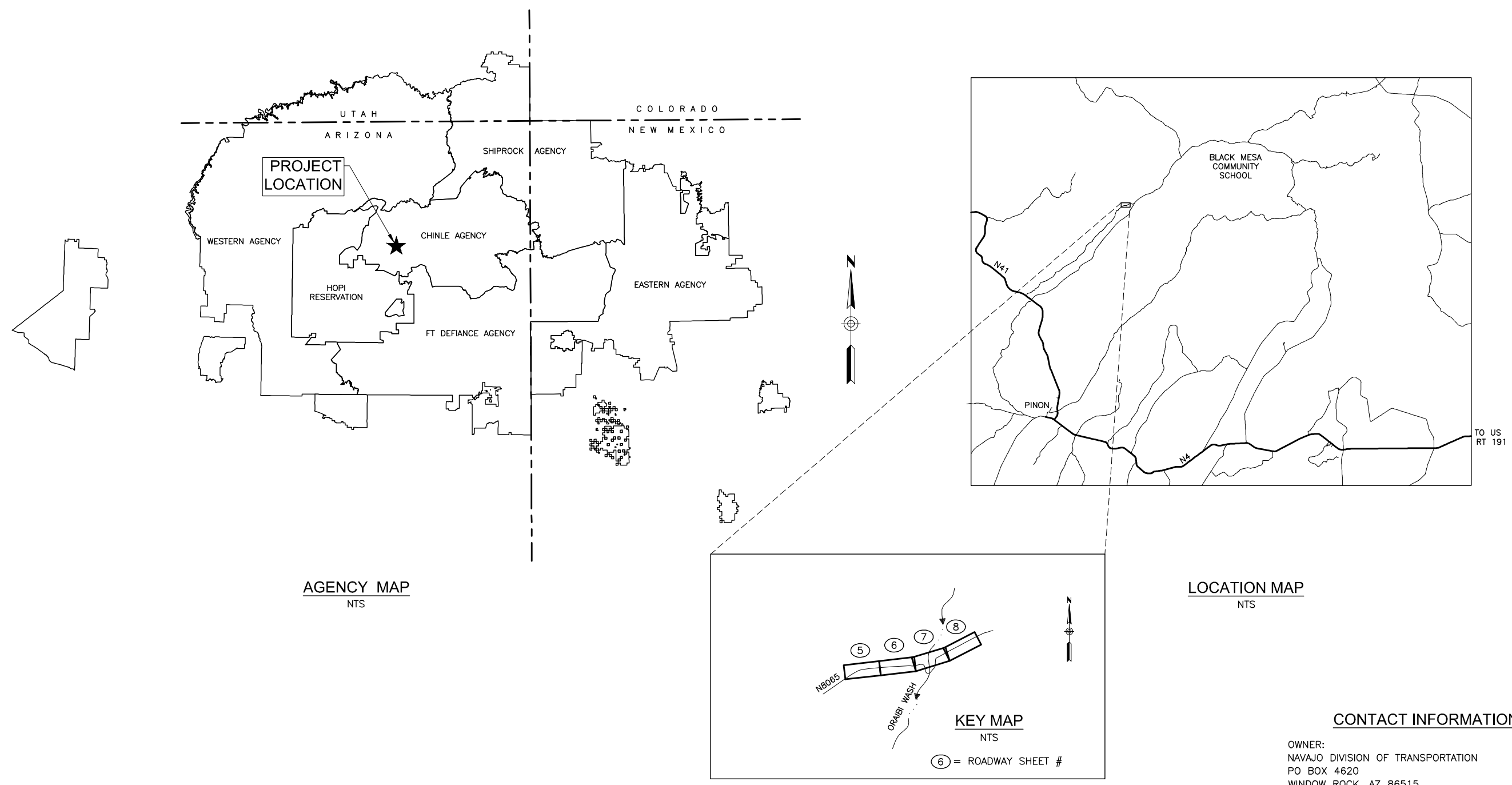
SHEET NO 1TOTAL SHEETS 10

**Dibble
Engineering**

DIBBLE PROJECT NO 101411.13

SHEET INDEX

SHEET	DRAWING	DESCRIPTION
1	G1	COVER SHEET
2	G2	STANDARD ABBREVIATIONS & LEGEND
3	G3	GENERAL NOTES
4	G4	SURVEY CONTROL
5	G5	TYPICAL SECTIONS & DETAILS
6	G6	DETAILS
7-10	PP1-PP4	PLAN & PROFILE



CONTACT INFORMATION

OWNER:
NAVAJO DIVISION OF TRANSPORTATION
PO BOX 4620
WINDOW ROCK, AZ 86515
P: (505) 371-8300
F: (505) 371-8399
www.navajodot.org

ENGINEER:
DIBBLE ENGINEERING
7500 N DREAMY DRAW DRIVE
SUITE 200
PHOENIX, AZ 85020
P: (602) 957-1155
F: (602) 957-2838
www.dibblecorp.com

BLACK MESA NDOT PROJECT NO CO1303

PROJECT TITLE: BLACK MESA - N8065 LOW WATER CROSSING PROJECT NUMBER: CO1303

\\2014\101411.13 NDOT ROAD FUND\N8065 BLACK MESA\CAD\1411-13-G2.DWG Sep. 7, 2017 3:45 PM

STANDARD ABBREVIATIONS & LEGEND

AASHTO	AMERICAN ASSOCIATION OF STATE HIGHWAY AND TRANSPORTATION OFFICIALS	MAG	MARICOPA ASSOCIATION OF GOVERNMENTS	UNK	UNKNOWN
ABAND	ABANDONED	MAX	MAXIMUM	UPRR	UNION PACIFIC RAILROAD
ABC	AGGREGATE BASE COURSE	MB	MAILBOX	V	VERTICAL
AC	ACRES	MCDOT	MARICOPA COUNTY DEPARTMENT OF TRANSPORTATION	VC	VERTICAL CURVE
AC	ASPHALT CONCRETE	MCESD	MARICOPA COUNTY ENVIRONMENTAL SERVICES DEPARTMENT	VCP	VITRIFIED CLAY PIPE
ACFC	ASPHALT CONCRETE FRICTION COURSE	ME	MATCH EXISTING	VG	VALLEY GUTTER
ACI	AMERICAN CONCRETE INSTITUTE	MH	MANHOLE	VNAE	VEHICULAR NON ACCESS EASEMENT
ACP	ASBESTOS CEMENT PIPE	MI	MILES		
ACSC	ASPHALT CONCRETE SURFACE COURSE	MIN	MINIMUM	W	WEST
ADA	AMERICANS WITH DISABILITIES ACT	MJ	MECHANICAL JOINT	W	WATER
ADOT	ARIZONA DEPARTMENT OF TRANSPORTATION	M	MONUMENT LINE	W/	WITH
AHD	AHEAD	MOD	MODIFIED	W/O	WITHOUT
AISC	AMERICAN INSTITUTE OF STEEL CONSTRUCTION	N	NORTH, NORTHING	WM	WATER METER
APS	ARIZONA PUBLIC SERVICE	NC	NORMAL CROWN	WSE	WATER SURFACE ELEVATION
ASLD	ARIZONA STATE LAND DEPARTMENT	NE	NORTHEAST	WV	WATER VALVE
ASTM	AMERICAN SOCIETY FOR TESTING MATERIALS	NO	NUMBER	XFMR	TRANSFORMER
AVE	AVENUE	NPDES	NATIONAL POLLUTANT DISCHARGE ELIMINATION SYSTEM		
		NPI	NON-PAY ITEM		
B/C	BACK OF CURB	NSF	NATIONAL SANITATION FOUNDATION		
BC	BRASS CAP	NTS	NOT TO SCALE		
BCF	BRASS CAP FLUSH	NW	NORTHWEST		
BCHH	BRASS CAP IN HANDHOLE				
BCR	BEGIN CURB RETURN	OC	ON CENTER		
BK	BACK	OD	OUTSIDE DIAMETER		
BKFL	BACKFILL	OHE	OVERHEAD ELECTRIC		
BLDG	BUILDING	OHT	OVERHEAD TELEPHONE		
BLVD	BOULEVARD				
BM	BENCHMARK	P	PAVEMENT ELEVATION		
BOT	BOTTOM	P	PHONE NUMBER		
		PB	PULLBOX		
C	CONCRETE ELEVATION	PC	POINT OF CURVATURE		
C	CONDUIT	PCC	POINT OF COMPOUND CURVATURE		
C&G	CURB AND GUTTER	PCCP	PORTLAND CEMENT CONCRETE PAVEMENT		
CAP	CORRUGATED ALUMINUM PIPE	PE	POLYETHYLENE PIPE		
CATV	CABLE TELEVISION	PD	TELEPHONE PEDESTAL		
CB	CATCH BASIN	PGL	PROFILE GRADE LINE		
CIP	CAST IRON PIPE	PH#	POT HOLE NUMBER		
CIP	CAST IN PLACE	PI	POINT OF INTERSECTION		
CIFP	CURED IN PLACE PIPE	PIP	PROTECT IN PLACE		
CK	CHECKED	P	PROPERTY LINE		
CL	CENTERLINE	PLSS	PUBLIC LAND SURVEY SYSTEM		
CLR	CLEAR	POC	POINT ON CURVE		
CMP	CORRUGATED METAL PIPE	POT	POINT ON TANGENT		
CO	CLEAN OUT	PP	POWER POLE		
COMM	COMMUNICATION	PRC	POINT OF REVERSE CURVATURE		
CONC	CONCRETE	PROP	PROPOSED		
CONST	CONSTRUCTION	PSI	POUNDS PER SQUARE INCH		
COR	CORNER	PT	POINT OF TANGENCY		
CORR	CORRECTION	PT	POINT		
CSP	CORRUGATED STEEL PIPE	PUE	PUBLIC UTILITY EASEMENT		
CTB	CEMENT TREATED BASE	PVC	POLY VINYL CHLORIDE		
		PVI	POINT OF VERTICAL INTERSECTION		
D/W	DRIVEWAY	PVMT	PAVEMENT		
DB	DUCT BANK	PVRC	POINT OF VERTICAL REVERSE CURVATURE		
DES	DESIGN	PVT	POINT OF VERTICAL TANGENCY		
DET	DETAIL				
DG	DECOMPOSED GRANITE	R	RADIUS		
DIP	DUCTILE IRON PIPE	R	RANGE		
DR	DRIVE	R/W	RIGHT-OF-WAY		
DRN	DRAWN	RCBC	REINFORCED CONCRETE BOX CULVERT		
DRNG	DRAINAGE	RCP	REINFORCED CONCRETE PIPE		
DWG	DRAWING	RD	ROAD		
		RDWY	ROADWAY		
E	EAST, EASTING	RELOC	RELOCATE		
E/R	EDGE OF ROAD	RGRCP	RUBBER GASKET REINFORCED CONCRETE PIPE		
E/P	EDGE OF PAVEMENT	RR	RAILROAD		
EA	EACH	RT	RIGHT		
EB	ELECTRIC PULLBOX				
ECR	END CURB RETURN	S	SLOPE		
EGL	ENERGY GRADE LINE	S	SOUTH		
EL	ELEVATION	S/W	SIDEWALK		
ELEC	ELECTRIC	SD	STORM DRAIN		
ESMT	EASEMENT	SE	SOUTHEAST		
EVAC	EAST VALLEY ASPHALT COMMITTEE	SEC	SECTION		
EXST	EXISTING	SF	SQUARE FOOT		
		SG	SUBGRADE ELEVATION		
F	FAX NUMBER	SHLDR	SHOULDER		
F/C	FACE OF CURB	SHT	SHEET		
FCDMC	FLOOD CONTROL DISTRICT OF MARICOPA COUNT	SPEC	SPECIFICATIONS		
FF	FINISH FLOOR ELEVATION	SRP	SALT RIVER PROJECT		
FG	FINISH GRADE ELEVATION	SS	SANITARY SEWER		
FH	FIRE HYDRANT	SSD	STOPPING SIGHT DISTANCE		
FHWA	FEDERAL HIGHWAY ADMINISTRATION	ST	STREET		
FL	FIRE LINE	STA	STATION		
FL	FLOWLINE	STD	STANDARD		
FL	FLANGE	STL	STEEL		
FND	FOUND	SW	SOUTHWEST		
FO	FIBER OPTIC	SWG	SOUTHWEST GAS COMPANY		
FT	FOOT OR FEET	SY	SQUARE YARD		
		T	TOWNSHIP		
G	GUTTER ELEVATION	T	TANGENT LENGTH		
G	GAS	T/W	TOP OF WALL		
GAF	GRID ADJUSTMENT FACTOR	TBM	TEMPORARY BENCHMARK		
GB	GRADE BREAK	TC	TOP OF CURB		
GM	GAS METER	TCE	TEMPORARY CONSTRUCTION EASEMENT		
GND	GROUND	TEL	TELEPHONE		
GV	GAS VALVE	TEMP	TEMPORARY		
		TN	TOP OF NUT		
H	HORIZONTAL	TOE	TOE OF EMBANKMENT		
HDPE	HIGH DENSITY POLYETHYLENE	TOP	TOP		
HDWL	HEADWALL	TRAN	TRANSITE PIPE		
HGL	HYDRAULIC GRADE LINE	TS	TRAFFIC SIGNAL		
HP	HIGH PRESSURE	TYP	TYPICAL		
HW	HIGH WATER				
HWY	HIGHWAY				
ID	INSIDE DIAMETER				
INV	INVERT				
IRR	IRRIGATION				
IV	IRRIGATION VALVE				
L	LENGTH OF CURVE				
LF	LINEAR FEET				
LS	LUMP SUM				
LT	LEFT				

EXISTING	NEW

EXISTING	NEW

AS BUILT DATE

24154
TIMOTHY M. WOLFE
Exp. 9/17/17
Arizona U.S.A.
Expires 12/31/19

DIBBLE PROJECT NO 101411.13

REVISION		BY		DATE	
		NAVAJO DIVISION OF TRANSPORTATION			
PROJECT NO C01303					
BLACK MESA					
STANDARD ABBREVIATIONS & LEGEND					
DRN: DB	DES: JRH	CK: TMW	DRAWING	SHEET	
DATE:9/17	DATE:9/17	DATE:9/17			
SCALE: N/A	HORIZONTAL		G2	2 OF 10	
	VERTICAL				

GENERAL NOTES

1. THIS PROJECT HAS BEEN DESIGNED USING:
ADOT CONSTRUCTION STANDARD DRAWINGS (2012)
ADOT EROSION/SEDIMENT CONTROL & WATER QUALITY PROTECTION DETAILS (CURRENT EDITION)
STANDARD SPECIFICATIONS FOR CONSTRUCTION OF ROADS & BRIDGES ON FEDERAL HIGHWAY PROJECTS (FP-14 US CUSTOMARY UNITS) SHALL PREVAIL W/MODIFICATION IN THE SPECIAL CONTRACT REQUIREMENTS.
2. EXISTING UTILITIES DEPICTED ON THE PLANS ARE SHOWN AT THEIR APPROXIMATE LOCATION & ARE DERIVED FROM THE BEST INFORMATION AVAILABLE. THERE MAY BE UNKNOWN UTILITIES LOCATED W/IN THE PROJECT CORRIDOR WHERE NO INFORMATION EXISTS. THE CONTRACTOR IS RESPONSIBLE FOR VERIFYING THE LOCATIONS OF ALL EXISTING UTILITIES BY WHATEVER MEANS DEEMED NECESSARY IN ORDER TO COMPLETE THE WORK & AVOID ALL DAMAGE TO THE EXISTING UTILITIES. UTILITY OWNERS SHALL BE CONTACTED & ALL UTILITY LINES SHALL BE MARKED/STAKED PRIOR TO COMMENCEMENT OF CONSTRUCTION. WHERE DUE TO CONTRACTOR NEGLIGENCE, THE CONTRACTOR SHALL BE RESPONSIBLE FOR ALL DAMAGE TO EXISTING UTILITIES & THE REPAIR/RESTORATION THEREOF AT NO ADDITIONAL COST TO NDOT.
3. NTUA NATURAL GAS DEPARTMENT SHALL BE CONTACTED AT (928)729-6275 REGARDING SCHEDULING, ENGINEERING, CONSTRUCTION, & PROJECT MANAGEMENT A MINIMUM OF 72 HOURS BEFORE COMMENCEMENT OF CONSTRUCTION. CONTRACTOR SHALL POTHOLE THE EXISTING GAS LINE PRIOR TO COMMENCEMENT OF ANY WORK AROUND THE NTUA NATURAL GAS FACILITIES. CONTRACTOR SHALL LOCATE NTUA NATURAL GAS FACILITY, CALL 811 & NTUA DISTRICT OFFICE A MINIMUM OF 72 HOURS BEFORE DIGGING. DIGGING IN VICINITY OF NTUA NATURAL GAS FACILITIES SHALL BE MONITORED BY NTUA.
4. THE CONTRACTOR IS RESPONSIBLE FOR ANY DAMAGE TO THE EXISTING PAVEMENT & SHALL REPAIR OR REPLACE ANY DAMAGED PAVEMENT TO EQUAL OR BETTER CONDITION AT NO ADDITIONAL COST TO NDOT.
5. THE CONTRACTOR IS RESPONSIBLE FOR ALL CONSTRUCTION SURVEY & STAKING.
6. QUANTITIES SHOWN ARE APPROXIMATE. CONTRACTOR SHALL VERIFY ALL QUANTITIES.

AS BUILT DATE

Dibble Engineering

DIBBLE PROJECT NO 101411.13

Professional Engineer


24154

TIMOTHY M. WOLFE

Exp. 09/17/17

Arizona U.S.A.

Expires 12/31/19

△	REVISION		BY	DATE
<div><div><div>NAVAJO D.O.T.</div></div><div>NAVAJO DIVISION OF TRANSPORTATION</div></div>				
PROJECT NO C01303				
BLACK MESA				
GENERAL NOTES				
DRN: DB	DES: JRH	CK: TMW	DRAWING	SHEET
DATE:9/17	DATE:9/17	DATE:9/17		
SCALE:	N/A N/A	HORIZONTAL VERTICAL	G3	3 OF 10

NOTES

1. COORDINATES WERE PROVIDED TO DIBBLE ENGINEERING BY NDOT AND HAVE NOT BEEN FIELD VERIFIED BY DIBBLE ENGINEERING
2. SURVEYED DURING THE MONTH OF FEB 2012
3. CONTRACTOR SHALL VERIFY HORIZONTAL & VERTICAL CONTROLS IN THE FIELD PRIOR TO CONSTRUCTION.
4. PROJECT METADATA

UNITS:
COORDINATES, DISTANCES & ELEVATIONS ARE SHOWN IN INTERNATIONAL FEET.

HORIZONTAL DATUM:
NNCS=NAVAJO NATION COORDINATE SYSTEM (ORIGINATED FROM NAD '83)

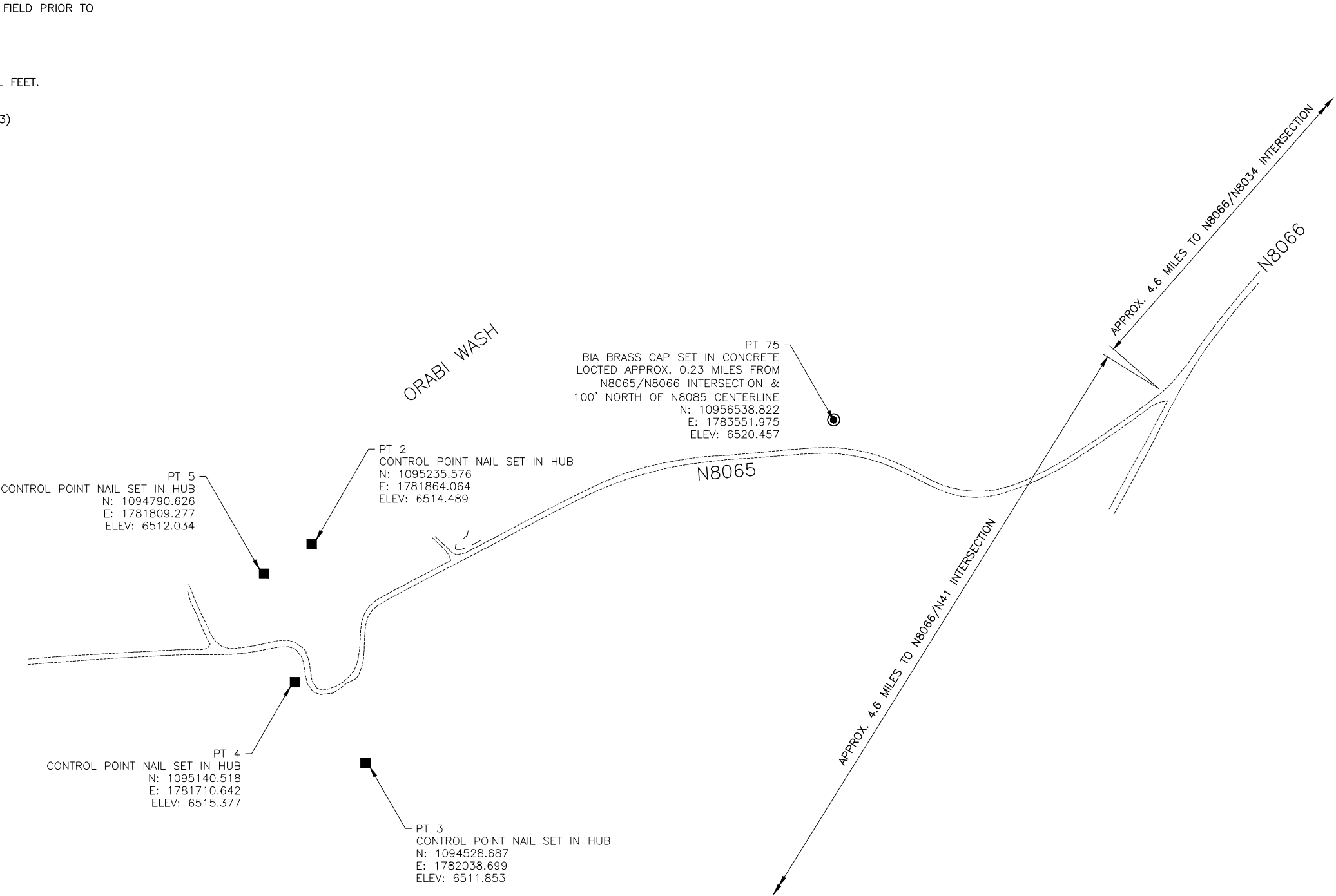
PROJECTION DATA:
LATITUDE OF GRID ORIGIN & STANDARD PARALLEL: 36° 00' 00" N
LONGITUDE OF CENTRAL MERIDIAN: 109° 30' 00" W
FALSE NORTHING (AT GRID ORIGIN): 984251.969 IFT
FALSE EASTING (ON CENTRAL MERIDIAN): 1968503.997 IFT
SCALE FACTOR ON STANDARD PARALLEL: 1.00023 (EXACT)

VERTICAL DATUM:
NAVD '88

PROJECT BENCHMARK:
POINT NUMBER = 75
NORTHING = 1095638.822
EASTING = 1783551.975
ELEVATION = 6520.457
BIA BRASS CAP SET IN CONCRETE

SECONDARY BENCH:
POINT NUMBER = 2
NORTHING = 1095235.576
EASTING = 1781864.064
ELEVATION = 6514.489
CONTROL POINT, NAIL IN HUB

5. THIS IS NOT A PROPERTY BOUNDARY SURVEY.



AS BUILT DATE

Dibble

Engineering

24154

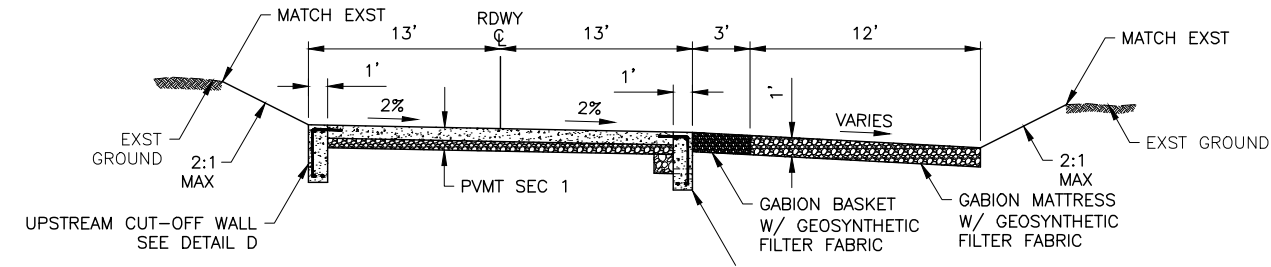
TIMOTHY M. WOLFE

Arizona, U.S.A.

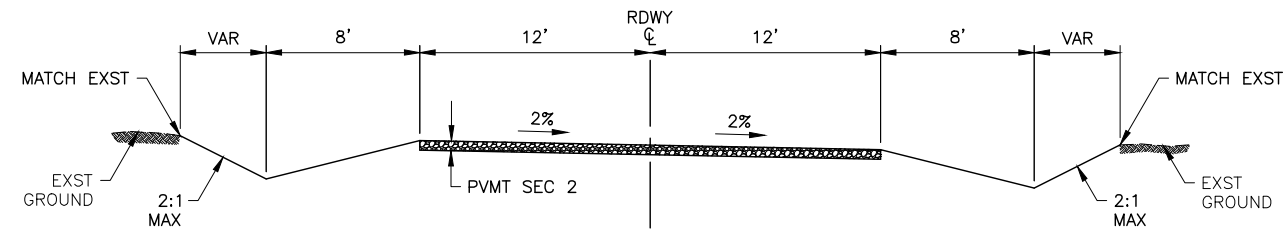
Expires 12/31/19

DIBBLE PROJECT NO 101411.13

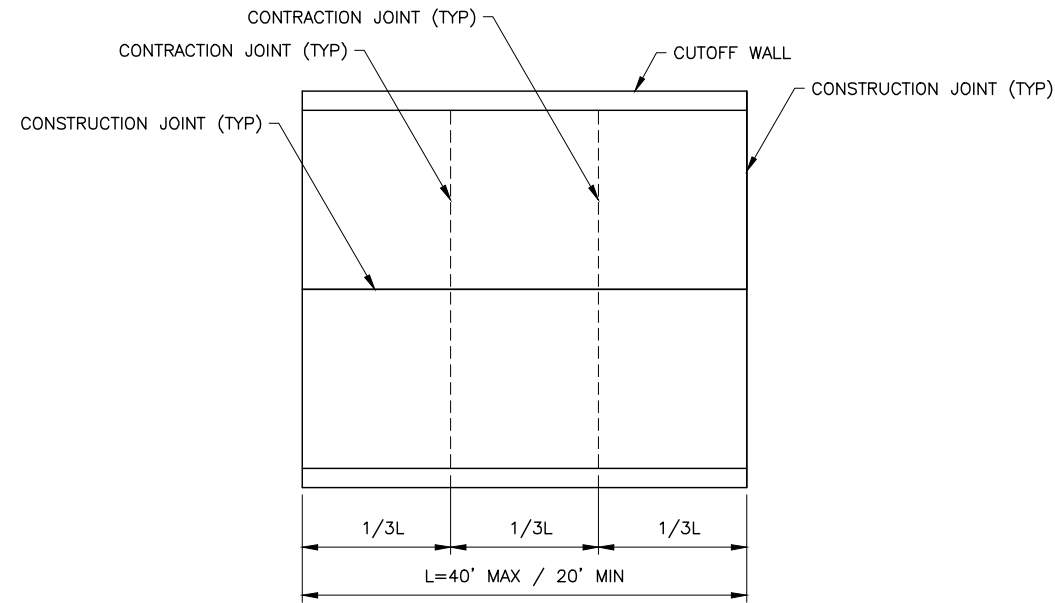
REVISION			BY	DATE
<div><div><div><div></div><div>NAVAJO D.O.T.</div></div></div></div>			NAVAJO DIVISION OF TRANSPORTATION	
PROJECT NO C01303				
BLACK MESA				
SURVEY CONTROL				
DRN: DB	DES: JRH	CK: TMW	DRAWING	SHEET
DATE:9/17	DATE:9/17	DATE:9/17		
SCALE: 1"=200' N/A			HORIZONTAL VERTICAL	G4 4 OF 10



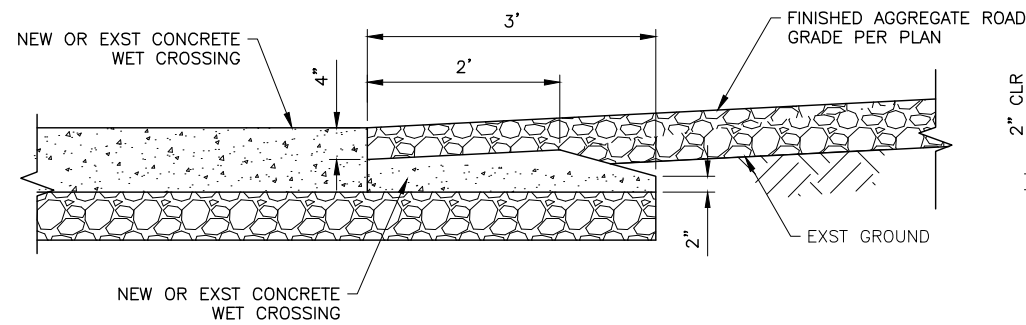
A WET CONCRETE CROSSING TYPICAL SECTION
NO SCALE
STA 17+19 TO STA 21+00



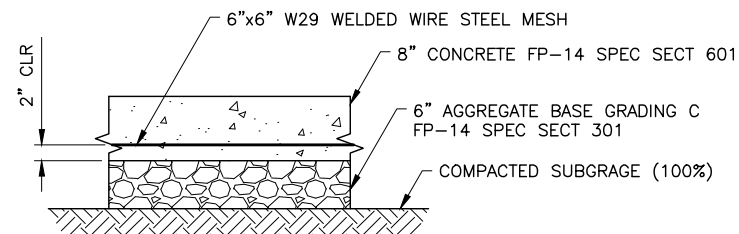
B STABILIZED AGGREGATE TYPICAL SECTION
NO SCALE
STABILIZED ABC TYPICAL
STA 12+00 TO STA 17+19
STA 21+00 TO STA 26+50



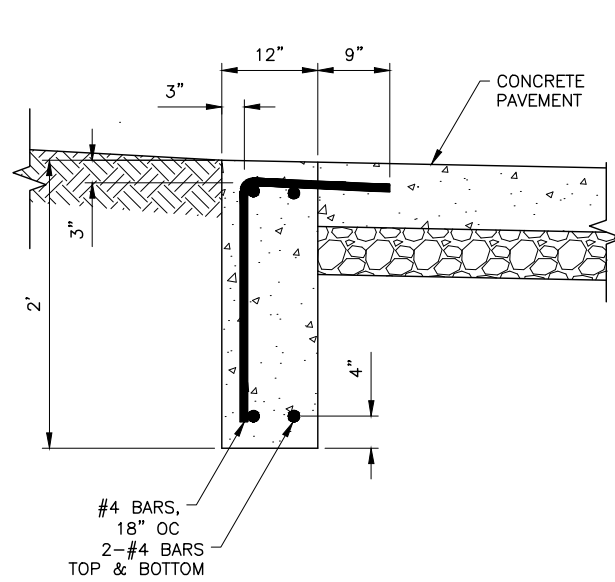
C JOINT LOCATIONS
NO SCALE



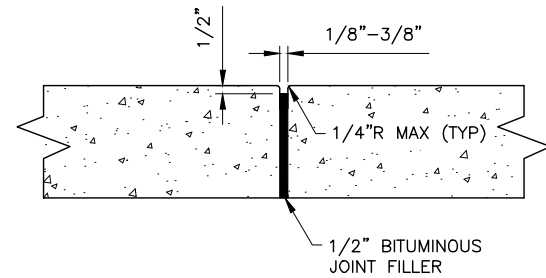
D TRANSITION AT WET CROSSINGS
NO SCALE



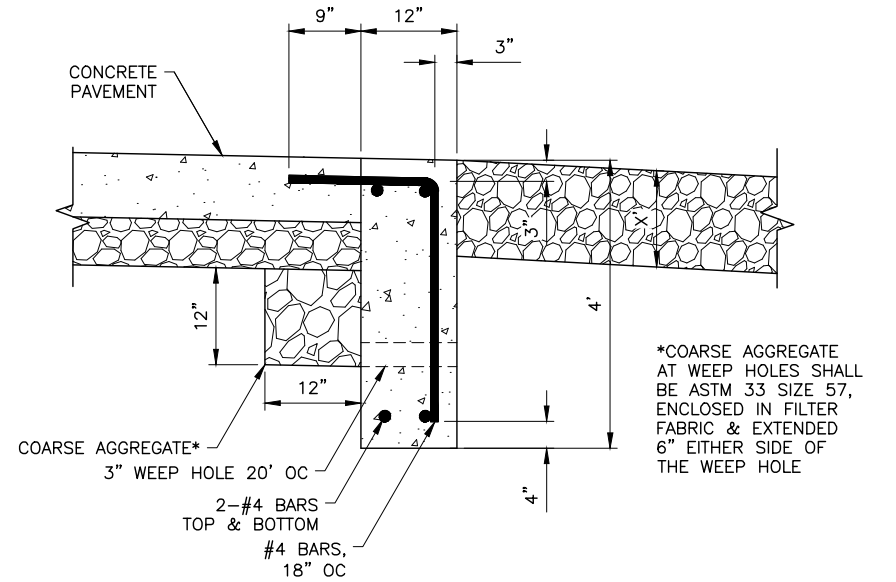
E PAVEMENT SECTION 1
TOTAL DEPTH = 14"



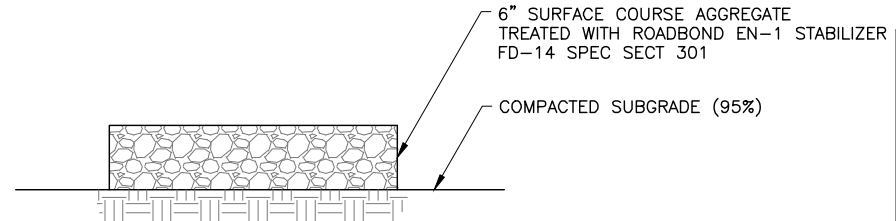
F UPSTREAM CUT-OFF WALL
NO SCALE




G CONCRETE JOINTS
NO SCALE



H DOWNSTREAM CUT-OFF WALL
NO SCALE



I PAVEMENT SECTION 2
TOTAL DEPTH = 6"

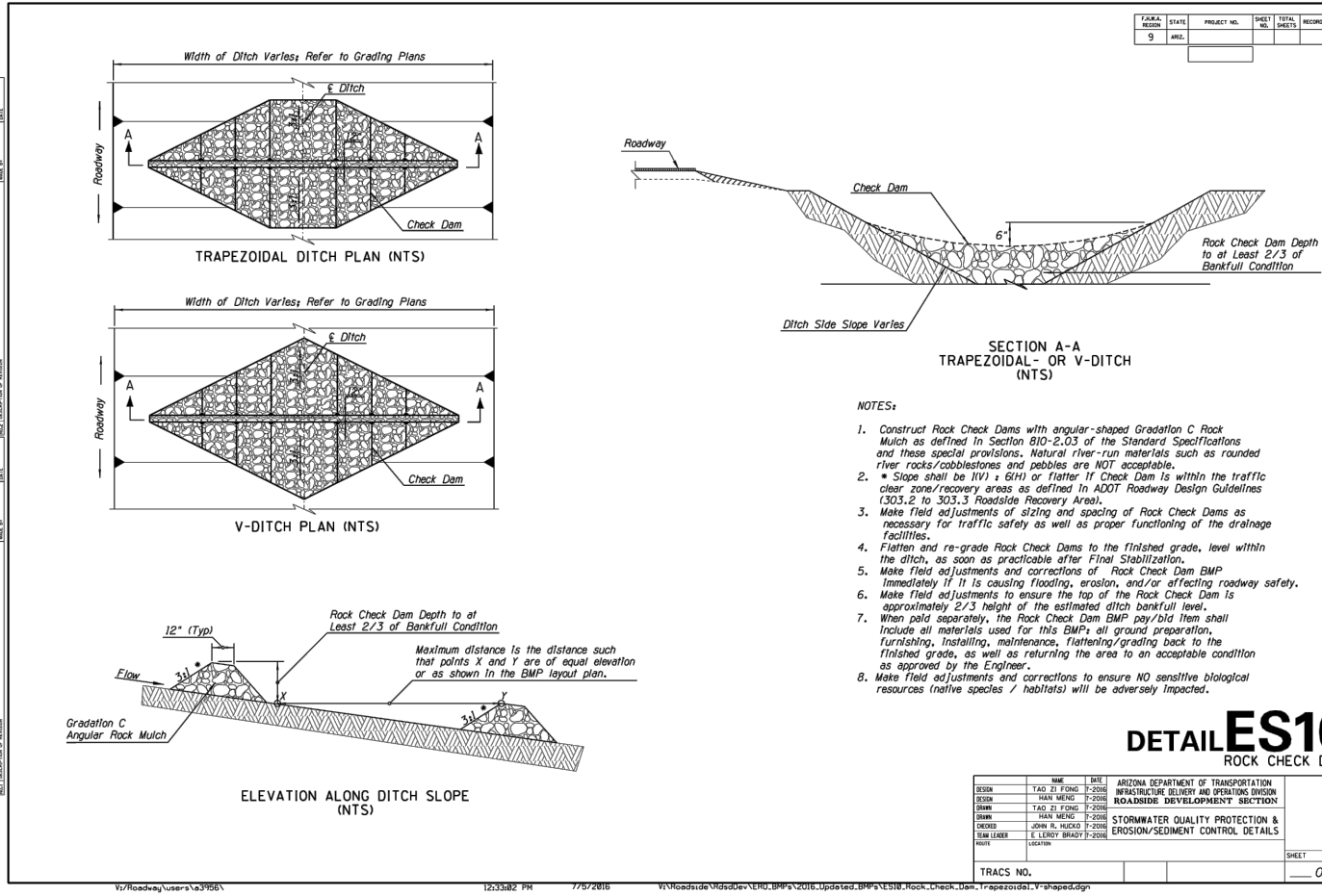
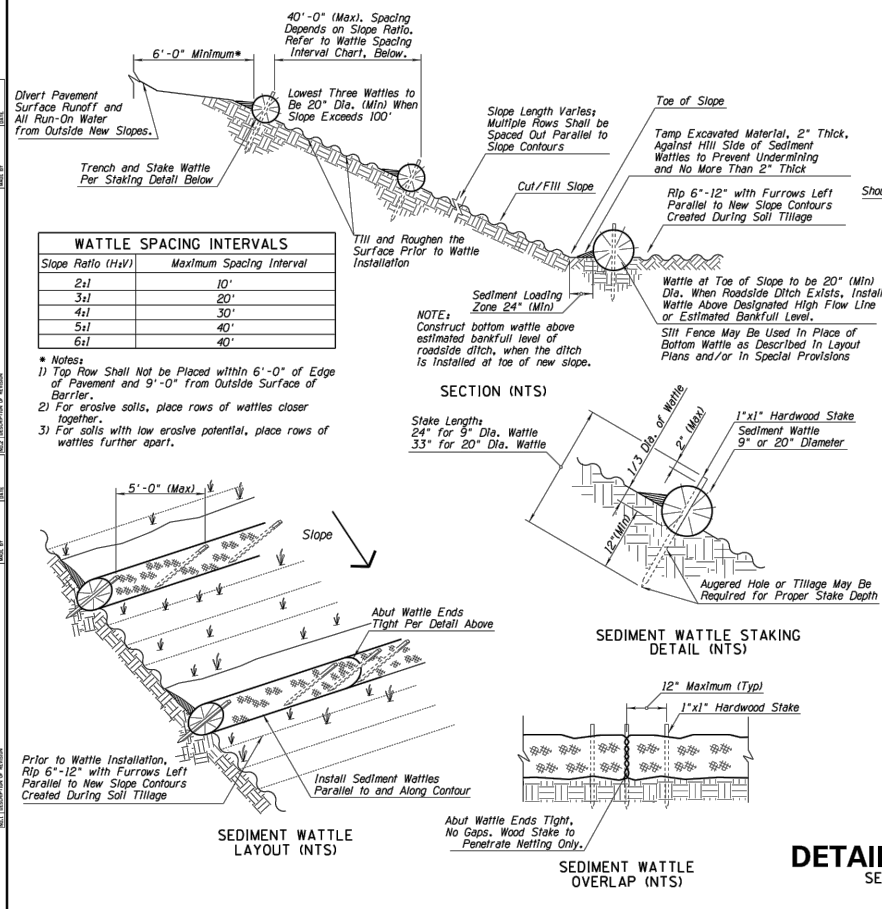
△	REVISION		BY	DATE
<div></div> <div>NAVAJO D.Q.T.</div>				
NAVAJO DIVISION OF TRANSPORTATION				
PROJECT NO C01303				
BLACK MESA				
TYPICAL SECTIONS & DETAILS				
DRN: DB	DES: JRH	CK: TMW	DRAWING	SHEET
DATE:9/17	DATE:9/17	DATE:9/17		
SCALE: N/A N/A	HORIZONTAL VERTICAL		G5	5 OF 10



1. Install Sediment Wattles as slopes are constructed to grade or as directed by the Engineer. Select, install and maintain in conformance with manufacturers' specifications to meet site conditions and slope specific erosion control needs. Erosion prevention on slopes. No Sediment Wattles shall be installed in urban freeway medians, nor where cable barrier systems are employed.
2. Sediment Wattles shall be installed in contact with trench bottom and sides. Do not overlap wattle ends on top of each other. A 20" Dia. wattle may be made from 2'-3' rolled excelsior or straw blankets. Back adjusting wattle length to allow for drainage. Do the first and last wattle be a second wattle a single wattle. The first wattle will help both them tightly.
3. Repair any rills or gullies promptly. Make field adjustments and replace BMP immediately if it is causing flooding, erosion, and/or affecting roadway safety.
4. Construction of cut slopes 2:1 and steeper in soil and rock material that can be eroded by slope erosion. Erosion prevention on slopes. Minberching. Refer to Slope Minberching BMP detail.
5. Loosening surface soil is not required where Minberches are used. Minberches shall be installed in a staggered fashion, with ridges and furrows parallel to new slope contours and as specified in Section 805 of the Standard Specifications and these special provisions.
6. Sediment Wattles shall be installed in contact with trench bottom and sides. Do not overlap wattle ends on top of each other. A 20" Dia. wattle may be made from 2'-3' rolled excelsior or straw blankets. Back adjusting wattle length to allow for drainage. Do the first and last wattle be a second wattle a single wattle. The first wattle will help both them tightly.
7. Installation and maintenance of Sediment Wattle BMPs shall not negatively impact traffic safety, nor the designed function of roadway drainage.
8. Install and maintain Sediment Wattle BMPs to carry the stormwater of at least 2-year, 24-hour events.
9. The Sediment Wattle BMPs shall be a prebid item shall include all materials and labor for this BMPs all ground preparation, furnishing, installing, maintenance, final removal, and disposal of this temporary BMP, as well as returning the area to an acceptable condition as approved by the Engineer.
10. Refer to Standard Specification Section 810-2.6(C)(i) for Sediment Wattle material specifications.
11. Use of any chemical or biological corrections to ensure NO sensitive biological resources (native species / habitats) will be adversely impacted.

NAME		DATE		ARIZONA DEPARTMENT OF TRANSPORTATION INFRASTRUCTURE DELIVERY AND OPERATIONS DIVISION ROADSIDE DEVELOPMENT SECTION	
DESIGN	TAO ZI FONG	7-2016		STORMWATER QUALITY PROTECTION & EROSION/SEDIMENT CONTROL DETAILS	
DESIGN	HAN MENG	7-2016			
DRAWN	TAO ZI FONG	7-2016			
DRAWN	HAN MENG	7-2016			
CHECKED	JOHN B. HUCKO	7-2016			
TEAM LEADER	E. LEROY BRADY	7-2016			
ROUTE	UP	LOCATION			
TRACS NO.				SHEET OF	
				OF	

DETAIL ES3
SEDIMENT WATTLE



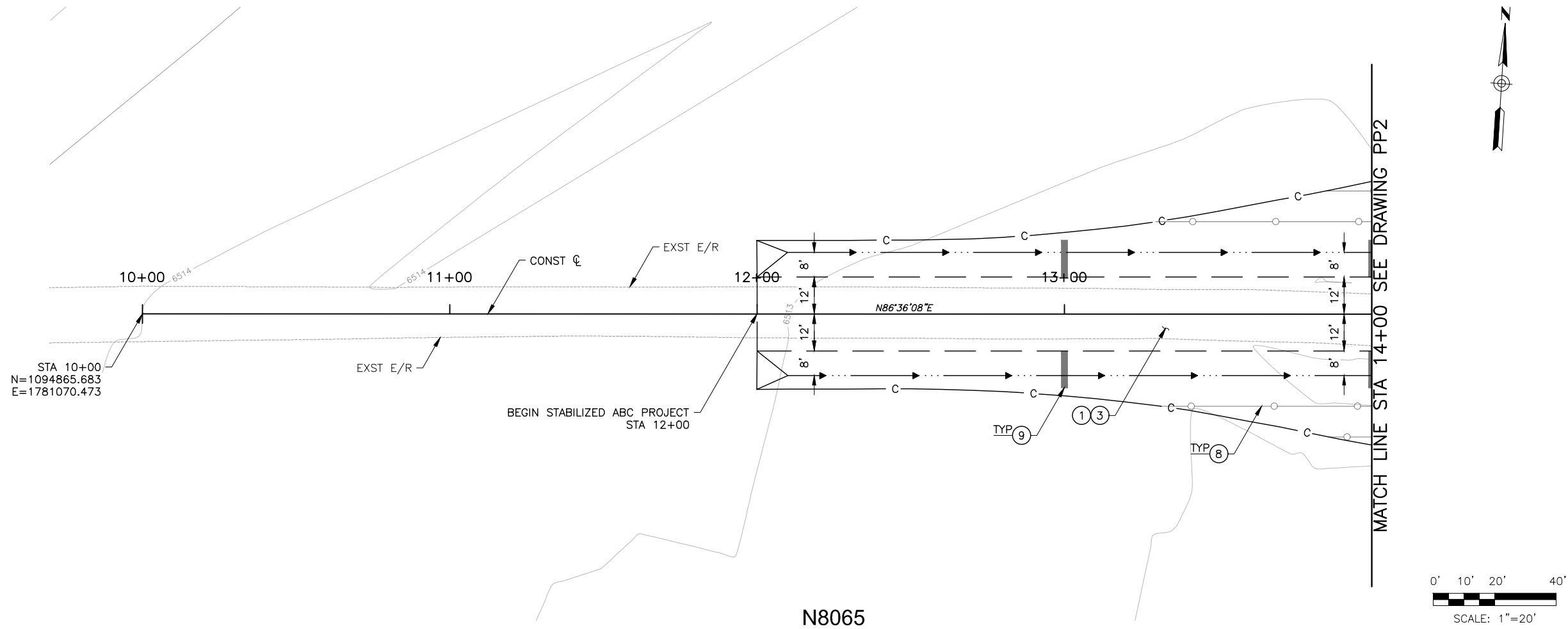
DETAIL ES10

NAME		DATE		ARIZONA DEPARTMENT OF TRANSPORTATION INFRASTRUCTURE DELIVERY AND OPERATIONS DIVISION ROADSIDE DEVELOPMENT SECTION STORMWATER QUALITY PROTECTION & EROSION/SEDMIMENT CONTROL DETAILS
DESIGN	TAO ZI FONG	7-20-06		
DESIGN	HAN MENG	7-20-06		
DRAWN	TAO ZI FONG	7-20-06		
DRAWN	HAN MENG	7-20-06		
CHECKED	JOHN R. HUCKO	7-20-06		
TEAM LEADER	E. LEROY BRADY	7-20-06		
ROUTE	LOCATION			
TRACS NO.				SHEET _____ OF _____ _____ OF _____

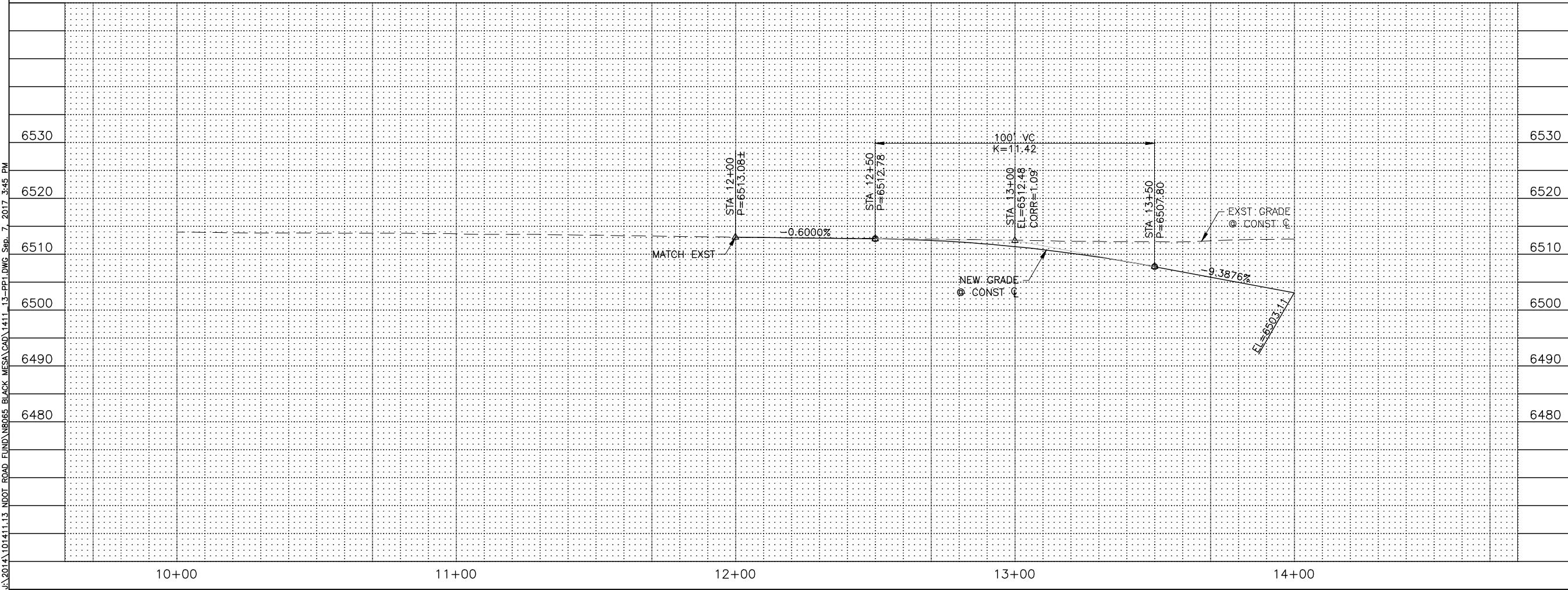
DETAILS


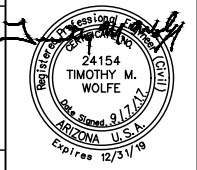

DRN: DB	DES: JRH	CK: TMW	DRAWING	SHEET
DATE:9/17	DATE:9/17	DATE:9/17		
SCALE: N/A N/A	HORIZONTAL VERTICAL		G6	6 OF 10

J:\2014\101411.13 NDOT ROAD FUND\N8065 BLACK MESA\CAD\1411_13-PP1.DWG Sep. 7, 2017 3:45 PM

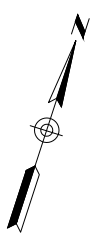
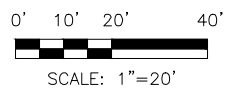
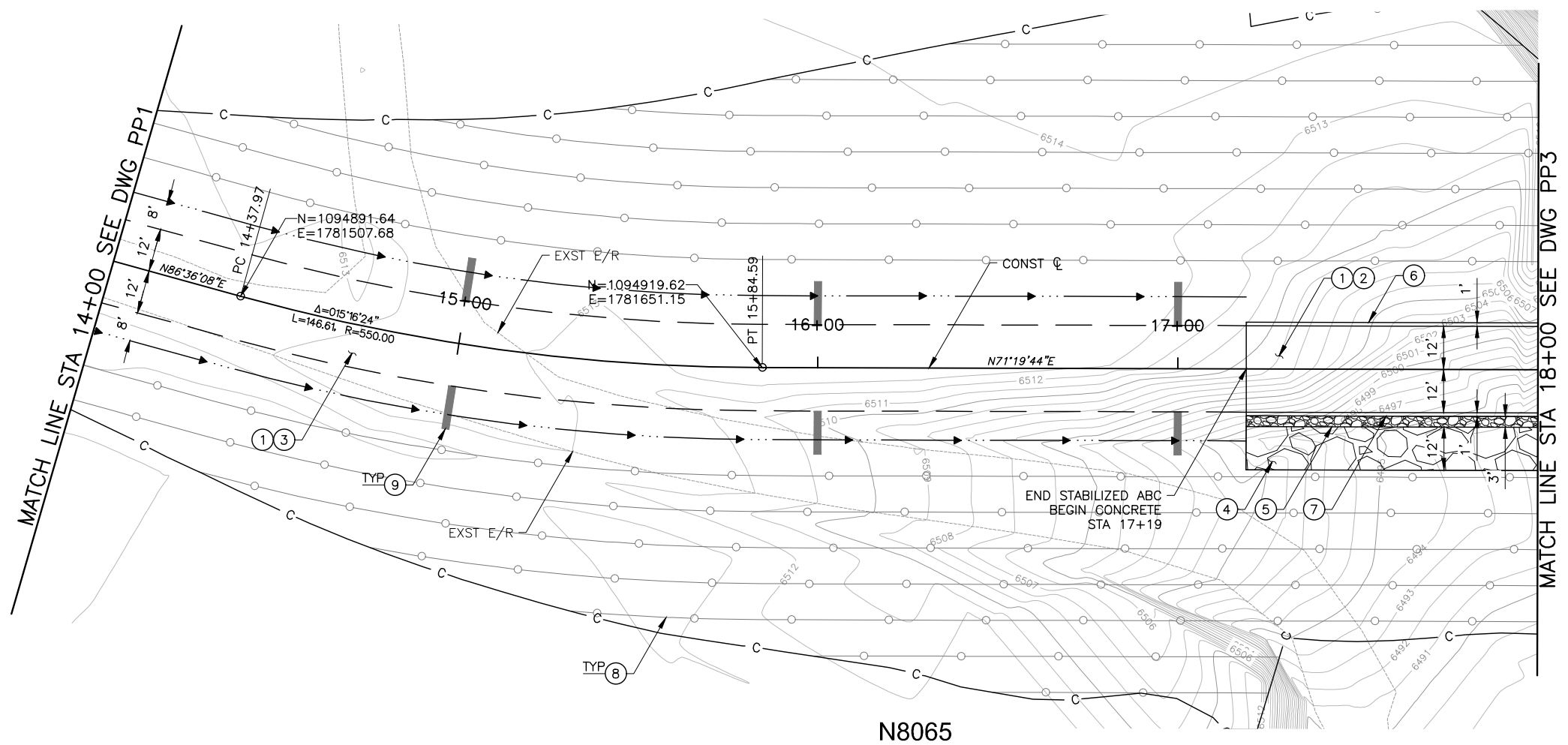


N8065



AS BUILT DATE					
DIBBLE PROJECT NO 101411.13					
CONSTRUCTION NOTES					
1	SUBGRADE PREPARATION	533	SY		
3	6" STABILIZED ABC PVMT SEC 2, DWG G5	150	TON		
8	SEDIMENT WATTLE ADOT STD DET ES3, DWG G6 10' SPACING	169	LF		
9	ROCK CHECK DAM ADOT STD DET ES10, DWG G6 PLACED @ 100' INTERVALS ALONG THE CENTERLINE	4	EA		
REVISION					
BY					
DATE					
 NAVAJO DIVISION OF TRANSPORTATION					
PROJECT NO C01303					
BLACK MESA					
PLAN & PROFILE STA 10+00 TO STA 14+00					
DRN: DB	DES: JRH	CK: TMW	DRAWING	SHEET	
DATE: 9/17	DATE: 9/17	DATE: 9/17	PP1	7 OF 10	
SCALE: 1"=20' 1"=10'			HORIZONTAL VERTICAL		

N:\2014\101411.13 NDOT ROAD FUND\N8065 BLACK MESA\CAD\1411_13-PP2.DWG Sep. 7, 2017 3:46 PM

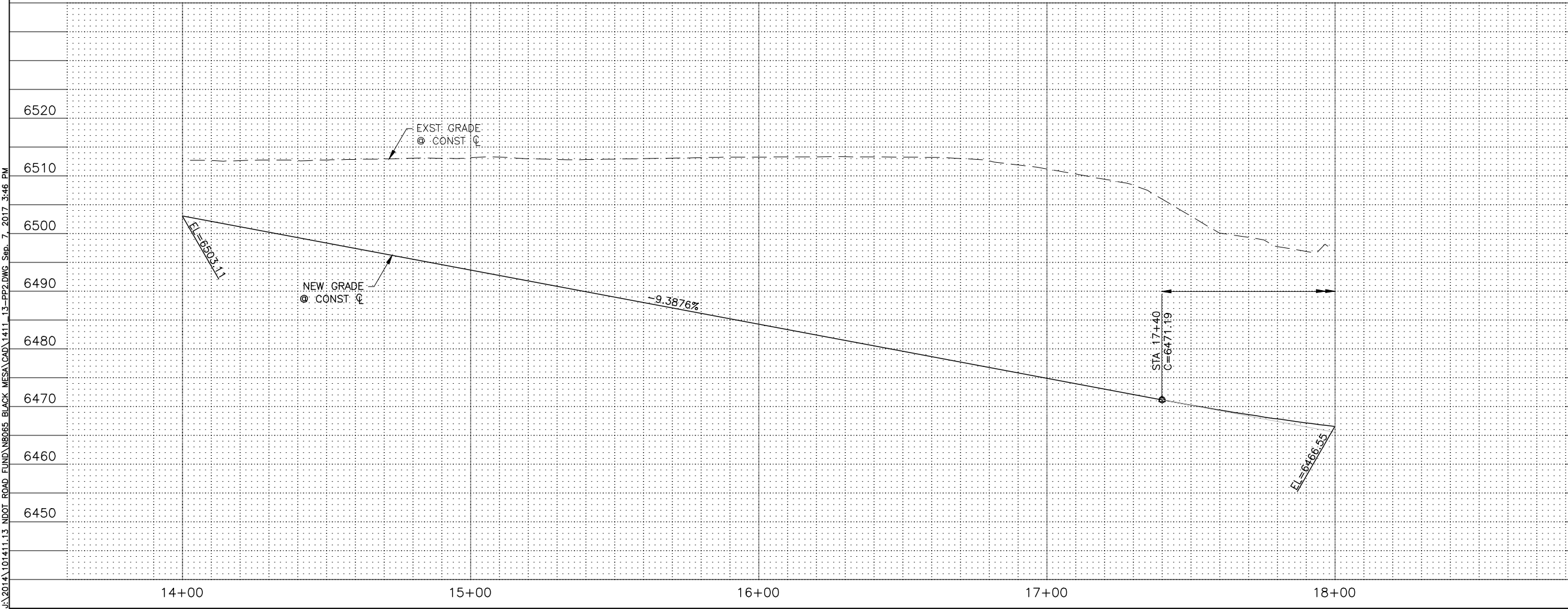


AS BUILT DATE

Dibble Engineering

DIBBLE PROJECT NO 101411.13

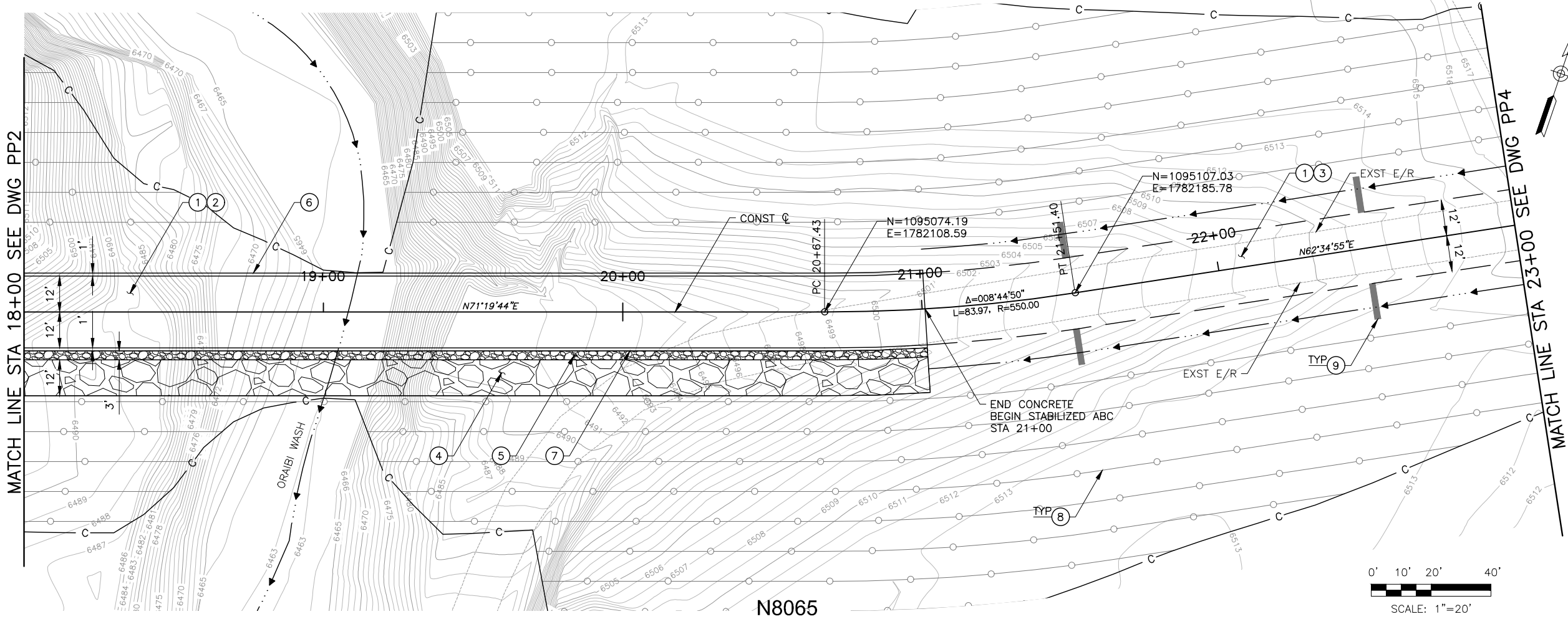
CONSTRUCTION NOTES		
①	SUBGRADE PREPARATION	1,067 SY
②	8" PCCP ON 6" ABC PVMT SEC 1, DWG G5	216 SY
③	6" STABILIZED ABC PVMT SEC 2, DWG G5	280 TON
④	GABION MATTRESS	108 SY
⑤	GABION BASKET	27 CY
⑥	CUTOFF WALL DET D, DWG G5	324 SF
⑦	CUTOFF WALL DET E, DWG G5	324 SF
⑧	SEDIMENT WATTLE ADOT STD DET ES3, DWG G6 10' SPACING	4,147 LF
⑨	ROCK CHECK DAM ADOT STD DET ES10, DWG G6 PLACED @ 100' INTERVALS ALONG THE CENTERLINE	6 EA



6520	6520
6510	6510
6500	6500
6490	6490
6480	6480
6470	6470
6460	6460
6450	6450

Δ	REVISION	BY	DATE
	NAVAJO DIVISION OF TRANSPORTATION		
PROJECT NO C01303			
BLACK MESA			
PLAN & PROFILE STA 14+00 TO STA 18+00			
DRN: DB	DES: JRH	CK: TMW	DRAWING
DATE: 9/17	DATE: 9/17	DATE: 9/17	SHEET
SCALE: 1"=20' 1"=10'		HORIZONTAL VERTICAL	
PP2		8 OF 10	

N:\2014\101411.13 NDOT ROAD FUND\N8065 BLACK MESA\CAD\1411_13-PP3.DWG Sep. 7, 2017 3:46 PM

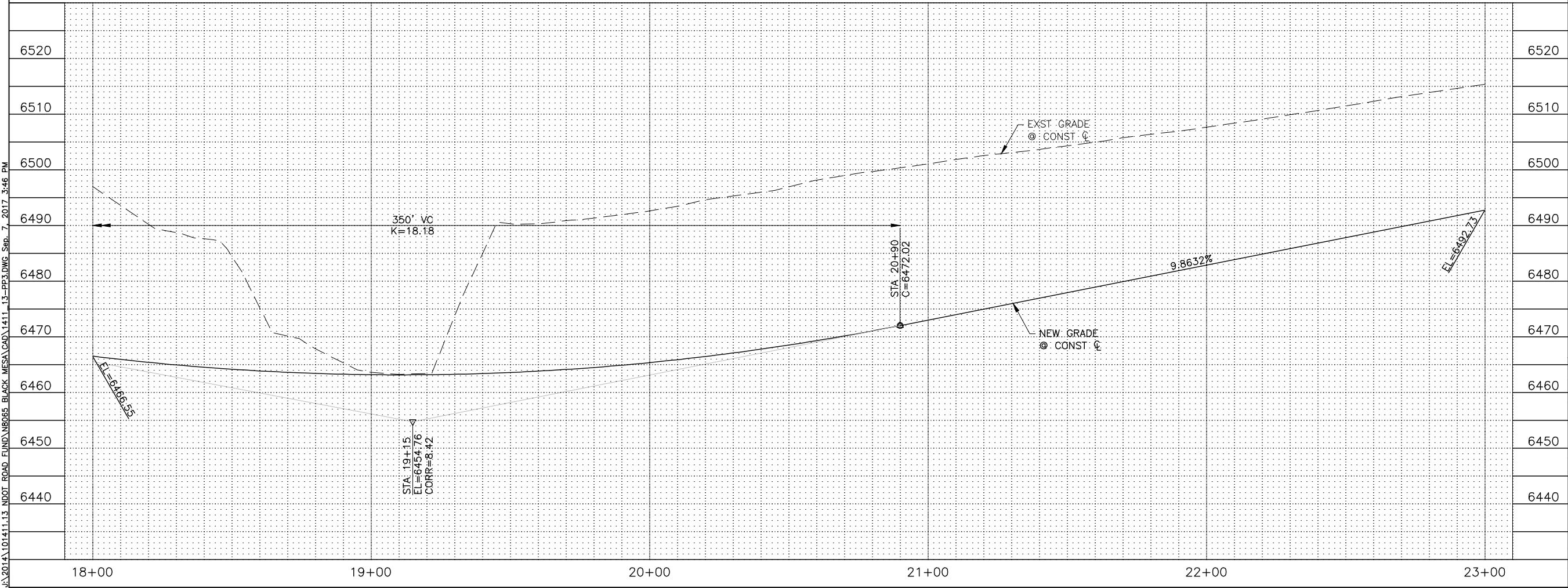


AS BUILT DATE

Dibble
Engineering

DIBBLE PROJECT NO 101411.13

CONSTRUCTION NOTES		
①	SUBGRADE PREPARATION	1,334 SY
②	8" PCCP ON 6" ABC PVMT SEC 1, DWG G5	803 SY
③	6" STABILIZED ABC PVMT SEC 2, DWG G5	300 TON
④	GABION MATTRESS	403 SY
⑤	GABION BASKET	101 CY
⑥	CUTOFF WALL DET D, DWG G5	1204 SF
⑦	CUTOFF WALL DET E, DWG G5	1204 SF
⑧	SEDIMENT WATTLE ADOT STD DET ES3, DWG G6 10' SPACING	5,772 LF
⑨	ROCK CHECK DAM ADOT STD DET ES10, DWG G6 PLACED @ 100' INTERVALS ALONG THE CENTERLINE	4 EA



REVISION		BY	DATE
NAVAJO DIVISION OF TRANSPORTATION			
PROJECT NO C01303			
BLACK MESA			
PLAN & PROFILE STA 18+00 TO STA 23+00			
DRN: DB	DES: JRH	CK: TMW	DRAWING
DATE: 9/17	DATE: 9/17	DATE: 9/17	SHEET
SCALE: 1"=20' 1"=10'		HORIZONTAL VERTICAL	
PP3		9 OF 10	

