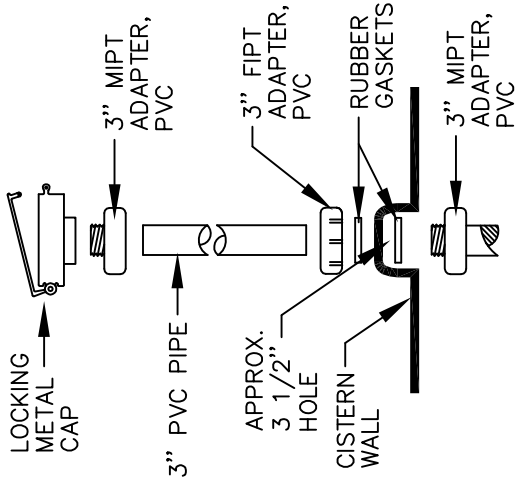
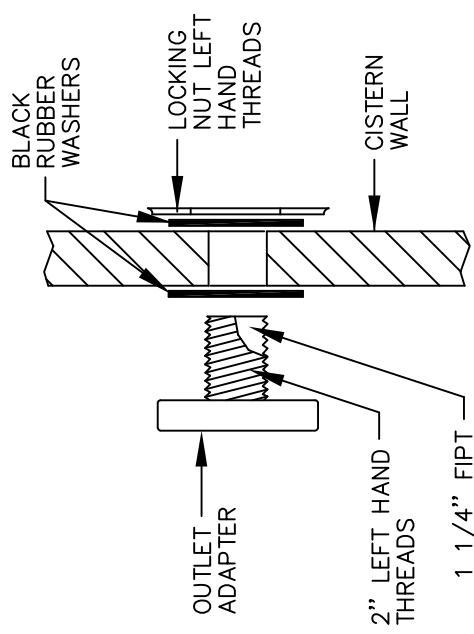


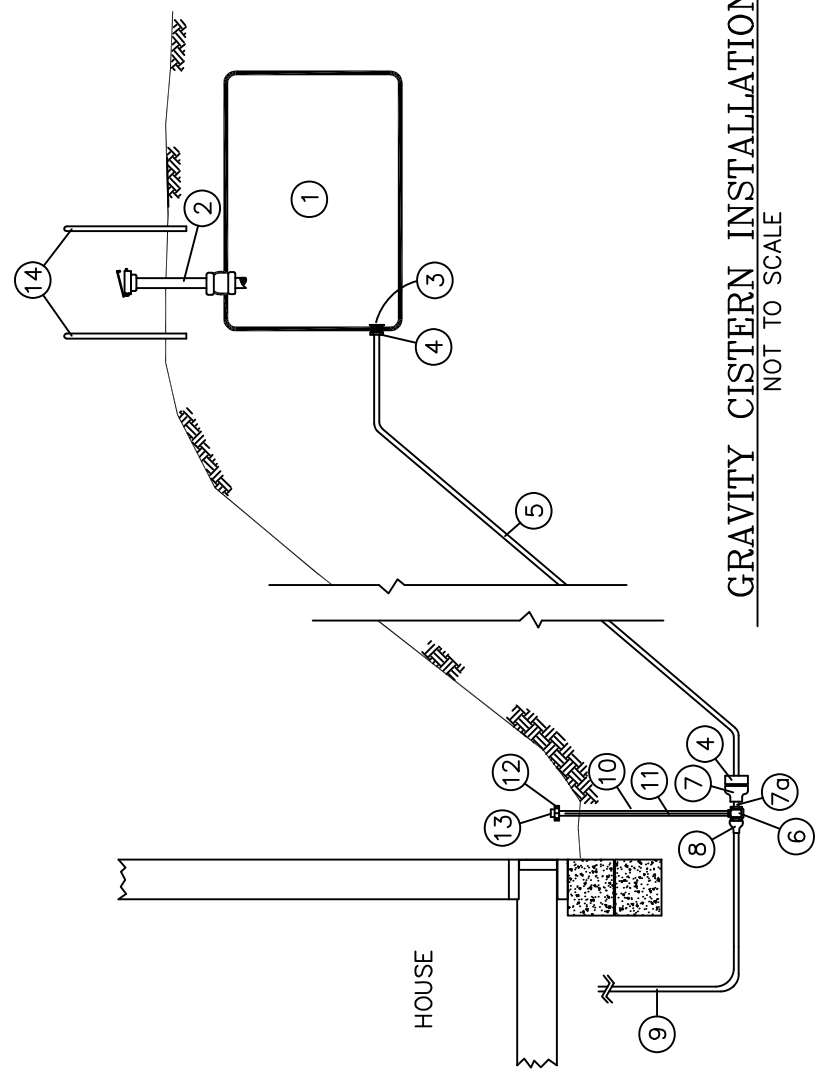
ITEM	QUAN.	DESCRIPTION
1	1	1000 GALLON CISTERN TANK
2	1	FILL PIPE ASSEMBLY PROVIDED WITH TANK
3	1	OUTLET FITTING ASSEMBLY PROVIDED WITH TANK
4	2	ADAPTER, 1 1/4" MIPT X PE. W/STAINLESS STEEL CLAMP
5	-	PIPE, 1 1/4" PE, 100 PSI. (AS NEEDED)
6	1	CURB STOP, 1" FIPT X FIPT
7	1	REDUCER, 1 1/4" X 1"
7a	1	NIPPLE, BRASS, 1" X CLOSE
8	1	ADAPTER, 1" MIPT X 3/4" COMPRESSION
9	1	PEX TUBING (AS NEEDED)
10	1	DOMESTIC STOP VALVE BOX, 3" PVC - DWV.
11	1	STATIONARY ROD
12	1	ADAPTER, 3" HUB X FIPT, PVC - DWV.
13	1	CLEANOUT PLUG, 3" MIPT, PVC - DWV.
14	2	MARKER POSTS
15	1	200 GALLON PE WATER HAULING TANK (NOT SHOWN)



FILL PIPE DETAIL
NOT TO SCALE



OUTLET FITTING DETAIL
NOT TO SCALE



GRAVITY CISTERN INSTALLATION
NOT TO SCALE

REVISION	DATE	BRIEF	BY
2	5/06	MOVED CURB STOP TO HOUSE	M.M.
1	7/99	STANDARDIZED	B.M.

U.S. DEPARTMENT OF HEALTH AND HUMAN SERVICES
PUBLIC HEALTH SERVICE
INDIAN HEALTH SERVICE
NAVAJO NATION

NAVAJO NATION,
STANDARD DRAWING NO. W-26
GRAVITY CISTERN INSTALLATION

OFFICE OF ENVIRONMENTAL HEALTH AND ENGINEERING
NAVAJO AREA OFFICE, WINDOW ROCK, ARIZONA

DRAWN BY: H.M.S. | CHECKED BY: M.V.M. | APPR. BY: | AUTOCAD
DATE: 9/29/93 | DATE: 9/29/93 | DATE: | DRAWING