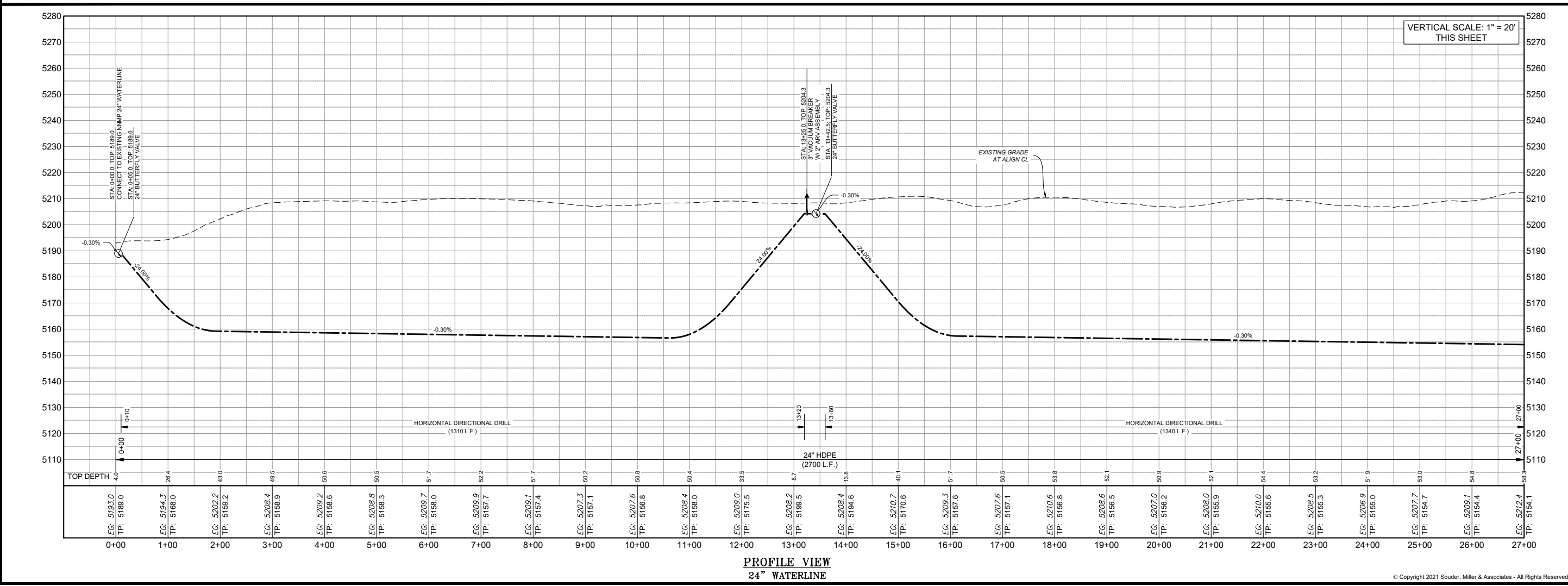


PLAN VIEW
24" WATERLINE



PROFILE VIEW
24" WATERLINE

P:\6-NNMP-Re-Alignment\CAD\Civil\Construction Plans\NNMP - (1).dwg
7/8/2021 1:51:32 PM anv

Revision	Date	Description	By

SMA
SOUDEY, MILLER & ASSOCIATES
Engineering • Environmental • Geomatics
Serving the Southwest & Rocky Mountains
5454 Venice Avenue NE, Suite D
Albuquerque, NM 87113
Phone (505) 299-0942 Fax (505) 293-3430
www.soudermiller.com

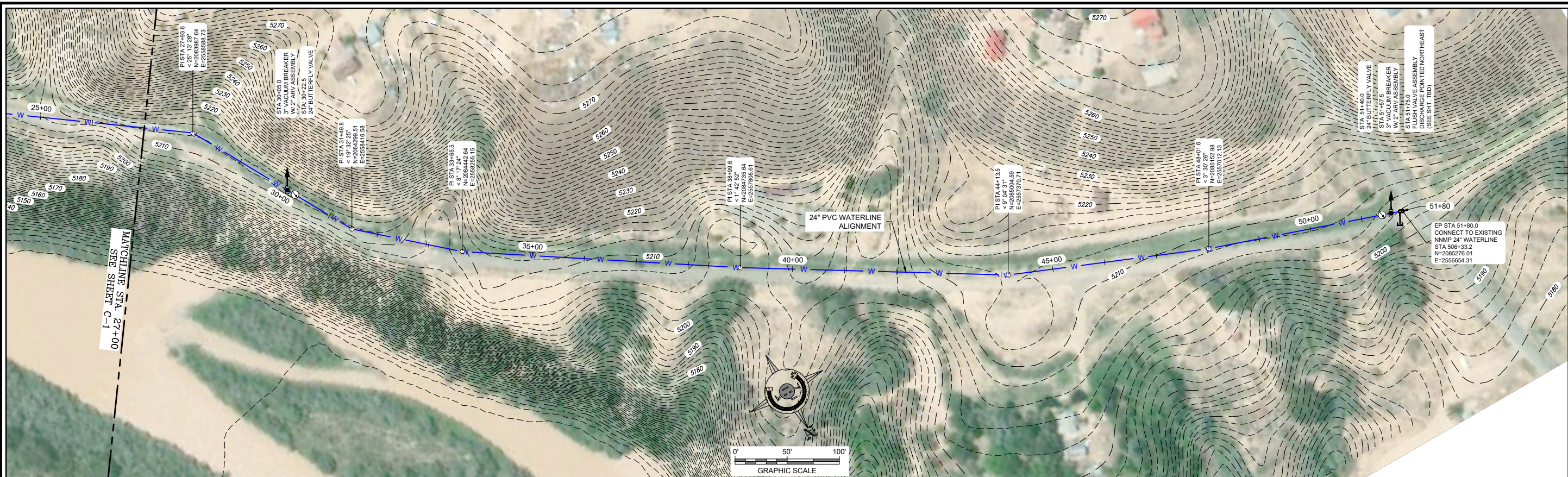
Client: The Navajo Nation
Location: Nemenahnezad, NM
PLAN AND PROFILE
NAVAJO NATION MUNICIPAL PIPELINE
ANIMAS - LA PLATA PROJECT
SAN JUAN COUNTY, NEW MEXICO

Designed	Drawn	Checked
TTT	MvH/A/v	JMG

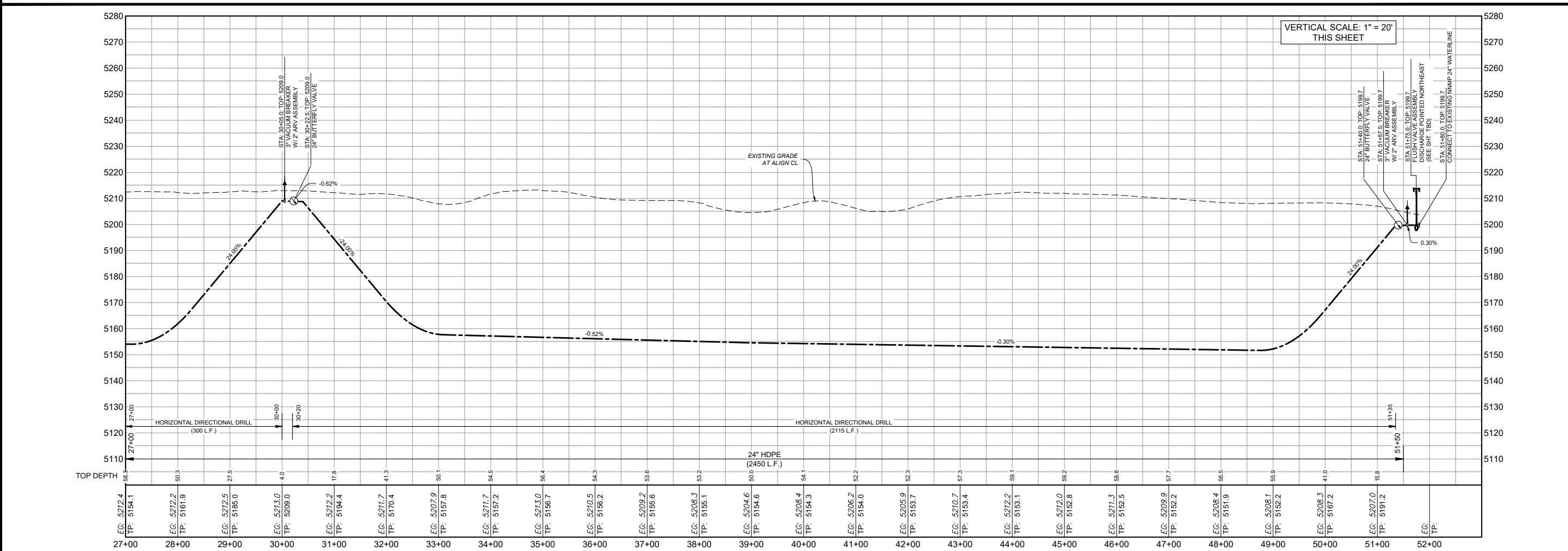
30% REVIEW
DRAFT
PRELIMINARY
NOT FOR CONSTRUCTION
7/2021

THIS DRAWING IS
INCOMPLETE AND NOT
TO BE USED FOR
CONSTRUCTION UNLESS
IT IS STAMPED, SIGNED
AND DATED

811 Know what's below. Call before you dig.
Date: July 2021
Scale: Horiz: 1" = 100'
Vert: 1" = 20'
Project No: 6921224
Sheet: C-1



PLAN VIEW
24" WATERLINE



PROFILE VIEW
24" WATERLINE

P:\6-NMMP Re-Alignment\CAD\Civil\Construction Plans\NMMP - (1).dwg
7/8/2021 1:54:38 PM anv

Revision	Date	Description	By	Chk'd

SMA
Engineering & Environmental
Geomatics

SOUDER, MILLER & ASSOCIATES
Engineering • Environmental • Geomatics
Serving the Southwest & Rocky Mountains
5454 Venice Avenue NE, Suite D
Albuquerque, NM 87113
Phone (505) 299-0949 Fax (505) 293-3430
www.soudermiller.com

Client: The Navajo Nation
Location: Nainahnezad, NM

PLAN AND PROFILE
NAVAJO NATION MUNICIPAL PIPELINE
ANIMAS - LA PLATA PROJECT
SAN JUAN COUNTY, NEW MEXICO

Designed: TTT
Drawn: MvH/A/v
Checked: JMG

30% REVIEW DRAFT

PRELIMINARY
NOT FOR CONSTRUCTION
7/2021

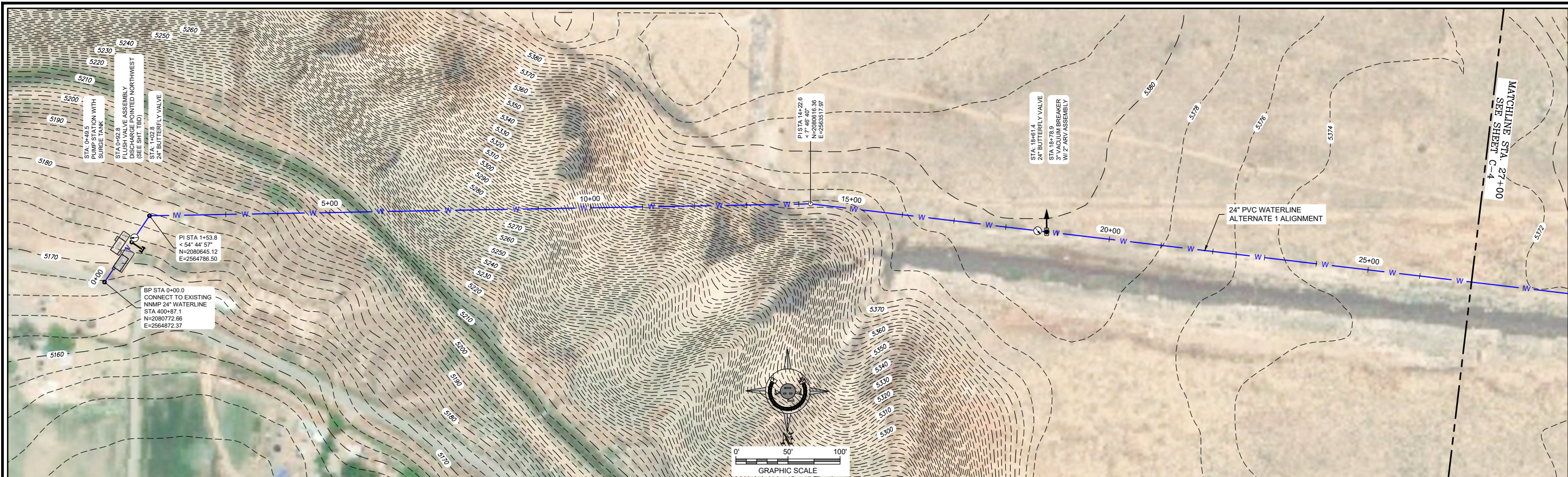
THIS DRAWING IS INCOMPLETE AND NOT TO BE USED FOR CONSTRUCTION UNLESS IT IS STAMPED, SIGNED AND DATED

811 Know what's below. Call before you dig.

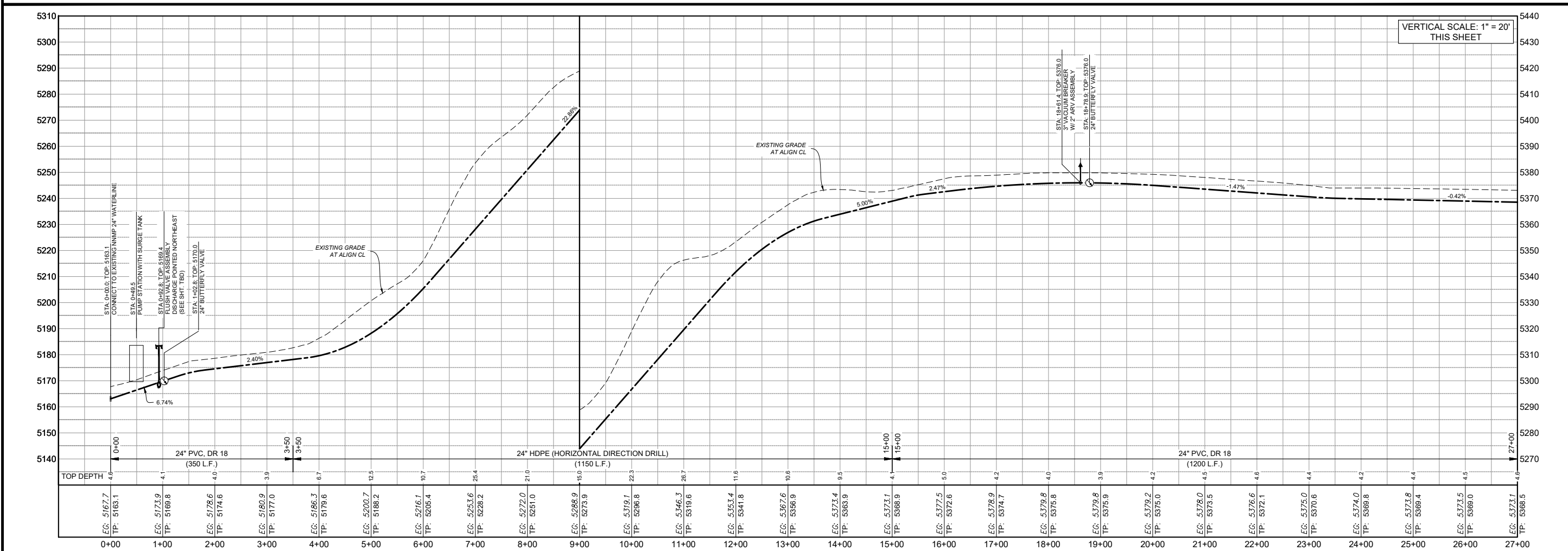
Date: July 2021
Scale: Horiz: 1" = 100'
Vert: 1" = 20'

Project No: 6921244
Sheet: C-2

Copyright 2021 Souder, Miller & Associates - All Rights Reserved



PLAN VIEW
24" WATERLINE



PROFILE VIEW
24" WATERLINE

P:\6-NMMP-Re-Alignment\CAD\Civil\Construction Plans\NMMP ALT - (1).dwg
7/8/2021 1:55:04 PM anv

Revision	Date	Description	By	Chk'd

SMA
Engineering & Environmental Geomatics

SOUDER, MILLER & ASSOCIATES
Engineering • Environmental • Geomatics
Serving the Southwest & Rocky Mountains
5454 Venice Avenue NE, Suite D
Albuquerque, NM 87113
Phone (505) 299-0945 Fax (505) 293-3430
www.soudermiller.com

Client: The Navajo Nation
Location: Nemenahnezad, NM

ALTERNATE 1 ALIGNMENT PLAN AND PROFILE
NAVAJO NATION MUNICIPAL PIPELINE
ANIMAS - LA PLATA PROJECT
SAN JUAN COUNTY, NEW MEXICO

Designed	Drawn	Checked
TTT	MVM/AVV	JMG

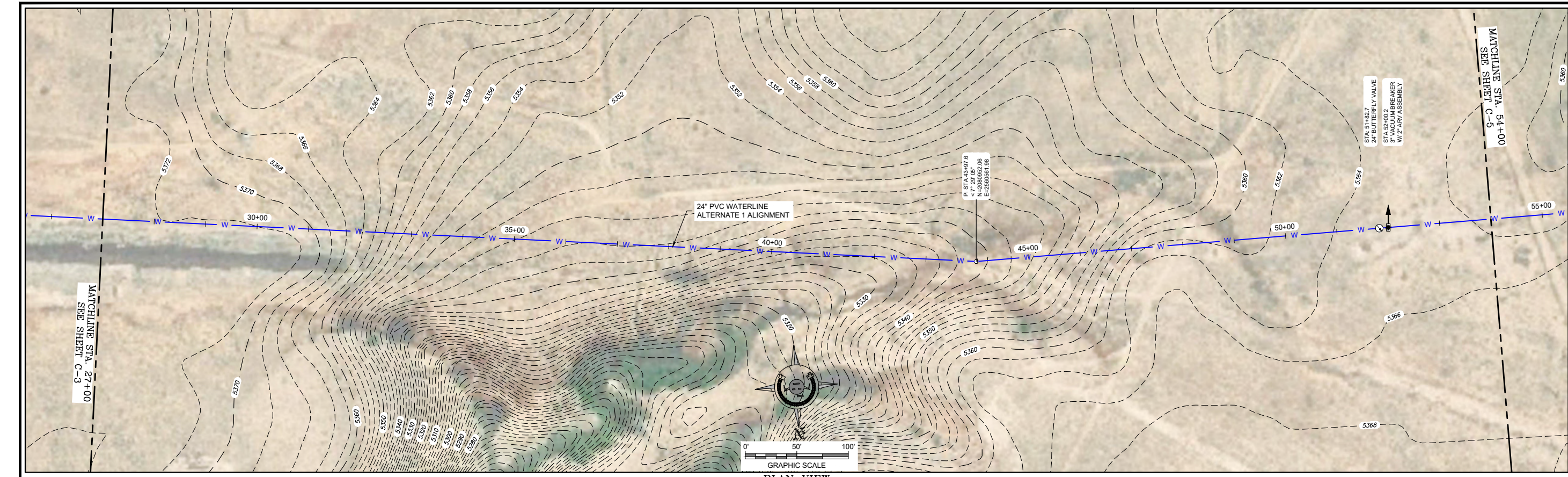
30% REVIEW
DRAFT
PRELIMINARY
NOT FOR CONSTRUCTION
7/2021

THIS DRAWING IS
INCOMPLETE AND NOT
TO BE USED FOR
CONSTRUCTION UNLESS
IT IS STAMPED, SIGNED
AND DATED

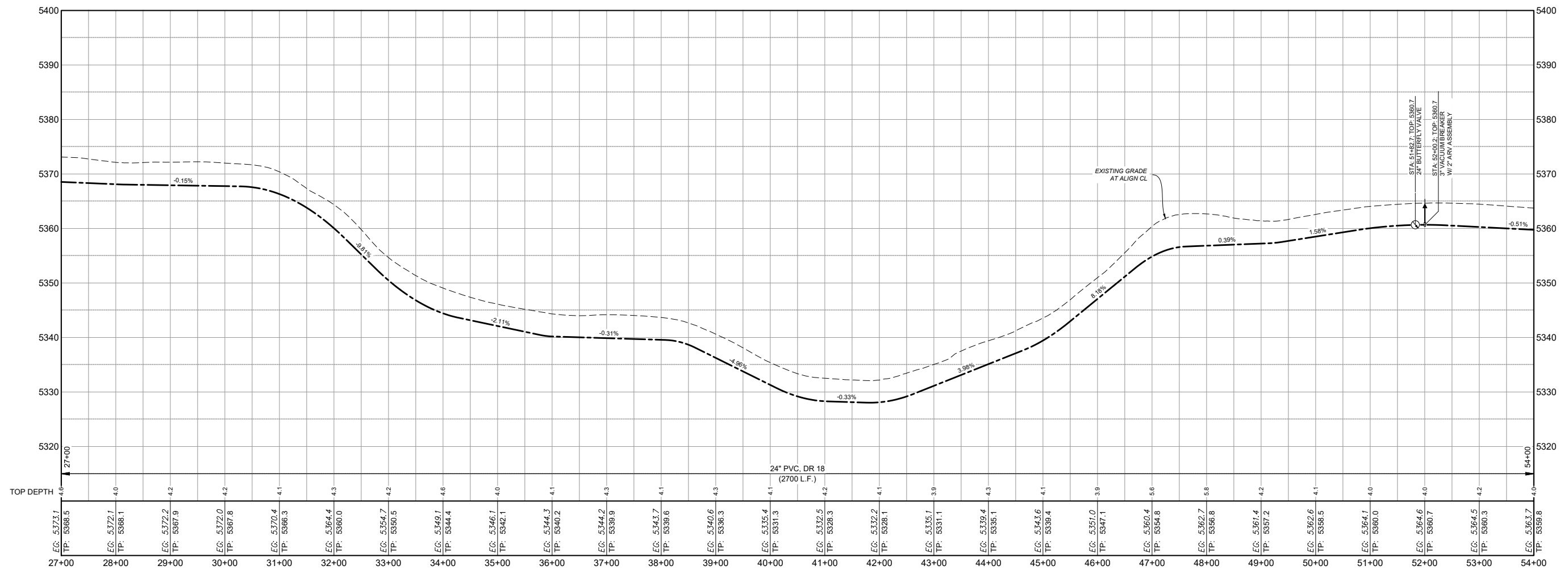
811 Know what's below. Call before you dig.

Date: July 2021
Scale: Horiz: 1" = 100'
Vert: 1" = 20'

Project No: 6921244
Sheet: C-3



PLAN VIEW
24" WATERLINE



PROFILE VIEW
24" WATERLINE

P:\6-NMMP-Re-Alignment\CAD\Civil\Construction Plans\NMMP ALT - (1).dwg
7/8/2021 1:55:13 PM anv

Revision	Date	Description	By	CHKD

SMA
Soudier, Miller & Associates
Engineering • Environmental • Geomatics
Serving the Southwest & Rocky Mountains
5454 Venice Avenue NE, Suite D
Albuquerque, NM 87113
Phone (505) 299-0942 Fax (505) 293-3430
www.soudiermiller.com

Client: The Navajo Nation
Location: Nemenahnezad, NM
ALTERNATE 1 ALIGNMENT PLAN AND PROFILE
NAVAJO NATION MUNICIPAL PIPELINE
ANIMAS - LA PLATA PROJECT
SAN JUAN COUNTY, NEW MEXICO

Designed	Drawn	Checked
TTT	MvH/AaV	JMG

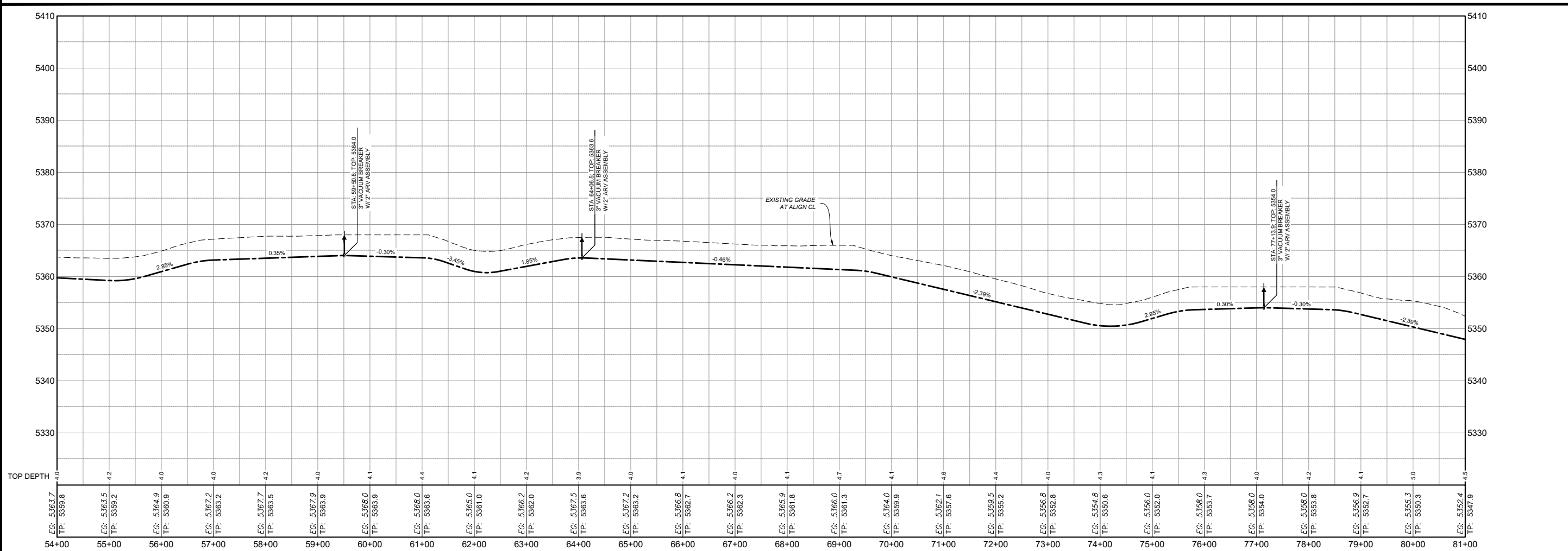
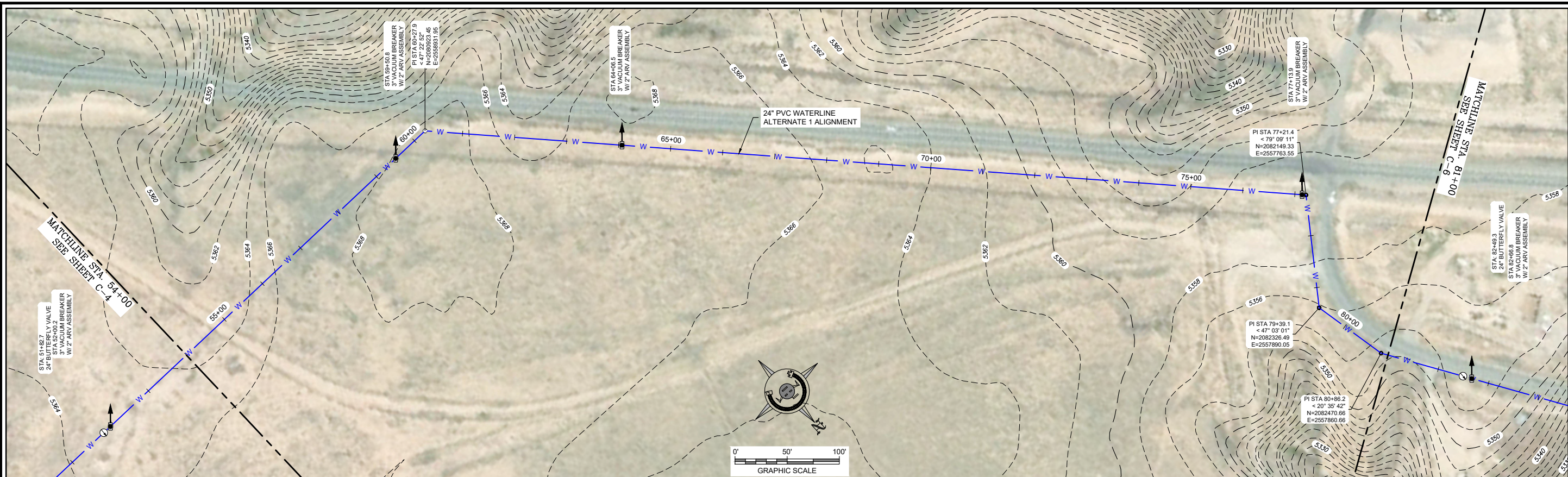
30% REVIEW
DRAFT
PRELIMINARY
NOT FOR CONSTRUCTION
7/2021

THIS DRAWING IS
INCOMPLETE AND NOT
TO BE USED FOR
CONSTRUCTION UNLESS
IT IS STAMPED, SIGNED
AND DATED

811 Know what's below. Call before you dig.

Date: July 2021
Scale: Horiz: 1" = 100'
Vert: 1" = 12'

Project No: 6921244
Sheet: C-4



P:\6-NMMP-Re-Alignment\CAD\Civil\Construction Plans\NMMP ALT - (1).dwg
 7/8/2021 1:55:20 PM anv

Revision	Date	Description	By	CHKD

SMA
 Souder, Miller & Associates
 Engineering • Environmental • Geomatics
 Serving the Southwest & Rocky Mountains
 5454 Venice Avenue NE, Suite D
 Albuquerque, NM 87113
 Phone (505) 299-0942 Fax (505) 293-3430
 www.soudermiller.com

Client: The Navajo Nation
 Location: Nainahnezad, NM
ALTERNATE 1 ALIGNMENT PLAN AND PROFILE
NAVAJO NATION MUNICIPAL PIPELINE
ANIMAS - LA PLATA PROJECT
 SAN JUAN COUNTY, NEW MEXICO

Designed	Drawn	Checked
TTT	MvH/AaV	JMG

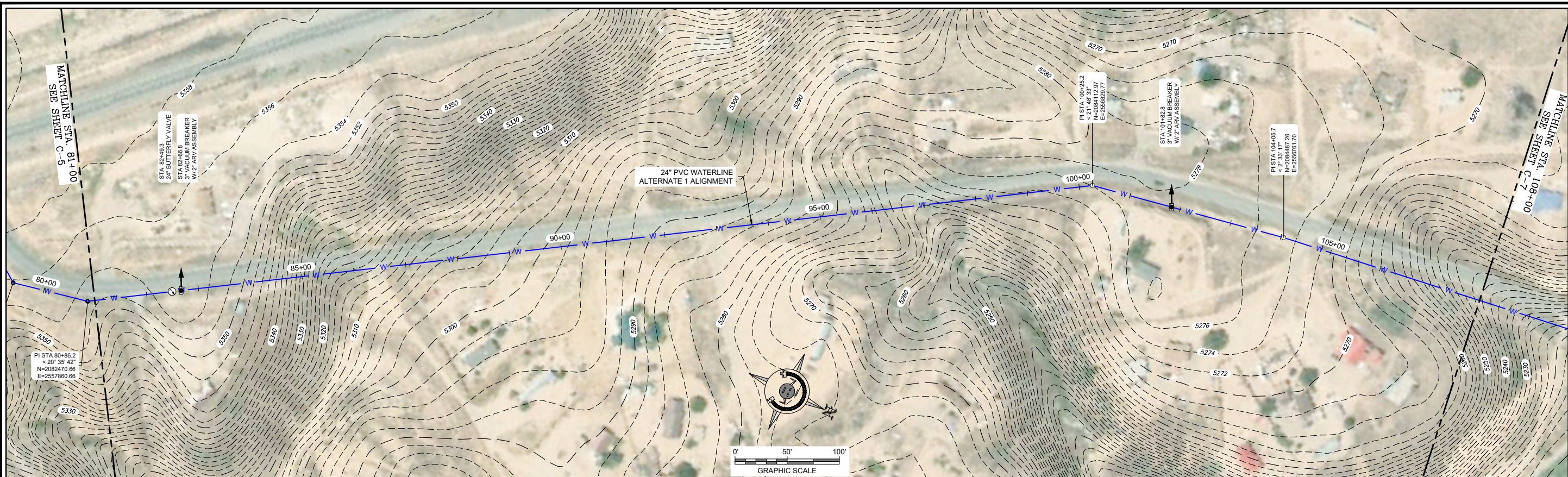
30% REVIEW
DRAFT
 PRELIMINARY
 NOT FOR CONSTRUCTION
 7/2021

THIS DRAWING IS
 INCOMPLETE AND NOT
 TO BE USED FOR
 CONSTRUCTION UNLESS
 IT IS STAMPED, SIGNED
 AND DATED

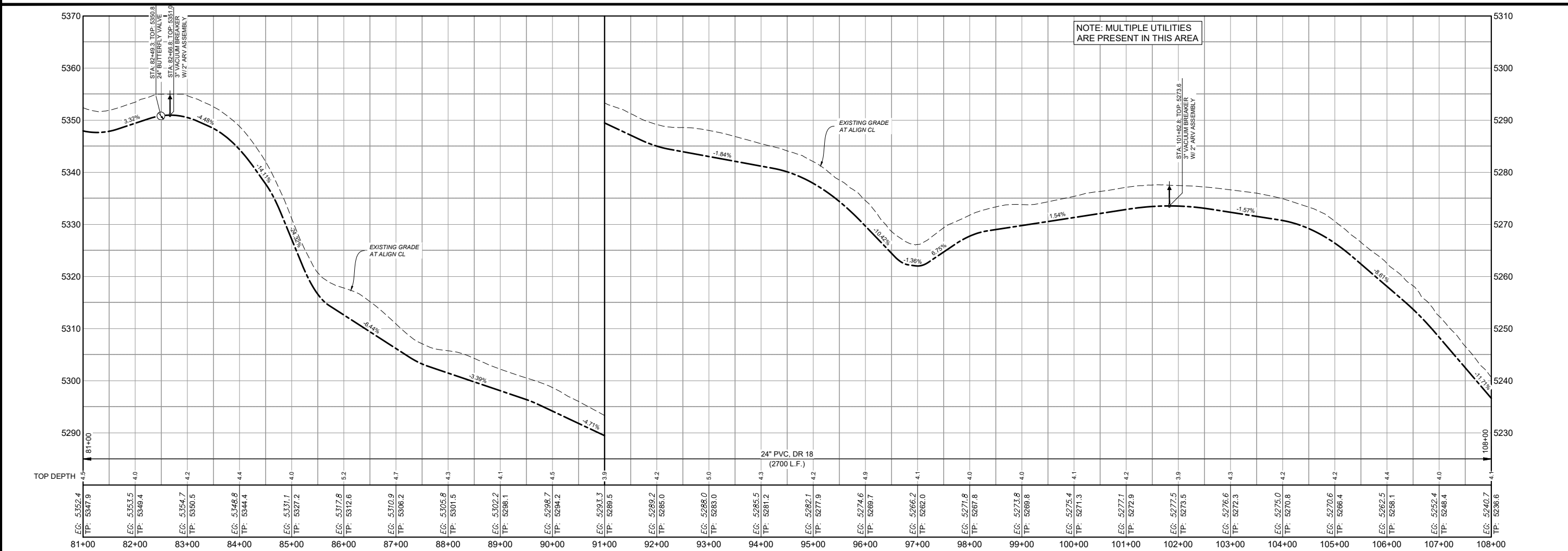
811 Know what's below. Call before you dig.

Date: July 2021
 Scale: Horiz: 1" = 100'
 Vert: 1" = 12'

Project No: 6921244
 Sheet: C-5



PLAN VIEW
24" WATERLINE



PROFILE VIEW
24" WATERLINE

P:\6-NMMP-Re-Alignment\CAD\Civil\Construction Plans\NMMP ALT - (1).dwg
7/9/2021 1:55:31 PM anv

Revision	Date	Description	By	Chkd

SMA
Engineering • Environmental • Geomatics

SOUDER, MILLER & ASSOCIATES
Engineering • Environmental • Geomatics
Serving the Southwest & Rocky Mountains
5454 Venice Avenue NE, Suite D
Albuquerque, NM 87113
Phone (505) 299-0942 Fax (505) 293-3430
www.soudermiller.com

Client: The Navajo Nation
Location: Nemenahnezad, NM

ALTERNATE 1 ALIGNMENT PLAN AND PROFILE
NAVAJO NATION MUNICIPAL PIPELINE
ANIMAS - LA PLATA PROJECT
SAN JUAN COUNTY, NEW MEXICO

Designed	Drawn	Checked
TTT	MvH/A/v	JMG

30% REVIEW
DRAFT

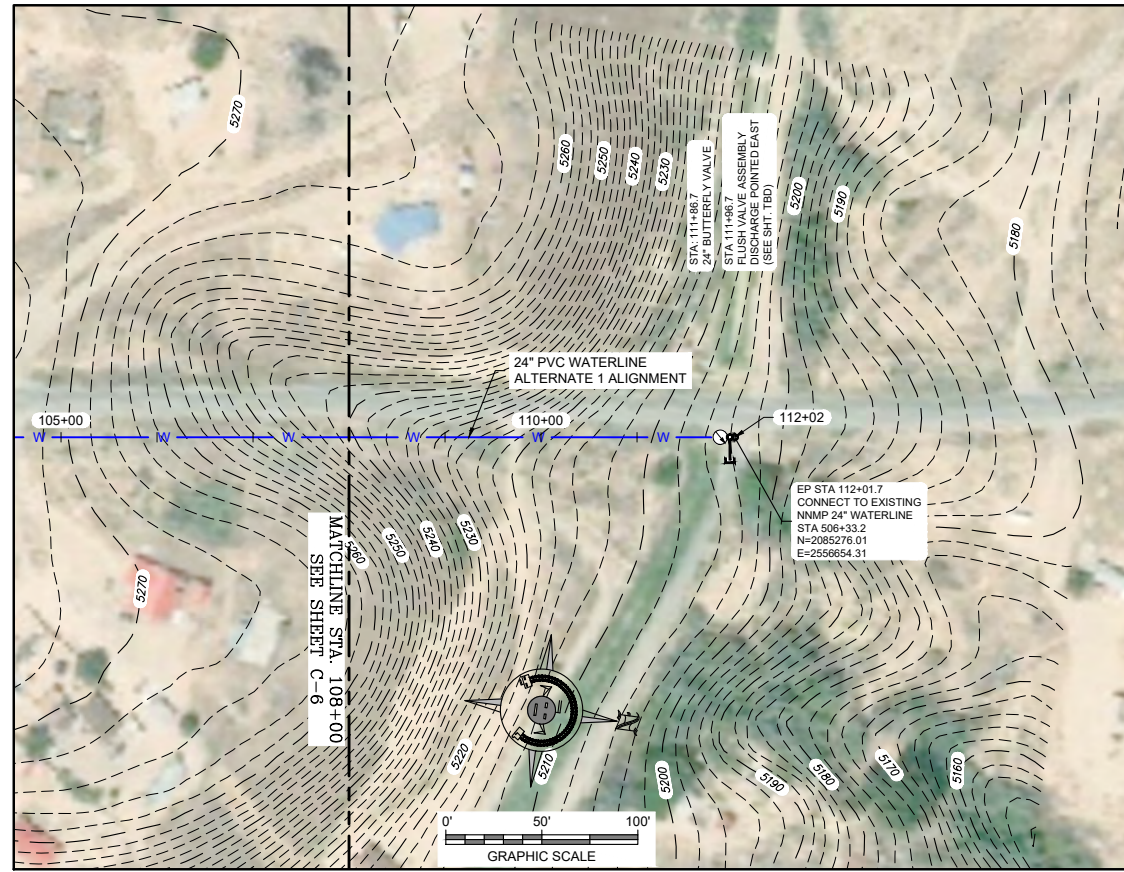
PRELIMINARY
NOT FOR CONSTRUCTION
7/2021

THIS DRAWING IS
INCOMPLETE AND NOT
TO BE USED FOR
CONSTRUCTION UNLESS
IT IS STAMPED, SIGNED
AND DATED

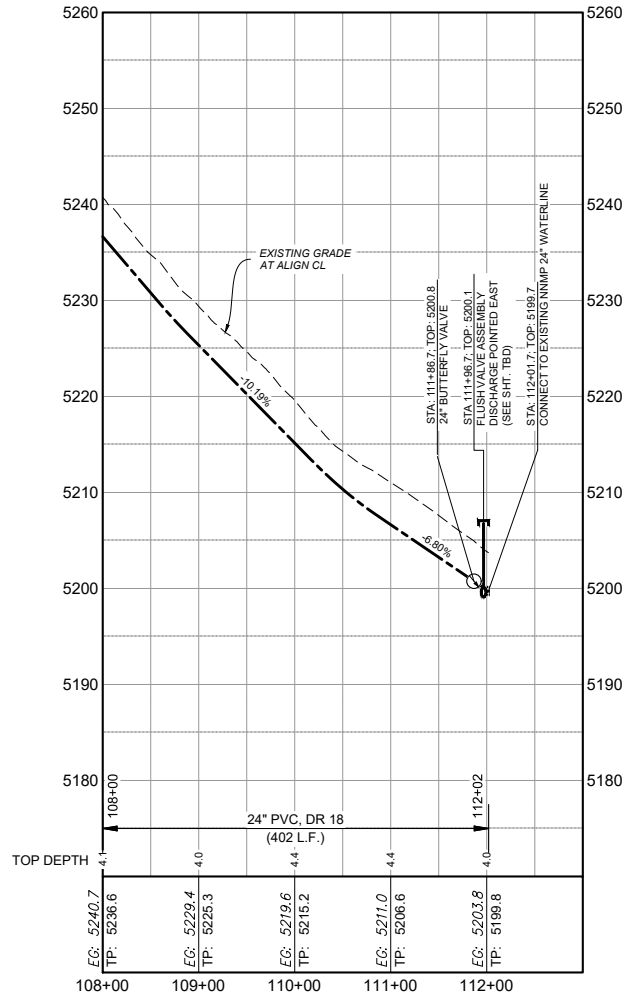
811 Know what's below.
Call before you dig.

Date: July 2021
Scale: Horiz: 1" = 100'
Vert: 1" = 12'

Project No: 6921244
Sheet: C-6



PLAN VIEW
24" WATERLINE



PROFILE VIEW
24" WATERLINE

Revision	Date	Description	By	Chkd

SMA
Engineering • Environmental • Geomatics

SOUDER, MILLER & ASSOCIATES
Engineering • Environmental • Geomatics
Serving the Southwest & Rocky Mountains
5454 Venice Avenue NE, Suite D
Albuquerque, NM 87113
Phone (505) 299-0942 Fax (505) 293-3430
www.soudermiller.com

Client: The Navajo Nation
Location: Nainahnezad, NM

ALTERNATE 1 ALIGNMENT PLAN AND PROFILE
NAVAJO NATION MUNICIPAL PIPELINE
ANIMAS - LA PLATA PROJECT
SAN JUAN COUNTY, NEW MEXICO

Designed	Drawn	Checked
TTT	MvH/AaV	JMG

30% REVIEW
DRAFT

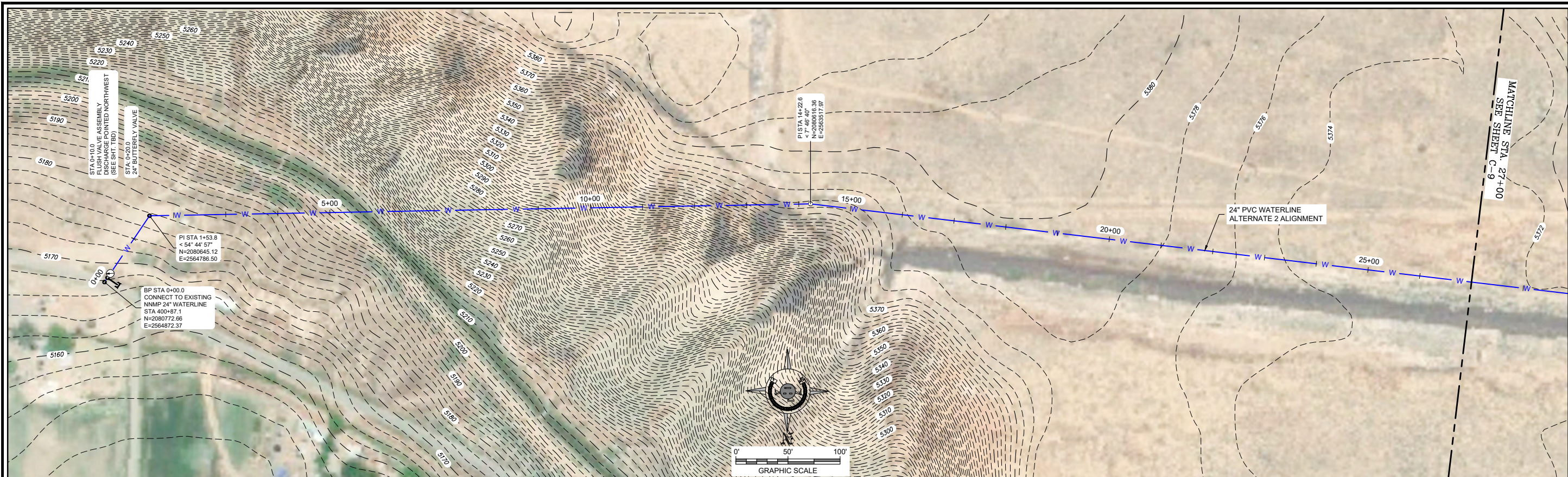
PRELIMINARY
NOT FOR CONSTRUCTION
7/2021

THIS DRAWING IS
INCOMPLETE AND NOT
TO BE USED FOR
CONSTRUCTION UNLESS
IT IS STAMPED, SIGNED
AND DATED

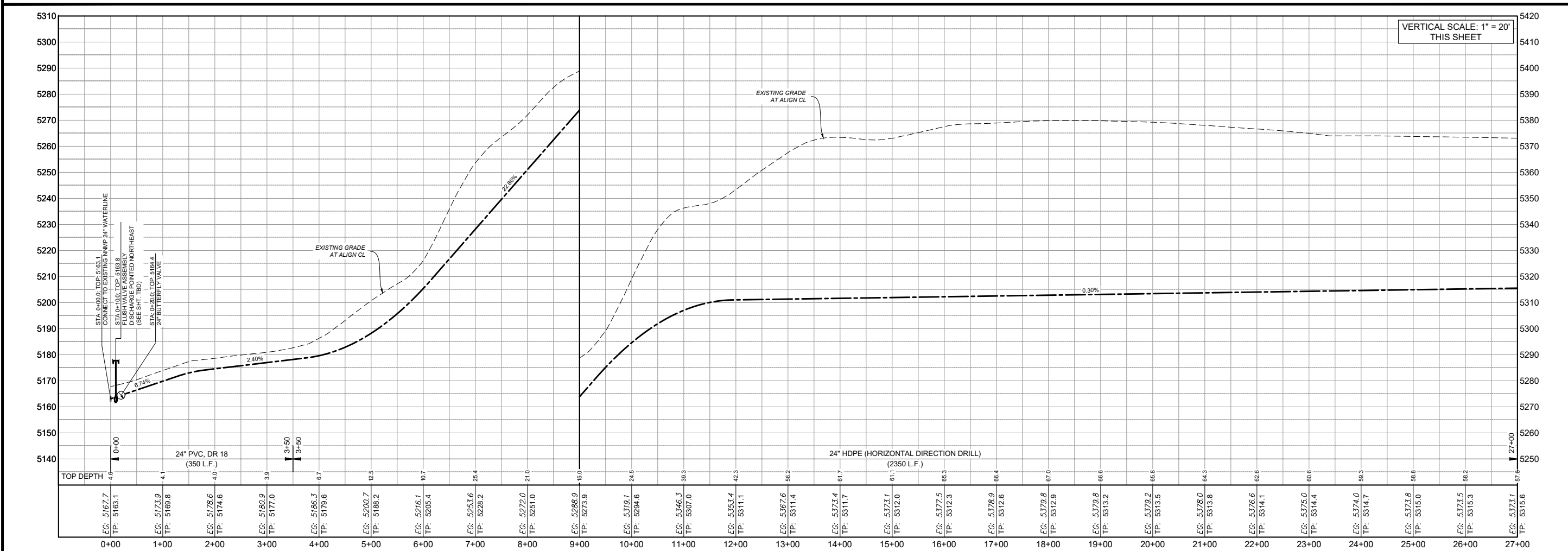
811 Know what's below. Call before you dig.

Date: July 2021
Scale: Horiz: 1" = 100'
Vert: 1" = 10'

Project No: 6921244
Sheet: C-7



PLAN VIEW
24" WATERLINE



PROFILE VIEW
24" WATERLINE

P:\6-NNMP-Alignment\CAD\Construction Plans\NNMP ALT - (1).dwg
7/8/2021, 1:55:43 PM anv

Revision	Date	Description	By	CHKD

SMA
Engineering & Environmental Geomatics

SOUDER, MILLER & ASSOCIATES
Engineering • Environmental • Geomatics
Serving the Southwest & Rocky Mountains
5454 Venice Avenue NE, Suite D
Albuquerque, NM 87113
Phone (505) 299-0945 Fax (505) 293-3430
www.soudermiller.com

Client: The Navajo Nation
Location: Nainahnezad, NM

ALTERNATE 2 ALIGNMENT PLAN AND PROFILE
NAVAJO NATION MUNICIPAL PIPELINE
ANIMAS - LA PLATA PROJECT
SAN JUAN COUNTY, NEW MEXICO

Designed: TTT
Drawn: MvM/A/v
Checked: JMG

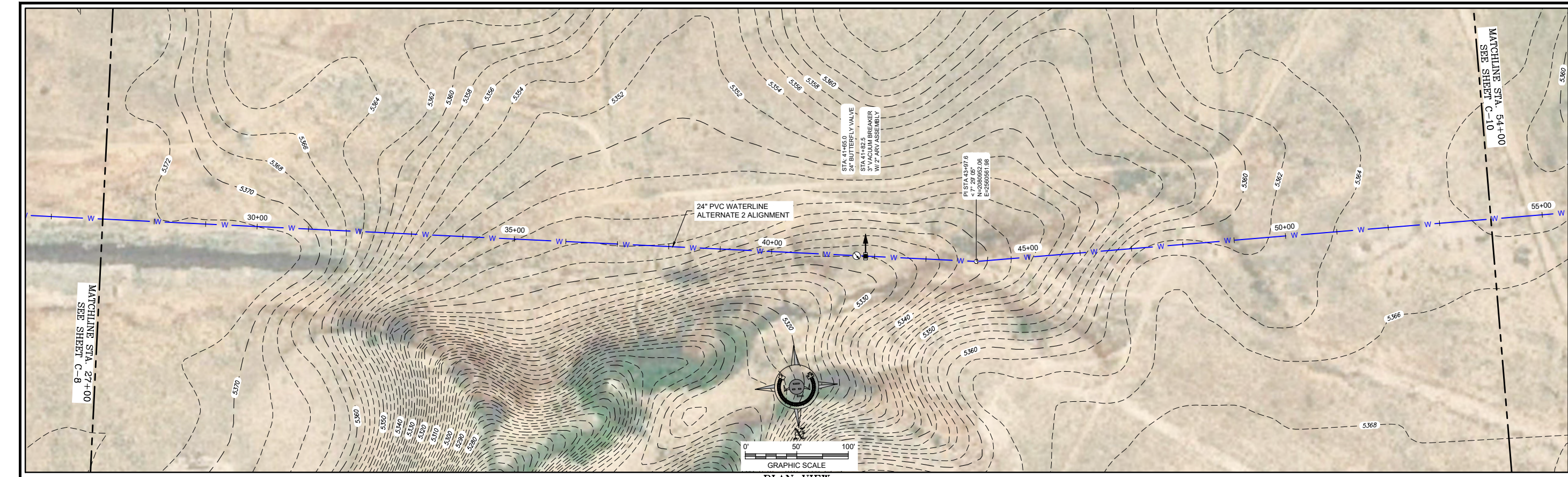
30% REVIEW
DRAFT

PRELIMINARY
NOT FOR CONSTRUCTION
7/2021

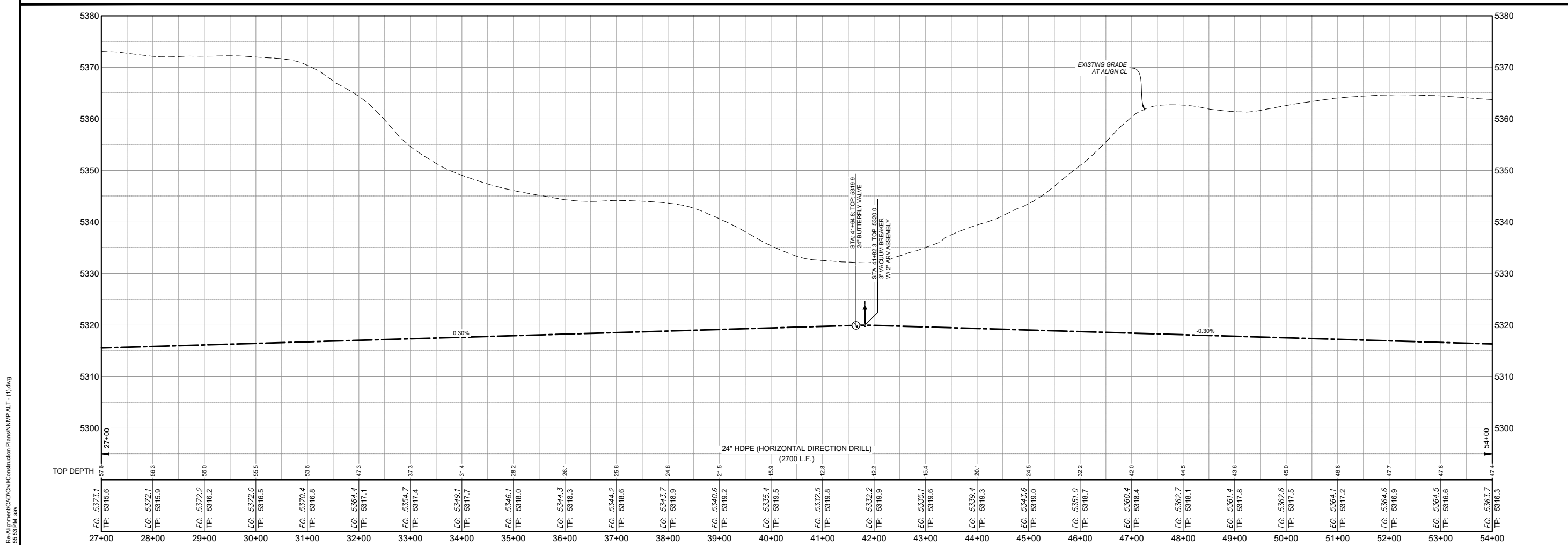
THIS DRAWING IS INCOMPLETE AND NOT TO BE USED FOR CONSTRUCTION UNLESS IT IS STAMPED, SIGNED AND DATED

811 Know what's below. Call before you dig.

Date: July 2021
Scale: Horiz: 1" = 100'
Vert: 1" = 20'
Project No: 6921244
Sheet: **C-8**



PLAN VIEW
24" WATERLINE



PROFILE VIEW
24" WATERLINE

P:\6-NMMP-Alignment\CAD\Civil\Construction Plans\NMMP ALT - (1).dwg
7/8/2021 1:55:53 PM anv

Revision	Date	Description	By	Chk'd

SMA
Soudier, Miller & Associates
Engineering • Environmental • Geomatics
Serving the Southwest & Rocky Mountains
5454 Venice Avenue NE, Suite D
Albuquerque, NM 87113
Phone (505) 299-0942 Fax (505) 293-3430
www.soudiermiller.com

Client: The Navajo Nation
Location: Nainahnezad, NM
ALTERNATE 2 ALIGNMENT PLAN AND PROFILE
NAVAJO NATION MUNICIPAL PIPELINE
ANIMAS - LA PLATA PROJECT
SAN JUAN COUNTY, NEW MEXICO

Designed: TTT
Drawn: MvH/A/v
Checked: JMG

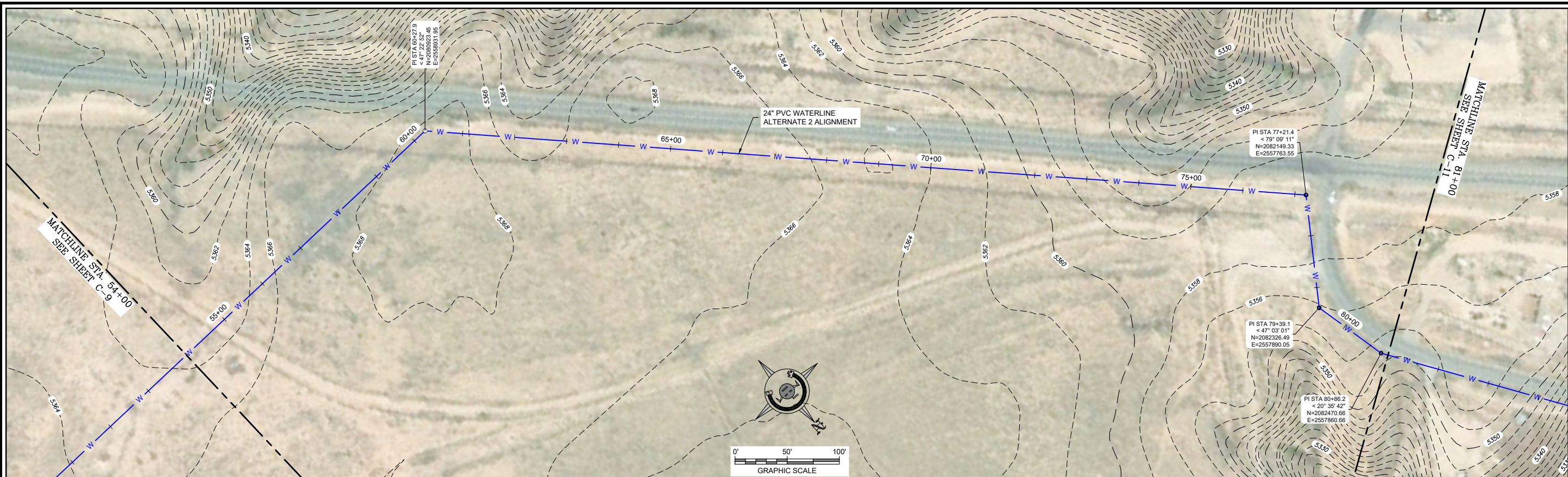
30% REVIEW DRAFT
PRELIMINARY
NOT FOR CONSTRUCTION
7/2021

THIS DRAWING IS INCOMPLETE AND NOT TO BE USED FOR CONSTRUCTION UNLESS IT IS STAMPED, SIGNED AND DATED

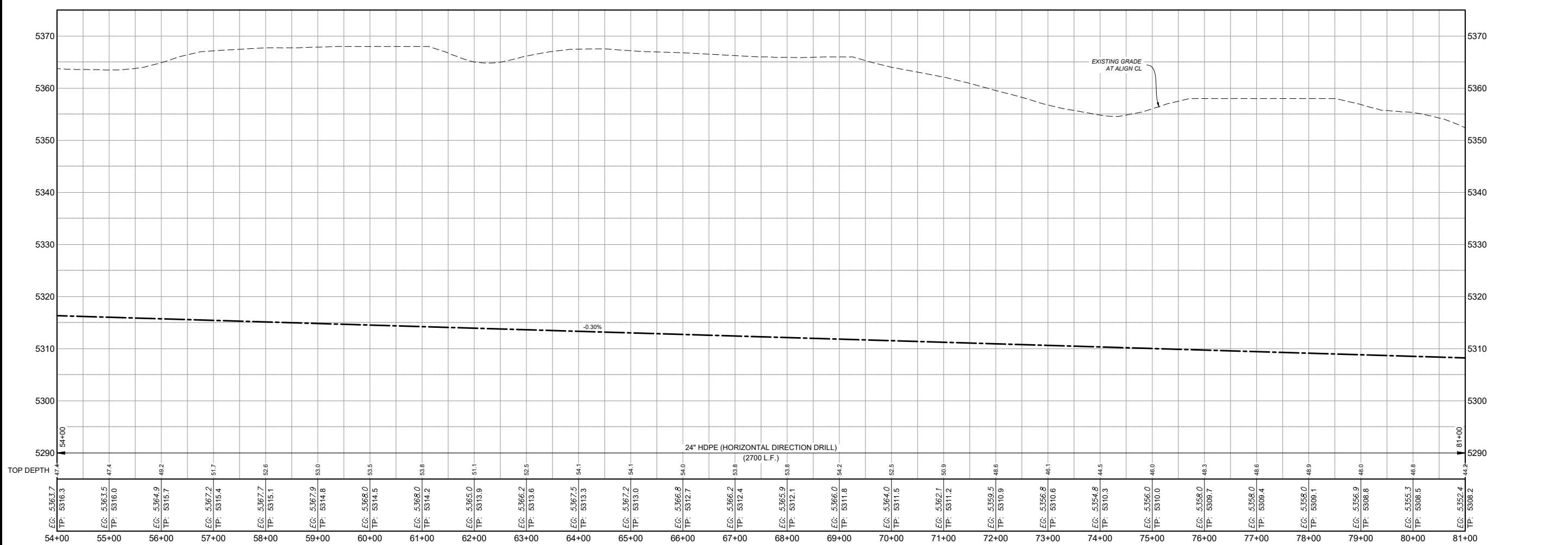
811 Know what's below. Call before you dig.

Date: July 2021
Scale: Horiz: 1" = 100'
Vert: 1" = 12'

Project No: 6921244
Sheet: C-9



PLAN VIEW
24" WATERLINE



PROFILE VIEW
24" WATERLINE

P:\6-NNMP-Res-Alignment\CAD\Civil\Construction Plans\NNMP-ALT-1.dwg
7/8/2021 1:35:07 PM anv

Revision	Date	Description	By	CHKD

SMA
Soudier, Miller & Associates
Engineering • Environmental • Geomatics
Serving the Southwest & Rocky Mountains
5454 Venice Avenue NE, Suite D
Albuquerque, NM 87113
Phone (505) 299-0942 Fax (505) 293-3430
www.soudiermiller.com

Client: The Navajo Nation
Location: Nemenahnezad, NM
ALTERNATE 2 ALIGNMENT PLAN AND PROFILE
NAVAJO NATION MUNICIPAL PIPELINE
ANIMAS - LA PLATA PROJECT
SAN JUAN COUNTY, NEW MEXICO

Designed TTT	Drawn MvH/A/v	Checked JMG
-----------------	------------------	----------------

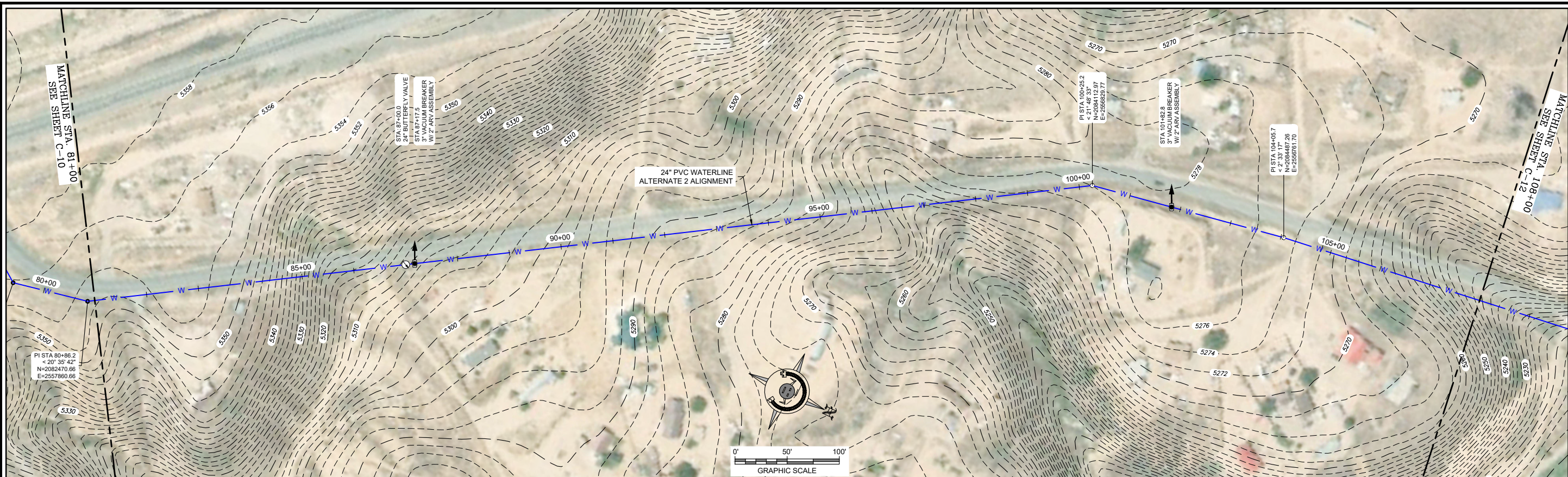
30% REVIEW
DRAFT
PRELIMINARY
NOT FOR CONSTRUCTION
7/2021

THIS DRAWING IS
INCOMPLETE AND NOT
TO BE USED FOR
CONSTRUCTION UNLESS
IT IS STAMPED, SIGNED
AND DATED

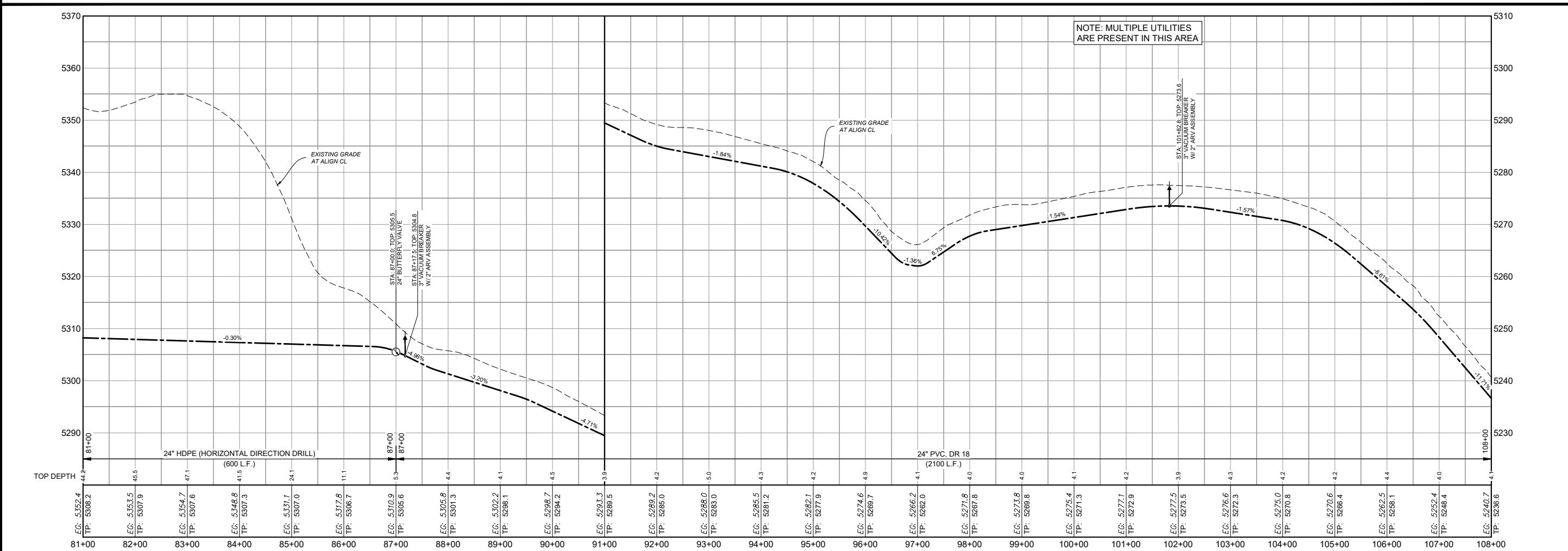
811 Know what's below. Call before you dig.

Date: July 2021
Scale: Horiz: 1" = 100'
Vert: 1" = 10'

Project No: 6921244
Sheet: C-10



PLAN VIEW
24" WATERLINE



PROFILE VIEW
24" WATERLINE

P:\6-NNMP-Re-Alignment\CAD\Civil\Construction Plans\NNMP ALT - (1).dwg
7/8/2021 1:56:15 PM anv

Revision	Date	Description	By	CHKD

SMA
Soudier, Miller & Associates
Engineering • Environmental • Geomatics
Serving the Southwest & Rocky Mountains
5454 Venice Avenue NE, Suite D
Albuquerque, NM 87113
Phone (505) 299-0942 Fax (505) 293-3430
www.soudiermiller.com

Client: The Navajo Nation
Location: Nemenahnezad, NM
ALTERNATE 2 ALIGNMENT PLAN AND PROFILE
NAVAJO NATION MUNICIPAL PIPELINE
ANIMAS - LA PLATA PROJECT
SAN JUAN COUNTY, NEW MEXICO

Designed	Drawn	Checked
TTT	MvH/AvV	JMG

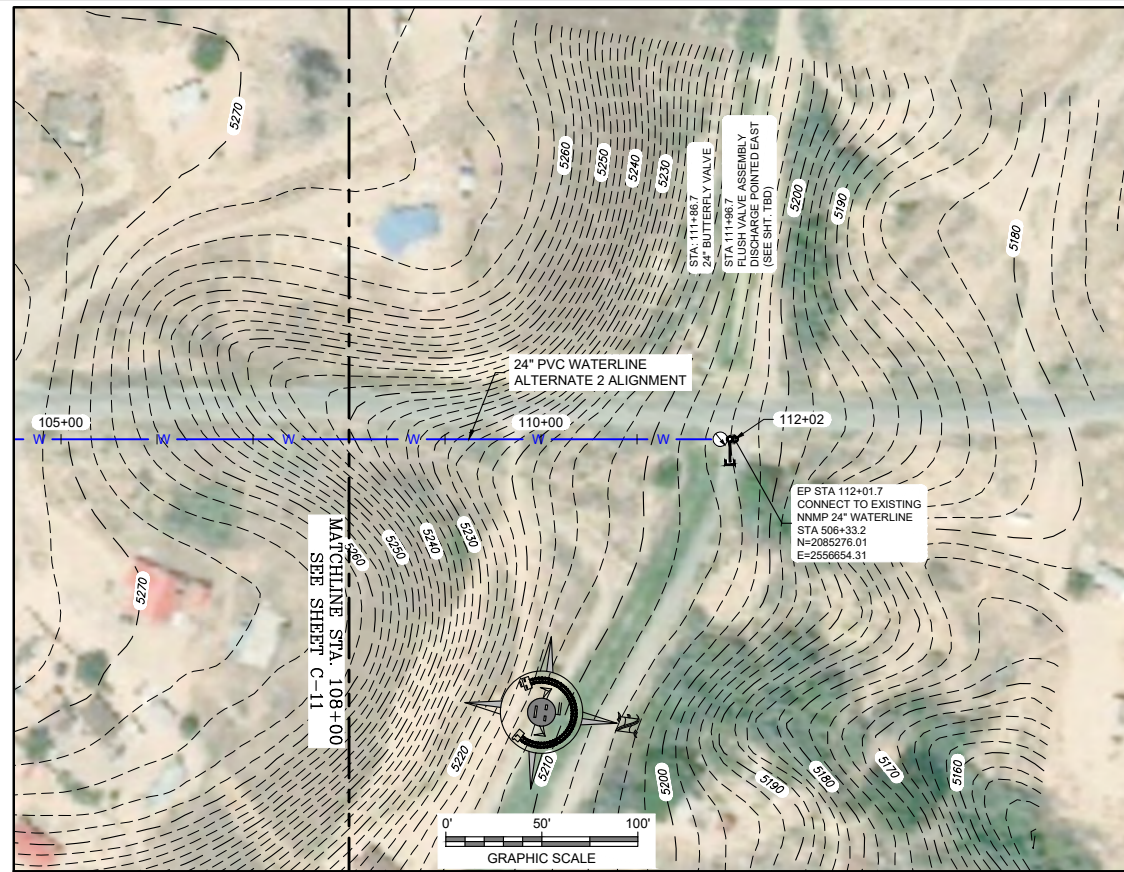
30% REVIEW
DRAFT
PRELIMINARY
NOT FOR CONSTRUCTION
7/2021

THIS DRAWING IS INCOMPLETE AND NOT TO BE USED FOR CONSTRUCTION UNLESS IT IS STAMPED, SIGNED AND DATED

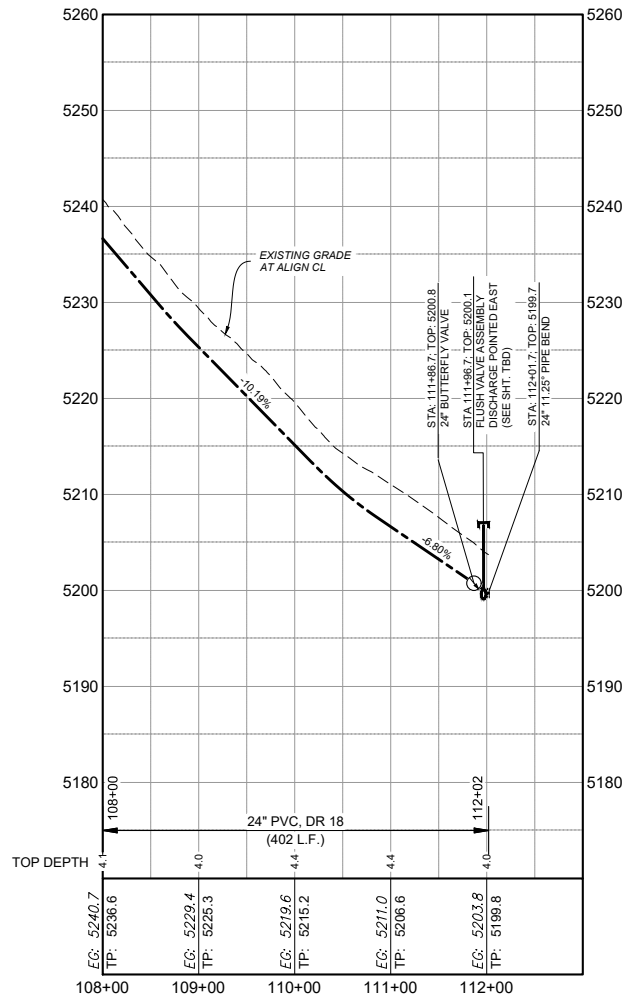
811 Know what's below. Call before you dig.

Date: July 2021
Scale: Horiz: 1" = 100'
Vert: 1" = 10'

Project No: 6921244
Sheet: C-11



PLAN VIEW
24" WATERLINE



PROFILE VIEW
24" WATERLINE

Revision	Date	Description	By	Chkd

SMA
Engineering • Environmental • Geomatics

SOUDER, MILLER & ASSOCIATES
Engineering • Environmental • Geomatics
Serving the Southwest & Rocky Mountains
5454 Venice Avenue NE, Suite D
Albuquerque, NM 87113
Phone (505) 299-0942 Fax (505) 293-3430
www.soudermiller.com

Client: The Navajo Nation
Location: Nainahnezad, NM

ALTERNATE 2 ALIGNMENT PLAN AND PROFILE
NAVAJO NATION MUNICIPAL PIPELINE
ANIMAS - LA PLATA PROJECT
SAN JUAN COUNTY, NEW MEXICO

Designed	Drawn	Checked
TTT	MvH/AAV	JMG

30% REVIEW
DRAFT

PRELIMINARY
NOT FOR CONSTRUCTION
7/2021

THIS DRAWING IS
INCOMPLETE AND NOT
TO BE USED FOR
CONSTRUCTION UNLESS
IT IS STAMPED, SIGNED
AND DATED

811 Know what's
below.
Call before
you dig.

Date: July 2021
Scale: Horiz: 1" = 100'
Vert: 1" = 10'

Project No: 6921244
Sheet: C-12