

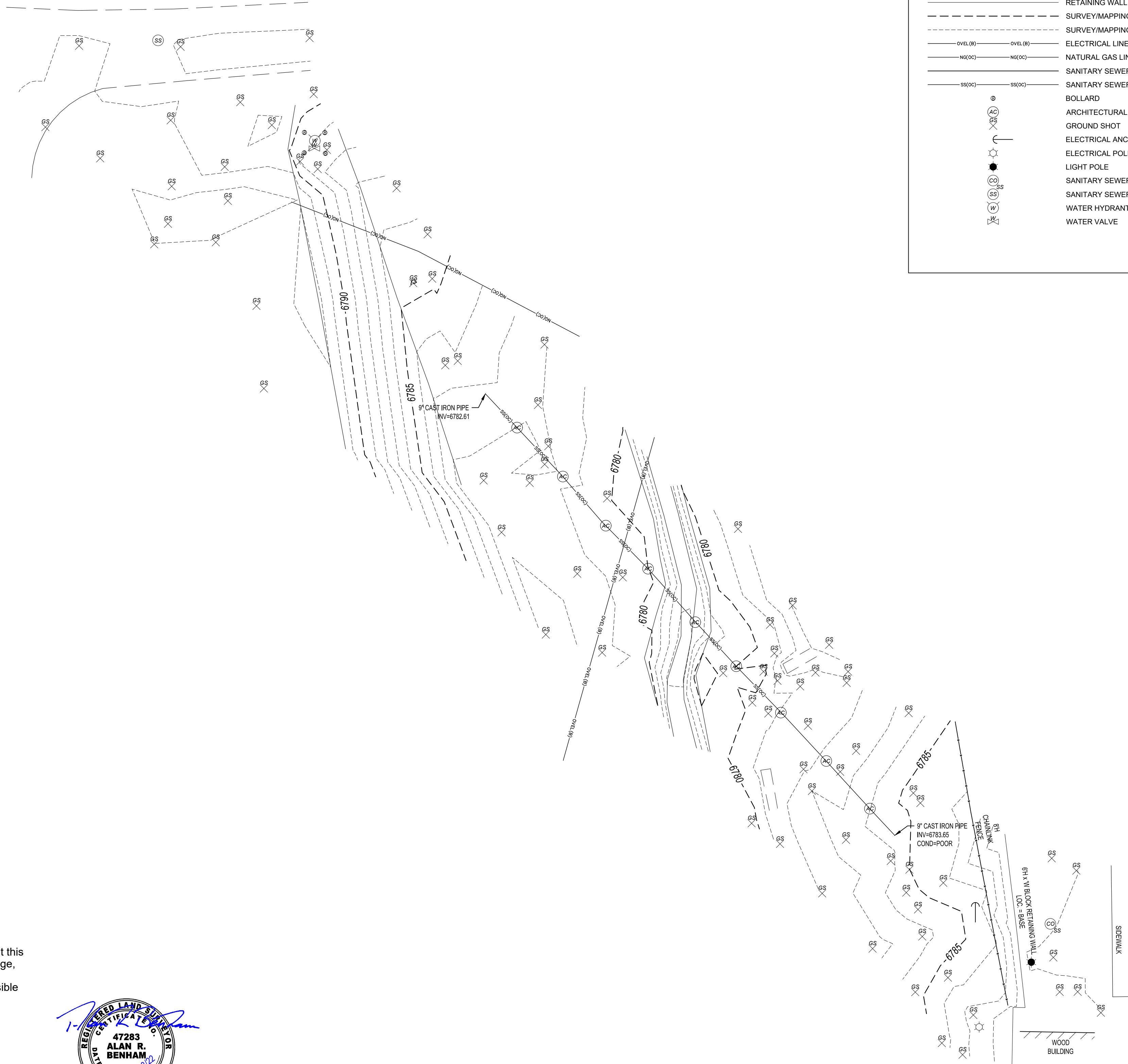


LOCATION MAP  
NOT TO SCALE



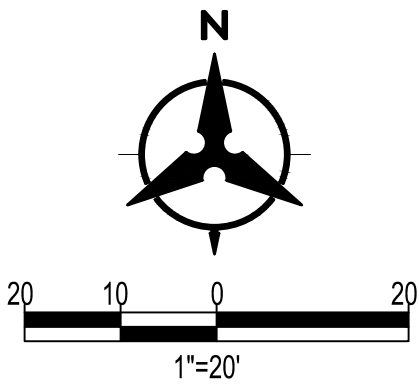
NOTES:

- THIS IS NOT A BOUNDARY SURVEY.
- THE TOPOGRAPHIC MAP IS BASED ON GROUND INTERNATIONAL FOOT MODIFIED STATE PLANE ARIZONA EAST 0201 (AZ83-EIF).
- THE HORIZONTAL DATUM IS BASED ON NAD83 AND THE VERTICAL DATUM IS BASED ON NAVD88 (GEOID18).
- PROJECT COMBINED FACTOR = 0.99969978 BASED ON ACS MONUMENT, BH 22-396-01 (FOR GROUND TO GRID TRANSFORMATION OF THE HORIZONTAL COORDINATES, SCALE ABOUT N = 0, E = 0).
- THIS TOPOGRAPHIC MAP WAS PREPARED FROM GROUND SURVEY DATA COLLECTED BY BHI FIELD SURVEY IN FEBRUARY 2022. THIS SURVEY DATA MEETS ENGINEERING SPECIFICATIONS FOR 1"=50' MAPPING AND HAS A VERTICAL ACCURACY FOR ONE FOOT CONTOURS.
- THE APPROXIMATE CENTER OF THE PROJECT SITE IS LOCATED AT N 35°44'09" LATITUDE, W 109° 04'09" W LONGITUDE. SITE IS LOCATED WITHIN SECTION 18, TOWNSHIP 27 NORTH, RANGE 31 EAST, GILA AND SALT RIVER MERIDIAN, APACHE COUNTY, ARIZONA.



LEGEND	
	BUILDING
	DRAINAGE RIPRAP
	FENCE CHAINLINK
	ROADWAY EDGE DIRT
	SIDEWALK
	BREAKLINES
	TOE OF SLOPE
	TOP OF SLOPE
	RETAINING WALL
	SURVEY/MAPPING SURFACE CONTOUR MAJOR
	SURVEY/MAPPING SURFACE CONTOUR MINOR
	ELECTRICAL LINE OVERHEAD SUE LEVEL B
	NATURAL GAS LINE SUE ONE CALL DESIGNATION
	SANITARY SEWER ANNOTATION
	SANITARY SEWER LINE SUE ONE CALL DESIGNATION
	BOLLARD
	ARCHITECTURAL COLUMN
	GROUND SHOT
	ELECTRICAL ANCHOR/GUY WIRE
	ELECTRICAL POLE
	LIGHT POLE
	SANITARY SEWER CLEANOUT
	SANITARY SEWER MANHOLE
	WATER HYDRANT
	WATER VALVE

TOPOGRAPHIC MAP  
FORT DEFIANC SEWER LINE  
ARROYO CROSSING REHAB  
FORT DEFIANC ARIZONA  
SECTION 18,  
TOWNSHIP 27 NORTH, RANGE 31 EAST  
GILA AND SALT RIVER MERIDIAN  
APACHE COUNTY, ARIZONA  
MARCH 2022



SURVEYOR'S CERTIFICATION:

I, Alan R. Benham, an Arizona Professional Land Surveyor, No. 47283, do hereby certify that this topographic survey and the relative elevations shown are accurate to the best of my knowledge, information and belief; that this topographic survey was prepared by me or under my direct supervision based on an actual survey on the ground as described herein; That I am responsible for this survey.

Alan R. Benham,  
Arizona Professional Land Surveyor No 47283  
for and on behalf of  
Bohannon Huston, Inc.  
7500 Jefferson St. NE  
Albuquerque, NM 87109-4335

March 23, 2022  
Date

