

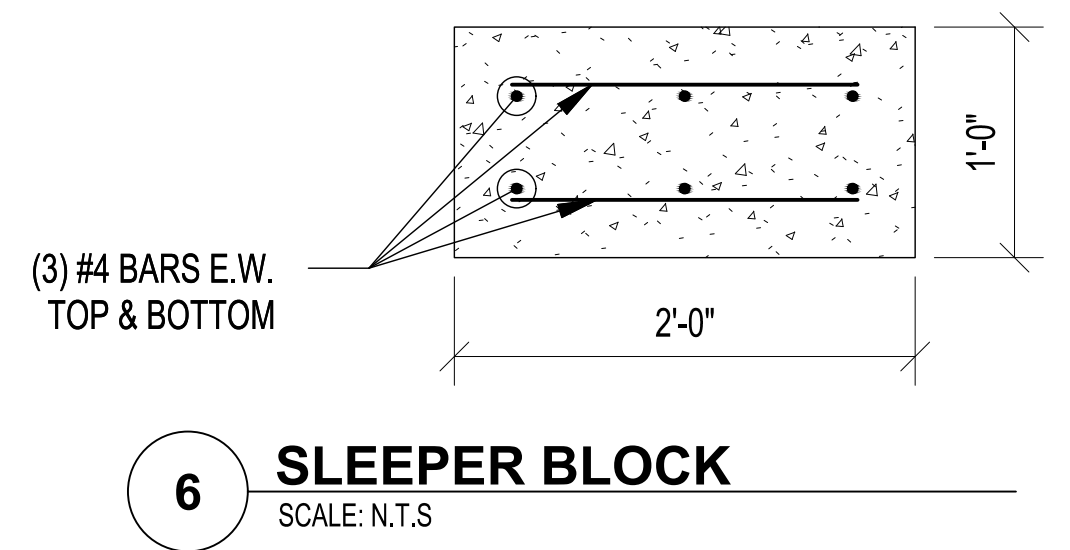
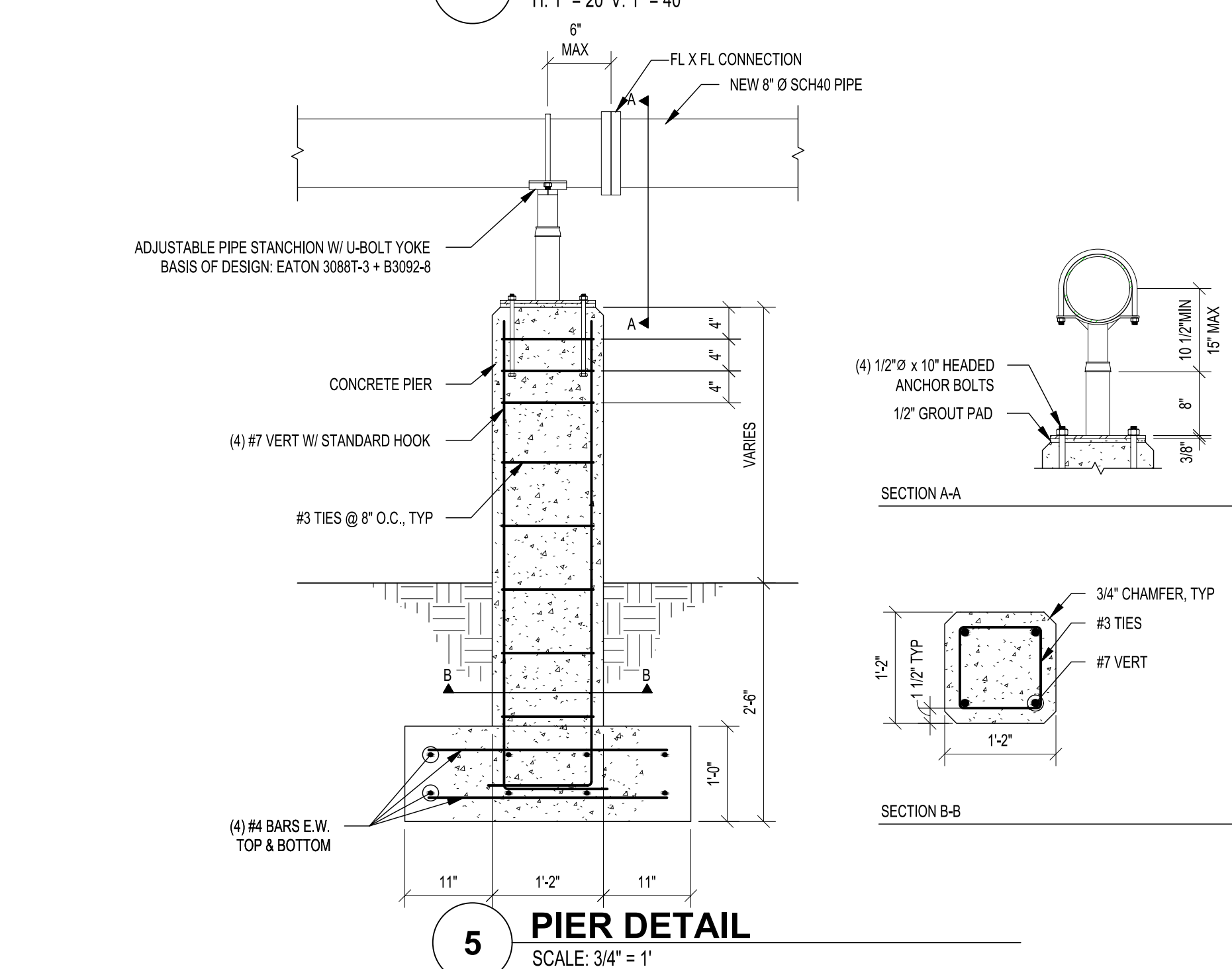
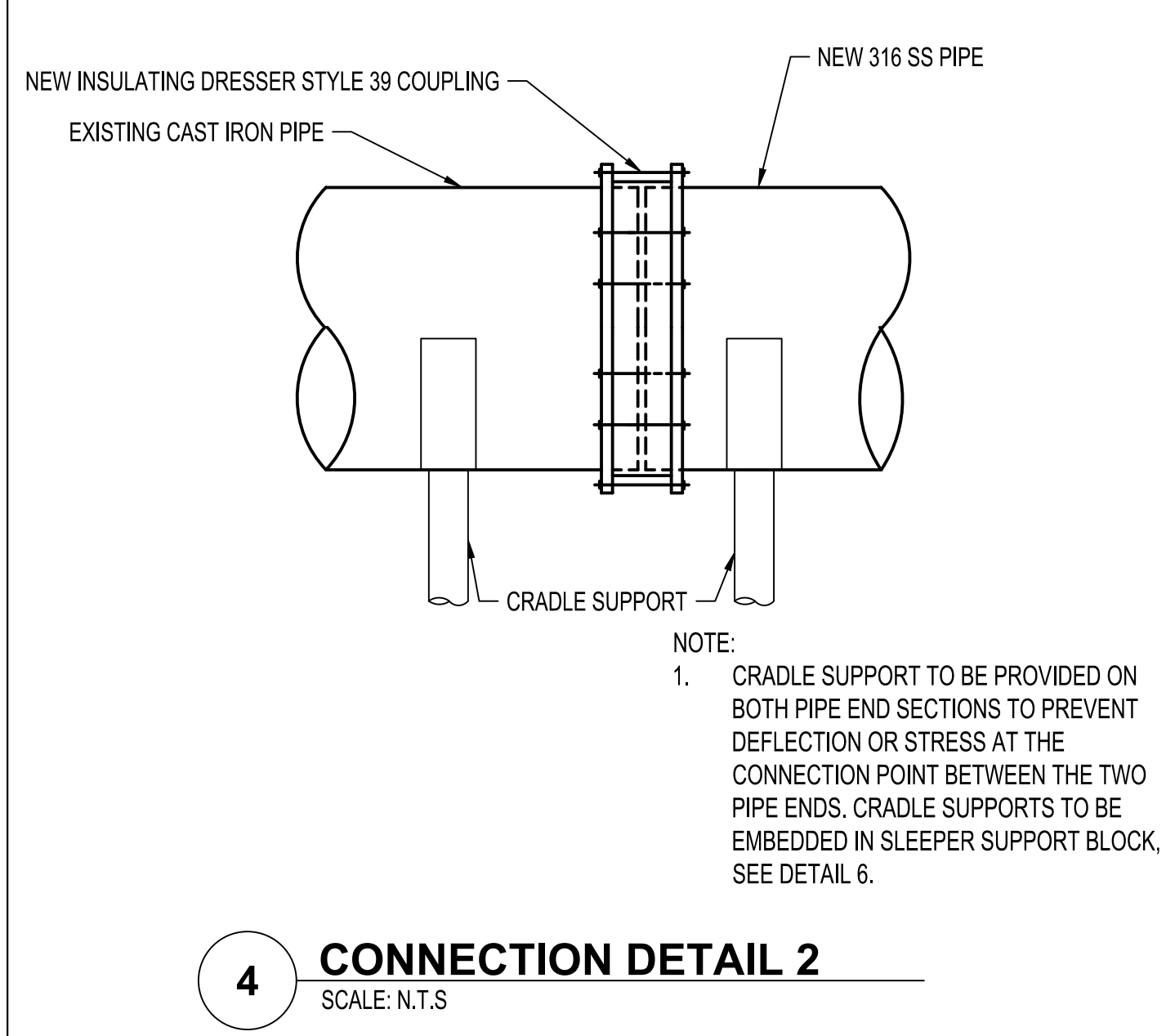
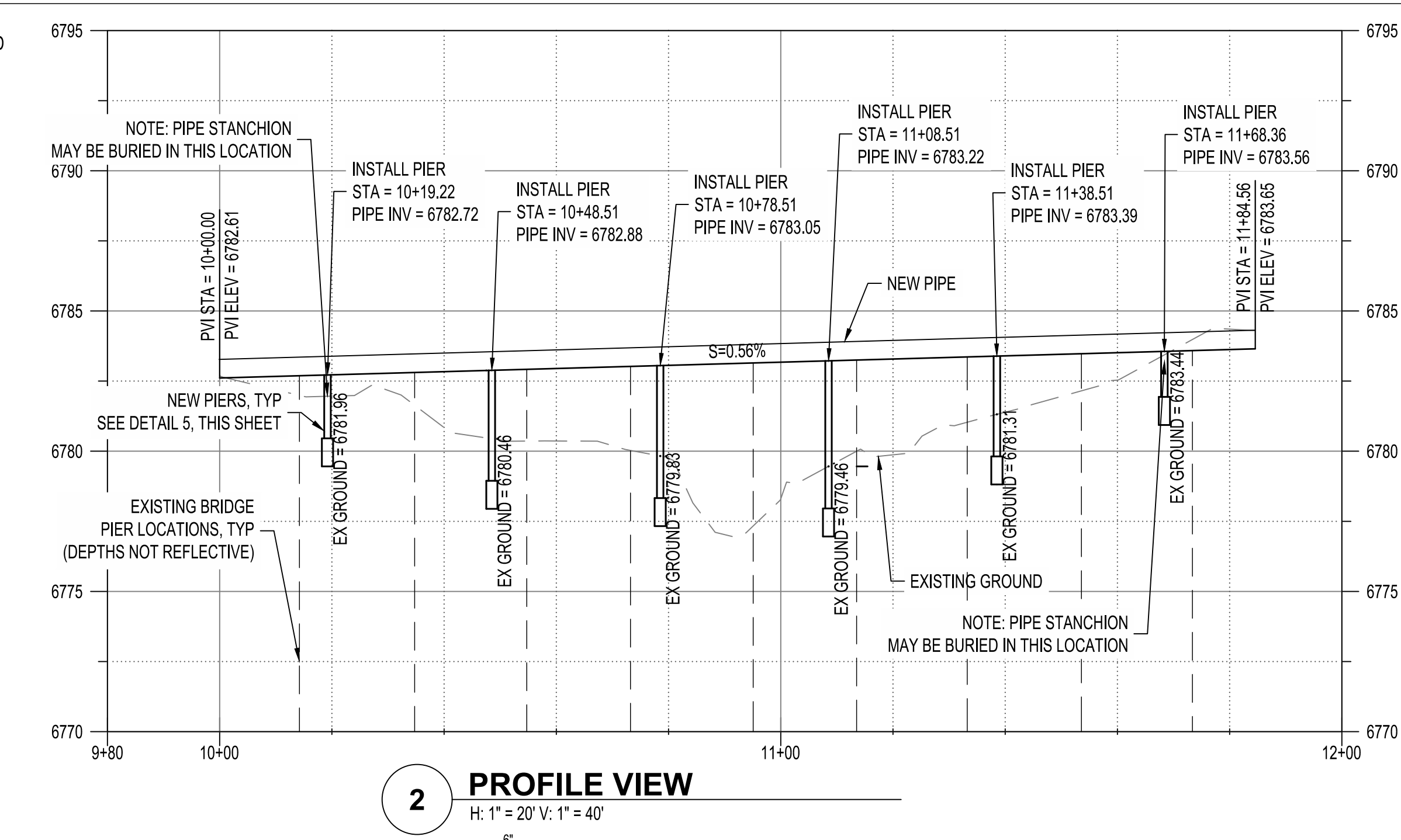
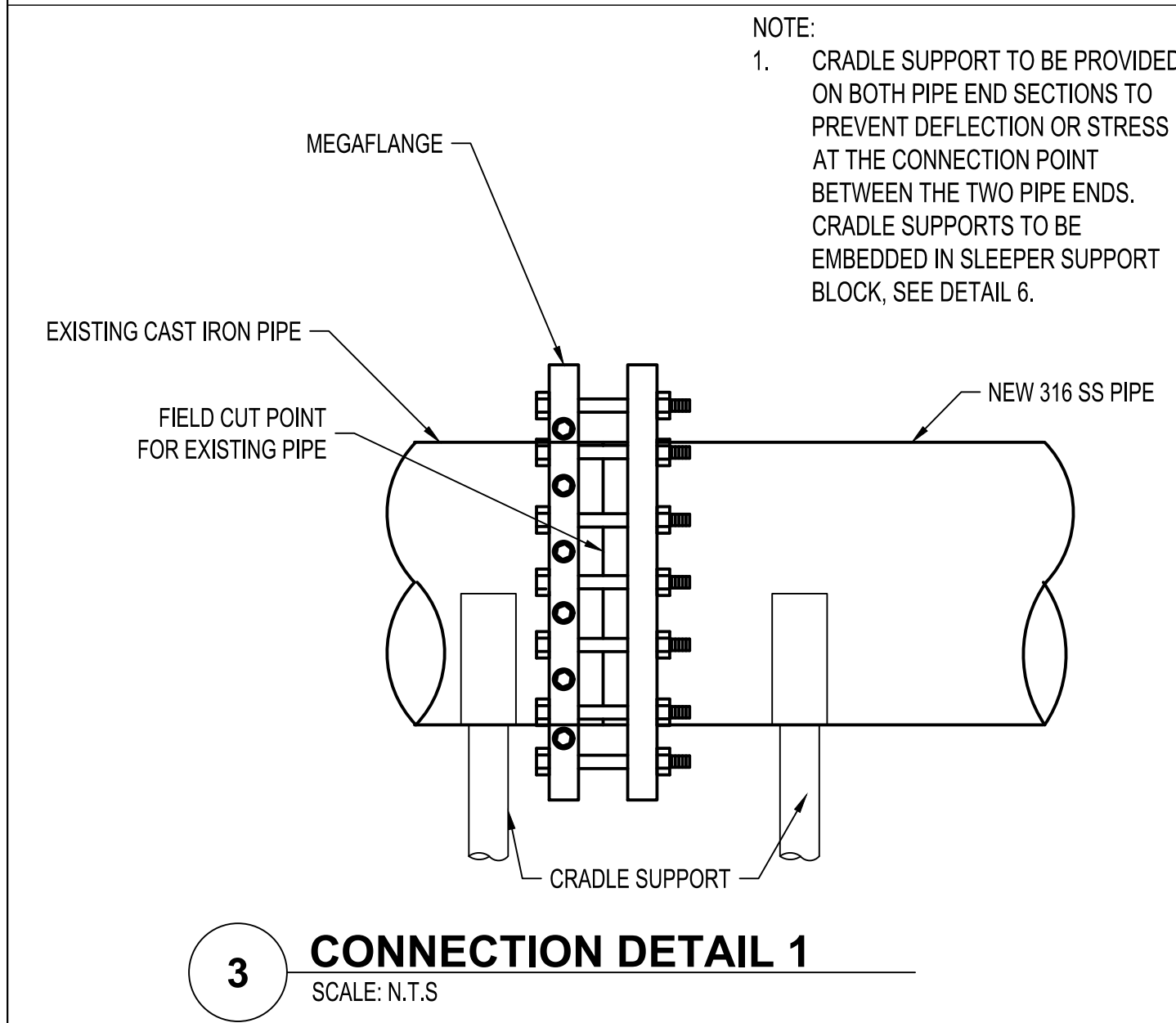
- GENERAL NOTES:**
- PIPE MATERIAL TO BE USED SHALL BE SCH40 316 STAINLESS STEEL. ALL CONNECTIONS SHALL BE FLANGED.
 - STRUCTURAL CALCULATIONS FOR PIER DESIGN ARE BASED ON WIND AND STRUCTURAL LOADS. SCOUR CALCULATIONS WERE NOT CONDUCTED FOR THIS PROJECT.
 - PIPING TO BE PURCHASED IN MINIMUM 30' PIPE LENGTHS SUCH THAT PIPE SEAMS CLOSELY ALIGN WITH PIER LOCATIONS.
 - COMPACTED NATIVE SOILS TO BE SCARIFIED TO A MINIMUM DEPTH OF TWELVE INCHES, CONDITIONED TO NEAR OPTIMUM MOISTURE CONTENT, AND COMPACTED TO AT LEAST 95% OF THE MAXIMUM DRY DENSITY. SEE GEOTECHNICAL REPORT FOR FURTHER DETAILS ON SOILS AND FOUNDATION REQUIREMENTS.
 - REFER TO DETAIL 3 OR DETAIL 4 ON THIS SHEET FOR CONNECTIONS AT STA 11+84.56 AND STA 10+00.

- SEQUENCING:**
- BYPASSING AT UPSTREAM AND DOWNSTREAM MANHOLES TO BE COMPLETED DURING CONSTRUCTION BY NECA. DOWN TIME OF PIPELINE TO BE KEPT TO A MINIMUM TO REDUCE DISRUPTION OF SERVICE TO LOCAL CUSTOMERS.
 - INSTALLATION OF NEW PIERS TO OCCUR PRIOR TO PIPELINE SECTION REPLACEMENT. WHERE NECESSARY FOR NEW PIER INSTALLATION, TEMPORARY SHORING OF THE PIPELINE MAY BE IMPLEMENTED TO ALLOW FOR REMOVAL OF EXISTING PIERS.

ENGINEER'S SEAL

100% FOR REVIEW ONLY

April 7, 2022



Bohannon & Huston www.bhinc.com 800.877.5332		NAVAJO ENGINEERING AND CONSTRUCTION AUTHORITY FORT DEFIANCE SEWER LINE ARROYO CROSSING REHABILITATION PLAN AND PROFILE DETAILS	
BHI PROJECT NO.	20220396	DWG NO.	C-01
SHEET	1	OF	1