

**DRAWING INDEX**

- SHEET 1: SPECIFICATIONS AND CONDITIONS
- SHEET 2: FLOOR PLAN, PLUMBING LEGEND, STRUCTURAL LEGEND, WINDOW AND DOOR SCHEDULE, AND PLUMBING SCHEMATICS
- SHEET 3: ELECTRICAL PLAN, ELECTRICAL LEGEND, ELECTRICAL PANEL LEGEND
- SHEET 4: REFLECTED CEILING PLAN, HVAC PLAN, HVAC LEGEND
- SHEET 5: BUILDING CROSS-SECTION, MISC. DETAILS
- SHEET 6: ELEVATIONS

DEALER:  
**DESIGN MODULARS**  
 PROJECT:  
**TUBA CITY PHYSICIAN BUILDING**  
**36' X 60'**  
**PMI-5338-3660**

**STATE REQUIRED INFORMATION ON USE AND LOCATION OF FACTORY-BUILT BUILDING**

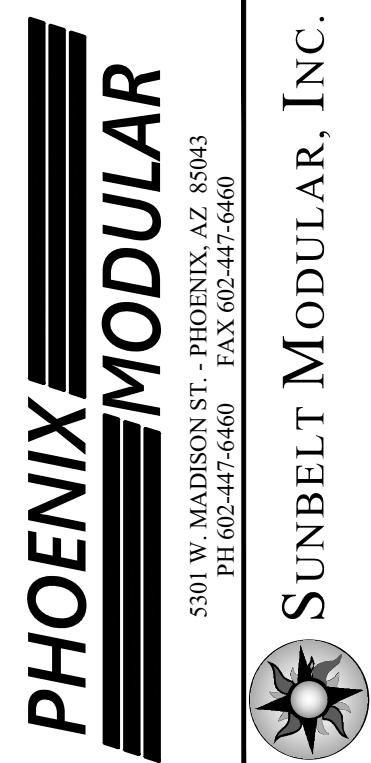
- |  |   |
|--|---|
| 1. PROPOSED ADDRESS AND/OR LOCATION OF UNIT: | 167 MAIN STREET<br>TUBA CITY, AZ, 86045               |
| 2. EXPLANATION OF BUILDING USE:              | OFFICE  |
| 3. SET TYPE                                  | PAD/PIER ABOVE GRADE<br>ASSUMED F.F. TO BE 36" A.F.G. |

**MANUFACTURER:**

MANUFACTURER & ADDRESS PHOENIX MODULAR  
 5301 W. MADISON ST.  
 PHOENIX, AZ, 85043  
 PHOENIXMODULAR.COM  
(SEE WEBSITE FOR WARRANTY INFORMATION)

**DESIGN CRITERIA / LOADS:**

NO OF MODULES:	3
BUILDING SQ.FT.	2130
TYPE OF CONSTRUCTION:	VB
OCCUPANCY USE GROUP:	B
OCCUPANCY LOAD:	33
FLOOR LIVE LOAD:	50 psf. (2000 lb concentrated) (100 psf. @ corridor)
ROOF LIVE LOAD:	20 psf.
ROOF DEAD LOAD:	12 psf.
ROOF SNOW LOAD:	40 psf.
WIND LOAD:	2018 IBC - 115 MPH, EXP. C
OCCUPANCY/RISK CATG.	II
SEISMIC	Ss=0.4, S1=0.12 Site Class 'D' Design Category 'C'
PERMISSIBLE GAS TYPE:	N/A
CLIMATE ZONE:	5B
NAME AND DATE OF CODES:	AZ: 2018 IBC, 2018 IPC, 2018 IMC, 2017 NEC, 2018 IECC, AND ICC A117.1-2009



THESE DRAWINGS REMAIN THE PROPERTY OF PHOENIX MODULAR AND ARE NOT TO BE USED IN ANYWAY WITHOUT WRITTEN PERMISSION.

**DEALER:**  
DESIGN MODULARS

**PROJECT:**  
TUBA CITY PHYSICIAN BUILDING

**MODEL NUMBER:**  
----

**STATES:**  
AZ

**SERIAL NUMBERS:**  
PMI-5338-3660

**DRAWN BY:**  
CK/MM

**PLOT DATE:**  
2/11/2022

**REV # / DATE:**  
----

R. MARK STEELE, P.E.  
 CORPORATE ENGINEER  
 SUNBELT MODULAR, INC  
 5301 W. MADISON ST.  
 PHOENIX, AZ. 85043  
 (602) 327-4769

**FRAME / CHASSIS:**

Frame Type: Basement (CH2)  
 Quantity: (3) EA  
 Size: 11'-10" X 60'-0"  
 Type: Outrigger @ 48" O.C.  
 Crossmember @ 96" O.C.  
 Module line Clips @ 96" O.C.  
 Main Rails @ 99 1/2" O.C.  
 Beam Size: 12" Jr. I-beam  
 Axles:  
 Module 1: Qty: Quad 6000# rated with (All) brake  
 Offset: 4" (Toward sidewall / See detail 5/5)  
 Modules 2,3: Qty: Quad 6000# rated with (All) brake  
 Offset: None  
 Hitch: Detachable with Standard Hitch  
 Tires: 8x14.5 14 ply rated

Additional Frame / Chassis Items Included in Quoted Price:

Item 1: None

**FLOOR CONSTRUCTION:**

Floor Joist: 2X8 #2 HF equal or better  
 Joist Length: 135-7/8"  
 Joist Spacing: 16" O.C.  
 Floor: Single layer 3/4" T&G Plywood.  
 Insulation: R-30 unfaced fiberglass batt (2-layer of R-15)  
 Bottom: Reinforced Plastic

Additional Floor Items Included in Quoted Price:

Item 1: None

**EXTERIOR WALL CONSTRUCTION:**

Framing: Stud: 2X6 #2 HF equal or better @ 16" O.C.  
 Top Plate: Double 2X6 #2 HF equal or better  
 Bottom Plate: Single 2X6 #2 HF or better  
 Header: (3) 2x4 header with (2) 1/2" shim at all exterior openings (UNO)  
 Insulation: R-21 Kraft back fiberglass batt  
 Siding Type: 3/8" LP Smart-panel vertical siding (8" grooves) with barricade wrap underlayment.  
 Sidewall Height: See cross section for heights

Additional Exterior Wall Items Included in Quoted Price:

Item 1: None

**INTERIOR WALL CONSTRUCTION:**

Framing: Stud: 2X4 #2 HF equal or better @ 16" O.C.  
 Top plate: Single 2X4 #2 HF equal or better (Double as needed)  
 Bottom plate: Single 2X4 #2 HF or better bottom plate  
 Stud length: 92-5/8" (Ceiling Ht.)  
 Insulation: NONE PROVIDED

Additional Interior Wall Items Included in Quoted Price:

Item 1: None

**ROOF CONSTRUCTION:**

Roof Type: Complex  
 Roof Slope: 1/4 in 12  
 Rafter size: 2X10 #2 HF equal or better  
 (Roof diaphragm chord strap "ST2215" at rafters installed on-site, see 4/5)  
 Rafter Length: Mod 1,3: 135 1/8"  
 Mod 2: 131 1/4"  
 Spacing: 24". O.C. (Sheathing clips required)  
 Mate Beam: Steel clearspan web truss with (wood) columns at each end  
 Height: 22 1/2" to 30" to 22 1/2"  
 Length: 60'  
 No. of Beams: 6  
 Insulation: R-38C unfaced fiberglass batt with support netting  
 Sheathing: 5/8" 24/0 Sheathing  
 Roofing: 45 mil single ply EPDM over 1/2" Gypsum  
 Color: White

Additional Roof Items Included in Quoted Price:

Item 1: LUS28 joist hangars @ Modlines Only

**FINISHES:**

**FLOOR COVERING:**  
 Type 1: 1/8" V.C.T. Tile to be 50% OFFSET.  
 Hold back tile (5 1/2") at each side of the matelines.  
 Location: (Throughout)  
 Color to be: ( )

**BASE:**  
 Cove Base 1: 4" Vinyl cove.  
 Location: (Throughout)  
 Color to be: ( )

**WALLS:**  
 Covering 1: 1/2" vinyl covered gypsum  
 Location: (Throughout)  
 Covering height: 8'  
 Color to be: ( ).  
 Covering 2: Standard FRP panels (per code)  
 Location: (Restrooms and mop sink)  
 Covering height: 4'  
 Color: (White)

**TRIM:**  
 Wall Trim 1: Vinyl Covered trim  
 Color to be: (To match VCG)

**CEILING:**  
 Type 1: 2'x4' T-Grid  
 (Armstrong Tile #769A or Equal)  
 Height: 7'-10"

Installed at factory, held back at module lines.  
 Completion of ceiling installation on-site by others; not in PMI's scope.

**EXTERIOR**  
 Siding body: Color: ( ) 8' sheets  
 Hood: Color: ( )  
 Corner trim: Color: ( )  
 Door & window trim: Color: ( )  
 Bottom horizontal trim: Color: ( )  
 Intermediate horizontal trim: Color: ( ) separates hood & body  
 Top horizontal trim: Color: ( )  
 Module line trim: Color: (Match hood above intermediate horizontal trim & match body below)  
 All paint to be: Satin Finish (Glidden)

**EXTERIOR/INTERIOR DOORS:** (SEE DOOR SCHEDULE)

**WINDOWS:** (SEE WINDOW SCHEDULE)

**CLOSEUP:**  
 Type: Medium  
 Notes: Module WILL exceed 12'-0" (Including door hardware)

**APPLIANCES:**

None provided

**ACCESSORIES:**

Base Cabinets: 5 L.F.  
 Color: Pre-Finish (Maple Rye)  
 Counters: 5 LF of 25-1/2" wide Laminate Countertop  
 Backsplash: 4"  
 Edge Type: Rolled  
 Color: (TBD)

**SPECIAL CONDITIONS AND OR LIMITATIONS:**

SPRINKLERS REQUIRED. NO

**RED TAG:**

NONE

**NOT INCLUDED IN SCOPE OF WORK:**

1. PORCHES, STEPS, AND RAMPS TO BE SUPPLIED AND INSTALLED BY OTHERS IN ACCORDANCE WITH THE LOCAL BUILDING DEPARTMENT
2. PORTABLE FIRE EXTINGUISHERS TO BE SUPPLIED AND INSTALLED ON SITE BY OWNER IN ACCORDANCE WITH LOCAL BUILDING DEPARTMENT
3. ACCESSIBLE DRINKING FOUNTAIN TO BE PROVIDED ON SITE BY OWNER LOCATED WITHIN 500 FEET ON AN ACCESSIBLE ROUTE
4. ADDITIONAL HANDICAP TOILET FACILITIES PROVIDED IN ADJACENT BUILDING ON THE SAME PROPERTY LOCATED WITHIN 500 FEET ON AN ACCESSIBLE ROUTE
5. ANY REQUIRED FIRE/SMOKE DETECTION AND/OR SUPPRESSION TO BE INSTALLED BY OTHERS ON SITE IN ACCORDANCE WITH THE LOCAL BUILDING DEPARTMENT
6. THE BUILDING OWNER IS RESPONSIBLE FOR THE DEVELOPMENT & DESIGN OF ALL SITE REQUIRED ACCESSIBILITY ELEMENTS. THESE ELEMENTS ARE NOT INCLUDED IN THE SCOPE OF THIS DESIGN. SUBMITTALS ARE REQUIRED BY OWNER THROUGH THEIR DESIGN PROFESSIONAL

**IDENTIFICATION:**

DATA PLATE AND STATE DECAL TO BE LOCATED ON LOWER RIGHT HAND CORNER OF THE ENDWALL OPPOSITE THE HITCH END OF THE MODULE.

**NOTES:**

1. SITE PLAN NOT AVAILABLE AT THIS TIME. BUILDING DESIGNED TO HAVE FIRE SEPARATION DISTANCE GREATER THAN 10 FT. TO PROPERTY LINES AS PER LOCAL BUILDING DEPARTMENT REQUIREMENTS.
2. THIS PLAN MAY BE REVERSED AND/OR MIRRORRED.
3. SEE STRUCTURAL PACKAGE FOR ALL STRUCTURAL STANDARDS AND DETAILS. APPROVAL # F8073-2

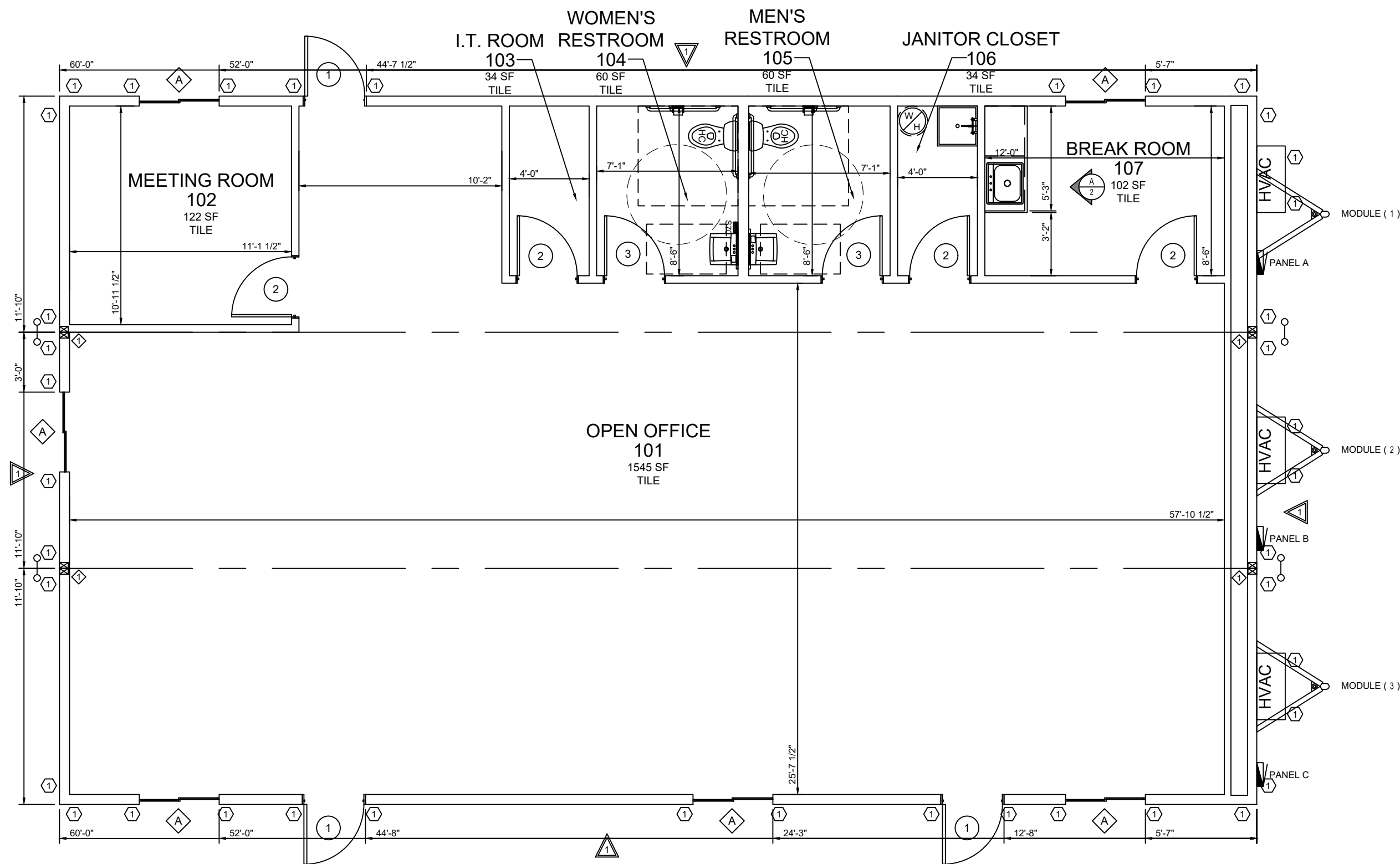
- APPROVED
- APPROVED EXCEPT AS NOTED
- REVISE AND RESUBMIT

BY: \_\_\_\_\_ DATE: \_\_\_\_\_

"PLEASE REVIEW DRAWINGS AND SPECIFICATIONS CAREFULLY. WHILE EVERY EFFORT IS MADE TO ASSURE THE DRAWINGS REFLECT THE EXPECTATIONS AND QUOTATION, THE FINAL CONSTRUCTION WILL BE BASED SOLELY ON THE SPECIFICATIONS AND DRAWINGS APPROVED."

**SHEET:**

1  
OF  
6



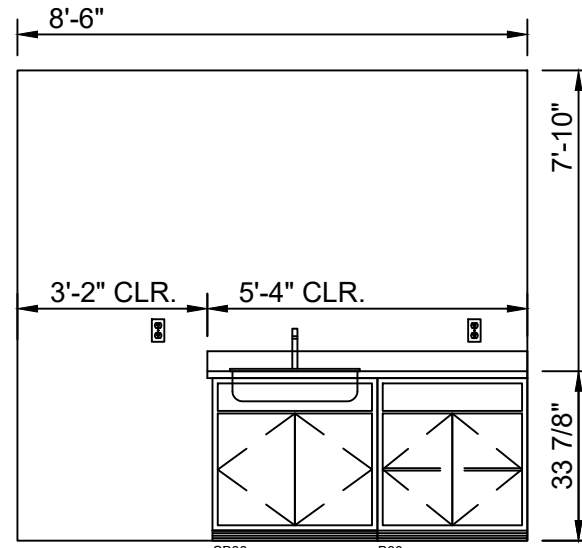
**STRUCTURAL LEGEND**

"ALL INTERIOR DIMENSIONS ARE FROM FINISH TO FINISH & ALL EXTERIOR DIMENSIONS ARE FROM STUD TO STUD"

Symbol	Description	Qty
(Symbol)	SHEARWALL TAG (SEE STRUCTURAL PACKAGE FOR DESCRIPTION. SEE SHEET 24)	TYP @ 4 LOCATIONS
(Symbol)	HOLD DOWN TAG (SEE STRUCTURAL PACKAGE FOR DESCRIPTION. SEE SHEET 24)	TYP @ 44 LOCATIONS
(Symbol)	DIAPHRAGM CHORD TIE SIMPSON ST21219 (SEE DETAIL 4.5)	TYP @ 4 LOCATIONS
(Symbol)	(1) 3/8" x 25" LVL 2 @ E GRADE ON EACH SIDE OF MID-LINE (TYP #3) HOLD-DOWN STRAP @ BOTTOM & BOLTED @ TOP	TYP @ 4 LOCATIONS

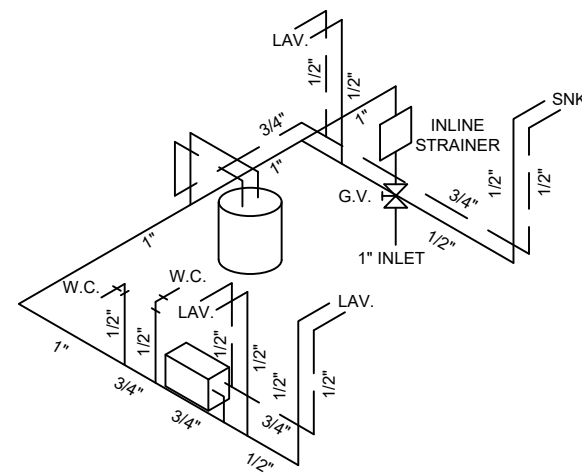
**PLUMBING:**

Symbol	Type	Qty	Note	Description
(Symbol)	Water Closet	2		Floor mtd. ADA elongated tank type with shut off valve / flush handle to be on open side of r.r. (Factory standard)
(Symbol)	Grab Bars	2		Set(s) with (1) each 42", 36" horizontal, and 18" vertical
(Symbol)	Paper Holder	2		Single roll wall mount toilet paper holder mtd. ADA height (Factory standard)
(Symbol)	Lavatory	2		19" X 17" White vitreous wall hung with ADA handles and shut off valves. (Factory standard)
(Symbol)	Sink	1		25" X 22" Stainless steel single bowl sink with single faucet, ADA handle, and shut off valves (Factory standard)
(Symbol)	Sink	1		24x24 Floor mounted mop sink with wall mounted faucet (Factory standard)
(Symbol)	Mirror	2		24"x36" w/ clips mtd. 38" to bottom edge (Factory standard)
(Symbol)	Water Heater	1	Chronomite: S70WMD240V or equal	Insta-Hot Chronomite S-70 (Electric - 240V)
(Symbol)	Water Heater	1	6 Gallon w/ seismic straps	120v Electric with relief valve, water tight drain pan (3/4" drain), and pipe insulated first 8' (non-simultaneous operation) (Factory standard)
(Symbol)	In-line Strainer	1	1"	Strainer at supply entrance
(Symbol)	Supply	1	Copper Inlet	Type M copper or Pex
(Symbol)	DWV System	1		ABS Schedule 40 (Manifold is by others)
(Symbol)	R.R. Sign	1	Door Mtd	Women's ADA restroom sign w/ braille mtd. 59" a.f.f. to center
(Symbol)	R.R. Sign	1	Door Mtd	Men's ADA restroom sign w/ braille mtd. 59" a.f.f. to center



**A CABINET ELEVATION**  
N.T.S.

**1 FLOOR PLAN**  
3/16"=1'-0" SQUARE FOOTAGE - 2130 S.F.  
OCCUPANCY LOAD = 33



DESCRIPTION	QTY	FIXTURE UNITS
WATER CLOSET	2	5
LAVATORY	2	2
SINK	1	3
MOP SINK	1	3
TOTAL FIXTURE UNITS: 20 = 1" INLET		

**COLD & HOT SCHEMATIC**

SYM	DESCRIPTION
(Symbol)	COLD WATER LINE
(Symbol)	HOT WATER LINE

1. MAX PRESSURE RANGE @ CONNECTION: 30-39 (IPC)  
2. MAX DEVELOPED LENGTH: 100'

NOTE:  
A. PEX HOT / COLD WATER SUPPLY MAY BE INSTALLED ABOVE CEILING.

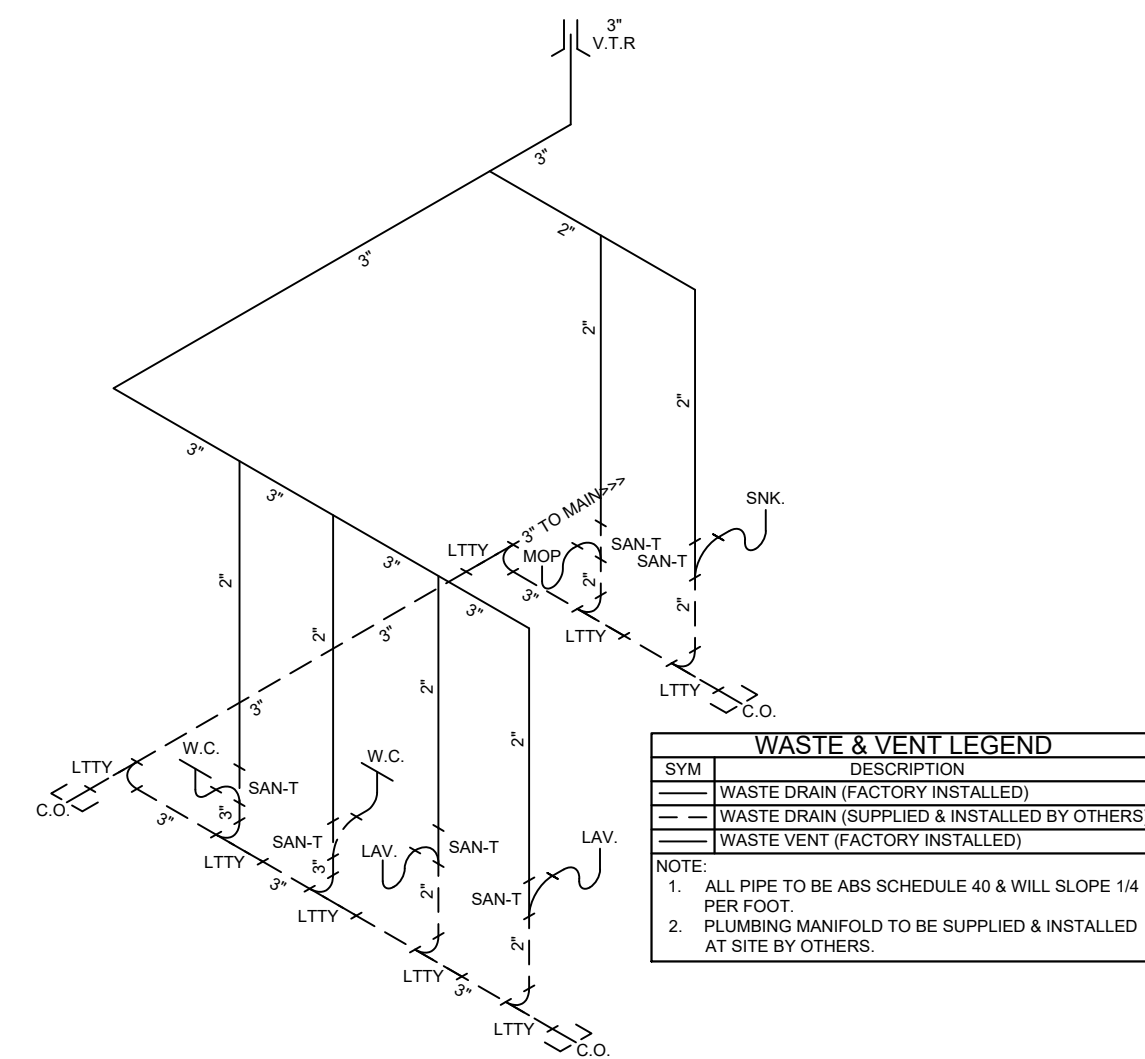
**3 HOT / COLD SUPPLY**  
N.T.S.

**WINDOWS:**

Qty	NO.	Type	Glazing	Size	Rough Opening	U-Factor	SHGC	Mini-Blind	Notes
6	A	WHITE VINYL HORIZONTAL SLIDER	CLEAR, DUAL GLAZED, LOW-E	410X310	48" x 36"	0.31	0.22	NONE	HEADER AT 81" AFF

**DOORS:**

Qty	NO.	Type	Jamb	Wall Thickness	Glazing	Size	Rough Opening	U-Factor	Color	Closer	Deadbolt	Hardware	Fire Rating	Keying	Notes
3	1	STEEL, INSULATED 18 GA.	TELL 16 GA. BRONZE	6 3/8"	NONE	310X68	38" x 81"	0.31	T.B.D. (SAME BOTH SIDES)	HYDRAULIC	SINGLE CYLINDER TELL GRADE 2	PASSAGE LEVER, TELL GRADE 2	NONE	ALIKE	DRIP CAP. (2) STD & (1) NRP HINGES, WEATHERSTRIPPING, THRESHOLD, DOOR SWEEP
4	2	PREFINISHED WOOD HOLLOW CORE	TIMELY METAL JAMB BROWNTONE	4 1/2"	NONE	310X68	37 1/2" x 80 3/4"	N/A	LEGACY OAK	NONE	NONE	PASSAGE LEVER, TELL GRADE 3	NONE	N/A	HINGES & WALL MOUNT STOPS
2	3	PREFINISHED WOOD HOLLOW CORE	TIMELY METAL JAMB BROWNTONE	4 1/2"	NONE	310X68	37 1/2" x 80 3/4"	N/A	LEGACY OAK	NONE	NONE	PRIVACY LEVER, TELL GRADE 3	NONE	N/A	HINGES & WALL MOUNT STOPS



**WASTE & VENT LEGEND**

SYM	DESCRIPTION
(Symbol)	WASTE DRAIN (FACTORY INSTALLED)
(Symbol)	WASTE DRAIN (SUPPLIED & INSTALLED BY OTHERS)
(Symbol)	WASTE VENT (FACTORY INSTALLED)

NOTE:  
1. ALL PIPE TO BE ABS SCHEDULE 40 & WILL SLOPE 1/4 PER FOOT.  
2. PLUMBING MANIFOLD TO BE SUPPLIED & INSTALLED AT SITE BY OTHERS.

**4 D.W.V.**  
N.T.S.

THESE DRAWINGS REMAIN THE PROPERTY OF PHOENIX MODULAR AND ARE NOT TO BE USED IN ANYWAY WITHOUT WRITTEN PERMISSION.

**DEALER:**  
DESIGN MODULARS

**PROJECT:**  
TUBA CITY PHYSICIAN BUILDING

**MODEL NUMBER:**  
----

**STATES:**  
AZ

**SERIAL NUMBERS:**  
PMI-5338-3660

**DRAWN BY:**  
CK/MM

**PLOT DATE:**  
2/11/2022

**REV # / DATE:**  
----

R. MARK STEELE, P.E.  
CORPORATE ENGINEER  
SUNBELT MODULAR, INC  
5301 W. MADISON ST.  
PHOENIX, AZ. 85043  
(602) 327-4769

THESE DRAWINGS REMAIN THE PROPERTY OF PHOENIX MODULAR AND ARE NOT TO BE USED IN ANYWAY WITHOUT WRITTEN PERMISSION.

DEALER:  
 DESIGN MODULARS

PROJECT:  
 TUBA CITY PHYSICIAN BUILDING

MODEL NUMBER:  
 ----

STATES:  
 AZ

SERIAL NUMBERS:  
 PMI-5338-3660

DRAWN BY:  
 CK/MM

PLOT DATE:  
 2/11/2022

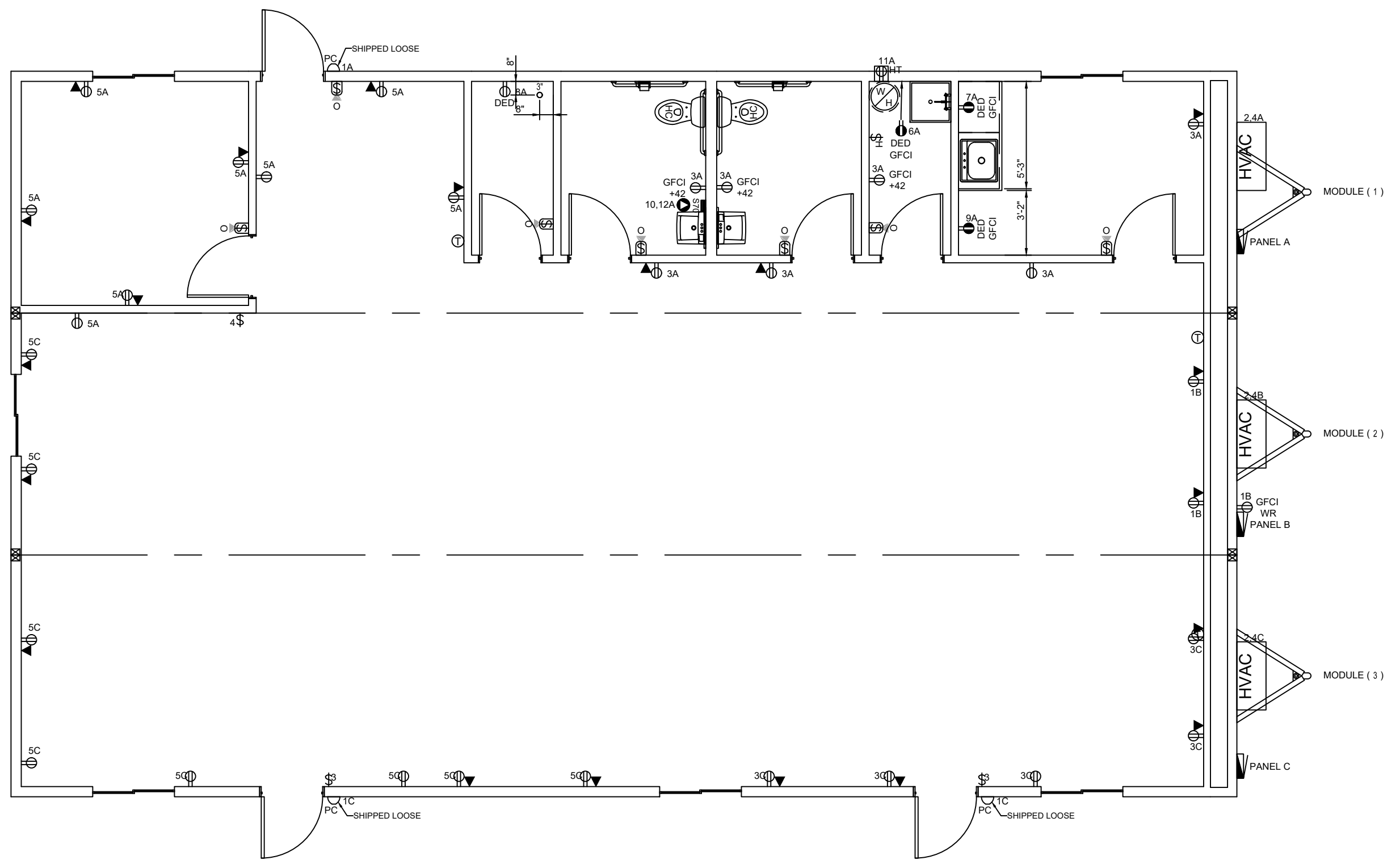
REV # / DATE:  
 ----  
 ----  
 ----  
 ----  
 ----  
 ----  
 ----  
 ----

R. MARK STEELE, P.E.  
 CORPORATE ENGINEER  
 SUNBELT MODULAR, INC  
 5301 W. MADISON ST.  
 PHOENIX, AZ. 85043  
 (602) 327-4769

SHEET:  
**3**  
 OF  
**6**

ELECTRICAL:				
Symbol	Type	Qty	Note	Description
	Elec Service	1		120/240V 60 HZ. single phase
	Elec Raceway	1		MC Cable/flex
	Elec Panel	3	12-Space	120/240v 1 PH 125 amp panel w/ 125 amp main breaker. Exterior NEMA 3R mounted 36" a.f.f. to top (Factory standard)
4K	Lights	21	4000 Lumen	2"x4" Flat panel LED recessed lay-in with dimmable electronic ballast (Factory standard)
PC	Lights	3	Westgate: LSW-30CW-PC or equal	30W LED porch light with photocell mtd. 82" a.f.f. Shipped-Loose
	Lights	4	Topaz: F-FM1115/RN/ P/30/WH or equal	15W Surface mounted 1100 lumen LED light
\$3	Switch	2		15a/120v 3-Way wall mtd. single toggle w/ cover plate mtd. 46" a.f.f. (Factory standard)
\$4	Switch	1		15a/120v 4-Way wall mtd. single toggle w/ cover plate mtd. 46" a.f.f. (Factory standard)
	Switch	7	Wattstopper: IOS-DOV or equal	20a/120v Wall mtd. occupancy / vacancy sensor w/ cover plate mtd. 46" a.f.f.
\$HT	Switch / Recep	1	Red Cover	20a/120v Single toggle switched to 20a/120v GFCI protected "WR" rated weatherproof heat tape receptacle mtd. below floor / switch mtd. 46" a.f.f. (Factory standard)
OCC	Occupancy Sensor	2	Sensor: CI-205 / Power pack: BZ-150 or equal	Ceiling mounted occupancy sensor w/ power pack
	Receptacle	27		20a/120v Duplex w/ cover plate mtd. 18" a.f.f. (Factory standard)
GFCI	Receptacle	3		20a/120v GFCI protected w/ cover plate mtd. 42" a.f.f. (Factory standard)
GFCI WR	Receptacle	1		20a/120v GFCI "WR" rated exterior receptacle with weatherproof in-use cover mtd. 18" a.f.f. (Factory standard)
DED	Receptacle	1		20a/120v Dedicated Duplex w/ cover plate mtd. 18" a.f.f. (Factory standard)
DED GFCI	Receptacle	3		20a/120v Dedicated GFCI duplex w/ cover plate mtd. 42" a.f.f. (Factory standard)
J-Box	J-Box	20	3/4" Conduit stubbed above ceiling	4x4 Empty box w/ sngl. gang mud ring, and blank cover plate mtd. 18" a.f.f. for future phone/date (Factory standard)
Water Heater	Water Heater J-Box	1		35a/240v 4x4 Wred box w/ sng gang mud ring and cover plate for water heater mtd. 18" a.f.f. (Factory standard)
Exhaust Fan	Exhaust Fan	2	Broan: 671 or equal	70 CFM Ceiling mounted / vent thru wall
Misc	Misc	1	Size: 3"	ABS stubbed thru-floor. 6" above floor and 6" below bottom belly
T-Stat	T-Stat	3	White Rogers: 1F78151	Programmable T-Stat(s) mtd. 46" a.f.f.
Device Color	Device Color	1		Color to be: (WHITE) / Exterior device(s) and masonry boxes with metal cover plate as applicable

- NOTE:
- ALL A.F.F. DIMENSIONS ARE TO THE CENTER OF THE DEVICE BOX UNLESS NOTED OTHERWISE (REFER TO SCHEDULE AND PLANS FOR HEIGHTS).
  - ALL ELECTRICAL ITEMS ARE FACTORY STANDARD UNLESS NOTED OTHERWISE.
  - BLANK COVERS WILL BE PROVIDED ON J-BOXES UNLESS NOTED OTHERWISE.
  - ALL EXTERIOR ELECTRICAL DEVICES TO BE WEATHERPROOF.



**1 ELECTRICAL PLAN**  
 3/16"=1'-0"

Main Breaker: 22kAIC		125 AMP 120/240V 1 PHASE				EXTERIOR: NEMA 3R	
Branch Breakers: 10kAIC		PANEL WITH 125 AMP MAIN BREAKER					
WS	Description	Circuit	BRK	A	B	BRK	Description
12	Lights	1	20	486	6960	60	3 Ton AC Unit w/ 10KW
12	Receptacles	3	20	1440	6960	2	
12	Receptacles	5	20	1440	2500	30	6 Gal Water Heater
12	Ded. Receptacle	7	20	1800	1800	20	Ded. Receptacle
12	Ded. Receptacle	9	20	1800	3500	35	M-70 Tankless Water Heater
12	Heat Tape	11	20	600	3500	2	
				16686	16100	Total	

**ELECTRICAL CALCULATION:**  
 GENERAL LIGHTING:  
 486 LIGHTS x 125% = 608 watts  
 16 RECEPTACLES = 2880 watts  
 1 HVAC UNITS = 13920 watts  
 2 W.H. x 125% = 9500 watts  
 1 Heat Tape = 600 watts

**PANEL A**  
 TYPE OF PANEL: LOAD CENTER

27508 watts divide by 240 volts= 115 AMPS TOTAL

Main Breaker: 22kAIC		125 AMP 120/240V 1 PHASE				EXTERIOR: NEMA 3R	
Branch Breakers: 10kAIC		PANEL WITH 125 AMP MAIN BREAKER					
WS	Description	Circuit	BRK	A	B	BRK	Description
12	Receptacles	1	20	540	6960	60	3 Ton AC Unit w/ 10KW
	Space	3			6960	2	
	Space	5					Space
	Space	7					Space
	Space	9					Space
	Space	11					Space
				7500	6960	Total	

**ELECTRICAL CALCULATION:**  
 GENERAL LIGHTING:  
 3 RECEPTACLES = 540 watts  
 1 HVAC UNITS = 13920 watts

**PANEL B**  
 TYPE OF PANEL: LOAD CENTER

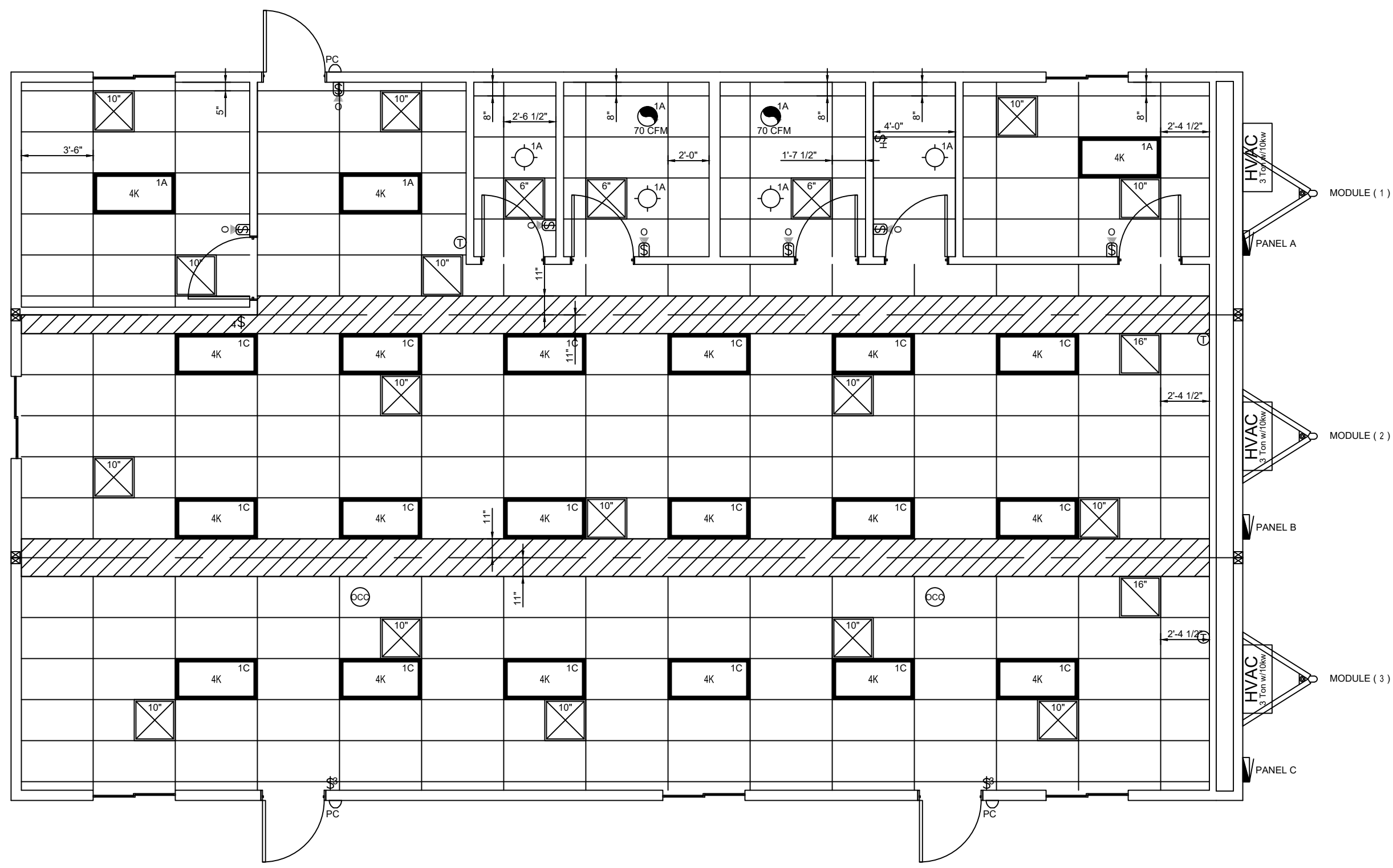
14460 watts divide by 240 volts= 60 AMPS TOTAL

Main Breaker: 22kAIC		125 AMP 120/240V 1 PHASE				EXTERIOR: NEMA 3R	
Branch Breakers: 10kAIC		PANEL WITH 125 AMP MAIN BREAKER					
WS	Description	Circuit	BRK	A	B	BRK	Description
12	Lights	1	20	960	6960	60	3 Ton AC Unit w/ 10KW
12	Receptacles	3	20	900	6960	2	
12	Receptacles	5	20	1440			Space
	Space	7					Space
	Space	9					Space
	Space	11					Space
				9360	7860	Total	

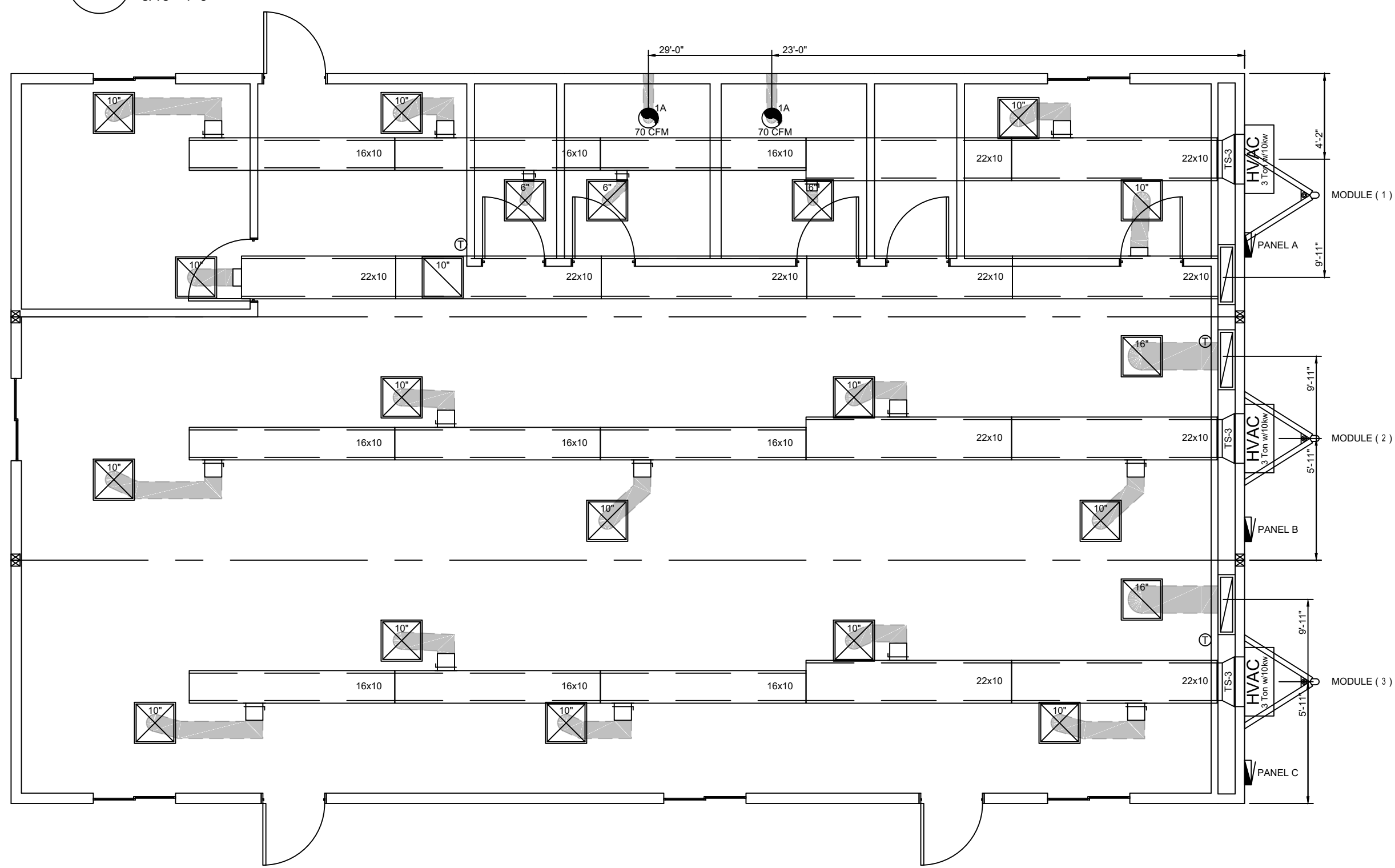
**ELECTRICAL CALCULATION:**  
 GENERAL LIGHTING:  
 960 LIGHTS x 125% = 1200 watts  
 13 RECEPTACLES = 2340 watts  
 1 HVAC UNITS = 13920 watts

**PANEL C**  
 TYPE OF PANEL: LOAD CENTER

17460 watts divide by 240 volts= 73 AMPS TOTAL



**1 REFLECTED CEILING PLAN**  
3/16"=1'-0"



**2 HVAC PLAN**  
3/16"=1'-0"

CEILING LEGEND	
	INDICATES T-GRID SUSPENDED CEILING INSTALLED @ FACTORY
	INDICATES SUSPENDED CEILING HOLD-BACK @ MATELINES, TO BE COMPLETED ON-SITE BY OTHERS

HVAC:				
Symbol	Type	Qty	Note	Description
	HVAC Unit	3	FAD	3 TON AC with 10kw heat strip 11 EER end mount unit / Model: W36AB-A10 or equal
	Duct Sleeve	3		29"x9" To 22"x10" Galvanized sleeve, 16" long
	Return Air Plenum	3		32"x7" Return air plenum w/ 28"x14"x6" tap-in
	Fiberglass Duct	9		16"x10"x10'-0" Fiberglass
	Fiberglass Duct	10		22"x10"x10'-0" Fiberglass
	Fiberglass Duct	1		22"x10"x7'-6" Fiberglass
	Supply Diffusers	3	6"	24" x 24" 4-way throw diffuser with start collar, collar w/ scoop and damper, and flex (Factory standard)
	Supply Diffusers	13	10"	24" x 24" 4-way throw diffuser with start collar, collar w/ scoop and damper, and flex (Factory standard)
	R/A Grille	2	10"	24" x 24" Perforated lay-in with start collar, collar, and flex (Factory standard)
	R/A Grille	2	16"	24" x 24" Perforated lay-in with start collar, collar, and flex (Factory standard)
	Duct type	1		R-6 Fiberglass insulation. Flex duct not to exceed 14'

**PHOENIX MODULAR**  
5301 W. MADISON ST. - PHOENIX, AZ 85043  
PH 602-447-6460 FAX 602-447-6460  
**SUNBELT MODULAR, INC.**

THESE DRAWINGS REMAIN THE PROPERTY OF PHOENIX MODULAR AND ARE NOT TO BE USED IN ANYWAY WITHOUT WRITTEN PERMISSION.

**DEALER:**  
DESIGN MODULARS

**PROJECT:**  
TUBA CITY PHYSICIAN BUILDING

**MODEL NUMBER:**  
----

**STATES:**  
AZ

**SERIAL NUMBERS:**  
PMI-5338-3660

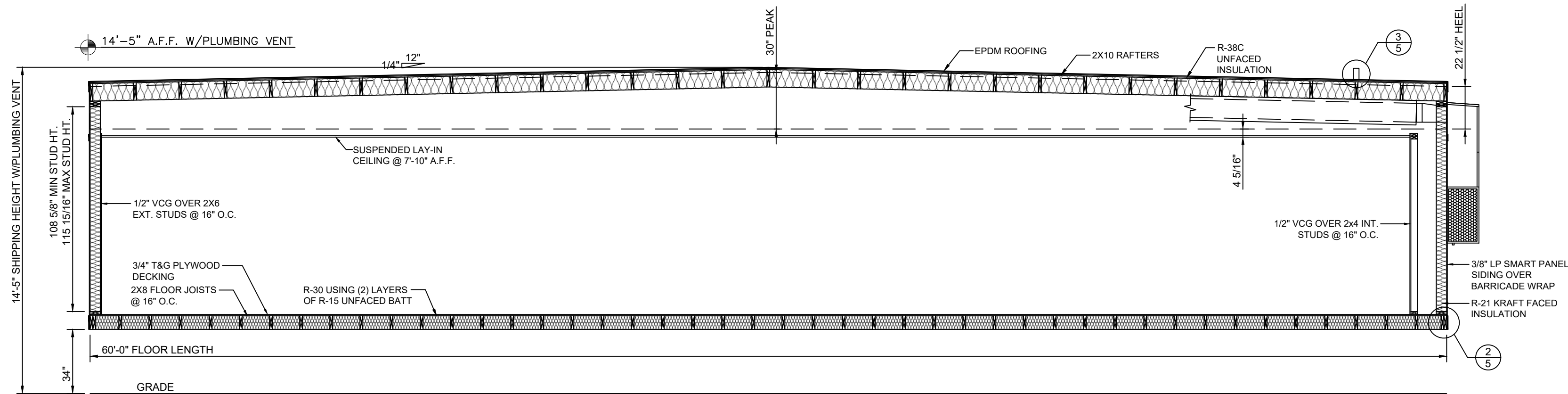
**DRAWN BY:**  
CK/MM

**PLOT DATE:**  
2/11/2022

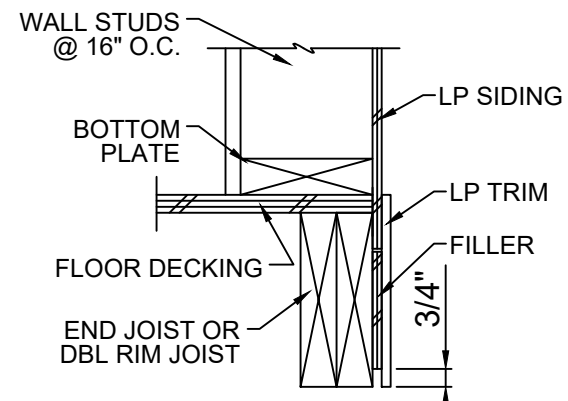
**REV # / DATE:**  
-----  
-----  
-----  
-----  
-----  
-----  
-----  
-----

R. MARK STEELE, P.E.  
CORPORATE ENGINEER  
SUNBELT MODULAR, INC  
5301 W. MADISON ST.  
PHOENIX, AZ. 85043  
(602) 327-4769

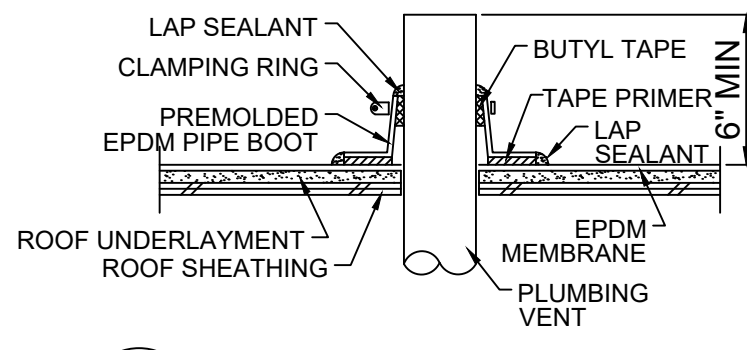
**SHEET:**  
**4**  
OF  
**6**



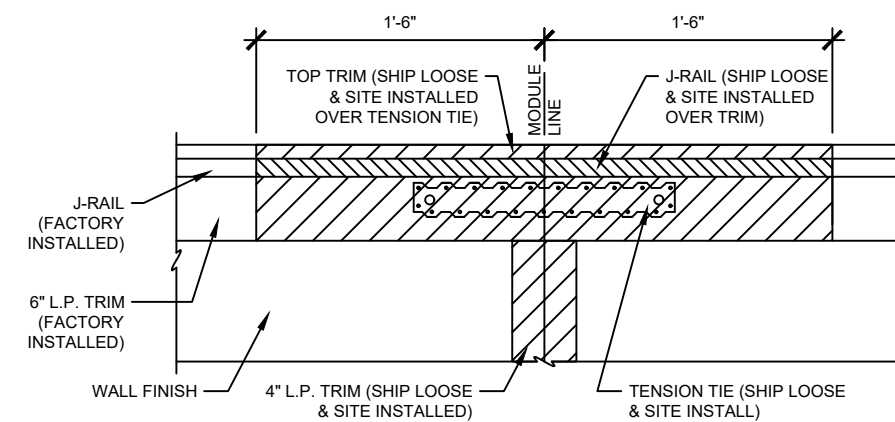
**1 BUILDING CROSS SECTION**  
1/4"=1'-0"



**2 WALL FINISH**  
N.T.S. @ FLOOR

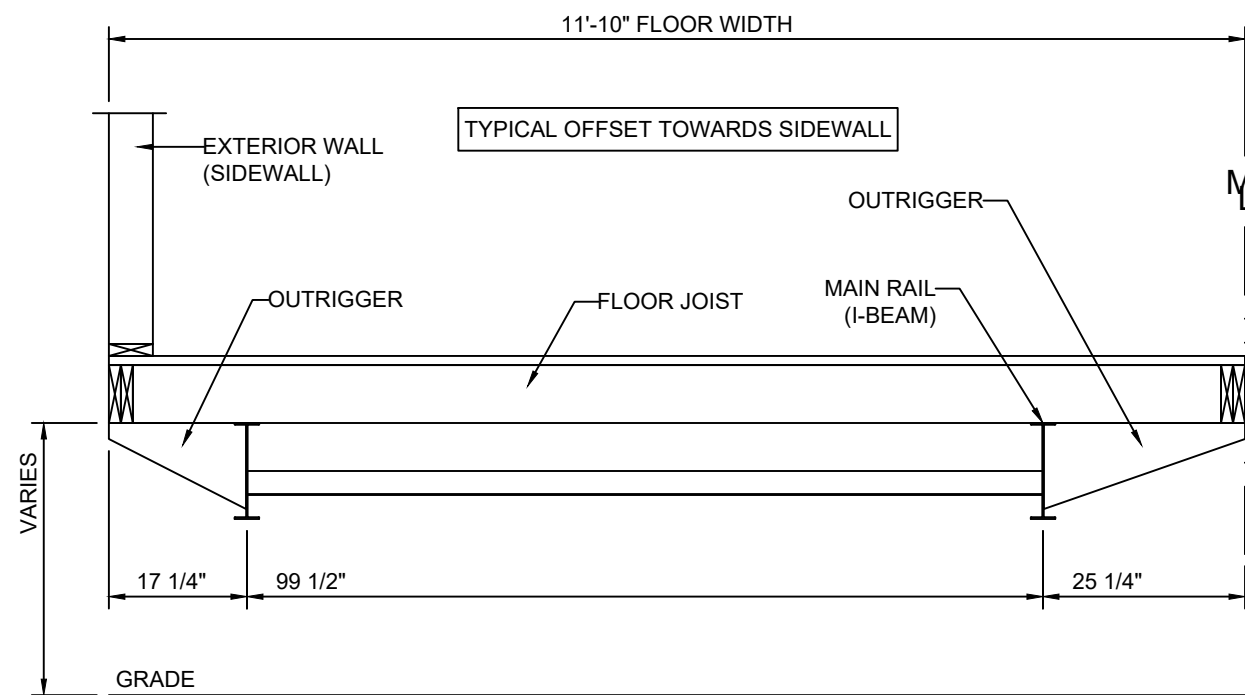


**3 PLUMBING VENT**  
N.T.S. FACTORY INSTALLED



STRAP TYPE	FASTENERS	VALUE (LBS)
SIMPSON 'ST2215'	(20) 10d NAILS (0.148"Ø x 1-1/2")	1580#

**4 ROOF DIAPHRAGM MODLINE CHORD TIE**  
N.T.S.



**5 AXLE OFFSET**  
N.T.S.

THESE DRAWINGS REMAIN THE PROPERTY OF PHOENIX MODULAR AND ARE NOT TO BE USED IN ANYWAY WITHOUT WRITTEN PERMISSION.

DEALER:  
DESIGN MODULARS

PROJECT:  
TUBA CITY PHYSICIAN BUILDING

MODEL NUMBER:  
----

STATES:  
AZ

SERIAL NUMBERS:  
PMI-5338-3660

DRAWN BY:  
CK/MM

PLOT DATE:  
2/11/2022

REV # / DATE:

- 
- 
- 
- 
- 
- 
- 
- 

R. MARK STEELE, P.E.  
CORPORATE ENGINEER  
SUNBELT MODULAR, INC  
5301 W. MADISON ST.  
PHOENIX, AZ. 85043  
(602) 327-4769

SHEET:

THESE DRAWINGS REMAIN THE PROPERTY OF PHOENIX MODULAR AND ARE NOT TO BE USED IN ANYWAY WITHOUT WRITTEN PERMISSION.

DEALER:  
 DESIGN MODULARS

PROJECT:  
 TUBA CITY PHYSICIAN BUILDING

MODEL NUMBER:  
 ----

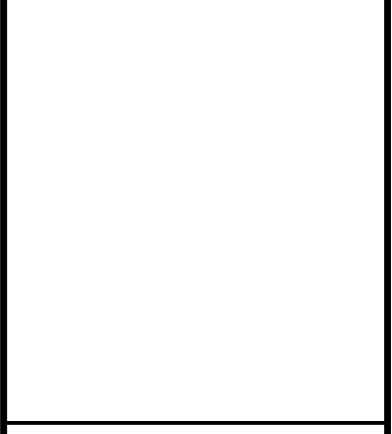
STATES:  
 AZ

SERIAL NUMBERS:  
 PMI-5338-3660

DRAWN BY:  
 CK/MM

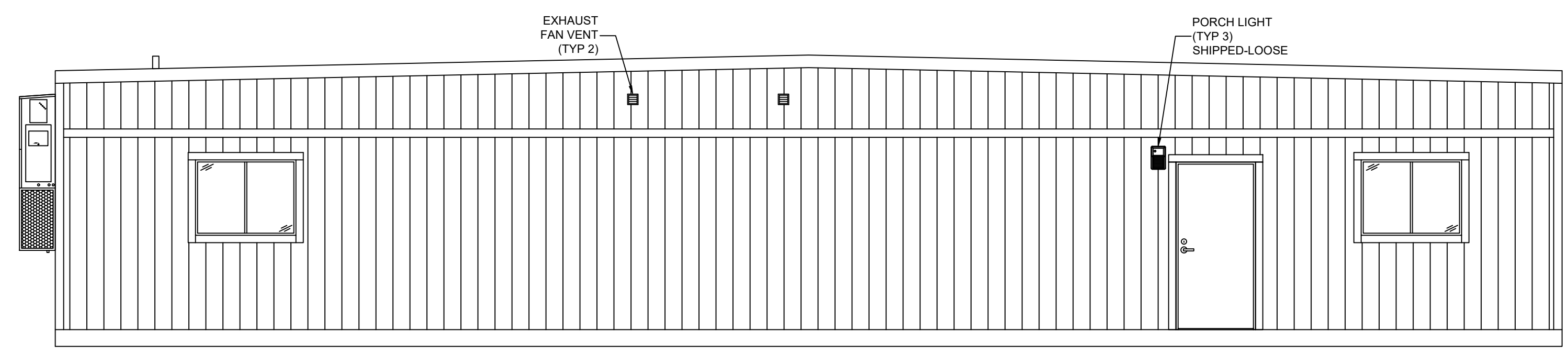
PLOT DATE:  
 2/11/2022

REV # / DATE:  
 ----  
 ----  
 ----  
 ----  
 ----  
 ----  
 ----

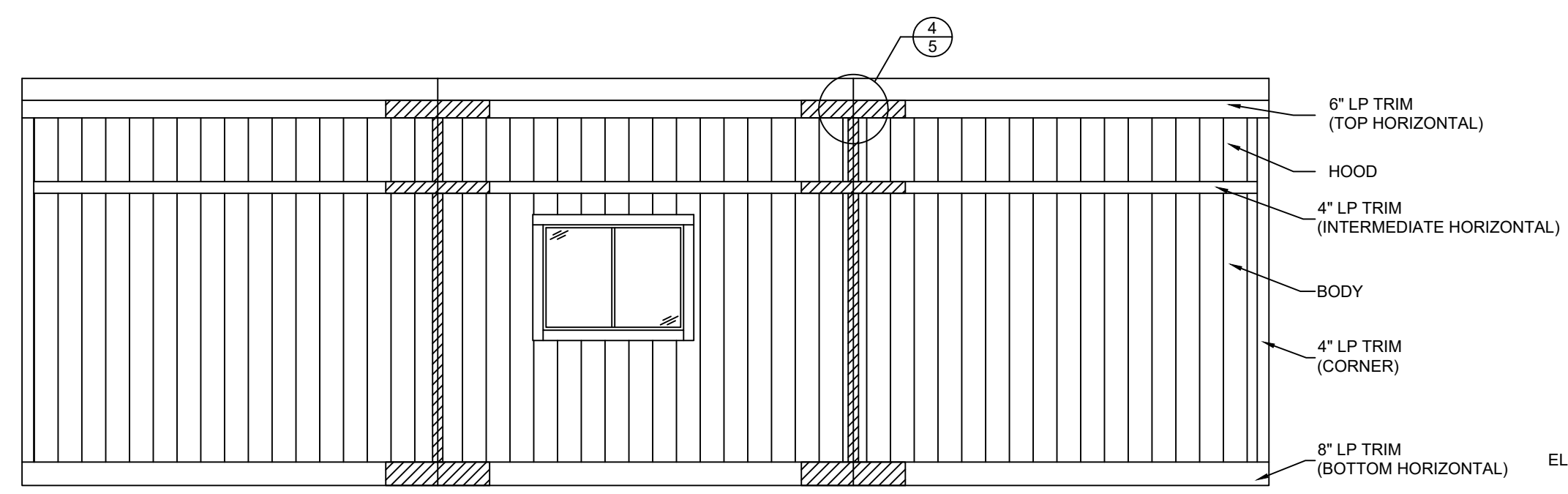


R. MARK STEELE, P.E.  
 CORPORATE ENGINEER  
 SUNBELT MODULAR, INC  
 5301 W. MADISON ST.  
 PHOENIX, AZ. 85043  
 (602) 327-4769

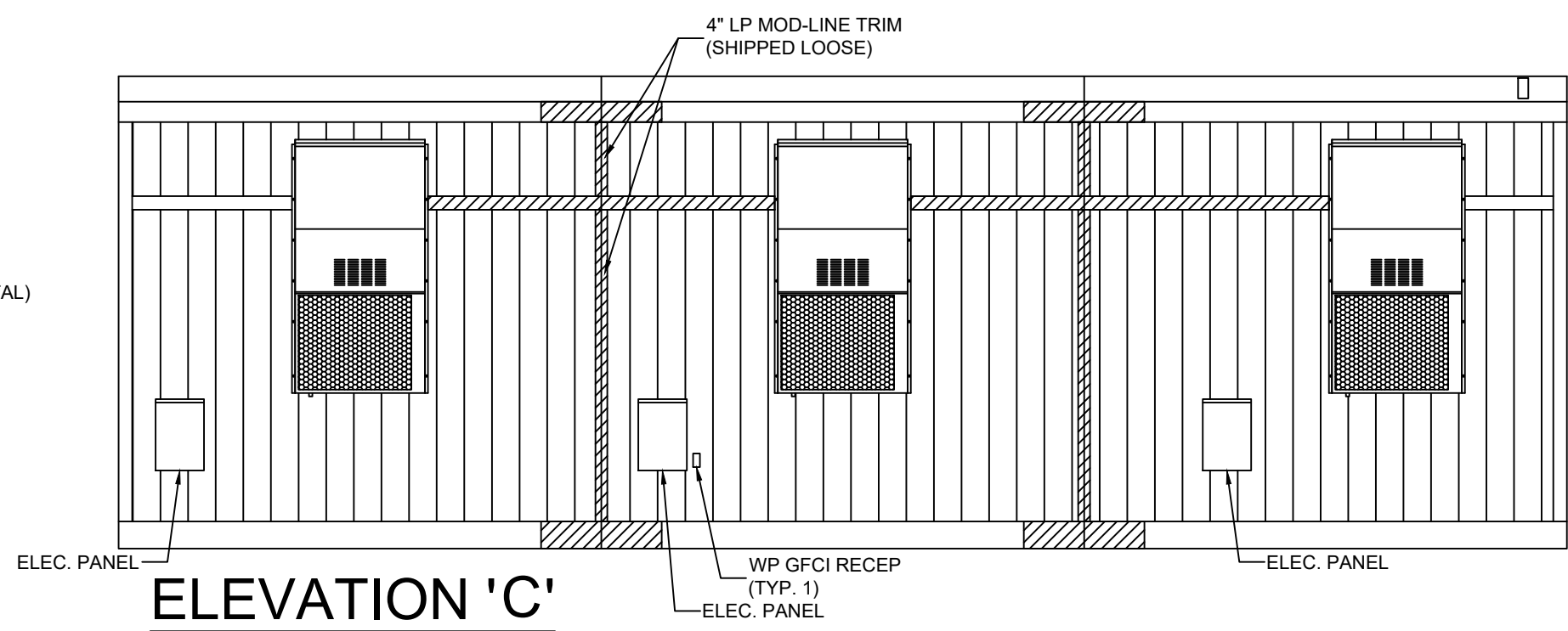
SHEET:  
**6**  
 OF  
**6**



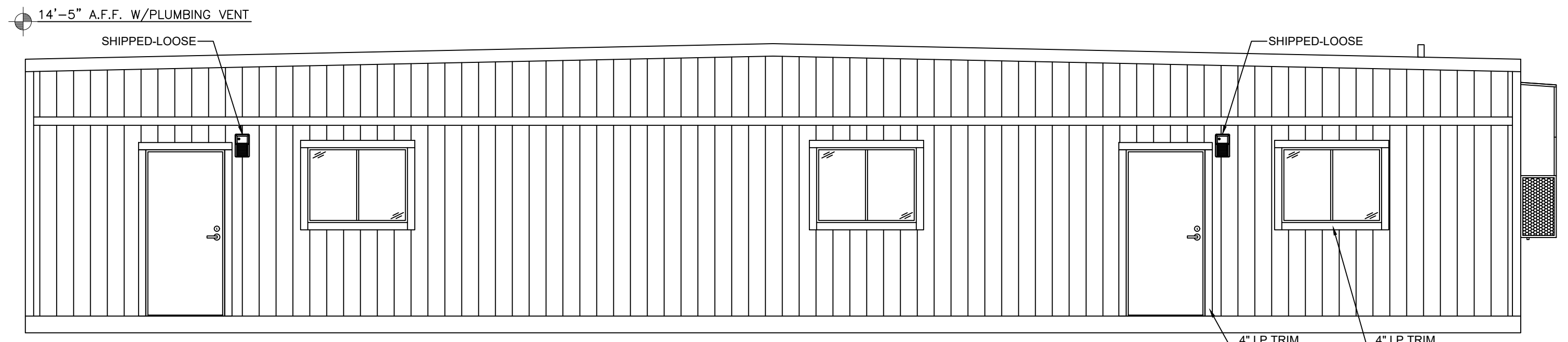
**ELEVATION 'B'**



**ELEVATION 'D'**



**ELEVATION 'C'**



**ELEVATION 'A'**

HATCHING DENOTES SHIPLOOSE TRIM