

DEALER: ARIES BUILDINGS

PROJECT: TUBA CITY OFFICES

96'X60'

PMI-5119-9660

DRAWING INDEX
SHEET 1: SPECIFICATIONS AND CONDITIONS
SHEET 2: FLOOR PLAN, PLUMBING LEGEND, STRUCTURAL LEGEND, DETAILS, WINDOW AND DOOR SCHEDULE
SHEET 3: ELECTRICAL PLAN, ELECTRICAL LEGEND, ELECTRICAL CALCS, ELECTRICAL NOTES
SHEET 4: REFLECTED CEILING PLAN
SHEET 5: HVAC PLAN, HVAC SCHEDULE
SHEET 6: BUILDING CROSS SECTION, DETAILS, PLUMBING ISOMETRICS, BUILDING ELEVATIONS

FRAME / CHASSIS:	
Frame Type:	Basement (CH2)
Quantity:	(8) EA
Size:	11'-10" X 60'-0"
Type:	Outrigger @ 48" O.C. Crossmember @ 96" O.C. Module line Clips @ 96" O.C. Main Rails @ 99 1/2" O.C.
Beam Size:	12" Jr. I-beam
Axles:	
Module #1:	Qty: Five 6000# rated with (All) brake Offset: None
Modules #2-8:	Qty: Quad 6000# rated with (All) brake Offset: None
Hitch:	Detachable with Standard Hitch
Tires:	8x14.5 14 ply rated
<u>Additional Frame / Chassis Items Included in Quoted Price:</u>	
Item 1:	None

FLOOR CONSTRUCTION:	
Floor Joist:	2X8 #2 HF equal or better
Joist Length:	135-7'8"
Joist Spacing:	16" O.C.
Floor:	Single layer 3/4" T&G Plywood.
Insulation:	R-30 unfaced fiberglass batt (2-layer of R-15)
Bottom:	Reinforced Plastic
<u>Additional Floor Items Included in Quoted Price:</u>	
Item 1:	None

EXTERIOR WALL CONSTRUCTION:	
Framing:	Stud: 2X6 #2 HF equal or better @ 16" O.C. Top Plate: Double 2X6 #2 HF equal or better Bottom Plate: Single 2X6 #2 HF or better Header: (3) 2x4 header with (2) 1/2" shim at all exterior openings (UNO)
Insulation:	R-21 Kraft back fiberglass batt
Siding Type:	7/16" LP Smart-panel vertical siding (8" grooves) with barricade wrap underlayment.
Sidewall Height:	See cross section for heights
<u>Additional Exterior Wall Items Included in Quoted Price:</u>	
Item 1:	None

INTERIOR WALL CONSTRUCTION:	
Framing:	Stud: 2X4 #2 HF equal or better @ 16" O.C. Top plate: Single 2X4 #2 HF equal or better (Double as needed) Bottom plate: Single 2X4 #2 HF or better bottom plate Stud length: 92-6'8" (Ceiling Ht.)
Insulation:	NONE
<u>Additional Interior Wall Items Included in Quoted Price:</u>	
Item 1:	None

ROOF CONSTRUCTION:	
Roof Type:	Complex
Roof Slope:	1/4 in 12
Rafter size:	2X10 #2 HF equal or better (Roof diaphragm chord strap ST2215' at rafters installed on-site, see 2/2)
Rafter Length:	Modules 1 & 8: 135 1/8" Modules 2 thru 7: 131 1/4"
Spacing:	24" O.C.
Male Beam:	Steel clearspan web truss with (wood) columns at each end
Height:	22 1/2" to 30" to 22 1/2"
Length:	60'
No. of Beams:	14
Insulation:	R-38C unfaced fiberglass batt with support netting
Sheathing:	1/2" 24/0 Sheathing
Roofing:	45 mil single ply EPDM over 1/2" Gypsum Color: White
<u>Additional Roof Items Included in Quoted Price:</u>	
Item 1:	Install draft stopping between Mod-lines 4 & 5 (See detail 4/6)

FINISHES:	
FLOOR COVERING:	
Type 1:	0.080 self cove Sheet vinyl, covered up wall min. 5' Location: (RESTROOMS) Color: Same as body Qty: 45 Sheets Color to be: (T.B.D.)
Type 2:	1/8" V.C.T. Tile to be 50% OFFSET. Hold back tile (5 1/2") at each side of the matelines. Location: (REMAINDER) Color to be: (T.B.D.)
BASE:	
Cove Base 1:	4" Vinyl cove. Location: (THRU-OUT EXCEPT RESTROOMS) Color to be: (T.B.D.)
WALLS:	
Covering 1:	1/2" vinyl covered gypsum Location: (THRU-OUT) Covering height: 8' Color to be: (T.B.D.)
Covering 2:	Standard FRP panels (per code) Location: (Restrooms and Mop Sink) Covering height: 4' Color: (White)
TRIM:	
Wall Trim 1:	Vinyl Covered trim Color to be: (To match VCG)
CEILING:	
Type 1:	2x4 HEAVY DUTY T-Grid w/ Struts & wires (Armstrong Tile #769A or Equal) Height: 7'-10"
Installed at factory, held back at module lines. Completion of ceiling installation on-site by others; not in PMI's scope.	

SKIRTING:	
Skirting:	4x8' Sheets (Same material as siding) Color: Same as body Qty: 45 Sheets Trim: 3/8"x4"x16" (Same size / color as trim) Qty: 2 Pieces

EXTERIOR/INTERIOR DOORS: (SEE DOOR SCHEDULE)	
WINDOWS: (SEE WINDOW SCHEDULE)	
CLOSEUP:	
Type:	Medium
Notes:	Module WILL exceed 12'-0" (Including door hardware and lights)
APPLIANCES:	
None provided	
ACCESSORIES:	
Base Cabinets:	8.25 L.F. Color: Pre-Finish (Maple Rye)
Upper Cabinets:	8.25 L.F. Color: Pre-Finish (Maple Rye)
Counters:	10.92 L.F. of 25-1/2" wide Laminate Countertop Backsplash: 4" Edge Type: Rolled Color: (T.B.D.)

MANUFACTURER:	
MANUFACTURER & ADDRESS:	PHOENIX MODULAR 5301 W. MADISON ST. PHOENIX, AZ 85043 PHENIXMODULAR.COM
(SEE WEBSITE FOR WARRANTY INFORMATION)	
DESIGN CRITERIA / LOADS:	
NO OF MODULES:	8
BUILDING SQ.FT.:	5680
TYPE OF CONSTRUCTION:	VB
OCCUPANCY USE GROUP:	B
OCCUPANCY LOAD:	47 (AZ & UT) / 65 (NV)
FLOOR LIVE LOAD:	50 psf. (2000 lb concentrated) (100 psf @ breakroom)
ROOF LIVE LOAD:	20 psf.
ROOF DEAD LOAD:	12 psf.
ROOF SNOW LOAD:	30 psf.
PERMISSIBLE GAS TYPE:	N/A
AZ CODES:	2018 IBC, 2018 IPC, 2018 IMC, 2017 NEC, 2018 IECC, AND ICC A117.1-2009
WIND LOAD:	2018 IBC - 115 MPH, EXP. C
CLIMATE ZONE:	3B, 5B
SEISMIC:	Ss=0.4, S1=0.12 Site Class 'D' Design Category 'C'
NV CODES:	2012 IBC, 2012 UPC, 2012 UMC, 2011 NEC, 2012 IECC, AND ICC A117.1-2009
WIND LOAD:	IBC - Wind - 89 MPH, EXP. C IBC - Vul - 115 MPH, EXP. C
CLIMATE ZONE:	3B, 5B
SEISMIC:	Ss=1.5, S1=0.89 Site Class 'D' Design Category 'E'
UT CODES:	2018 IBC, 2018 IPC, 2018 IMC, 2017 NEC, 2018 IECC, AND ICC A117.1-2009
WIND LOAD:	2018 IBC - 115 MPH, EXP. C
CLIMATE ZONE:	5B
SEISMIC:	Ss=1.5, S1=0.86 (Simplified) Site Class 'D' Design Category 'E'

SPECIAL CONDITIONS AND / OR LIMITATIONS:	
SPRINKLERS REQUIRED:	NO

RED TAG:	
NONE	

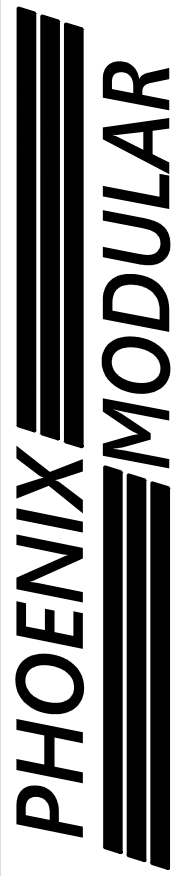
NOT INCLUDED IN SCOPE OF WORK:	
<ol style="list-style-type: none"> PORCHES, STEPS, AND RAMPS TO BE SUPPLIED AND INSTALLED BY OTHERS IN ACCORDANCE WITH THE LOCAL BUILDING DEPARTMENT PORTABLE FIRE EXTINGUISHERS TO BE SUPPLIED AND INSTALLED ON SITE BY OWNER IN ACCORDANCE WITH LOCAL BUILDING DEPARTMENT ACCESSIBLE DRINKING FOUNTAIN TO BE PROVIDED ON SITE BY OWNER LOCATED WITHIN 500 FEET ON AN ACCESSIBLE ROUTE ADDITIONAL HANDICAP TOILET FACILITIES PROVIDED IN ADJACENT BUILDING ON THE SAME PROPERTY LOCATED WITHIN 500 FEET ON AN ACCESSIBLE ROUTE SERVICE SINK PROVIDED IN ADJACENT BUILDING ON THE SAME PROPERTY ANY REQUIRED FIRE/SMOKE DETECTION AND/OR SUPPRESSION TO BE INSTALLED BY OTHERS ON SITE IN ACCORDANCE WITH THE LOCAL BUILDING DEPARTMENT THE BUILDING OWNER IS RESPONSIBLE FOR THE DEVELOPMENT & DESIGN OF ALL SITE-REQUIRED ACCESSIBILITY ELEMENTS. THESE ELEMENTS ARE NOT INCLUDED IN THE SCOPE OF THIS DESIGN. SUBMITTALS ARE REQUIRED BY OWNER THROUGH THEIR DESIGN PROFESSIONAL 	

IDENTIFICATION:	
DATA PLATE AND STATE DECAL TO BE LOCATED ON LOWER RIGHT HAND CORNER OF THE ENDWALL OPPOSITE THE HITCH END OF THE MODULE.	

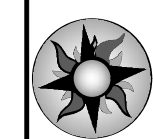
NOTES:	
<ol style="list-style-type: none"> SITE PLAN NOT AVAILABLE AT THIS TIME. BUILDING DESIGNED TO HAVE FIRE SEPARATION DISTANCE GREATER THAN 10 FT. TO PROPERTY LINES AS PER LOCAL BUILDING DEPARTMENT REQUIREMENTS. THIS PLAN MAY BE REVERSED AND/OR MIRRORRED. SEE STRUCTURAL PACKAGE FOR ALL STRUCTURAL STANDARDS AND DETAILS. APPROVAL # F8073-2 BUILDING WILL NOT BE LOCATED IN A FLOOD HAZARD AREA. BUILDING SHALL NOT BE SITED WHERE LOCAL CONDITIONS EXCEED THE DESIGN PARAMETERS. 	

STATE REQUIRED INFORMATION ON USE AND LOCATION OF FACTORY-BUILT BUILDING	
1. PROPOSED ADDRESS:	167 N. MAIN ST.
AND/OR LOCATION UNIT:	TUBA CITY, AZ 86045
2. EXPLANATION OF BUILDING USE:	OFFICES
3. SET TYPE:	PAD/PIER ABOVE GRADE ASSUMED F.F. TO BE 36" A.F.G.

APPROVED without changes	
<input type="checkbox"/> APPROVED EXCEPT AS NOTED	
<input type="checkbox"/> REVISE AND RESUBMIT	
Truman Kyaan TCRHC Facilities Project Manager	
BY:	DATE: 11/04/2021
PLEASE REVIEW DRAWINGS AND SPECIFICATIONS CAREFULLY. WHILE EVERY EFFORT IS MADE TO ASSURE THE DRAWINGS REFLECT THE EXPECTATIONS AND QUOTATION, THE FINAL CONSTRUCTION WILL BE BASED SOLELY ON THE SPECIFICATIONS AND DRAWINGS APPROVED.	



PHOENIX MODULAR
5301 W. MADISON ST. - PHOENIX, AZ 85043
PH 602-447-6460 FAX 602-447-6460



SUNBELT MODULAR, INC.

THESE DRAWINGS
REMAIN THE PROPERTY
OF PHOENIX MODULAR
AND ARE NOT TO BE
USED IN ANYWAY
WITHOUT WRITTEN
PERMISSION.

DEALER:
ARIES BUILDINGS

PROJECT:
TUBA CITY OFFICES

STATES:
AZ, NV, UT

SERIAL NUMBERS:
PMI-5119-9660

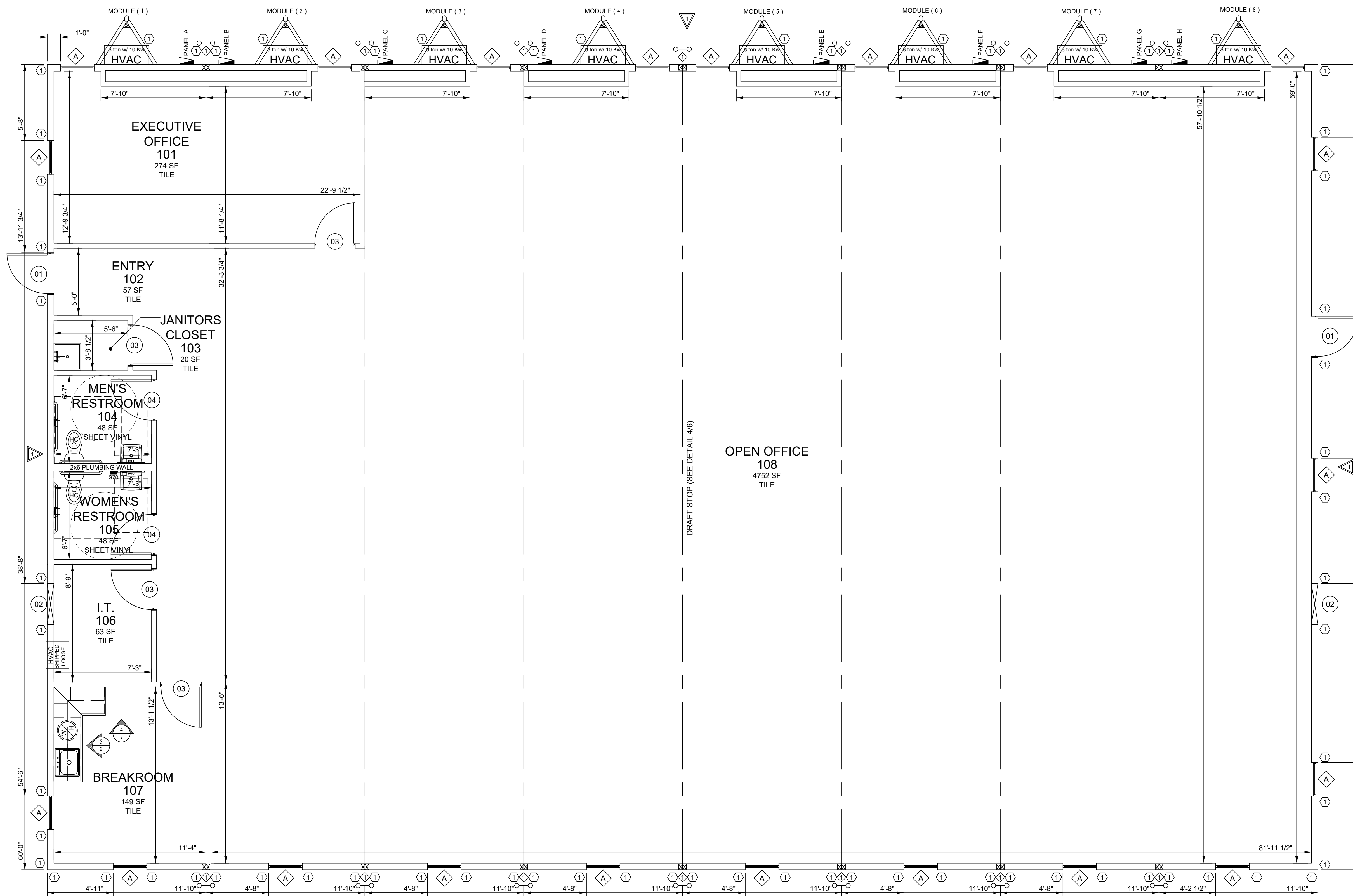
DRAWN BY:
VE/JP

PLOT DATE:
10/28/2021

REV # / DATE:

R. MARK STEELE, P.E.
CORPORATE ENGINEER
SUNBELT MODULAR, INC
5301 W. MADISON STREET
PHOENIX, AZ. 85043
(602) 327-4769

SHEET:
1
OF
6



1 FLOOR PLAN
 1/4"=1'-0" SQUARE FOOTAGE - 5680 S.F.
 OCCUPANCY LOAD = 47 (AZ & UT) / 65 (NV)

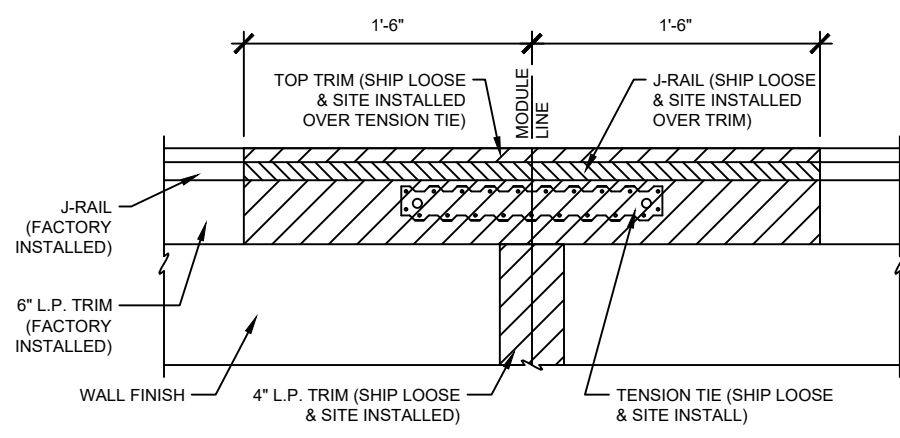
PLUMBING:

Symbol	Type	Qty	Note	Description
WC	Water Closet	2		Floor mid. ADA elongated tank type with shut off valve / flush handle to be on open side of r.r. (Factory standard)
GB	Grab Bars	2		Set(s) with (1) each 42", 36" horizontal, and 18" vertical
PH	Paper Holder	2		Single roll wall mount toilet paper holder mid. ADA height (Factory standard)
LAV	Lavatory	2		19" X 17" White vitreous wall hung with ADA handles and shut off valves. (Factory standard)
S	Sink	1		25" X 22" Stainless steel single bowl sink with single faucet, ADA handle, and shut off valves (Factory standard)
S	Sink	1		24x24 Floor mounted mop sink with wall mounted faucet (Factory standard)
M	Mirror	2		24"x36" w/ clips mtd. 38" to bottom edge (Factory standard)
SH	Water Heater	1	Chronomite: S70WMD240V or equal	Insta-Hot Chronomite S-70 (Electric - 240V)
WH	Water Heater	1	6 Gallon w/ seismic straps	120v Electric with relief valve, water tight drain pan (3/4" drain), and pipe insulated first 8' (non-simultaneous operation) (Factory standard)
IS	In-line Strainer	1	1"	Strainer at supply entrance
SI	Supply	1	Copper Inlet	Type M copper
DS	DWV System	1		ABS Schedule 40 (Manifold is by others)
RS	R.R. Sign	1	Door Mtd	Women's ADA restroom sign w/ braille mtd. 59" a.f.f. to center
RS	R.R. Sign	1	Door Mtd	Men's ADA restroom sign w/ braille mtd. 59" a.f.f. to center

STRUCTURAL LEGEND

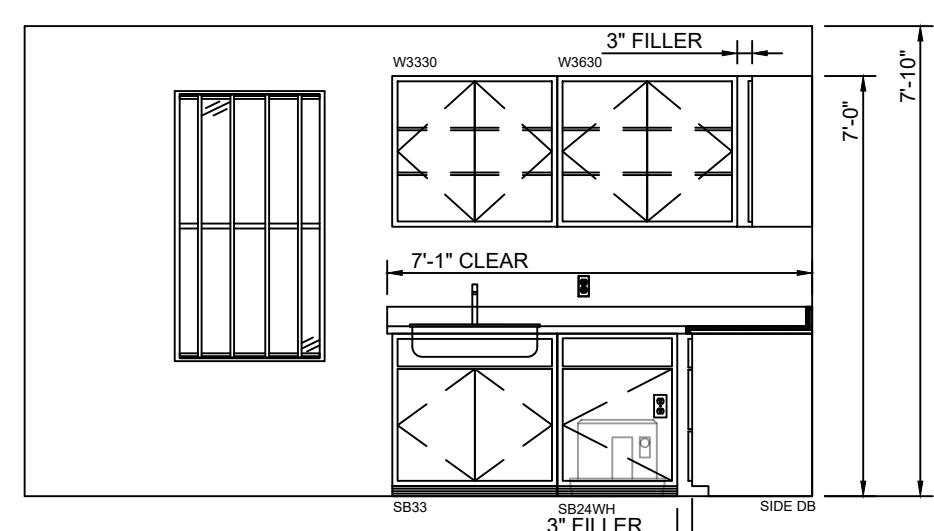
"ALL INTERIOR DIMENSIONS ARE FROM FINISH TO FINISH & ALL EXTERIOR DIMENSIONS ARE FROM STUD TO STUD"

Symbol	Description	Qty
△	SHEARWALL TAG (SEE STRUCTURAL PACKAGE FOR DESCRIPTION, SEE SHEET 24)	TYP @ 4 LOCATIONS
⊗	HOLD DOWN TAG (SEE STRUCTURAL PACKAGE FOR DESCRIPTION, SEE SHEET 24)	TYP @ 74 LOCATIONS
○	DIAPHRAGM CHORD TIE SIMPSON 'ST2215' (SEE DETAIL 2/2)	TYP @ 14 LOCATIONS
◇	(1) 3.5"x3.25" LVL 2.0 E GRADE ON EACH SIDE OF MOD LINE (TYP. #3 HOLD DOWN STRAP @ BOTTOM & BOLTED @ TOP)	TYP @ 14 LOCATIONS

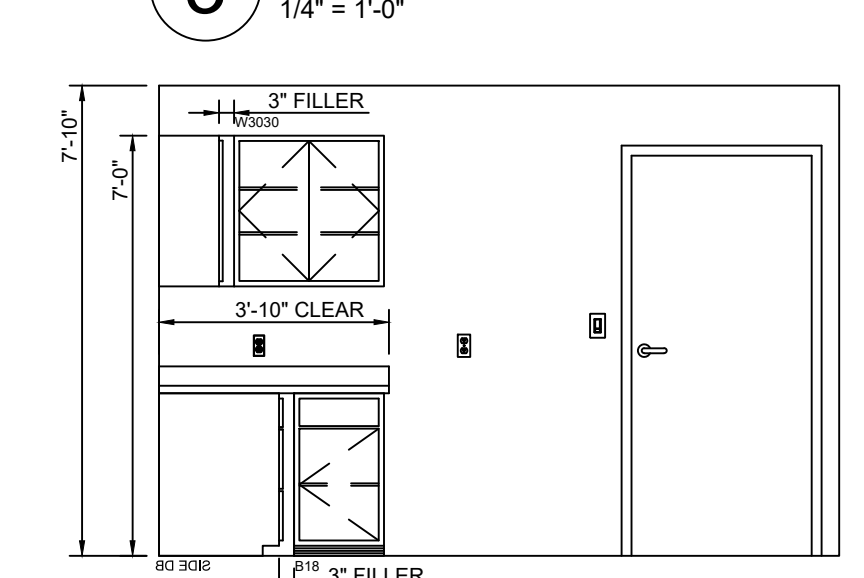


STRAP TYPE	FASTENERS	VALUE (LBS)
SIMPSON 'ST2215'	(20) 16d NAILS (0.162"Ø x 2-1/2")	1875#

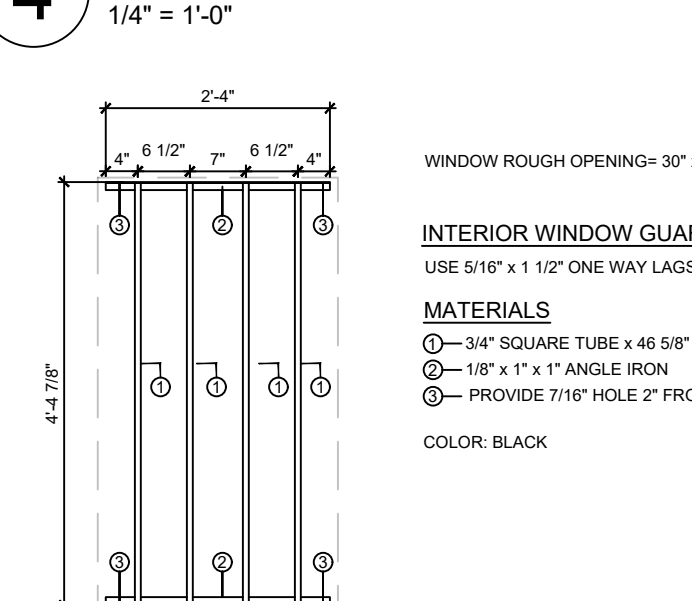
2 ROOF DIAPHRAGM MODLINE CHORD TIE
 1" = 1'-0"



3 CABINET ELEVATION
 1/4" = 1'-0"



4 CABINET ELEVATION
 1/4" = 1'-0"



5 INTERIOR WINDOW GUARDS
 N.T.S.

WINDOWS:

Qty	NO.	Type	Glazing	Size	Rough Opening	U-Factor	SHGC	Mini-Blind	Notes
21	A	WHITE VINYL VERTICAL SLIDER	CLEAR, DUAL GLAZED, LOW-E	2/6X5/0	30" x 60"	0.31	0.22	HORIZONTAL ALUMINUM. COLOR: (T.B.D.)	HEADER AT 81" AFF, INTERIOR MOUNT WINDOW GUARDS (SEE DETAIL 5/2)

DOORS:

Qty	NO.	Type	Jamb	Wall Thickness	Glazing	Size	Rough Opening	U-Factor	Color	Closer	Deadbolt	Hardware	Fire Rating	Keying	Notes
2	01	STEEL, INSULATED 18 GA.	TELL 16 GA. BRONZE	6 7/16"	NONE	3/0X6/8	38" x 81"	0.31	T.B.D. (SAME BOTH SIDES)	HYDRAULIC	NONE	PANIC TELL 8300B W/ KEYED LEVER	NONE	ALIKE	DRIP CAP, (2) STD & (1) NRP HINGES, WEATHERSTRIPPING, THRESHOLD, & DOOR SWEEP
2	02	FINISHED OPENING	1/2" VCG	6-7/16"	N/A	3/0X6/8	39" x 81 1/2"	N/A	VCG	N/A	N/A	N/A	N/A	N/A	NONE
4	03	PREFINISHED WOOD HOLLOW CORE	TIMELY METAL JAMB BROWNTONE	4 1/2"	NONE	3/0X6/8	37 1/2" x 80 3/4"	N/A	LEGACY OAK	NONE	NONE	PASSAGE LEVER, TELL GRADE 3	NONE	N/A	HINGES & WALL MOUNT STOPS
2	04	PREFINISHED WOOD HOLLOW CORE	TIMELY METAL FRAME BROWNTONE	4 1/2"	NONE	3/0X6/8	37 1/2" x 80 3/4"	N/A	LEGACY OAK	NONE	NONE	PRIVACY LEVER, TELL GRADE 3	NONE	N/A	HINGES & WALL MOUNT STOPS

PHOENIX MODULAR
 5301 W. MADISON ST. - PHOENIX, AZ 85043
 PH 602-447-6460 FAX 602-447-6460
 SUNBELT MODULAR, INC.

THESE DRAWINGS REMAIN THE PROPERTY OF PHOENIX MODULAR AND ARE NOT TO BE USED IN ANYWAY WITHOUT WRITTEN PERMISSION.

DEALER: ARIES BUILDINGS

PROJECT: TUBA CITY OFFICES

STATES: AZ, NV, UT

SERIAL NUMBERS: PMI-5119-9660

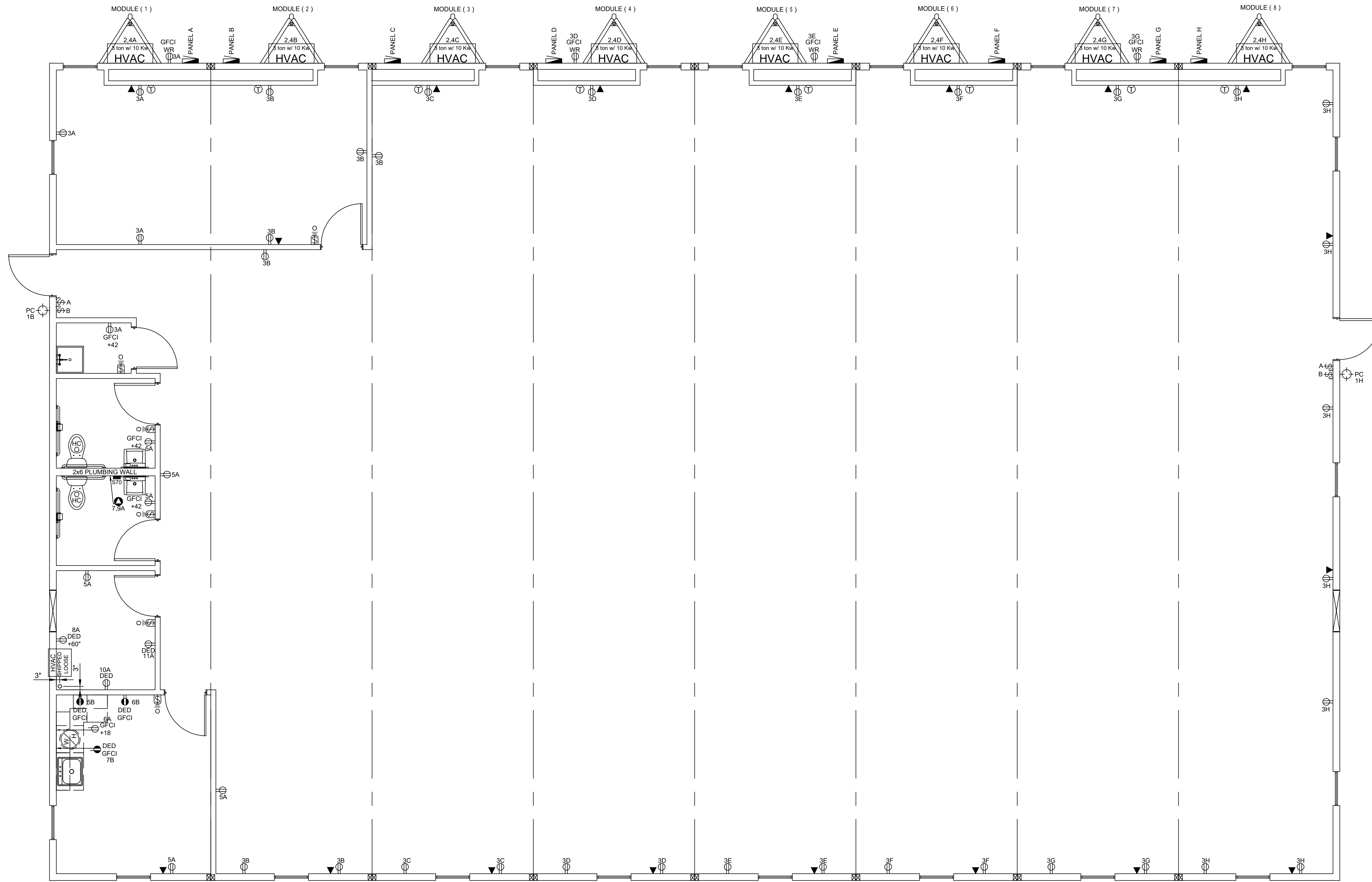
DRAWN BY: VE/AP

PLOT DATE: 10/28/2021

REV # / DATE:

R. MARK STEELE, P.E. CORPORATE ENGINEER
 SUNBELT MODULAR, INC
 5301 W. MADISON STREET
 PHOENIX, AZ 85043
 (602) 327-4769

SHEET: **2 OF 6**



1 ELECTRICAL PLAN
1/4"=1'-0"

Symbol	Type	Qty	Note	Description
	Elec Service	1		120/240V 60 HZ, single phase
	Elec Raceway	1		MC Cableflex
	Elec Panel	8	12-Space	120/240v 1 PH 125 amp panel w/ 125 amp main breaker. Exterior NEMA 3R mounted 36" a.f.f. to top (Factory standard)
4K	Lights	56		2x4 Flat panel LED recessed lay-in with dimmable electronic ballast (Factory standard)
6K	Lights	3		2x4 Flat panel LED recessed lay-in with dimmable electronic ballast (Factory standard)
	Lights	2		CTL: LW11LJBL/P -LED-CCT
	Lights	3		Topaz: F-FM11/15/RN/P/30/WH or equal
	Switch	2		15W Surface mounted 1100 lumen LED light
	Switch	6		15a/120v Standard dual toggle 3-way w/ cover plate mtd. 46" a.f.f.
	Occupancy Sensor	7		Wattstopper: IOS-DOV or equal
	Receptacle	37		Sensor: CI-205 / Power pack: BZ-150 or equal
	GFCI Receptacle	4		20a/120v Duplex w/ cover plate mtd. 18" a.f.f. (Factory standard)
	GFCI WR Receptacle	4		20a/120v GFCI protected w/ cover plate mtd. 42" a.f.f. (Factory standard)
	DED Receptacle	3		20a/120v GFCI WR rated exterior receptacle with weatherproof in-use cover mtd. 18" a.f.f. (Factory standard)
	DED GFCI Receptacle	3		20a/120v Dedicated GFCI duplex w/ cover plate mtd. 42" a.f.f. (Factory standard)
	J-Box	18		4x4 Empty box w/ sngl. gang mud ring, and blank cover plate mtd. 18" a.f.f. for future phoneplate (Factory standard)
	J-Box	19		20a/120v 4x4 Wired box w/ cover plate mtd above ceiling to rafter for future power pole (Factory standard)
	Water Heater	1		35a/240v 4x4 Wired box w/ sng gang mud ring and cover plate for water heater mtd. 18" a.f.f. (Factory standard)
	Exhaust Fan	2		Bron: 671 or equal
	Misc	1		70 CFM Ceiling mounted / vent thru wall
	T-Stat	8		ABS stubbed thru-floor. 6" above floor and 6" below bottom belly
	Device Color	1		White Rogers: 1F78151
				Color to be: (WHITE) / Exterior device(s) and masonry boxes with metal cover plate as applicable

- NOTE:**
- ALL A.F.F. DIMENSIONS ARE TO THE CENTER OF THE DEVICE BOX UNLESS NOTED OTHERWISE (REFER TO SCHEDULE AND PLANS FOR HEIGHTS).
 - ALL ELECTRICAL ITEMS ARE FACTORY STANDARD UNLESS NOTED OTHERWISE.
 - BLANK COVERS WILL BE PROVIDED ON J-BOXES UNLESS NOTED OTHERWISE.
 - ALL EXTERIOR ELECTRICAL DEVICES TO BE WEATHERPROOF.

PHOENIX MODULAR
5301 W. MADISON ST. - PHOENIX, AZ 85043
PHI 602-447-6460 FAX 602-447-6460

SUNBELT MODULAR, INC.

THESE DRAWINGS REMAIN THE PROPERTY OF PHOENIX MODULAR AND ARE NOT TO BE USED IN ANYWAY WITHOUT WRITTEN PERMISSION.

DEALER: ARIES BUILDINGS

PROJECT: TUBA CITY OFFICES

STATES: AZ, NV, UT

SERIAL NUMBERS: PMI-5119-9660

DRAWN BY: VE/AP

PLOT DATE: 10/28/2021

REV # / DATE:

R. MARK STEELE, P.E.
CORPORATE ENGINEER
SUNBELT MODULAR, INC
5301 W. MADISON STREET
PHOENIX, AZ 85043
(602) 327-4769

SHEET: **3 OF 6**

Main Breaker: 22kVAC		125 AMP 120/240V 1 PHASE		EXTERIOR: NEMA 3R	
Branch Breakers: 10kVAC		PANEL WITH 125 AMP MAIN BREAKER		PANEL A	
Space	1	20	1500	1	20
12 Receptacles	3	20	6900	2	20
12 Receptacles	3	20	6900	2	20
6 6 Gal Water Heater	7	20	3500	6	20
3 thru wall AC	3	20	1800	3	20
2 Dead Receptacles	2	20	1400	2	20
12 Dead Receptacles	11	20	1400	11	20
ELECTRICAL CALCULATION:		PANEL A		ELECTRICAL CALCULATION:	
GENERAL LIGHTING:	0 wats	TYPE OF PANEL: LOAD CENTER		GENERAL LIGHTING:	0 wats
11 RECEPTACLES =	1980 wats			11 RECEPTACLES =	1980 wats
1 HVAC UNITS =	13200 wats			1 HVAC UNITS =	13200 wats
1 HW AC =	2880 wats			1 HW AC =	2880 wats
1 DED AC =	1100 wats			1 DED AC =	1100 wats
1 DUA IN/SHOT =	7000 wats			1 DUA IN/SHOT =	7000 wats
	25000 wats	break by 240 volts=	122 AMPS TOTAL		25000 wats

Main Breaker: 22kVAC		125 AMP 120/240V 1 PHASE		EXTERIOR: NEMA 3R	
Branch Breakers: 10kVAC		PANEL WITH 125 AMP MAIN BREAKER		PANEL B	
12 Lights	1	20	1500	1	20
12 Receptacles	3	20	6900	2	20
12 Ded. GFCI	5	20	1400	5	20
12 Ded. GFCI	7	20	1400	7	20
12 HW JBox	9	20	1800	9	20
12 HW JBox	9	20	1800	9	20
12 Space	11	20	1400	11	20
ELECTRICAL CALCULATION:		PANEL B		ELECTRICAL CALCULATION:	
GENERAL LIGHTING:	0 wats	TYPE OF PANEL: LOAD CENTER		GENERAL LIGHTING:	0 wats
7 RECEPTACLES =	1980 wats			7 RECEPTACLES =	1980 wats
1 HVAC UNITS =	13200 wats			1 HVAC UNITS =	13200 wats
3 DED GFCI =	4200 wats			3 DED GFCI =	4200 wats
3 HW JBOX =	5400 wats			3 HW JBOX =	5400 wats
	26800 wats	break by 240 volts=	112 AMPS TOTAL		26800 wats

Main Breaker: 22kVAC		125 AMP 120/240V 1 PHASE		EXTERIOR: NEMA 3R	
Branch Breakers: 10kVAC		PANEL WITH 125 AMP MAIN BREAKER		PANEL C	
12 Receptacles	3	20	6900	2	20
12 HW JBox	5	20	1800	5	20
12 HW JBox	7	20	1800	7	20
12 Space	9	20	1400	9	20
12 Space	11	20	1400	11	20
ELECTRICAL CALCULATION:		PANEL C		ELECTRICAL CALCULATION:	
GENERAL LIGHTING:	0 wats	TYPE OF PANEL: LOAD CENTER		GENERAL LIGHTING:	0 wats
4 RECEPTACLES =	560 wats			4 RECEPTACLES =	560 wats
1 HVAC UNITS =	13200 wats			1 HVAC UNITS =	13200 wats
3 HW JBOX =	7200 wats			3 HW JBOX =	7200 wats
	14460 wats	break by 240 volts=	60 AMPS TOTAL		14460 wats

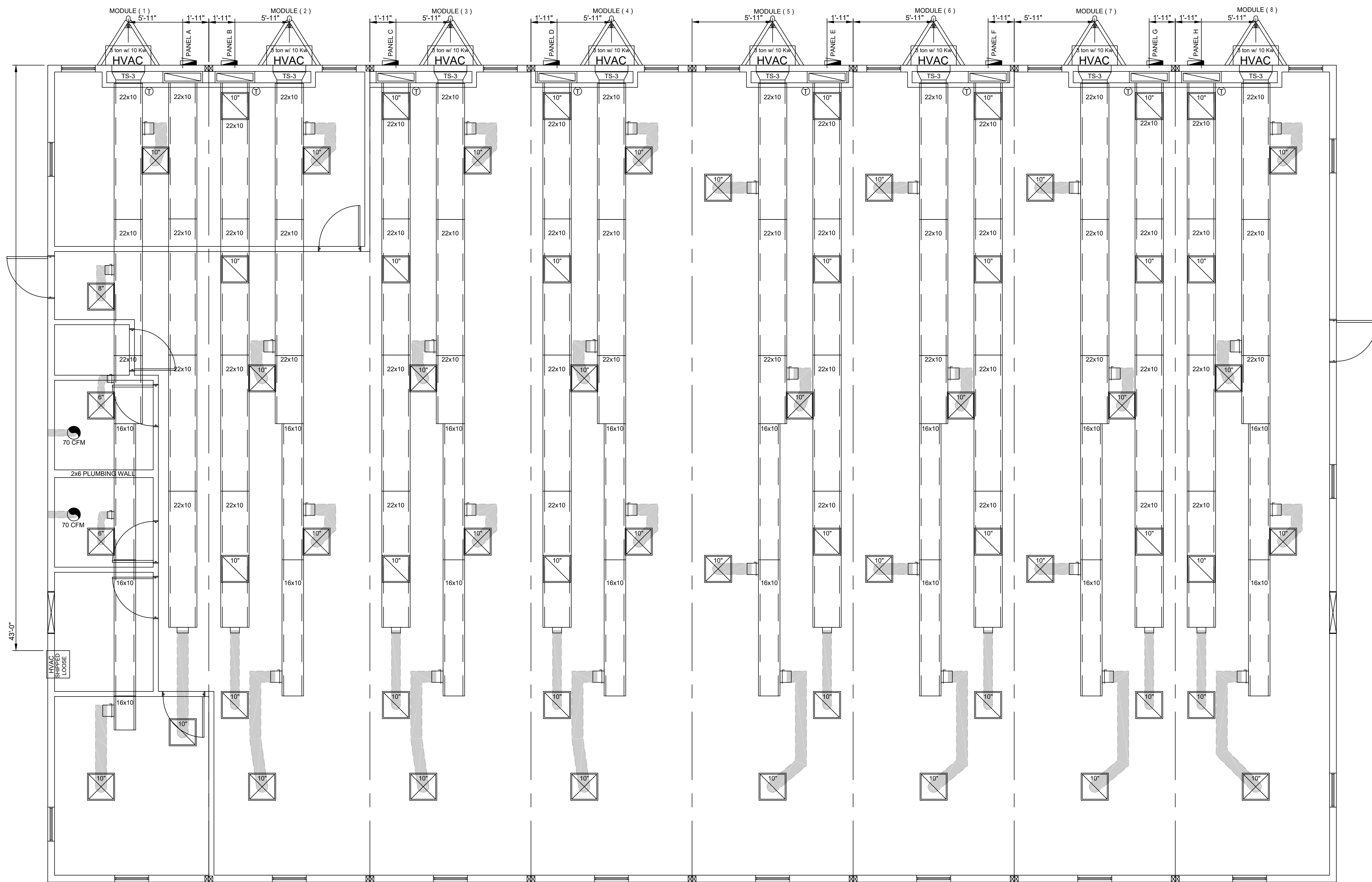
Main Breaker: 22kVAC		125 AMP 120/240V 1 PHASE		EXTERIOR: NEMA 3R	
Branch Breakers: 10kVAC		PANEL WITH 125 AMP MAIN BREAKER		PANEL D	
12 Receptacles	3	20	6900	2	20
12 HW JBox	5	20	1800	5	20
12 HW JBox	7	20	1800	7	20
12 Space	9	20	1400	9	20
12 Space	11	20	1400	11	20
ELECTRICAL CALCULATION:		PANEL D		ELECTRICAL CALCULATION:	
GENERAL LIGHTING:	0 wats	TYPE OF PANEL: LOAD CENTER		GENERAL LIGHTING:	0 wats
4 RECEPTACLES =	560 wats			4 RECEPTACLES =	560 wats
1 HVAC UNITS =	13200 wats			1 HVAC UNITS =	13200 wats
4 HW JBOX =	7200 wats			4 HW JBOX =	7200 wats
	21460 wats	break by 240 volts=	91 AMPS TOTAL		21460 wats

Main Breaker: 22kVAC		125 AMP 120/240V 1 PHASE		EXTERIOR: NEMA 3R	
Branch Breakers: 10kVAC		PANEL WITH 125 AMP MAIN BREAKER		PANEL E	
12 Receptacles	3	20	6900	2	20
12 HW JBox	5	20	1800	5	20
12 HW JBox	7	20	1800	7	20
12 Space	9	20	1400	9	20
12 Space	11	20	1400	11	20
ELECTRICAL CALCULATION:		PANEL E		ELECTRICAL CALCULATION:	
GENERAL LIGHTING:	0 wats	TYPE OF PANEL: LOAD CENTER		GENERAL LIGHTING:	0 wats
3 RECEPTACLES =	540 wats			3 RECEPTACLES =	540 wats
1 HVAC UNITS =	13200 wats			1 HVAC UNITS =	13200 wats
4 HW JBOX =	7200 wats			4 HW JBOX =	7200 wats
	21660 wats	break by 240 volts=	91 AMPS TOTAL		21660 wats

Main Breaker: 22kVAC		125 AMP 120/240V 1 PHASE		EXTERIOR: NEMA 3R	
Branch Breakers: 10kVAC		PANEL WITH 125 AMP MAIN BREAKER		PANEL F	
12 Receptacles	3	20	6900	2	20
12 HW JBox	5	20	1800	5	20
12 HW JBox	7	20	1800	7	20
12 Space	9	20	1400	9	20
12 Space	11	20	1400	11	20
ELECTRICAL CALCULATION:		PANEL F		ELECTRICAL CALCULATION:	
GENERAL LIGHTING:	0 wats	TYPE OF PANEL: LOAD CENTER		GENERAL LIGHTING:	0 wats
3 RECEPTACLES =	540 wats			3 RECEPTACLES =	540 wats
1 HVAC UNITS =	13200 wats			1 HVAC UNITS =	13200 wats
4 HW JBOX =	7200 wats			4 HW JBOX =	7200 wats
	21660 wats	break by 240 volts=	90 AMPS TOTAL		21660 wats

Main Breaker: 22kVAC		125 AMP 120/240V 1 PHASE		EXTERIOR: NEMA 3R	
Branch Breakers: 10kVAC		PANEL WITH 125 AMP MAIN BREAKER		PANEL G	
12 Receptacles	3	20	6900	2	20
12 HW JBox	5	20	1800	5	20
12 HW JBox	7	20	1800	7	20
12 Space	9	20	1400	9	20
12 Space	11	20	1400	11	20
ELECTRICAL CALCULATION:		PANEL G		ELECTRICAL CALCULATION:	
GENERAL LIGHTING:	0 wats	TYPE OF PANEL: LOAD CENTER		GENERAL LIGHTING:	0 wats
4 RECEPTACLES =	560 wats			4 RECEPTACLES =	560 wats
1 HVAC UNITS =	13200 wats			1 HVAC UNITS =	13200 wats
4 HW JBOX =	7200 wats			4 HW JBOX =	7200 wats
	14860 wats	break by 240 volts=	61 AMPS TOTAL		14860 wats

Main Breaker: 22kVAC		125 AMP 120/240V 1 PHASE		EXTERIOR: NEMA 3R	
Branch Breakers: 10kVAC		PANEL WITH 125 AMP MAIN BREAKER		PANEL H	
12 Lights	1	20	1500	1	20
12 Receptacles	3	20	6900	2	20
12 HW JBOX	5	20	1800	5	20
12 HW JBOX	7	20	1800	7	20
12 Space	9	20	1400	9	20
12 Space	11	20	1400	11	20
ELECTRICAL CALCULATION:		PANEL H		ELECTRICAL CALCULATION:	
GENERAL LIGHTING:	0 wats	TYPE OF PANEL: LOAD CENTER		GENERAL LIGHTING:	0 wats
8 RECEPTACLES =	1440 wats			8 RECEPTACLES =	1440 wats
1 HVAC UNITS =	13200 wats			1 HVAC UNITS =	13200 wats
4 HW JBOX =	7200 wats			4 HW JBOX =	7200 wats
	24240 wats	break by 240 volts=	101 AMPS TOTAL		24240 wats



HVAC:				
Symbol	Type	Qty	Note	Description
[HVAC Unit Symbol]	HVAC Unit	8	FAD - Smoke Duct Detector, Economizer	3 Ton cooling with 10KW heat strip 11 EER end mount unit / Model: W3SAC-A10 or equal
[HVAC Unit Symbol]	HVAC Unit	1	R.O.: 26 1/8" x 15 13/16" (L.G.LT1216CER) Shipped Loose	Thru Wall AC 120V with 11,800 BtuH cooling with wall sleeve and wireless remote up 68" a.f. to bottom
[Duct Sleeve Symbol]	Duct Sleeve	8		29"x9" To 22"x10" Galvanized sleeve, 16" long
[Return Air Plenum Symbol]	Return Air Plenum	8		32"x7" Return air plenum w/ 28"x14"x6" tap-in
[Fiberglass Duct Symbol]	Fiberglass Duct	1		16"x10"x2'-6" Fiberglass
[Fiberglass Duct Symbol]	Fiberglass Duct	16		16"x10"x10'-0" Fiberglass
[Fiberglass Duct Symbol]	Fiberglass Duct	8		22"x10"x5'-0" Fiberglass
[Fiberglass Duct Symbol]	Fiberglass Duct	48		22"x10"x10'-0" Fiberglass
[Supply Diffuser Symbol]	Supply Diffusers	2	6"	24" x 24" 4-way throw diffuser with start collar, collar w/ scoop and damper, and flex (Factory standard)
[Supply Diffuser Symbol]	Supply Diffusers	1	8"	24" x 24" 4-way throw diffuser with start collar, collar w/ scoop and damper, and flex (Factory standard)
[Supply Diffuser Symbol]	Supply Diffusers	27	10"	24" x 24" 4-way throw diffuser with start collar, collar w/ scoop and damper, and flex (Factory standard)
[R/A Grille Symbol]	R/A Grille	32	10"	24" x 24" Perforated lay-in with start collar, collar, and flex (Factory standard)
[Duct type Symbol]	Duct type	1		R-6 Fiberglass insulation. Flex duct not to exceed 14'

1 HVAC PLAN
1/4"=1'-0"

PHOENIX MODULAR
 5301 W. MADISON ST. - PHOENIX, AZ 85043
 PH: 602-447-6460 FAX: 602-447-6460
SUNBELT MODULAR, INC.

THESE DRAWINGS
 REMAIN THE PROPERTY
 OF PHOENIX MODULAR
 AND ARE NOT TO BE
 USED IN ANYWAY
 WITHOUT WRITTEN
 PERMISSION.

DEALER:
 ARIES BUILDINGS

PROJECT:
 TUBA CITY OFFICES

STATES:
 AZ, NV, UT

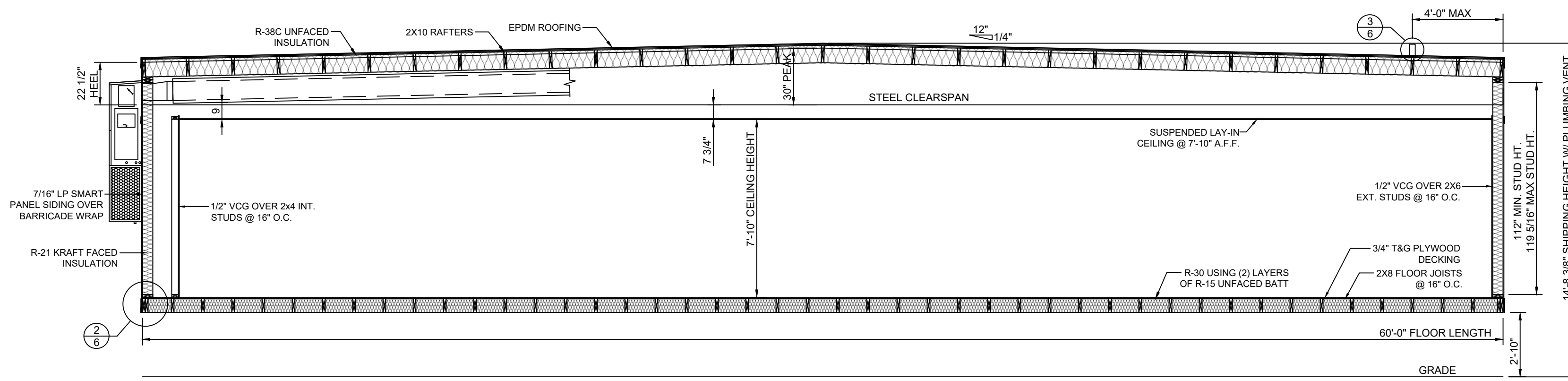
SERIAL NUMBERS:
 PMI-5119-9660

DRAWN BY:
 VE/JAP

PLOT DATE:
 10/28/2021

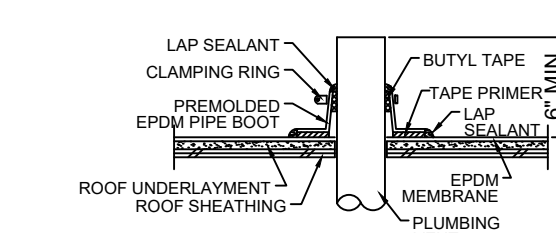
REV # / DATE:

R. MARK STEELE, P.E.
 CORPORATE ENGINEER
 SUNBELT MODULAR, INC
 5301 W. MADISON STREET
 PHOENIX, AZ 85043
 (602) 327-4769



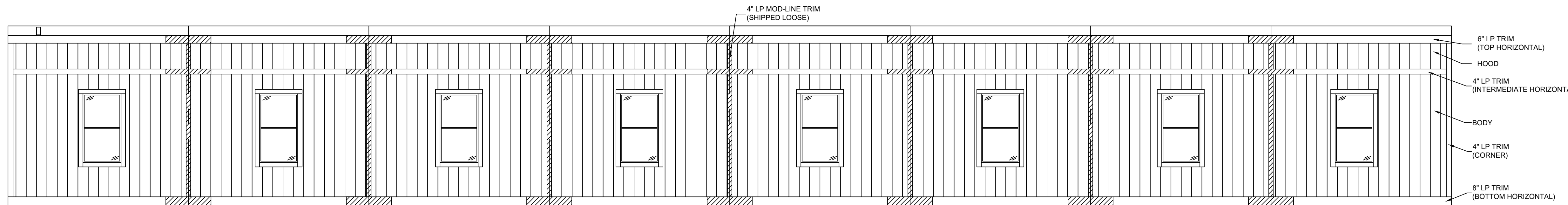
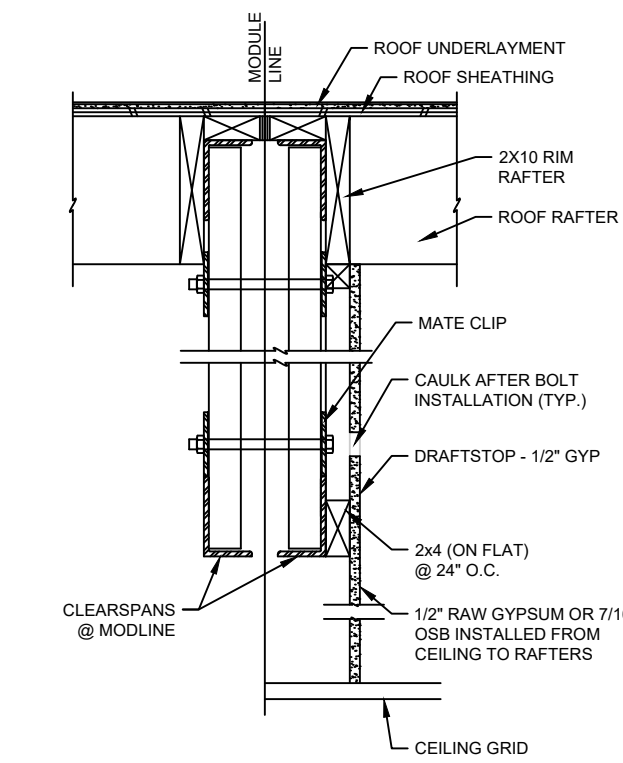
1 BUILDING CROSS SECTION
1/4"=1'-0"

2 WALL FINISH
1"=1'-0" @ FLOOR

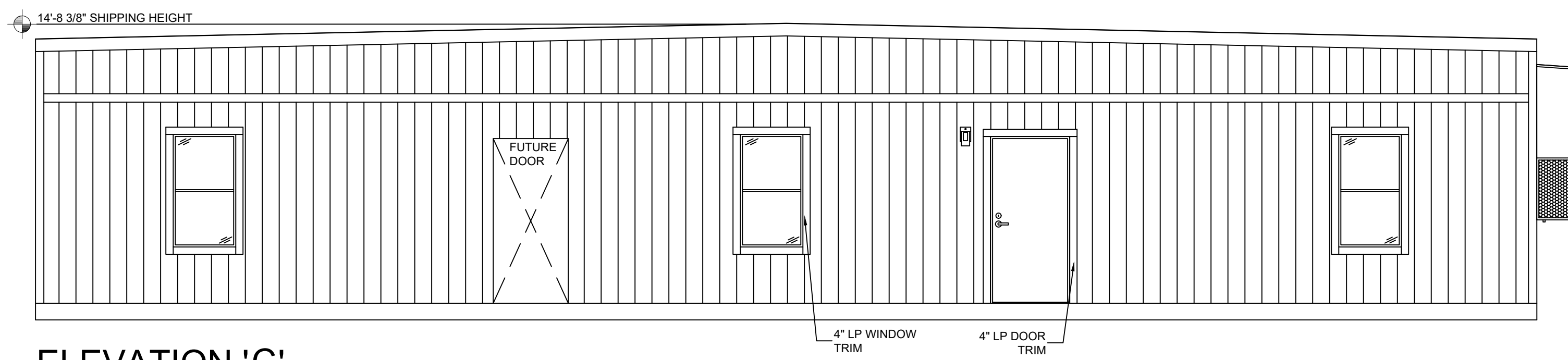


3 PLUMBING VENT
1"=1'-0" FACTORY INSTALLED

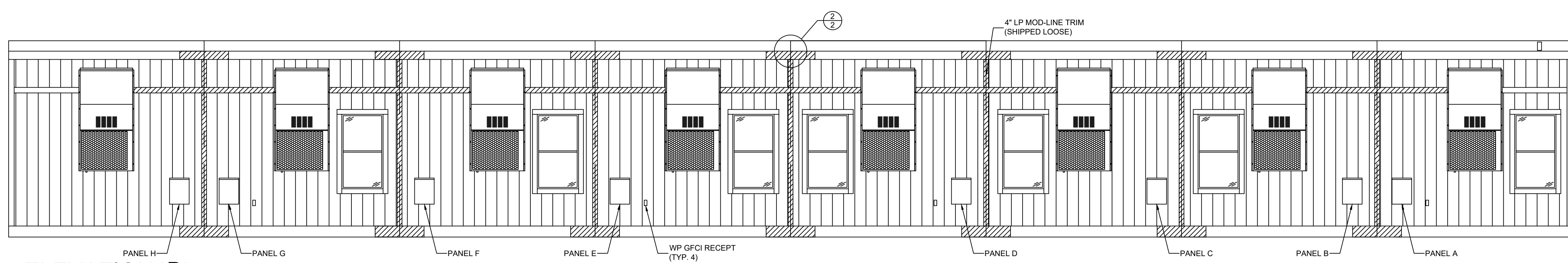
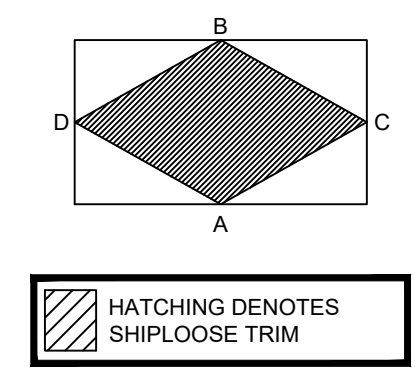
4 DRAFTSTOP
1"=1'-0" FACTORY INSTALLED



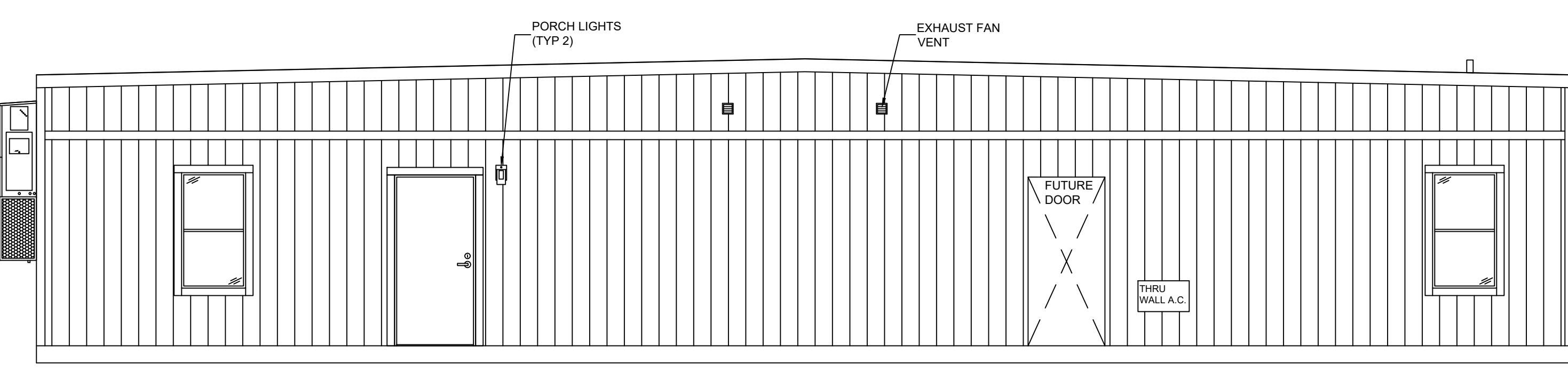
ELEVATION 'A'



ELEVATION 'C'



ELEVATION 'B'



ELEVATION 'D'

THESE DRAWINGS
REMAIN THE PROPERTY
OF PHOENIX MODULAR
AND ARE NOT TO BE
USED IN ANYWAY
WITHOUT WRITTEN
PERMISSION.

DEALER:
ARIES BUILDINGS

PROJECT:
TUBA CITY OFFICES

STATES:
AZ, NV, UT

SERIAL NUMBERS:
PMI-5119-9660

DRAWN BY:
VE/AP

PLOT DATE:
10/28/2021

REV # / DATE:

R. MARK STEELE, P.E.
CORPORATE ENGINEER
SUNBELT MODULAR, INC
5301 W. MADISON STREET
PHOENIX, AZ 85043
(602) 327-4769