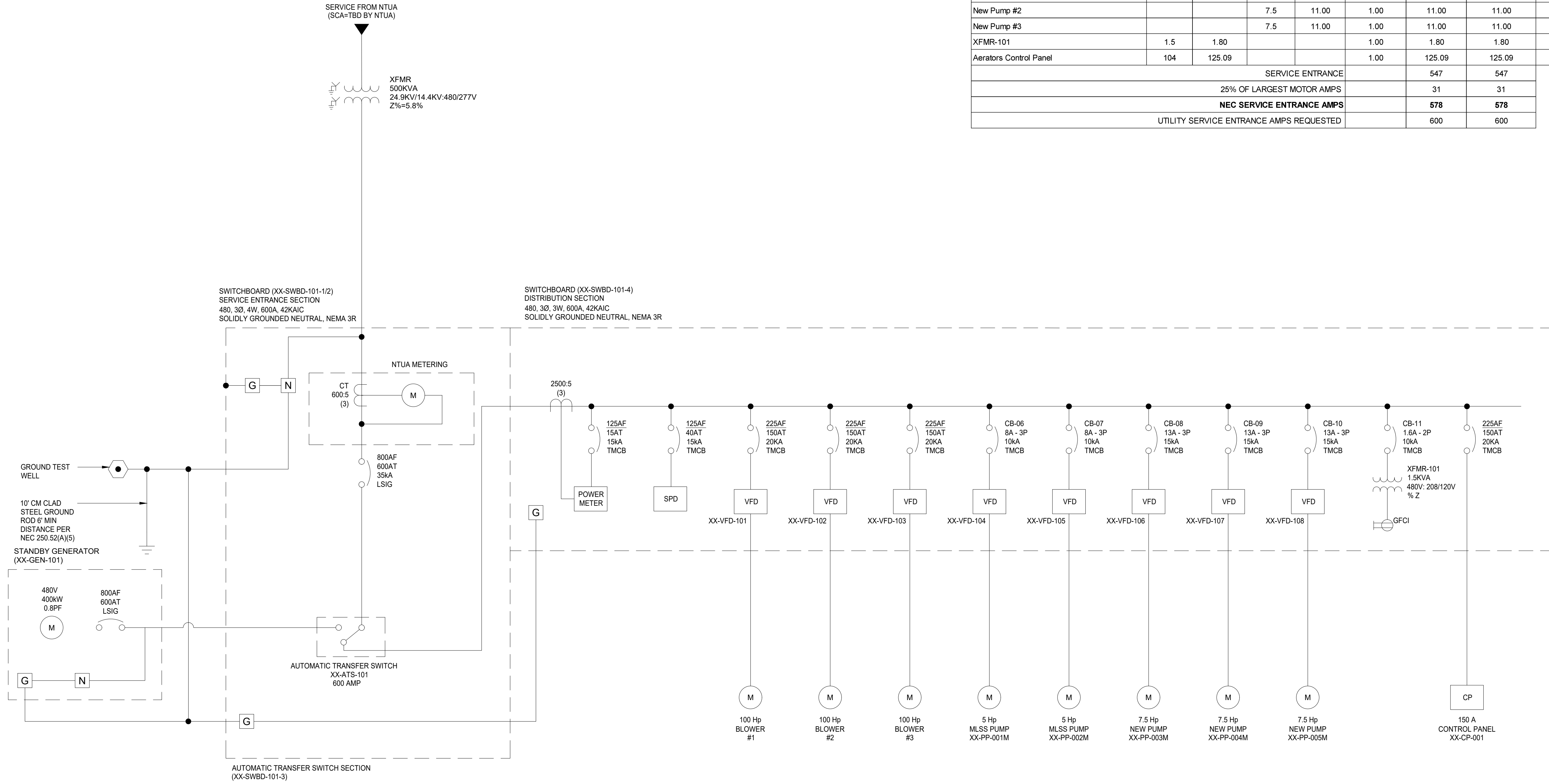




\\ussif002\Users\Salvarado\WWTP NTUA\High Performance\Kayenta\10-GEN-E-XXXX.dwg

LOAD DESCRIPTION	NON MOTOR LOAD KVA	NON MOTOR LOAD AMPS	MOTOR HP	MOTOR AMPS	DEMAND FACTOR	DEMAND SERVICE ENTRANCE AMPS	CONNECTED SERVICE ENTRANCE AMPS	POWER SOURCE
Blower #1			100	124.00	1.00	124.00	124.00	SB-001
Blower #2			100	124.00	1.00	124.00	124.00	SB-001
Blower #3			100	124.00	1.00	124.00	124.00	SB-001
MLSS Pump #1			5	7.60	1.00	7.60	7.60	SB-001
MLSS Pump #2			5	7.60	1.00	7.60	7.60	SB-001
New Pump #1			7.5	11.00	1.00	11.00	11.00	SB-001
New Pump #2			7.5	11.00	1.00	11.00	11.00	SB-001
New Pump #3			7.5	11.00	1.00	11.00	11.00	SB-001
XFMR-101	1.5	1.80			1.00	1.80	1.80	SB-001
Aerators Control Panel	104	125.09			1.00	125.09	125.09	SB-001
SERVICE ENTRANCE						547	547	
25% OF LARGEST MOTOR AMPS						31	31	
NEC SERVICE ENTRANCE AMPS						578	578	
UTILITY SERVICE ENTRANCE AMPS REQUESTED						600	600	

**4221 BALLOON PARK RD NE
ALBUQUERQUE, NM 87109**

PROJECT:
**KAYENTA WWTP
CFID
POND SYSTEM
FINAL DESIGN**



**NAVAJO TRIBAL
UTILITY AUTHORITY**

PO BOX 170
FT. DEFIANCIE, AZ 86504
WSP PROJECT No:
2151700051

REVISIONS		
NO.	DATE	DESCRIPTION

DESIGNED BY:	SA
DRAWN BY:	JJ
CHECKED BY:	JJ
DATE:	26MAY2023

SHEET TITLE:
**SWITCHBOARD
SINGLE LINE
DIAGRAM**

SHEET NUMBER:	REV. #
E-101	
SHEET - OF -	