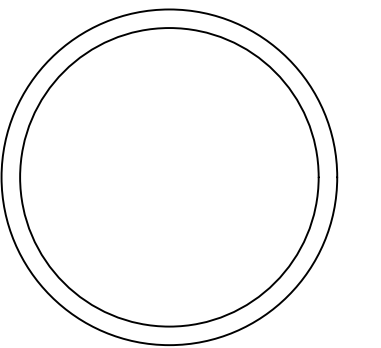


CHINLE WWTP BIOSOLIDS DISPOSAL NAVAJO TRIBAL UTILITY AUTHORITY CHINLE, ARIZONA



4221 BALLOON PARK RD NE
ALBUQUERQUE, NM 87109
TEL: (505) 821-1801



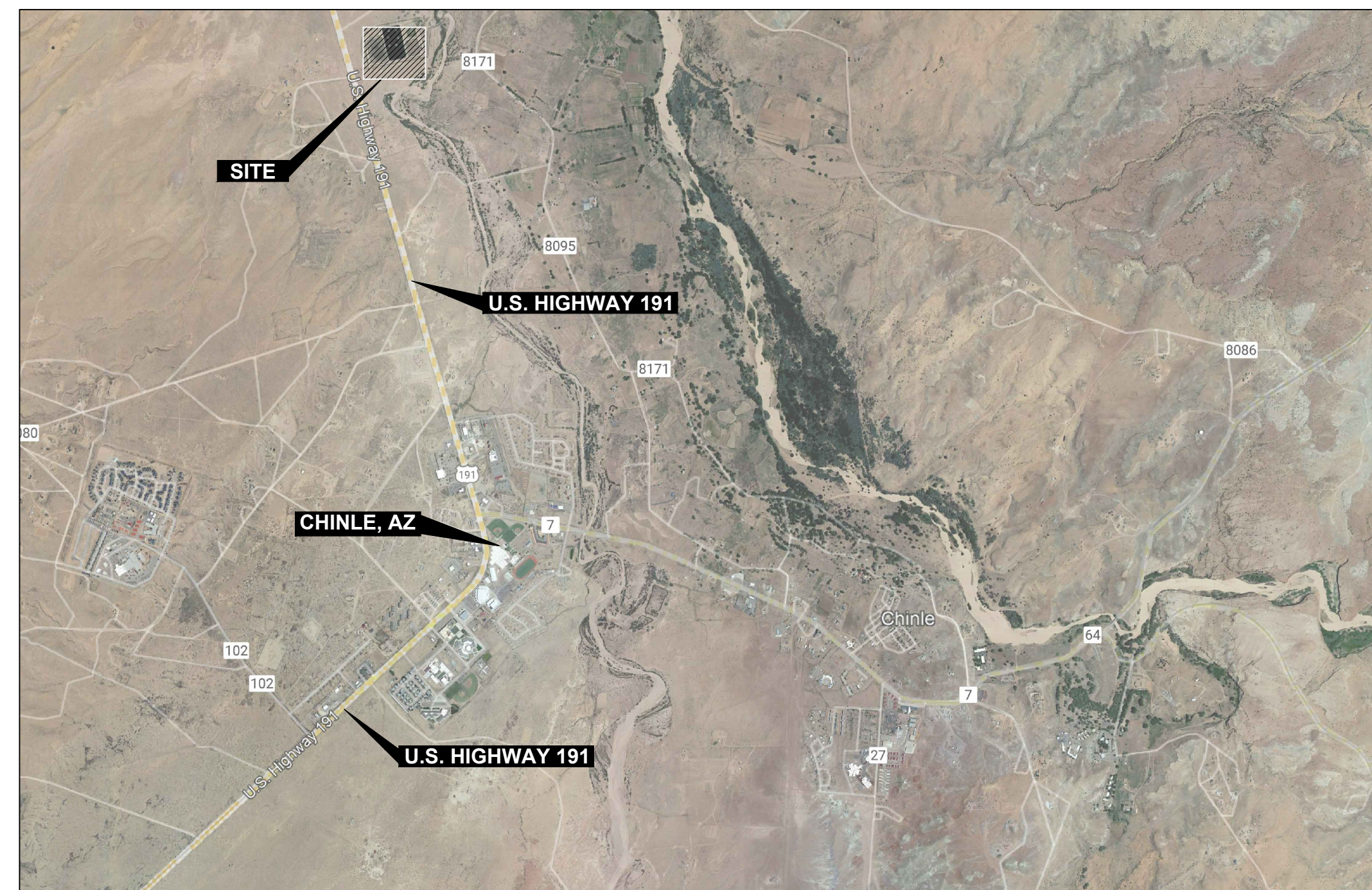
DRAFT

PROJECT:
**CHINLE WWTP
BIOSOLIDS DISPOSAL**
NOT FOR CONSTRUCTION

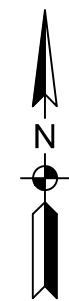


**NAVAJO TRIBAL UTILITY
AUTHORITY**
PO BOX 170
FT. DEFIANCE, AZ 86504
WSP PROJECT No:
2151700052

SHEET INDEX		
	SHEET NO.	SHEET TITLE
1	G-001	TITLE SHEET
2	G-002	GENERAL NOTES & LEGEND
3	C-100	EXISTING CONDITIONS SITE PLAN
4	C-101	EXISTING TOPOGRAPHIC SITE MAP
5	C-200	DEBRIS AND SLUDGE STAGING AREAS
6	C-300	GRADING PLAN
7	C-301	GRADING PROFILES
8	C-400	CELL 3 BACKFILL PLAN & SECTIONS
9	C-500	QUANTITIES TABLES
10	C-600	HDPE LINER DETAILS



SITE LOCATION
NTS



VICINITY MAP
NTS



DATE OF PREPARATION:
ORIGINAL ISSUE: XXXXXXX

**ENGINEER & GEOTECHNICAL
CONSULTANT:**
WSP
4221 BALLOON PARK RD NE
ALBUQUERQUE, NM 87109
TEL: (505) 821-1801

THE CONTRACTOR IS SPECIFICALLY CAUTIONED THAT THE EXISTING INFORMATION SHOWN ON THESE PLANS IS NOT TO BE RELIED ON AS BEING EXACT OR COMPLETE. THE CONTRACTOR WILL BE RESPONSIBLE FOR FIELD VERIFYING LOCATIONS AND DEPTHS OF EXISTING UTILITIES BEFORE COMMENCING CONSTRUCTION. THE CONTRACTOR MUST ALSO CALL 811 AND NAVAJO UTILITY AUTHORITY, P.O. BOX 170, FORT DEFIANCE, AZ, 86504 AT 928-729-5721 AT LEAST 3 WORKING DAYS BEFORE ANY EXCAVATION TO REQUEST EXACT FIELD LOCATION OF UTILITIES.

REVISIONS			
NO.	DATE	BY	APPROVED

DESIGNED BY:	WSP -
DRAWN BY:	WSP -
CHECKED BY:	WSP -
APPROVED BY:	WSP -
DATE:	XX/XX/2023

SHEET TITLE:

TITLE SHEET

SHEET NUMBER:	REV. #
G-001	
SHEET 1 OF XX SHEETS	

GENERAL NOTES:

QUALITY CONTROL

- 1.0 UNLESS OTHERWISE STATED, INDIAN HEALTH SERVICE (IHS)/NAVAJO ENGINEERING AND CONSTRUCTION AUTHORITY (NECA) SPECIFICATIONS (REV 1.5) AND INDIAN HEALTH SERVICE STANDARD DETAILS FOR WATER (REV 3.2) AND SEWER (REV 1.9) SHALL CONTROL THE MATERIALS AND WORKMANSHIP OF THIS PROJECT WHETHER SPECIFICALLY CALLED OUT OR NOT. THE IHS/NECA SPECIFICATIONS ARE A SEPARATE VOLUME AND NOT ISSUED AS PART OF THE CONSTRUCTION SET. SPECIFICATION SECTIONS AND STANDARD DRAWINGS, WHEN NOTED HEREIN, REFER TO CORRESPONDING PARTS OF THESE DOCUMENTS.
- 2.0 IF DURING THE COURSE OF WORK THE CONTRACTOR BECOMES AWARE OF A CONTRADICTION IN THE REQUIREMENTS BETWEEN THE STANDARD SPECIFICATIONS AND DRAWINGS AND THESE PLANS, THE CONTRACTOR SHALL NOTIFY THE ENGINEER.

SAFETY

- 3.0 THE CONTRACTOR IS SOLELY RESPONSIBLE FOR JOBSITE SAFETY AND FOR KNOWLEDGE AND COMPLIANCE WITH APPLICABLE O.S.H.A. STANDARDS AND OTHER FEDERAL, STATE, TRIBAL AND LOCAL SAFETY AND WORKPLACE COMPLIANCE REQUIREMENTS.

EXISTING CONDITIONS

- 4.0 THE LOCATION OF EXISTING UTILITIES, AS SHOWN ON THE DRAWINGS, ARE APPROXIMATE. THE CONTRACTOR IS RESPONSIBLE FOR THE ACCURATE LOCATION IN THE FIELD.
- 5.0 IF EVIDENCE OF SUBSURFACE ARCHAEOLOGICAL OR HISTORIC FEATURES ARE OBSERVED DURING CONSTRUCTION, THE CONTRACTOR SHALL IMMEDIATELY HALT CONSTRUCTION IN THE AREA, PROTECT THE SITE, AND NOTIFY THE ENGINEER. NO CONSTRUCTION ACTIVITY SHALL OCCUR WITHIN THE 50 FOOT BUFFER AROUND THE EXISTING ARCHAEOLOGICAL SITE UNTIL APPROVED.

PROJECT CONTROL

- 6.0 PROJECT CONTROL SHOWN HEREON WAS ESTABLISHED USING STATIC OBSERVATIONS AND POST PROCESSING USING THE NATIONAL GEODETIC OPUS SOLUTION SOFTWARE.

HORIZONTAL DATUM: AZSPCS EAST ZONE MODIFIED,
C.S.F= 1.000325
(SHIFT) FALSE NORTHING: +10.02'
(SHIFT) FALSE EASTING: -1.055'
TO BE UTILIZED AS "GROUND" COORDINATES

VERTICAL DATUM: NAVD88 (2011)

Point Table				
Point #	Northing	Easting	Elevation	Description
96	1889416.985	871408.932	5457.83	BCF BIA NAVAJO ROADS CDOT-4
97	1888984.260	869814.723	5458.41	FND 1/2" RB
98	1888015.160	870521.982	5462.40	FND 1/2" RB
99	1888143.586	870208.812	5464.88	SET 1/2" RB W/RED CAP
400	1887600.673	869855.570	5461.16	SET PANEL
403	1887940.899	871688.504	5463.53	SET PANEL

- 7.0 SCALES IN THESE PLANS ARE VALID WHEN PLOTTED ON 22"x34" (ANSI).

WORK AREA

- 8.0 THE CONTRACTOR SHALL CONFINE WORK TO WITHIN THE PRESCRIBED CONSTRUCTION LIMITS, EASEMENT, RIGHT-OF-WAY OR PROPERTY.
- 9.0 THE CONTRACTOR SHALL COORDINATE ACTIVITIES WITH THE OWNER AND ENGINEER TO MINIMIZE ACCESS TO ADJACENT PROPERTIES AND TRAFFIC DISRUPTIONS.
- 10.0 THE CONTRACTOR SHALL ACQUIRE THE NECESSARY LICENSES OR PERMITS WHEN WORKING WITHIN OR NEAR A RIGHT-OF-WAY, STREET, ROAD OR HIGHWAY, SIDEWALK, TRAIL, OR OTHER PUBLIC THOROUGHFARE AND SHALL INCORPORATE THE REQUIREMENTS OF SAID LICENSE/PERMIT.
- 11.0 WHEN WORKING IN OR NEAR TRAFFIC THE CONTRACTOR SHALL (AT A MINIMUM) PROVIDE, ADEQUATE SIGNS, BARRICADES, WARNING LIGHTS, AND FLAGGERS TO ENSURE THE SAFETY/PROTECTION OF THE PUBLIC, EMPLOYEES, AND THE WORK IN ACCORDANCE WITH THE "MANUAL ON UNIFORM TRAFFIC CONTROL DEVICES" (MUTCD), LATEST EDITION.
- 12.0 IT WILL BE THE CONTRACTOR'S RESPONSIBILITY TO MAINTAIN ACCESS TO EXISTING RESIDENCES, BUSINESSES, TURNOUTS AND INTERSECTING ROADS AT ALL TIMES DURING CONSTRUCTION.
- 13.0 IF A FENCED/SECURE STORAGE AREA FOR MATERIALS AND EQUIPMENT IS DESIRED, THE CONTRACTOR SHALL BE RESPONSIBLE FOR OBTAINING AN AREA OFF THE PROJECT SITE. USING THE AREA FOR STORAGE SHALL COMPLY WITH LOCAL ZONING OR OTHER ORDINANCES AND SHALL BE PERMITTED, IF REQUIRED.
- 14.0 OVERNIGHT PARKING OF CONTRACTOR'S EQUIPMENT SHALL NOT OBSTRUCT ACCESS OR DESIGNATED TRAFFIC LANES. THE CONTRACTOR SHALL PARK OR STORE EQUIPMENT AT SAFE DISTANCES FROM THE TRAVELED WAY.
- 15.0 THE CONTRACTOR IS RESPONSIBLE FOR SOIL EROSION, DRAINAGE CONTROL AND DUST DURING CONSTRUCTION AND MUST, WHEN APPLICABLE, PREPARE AND ADHERE TO A STORM WATER POLLUTION PREVENTION PLAN (SWPPP) PREPARED ACCORDING TO THE U.S. ENVIRONMENTAL PROTECTION AGENCY'S CONSTRUCTION GENERAL PERMIT(CGP).

- 16.0 THE CARE AND PROTECTION OF OTHER UTILITIES, STREET APPURTENANCES, DRAINAGE STRUCTURES AND OTHER INFRASTRUCTURE, WHETHER PUBLIC OR PRIVATE, THAT ARE NOT PART OF THE INTENDED WORK ARE THE RESPONSIBILITY OF THE CONTRACTOR.
- 17.0 WHERE TRENCHING AROUND OR BENEATH EXISTING UTILITY LINES OCCURS, THE CONTRACTOR WILL BE RESPONSIBLE FOR COORDINATING WITH THE UTILITY OWNER AND FOR SUPPORTING THE UTILITY LINE, AS REQUIRED BY THE UTILITY OWNER, DURING CONSTRUCTION. THE CONTRACTOR SHALL BE RESPONSIBLE FOR ASSURING THE UTILITY IS ADEQUATELY SUPPORTED BY COMPACTED BACKFILL OR OTHER MEANS AT THE COMPLETION OF CONSTRUCTION AS REQUIRED BY THE UTILITY OWNER. IF THE TECHNIQUES REQUIRED FOR STABILIZING OTHER UTILITIES CONFLICT WITH THE REQUIREMENTS OF THIS PROJECT THE CONTRACTOR SHALL NOTIFY THE ENGINEER.

EXCESS MATERIAL & DEBRIS

- 18.0 ANY EXTRA NATURAL SOIL (CLEAN OF OIL AND CHEMICALS) REMAINING AFTER BACKFILL AND COMPACTION MAY BE DISPOSED AT A SITE APPROVED BY THE OWNER. CONTRACTOR SHALL HAUL DEBRIS AND NON-NATURAL SOILS TO A CERTIFIED LANDFILL.

RECORD DRAWINGS

- 19.0 THE CONTRACTOR SHALL PREPARE AND MAINTAIN AN UP-TO-DATE SET OF RECORD DRAWINGS FOR THE PROJECT. THESE PLANS SHALL BE KEPT CURRENT DAILY AND SHALL BE MADE AVAILABLE FOR REVIEW AS REQUESTED BY THE ENGINEER. THE COST OF PREPARING AND MAINTAINING A RECORD DRAWING SET SHALL BE INCIDENTAL TO THE PROJECT.

PROJECT PURPOSE

- 20.0 DRIED SLUDGE WASTE STOCKPILED IN CHINLE PONDS 1, 3, AND 4 ARE TO BE DISPOSED OF IN A RE-PURPOSED POND 3. SOIL AND DEBRIS FROM POND 3 ARE TO BE REMOVED AND TEMPORARILY STOCKPILED. POND 3 IS TO BE RE-PURPOSED BY RESHAPING TO PREVIOUS AS-BUILT CONDITIONS (SEPT 1998) AND LINED WITH A 60 MIL HIGH DENSITY POLYETHYLENE (HDPE) GEOMEMBRANE LINER. IN ADDITION, PONDS 1 AND 4 ARE TO BE RE-SHAPED TO AS-BUILT CONDITIONS BUT REMAIN UNLINED.
- 21.0 DRIED SLUDGE WASTE FROM KAYENTA AND WINDOW ROCK ARE TO BE TRUCKED TO CHINLE FOR DISPOSAL WITHIN POND 3.

SOIL/SLUDGE/DEBRIS PLACEMENT

- 22.0 DRIED SLUDGE WASTE PLACED IN POND 3 WILL REQUIRE COMPACTION IN 8" LIFTS TO REDUCE THE VOLUME OF 1 CUBIC YARD OF STOCKPILED MATERIAL INTO 0.75 CUBIC YARDS OF COMPACTED MATERIAL. THE COMPACTION OF PLACED SLUDGE IS TO BE A MINIMUM OF 90 PERCENT OF THE MAXIMUM DENSITY DETERMINED USING ASTM D1557. MOISTURE CONDITIONING OF SOILS TO ACHIEVE THIS DENSITY MAY BE REQUIRED. PROCTOR ANALYSIS OF SLUDGE MATERIAL INDICATE A MINIMUM OF 10 PERCENT MOISTURE IS LIKELY TO ACHIEVE DESIRED DRY DENSITY.
- 23.0 POND 3 IS TO RECEIVE A 18-INCH CAP CONSISTING OF COMPACTED, CLEAN SOILS GENERATED AND SORTED FROM THE RESHAPING OF THE CHINLE PONDS. THE CAP WILL HAVE A 2.0 PERCENT GRADE AWAY FROM THE CENTER TO DRAIN STORM RUNOFF AWAY FROM THE POND.
- 24.0 CONCRETE, ROCK, AND DEBRIS GENERATED FROM POND RE-SHAPING AND ACCUMULATED FROM SORTING ARE TO BE BURIED IN A DESIGNATED AREA OF POND 1.

GENERAL LEGEND:

EXISTING		PROPOSED	
	FENCE		TOPOGRAPHIC CONTOUR
	OVERHEAD ELECTRIC LINE		
	POWER POLE		
	SANITARY SEWER LINE		
	SANITARY SEWER MANHOLE		
	TOPOGRAPHIC CONTOUR		
	UNDERGROUND ELECTRIC LINE		
	WATER LINE		



**4221 BALLOON PARK RD NE
ALBUQUERQUE, NM 87109
TEL: (505) 821-1801**



DRAFT

PROJECT:
**CHINLE WWTP
BIOSOLIDS DISPOSAL
NOT FOR CONSTRUCTION**



**NAVAJO TRIBAL UTILITY
AUTHORITY**
PO BOX 170
FT. DEFIANCE, AZ 86504
WSP PROJECT No:
2151700052

REVISIONS			
NO.	DATE	BY	APPROVED

DESIGNED BY:	WSP -
DRAWN BY:	WSP -
CHECKED BY:	WSP -
APPROVED BY:	WSP -
DATE:	XX/XX/2023

SHEET TITLE:
**GENERAL NOTES
& LEGEND**

SHEET NUMBER:	REV. #
G-002	
SHEET 2 OF XX SHEETS	

A:\consulting\projects\21\517-00051.NTUA.HPP.Chinle.WWF.Chinle.Biosolids.Disposal.CAD\2.C-002_GENERAL_NOTES & LEGEND.dwg

A:\consulting\projects\21\21-517-00051\NTUA HPP Chinle Biosolids Disposal_CAD\3-C-100_EXISTING CONDITIONS SITE MAP.dwg



SITE NOTES:

- ① POND 1: OFFLINE
- ② POND 2: ACTIVE TREATMENT POND
- ③ POND 3: OFFLINE
- ④ POND 4: OFFLINE
- ⑤ PLANT DISCHARGE CHANNEL
- ⑥ TRANSFORMER AND EMERGENCY POWER GENERATOR
- ⑦ TAILWORKS

SHEET GENERAL NOTES:

1. UTILITIES ILLUSTRATED ON PLAN ARE PRESENTED FOR CONTRACTOR INFORMATION, IF APPLICABLE. SUBSURFACE UTILITY LOCATES HAVE NOT BEEN FIELD VERIFIED, ACTUAL UTILITIES ARE SUBJECT TO CHANGE AND UNMARKED, UNKNOWN UTILITIES SHOULD BE LOCATED IN THE FIELD PRIOR TO GROUND DISTURBANCES. COORDINATE WITH NAVAJO TRIBAL UTILITY AUTHORITY (NTUA) IN CHINLE, AZ, AND ARIZONA ONE-CALL UTILITY LOCATE.



4221 BALLOON PARK RD NE
ALBUQUERQUE, NM 87109
TEL: (505) 821-1801



DRAFT

PROJECT:
**CHINLE WWTP
BIOSOLIDS DISPOSAL
NOT FOR CONSTRUCTION**



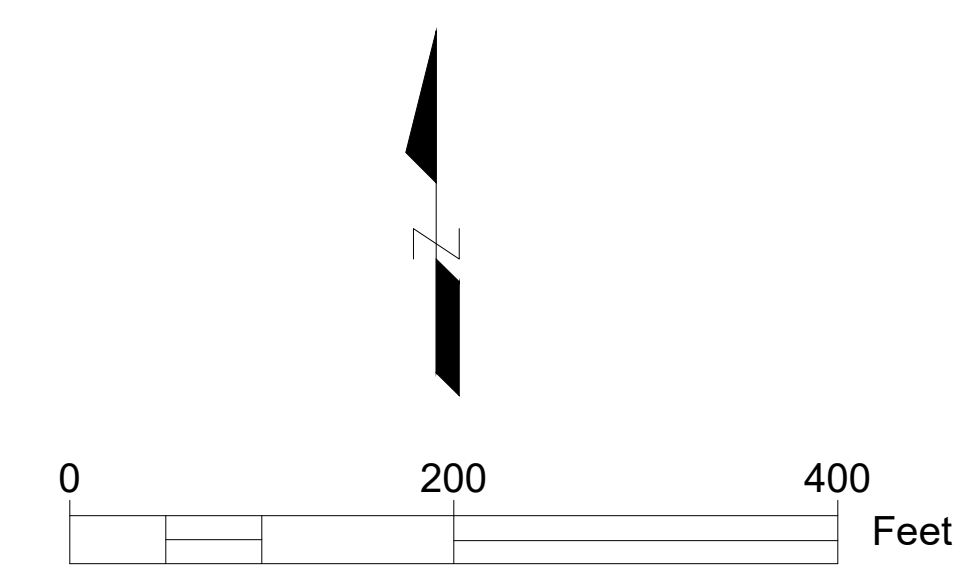
**NAVAJO TRIBAL UTILITY
AUTHORITY**
PO BOX 170
FT. DEFIANCE, AZ 86504
WSP PROJECT No:
2151700052

REVISIONS			
NO.	DATE	BY	APPROVED

DESIGNED BY:	WSP -
DRAWN BY:	WSP -
CHECKED BY:	WSP -
APPROVED BY:	WSP -
DATE:	XX/XX/2023

SHEET TITLE:
**EXISTING
CONDITIONS
SITE PLAN**

SHEET NUMBER:	REV. #
C-100	
SHEET 3 OF XX SHEETS	



A:\consulting\projects\21-517-00051.NTUA.HPP.Chinle.WWF.Chinle.Biosolids.Disposal_CAD\4.C-101_EXISTING_TOPOGRAPHIC_SITE_MAP.dwg



SITE NOTES:

SHEET GENERAL NOTES:

- UTILITIES ILLUSTRATED ON PLAN ARE PRESENTED FOR CONTRACTOR INFORMATION, IF APPLICABLE. SUBSURFACE UTILITY LOCATES HAVE NOT BEEN FIELD VERIFIED, ACTUAL UTILITIES ARE SUBJECT TO CHANGE AND UNMARKED, UNKNOWN UTILITIES SHOULD BE LOCATED IN THE FIELD PRIOR TO GROUND DISTURBANCES. COORDINATE WITH NAVAJO TRIBAL UTILITY AUTHORITY (NTUA) IN CHINLE, AZ, AND ARIZONA ONE-CALL UTILITY LOCATE.



4221 BALLOON PARK RD NE
ALBUQUERQUE, NM 87109
TEL: (505) 821-1801



DRAFT

PROJECT:
**CHINLE WWTP
BIOSOLIDS DISPOSAL
NOT FOR CONSTRUCTION**



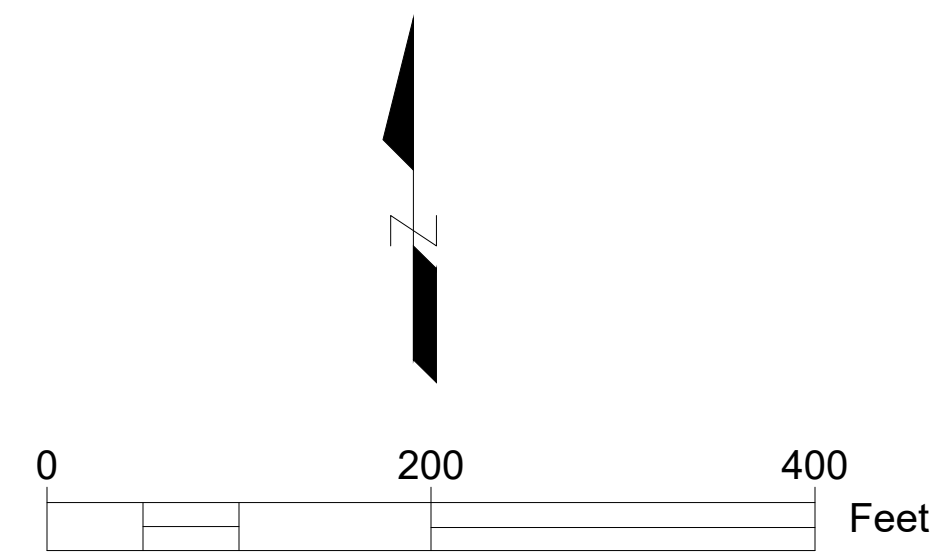
**NAVAJO TRIBAL UTILITY
AUTHORITY**
PO BOX 170
FT. DEFIANCE, AZ 86504
WSP PROJECT No:
2151700052

REVISIONS			
NO.	DATE	BY	APPROVED

DESIGNED BY:	WSP --
DRAWN BY:	WSP --
CHECKED BY:	WSP --
APPROVED BY:	WSP --
DATE:	XX/XX/2023

SHEET TITLE:
**EXISTING
TOPOGRAPHIC
SITE MAP**

SHEET NUMBER:	REV. #
C-101	
SHEET 4 OF XX SHEETS	



A:\consulting\projects\21\21-517-00051\NTUA HPP Chinle WWF Chinle Biosolids Disposal_CAD\5.C-200_DEBRI AND SLUDGE STAGING AREAS.dwg



NOTES:

- ① TEMPORARY STOCKPILE AREA FOR SOIL AND DEBRIS
- ② TEMPORARY STOCKPILE AREA FOR SOIL AND DEBRIS. REMOVE EXISTING FENCE AND INSTALL NEW FENCE IN THIS AREA.

SHEET GENERAL NOTES:

- 1. UTILITIES ILLUSTRATED ON PLAN ARE PRESENTED FOR CONTRACTOR INFORMATION, IF APPLICABLE. SUBSURFACE UTILITY LOCATES HAVE NOT BEEN FIELD VERIFIED, ACTUAL UTILITIES ARE SUBJECT TO CHANGE AND UNMARKED, UNKNOWN UTILITIES SHOULD BE LOCATED IN THE FIELD PRIOR TO GROUND DISTURBANCES. COORDINATE WITH NAVAJO TRIBAL UTILITY AUTHORITY (NTUA) IN CHINLE, AZ, AND ARIZONA ONE-CALL UTILITY LOCATE.



4221 BALLOON PARK RD NE
ALBUQUERQUE, NM 87109
TEL: (505) 821-1801



DRAFT

PROJECT:
**CHINLE WWTP
BIOSOLIDS DISPOSAL
NOT FOR CONSTRUCTION**



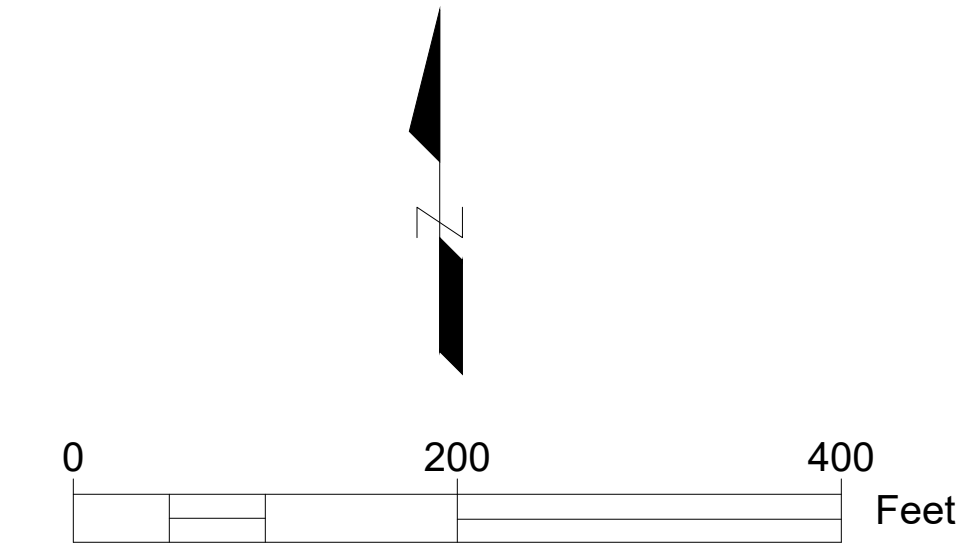
**NAVAJO TRIBAL UTILITY
AUTHORITY**
PO BOX 170
FT. DEFIANCE, AZ 86504
WSP PROJECT No:
2151700052

REVISIONS			
NO.	DATE	BY	APPROVED

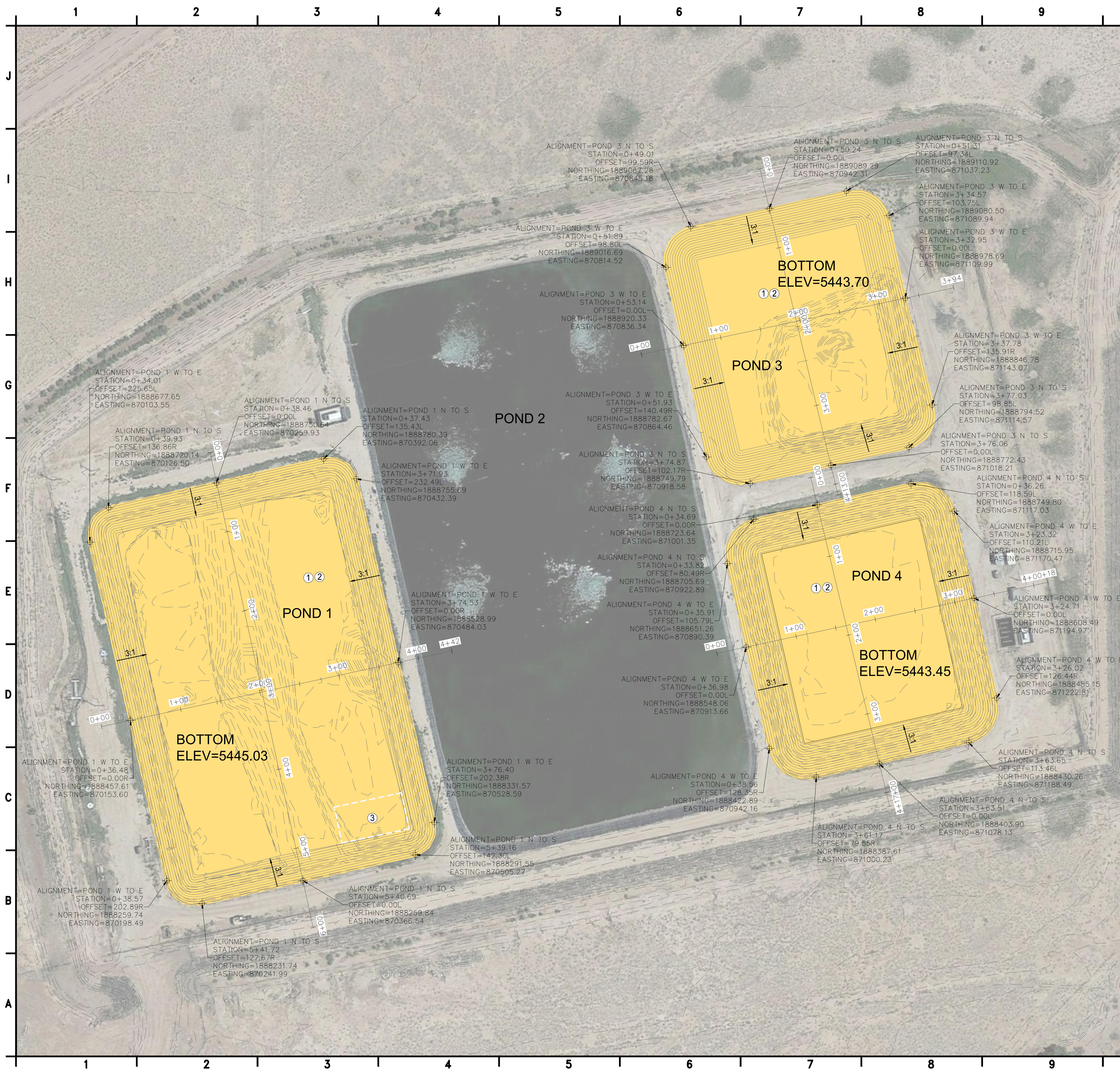
DESIGNED BY:	WSP -
DRAWN BY:	WSP -
CHECKED BY:	WSP -
APPROVED BY:	WSP -
DATE:	XX/XX/2023

SHEET TITLE:
**DEBRIS AND SLUDGE
STAGING AREAS**

SHEET NUMBER:	REV. #
C-200	
SHEET 5 OF XX SHEETS	



A:\consulting\projects\21\21-517-00051\NTUA HPP Chinle WWF Chinle Biosolids Disposal_CAD\6.C-300_GRADING PLAN.dwg



NOTES:

- ① RESTORE PONDS 1, 3, AND 4 TO AS-BUILT DIMENSIONS AND ELEVATIONS
- ② REMOVE ABANDONED PIPING, ROCK, AND CONCRETE STRUCTURES FROM PONDS 1, 3, AND 4. STORE TEMPORARILY ON-SITE FOR LATER DISPOSAL IN SOUTHERN PORTION OF CELL #1
- ③ DEBRIS DISPOSAL AREA



4221 BALLOON PARK RD NE
ALBUQUERQUE, NM 87109
TEL: (505) 821-1801

SHEET GENERAL NOTES:

- 1. UTILITIES ILLUSTRATED ON PLAN ARE PRESENTED FOR CONTRACTOR INFORMATION, IF APPLICABLE. SUBSURFACE UTILITY LOCATES HAVE NOT BEEN FIELD VERIFIED. ACTUAL UTILITIES ARE SUBJECT TO CHANGE AND UNMARKED. UNKNOWN UTILITIES SHOULD BE LOCATED IN THE FIELD PRIOR TO GROUND DISTURBANCES. COORDINATE WITH NAVAJO TRIBAL UTILITY AUTHORITY (NTUA) IN CHINLE, AZ, AND ARIZONA ONE-CALL UTILITY LOCATE.

LEGEND

- EXISTING GROUND TOPOGRAPHIC CONTOUR
- PROPOSED GRADING TOPOGRAPHIC CONTOUR



PROJECT:
**CHINLE WWTP
BIOSOLIDS DISPOSAL
NOT FOR CONSTRUCTION**



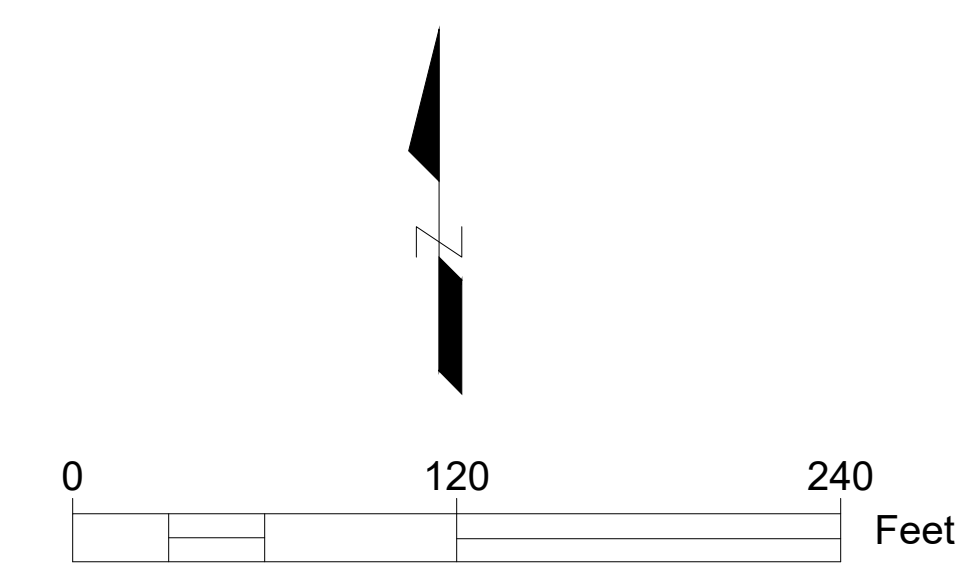
**NAVAJO TRIBAL UTILITY
AUTHORITY**
PO BOX 170
FT. DEFIANCE, AZ 86504
WSP PROJECT No:
2151700052

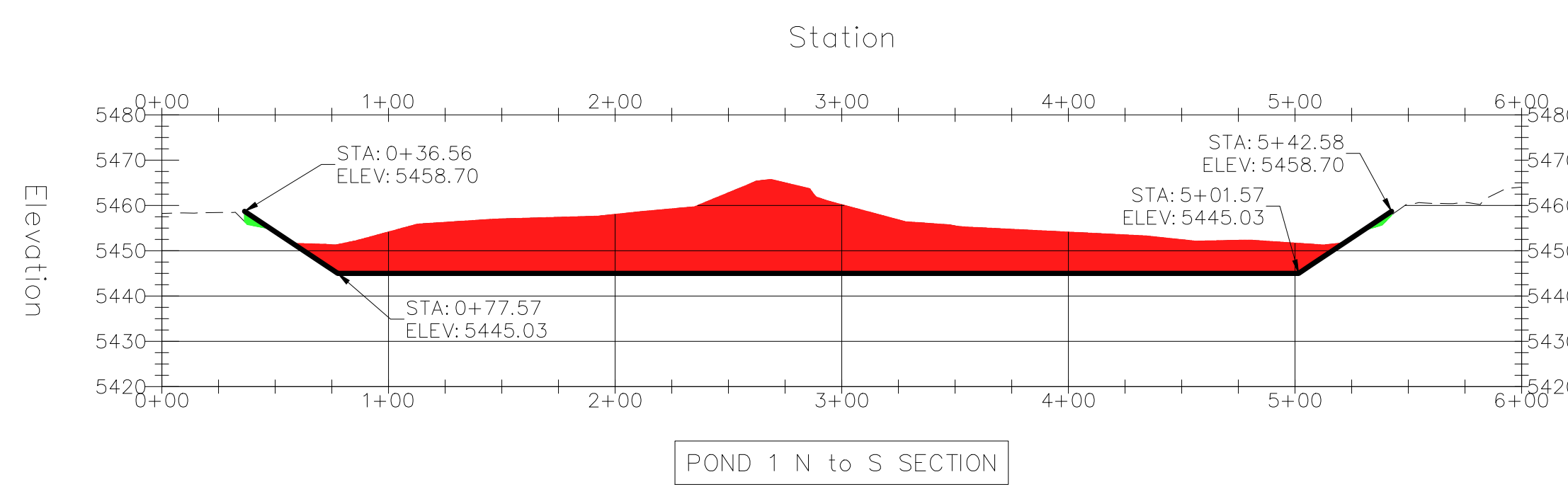
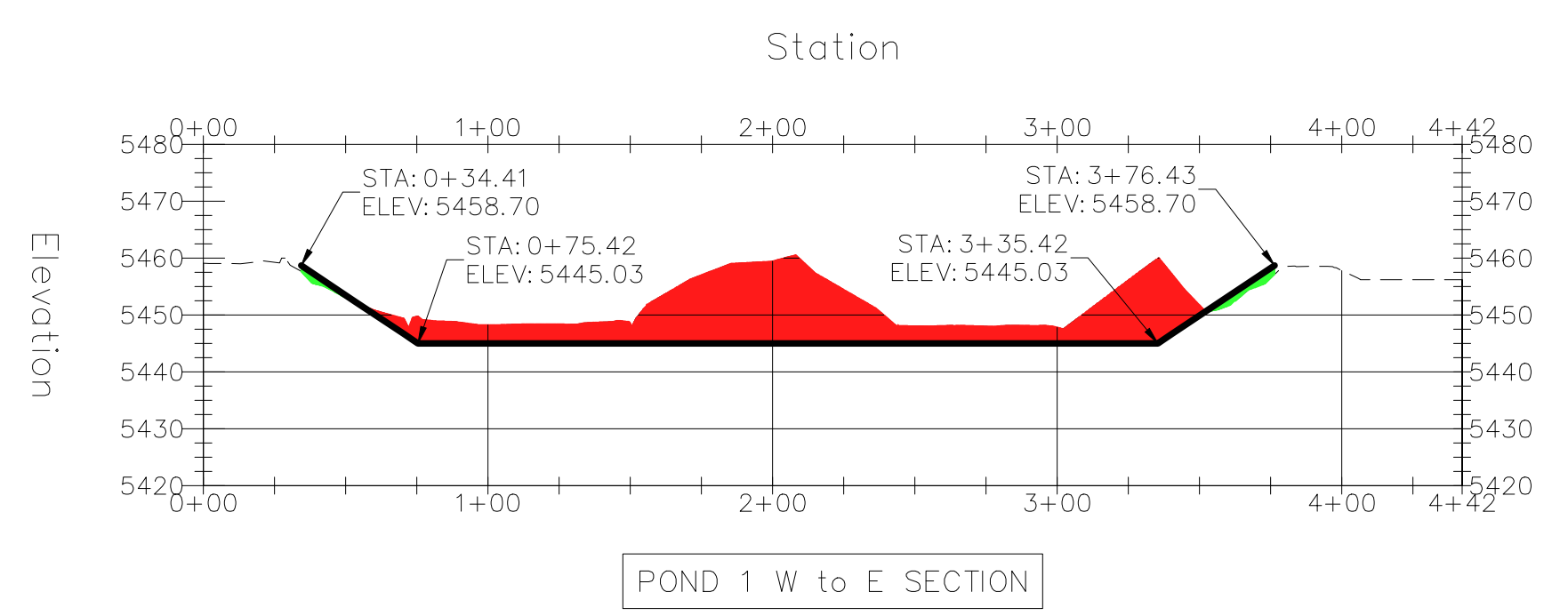
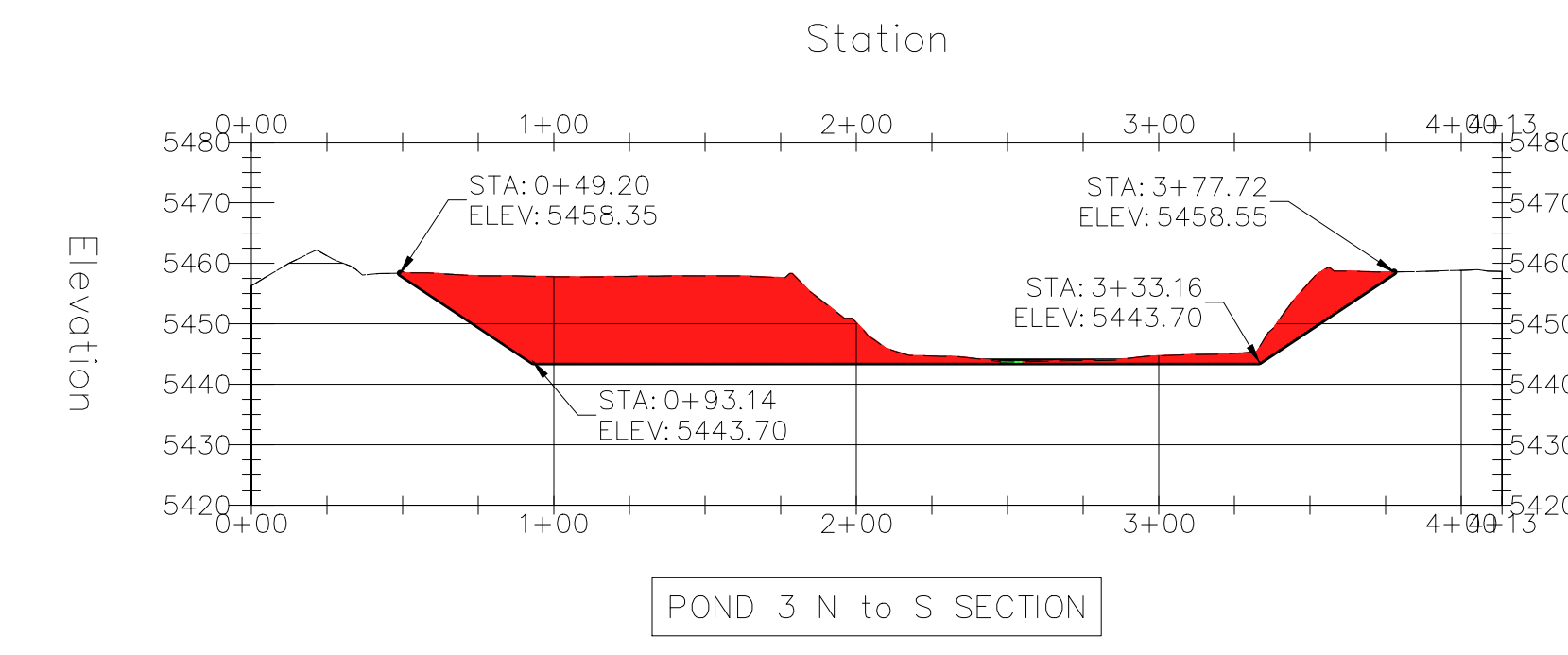
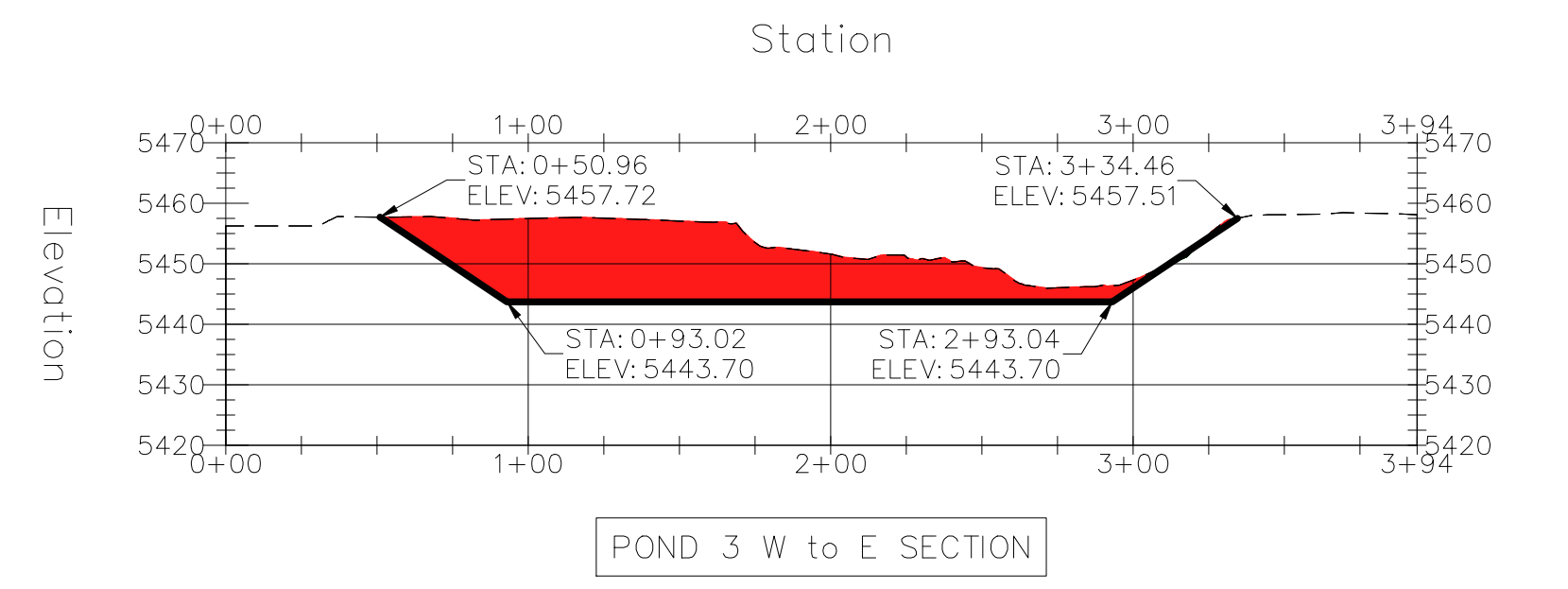
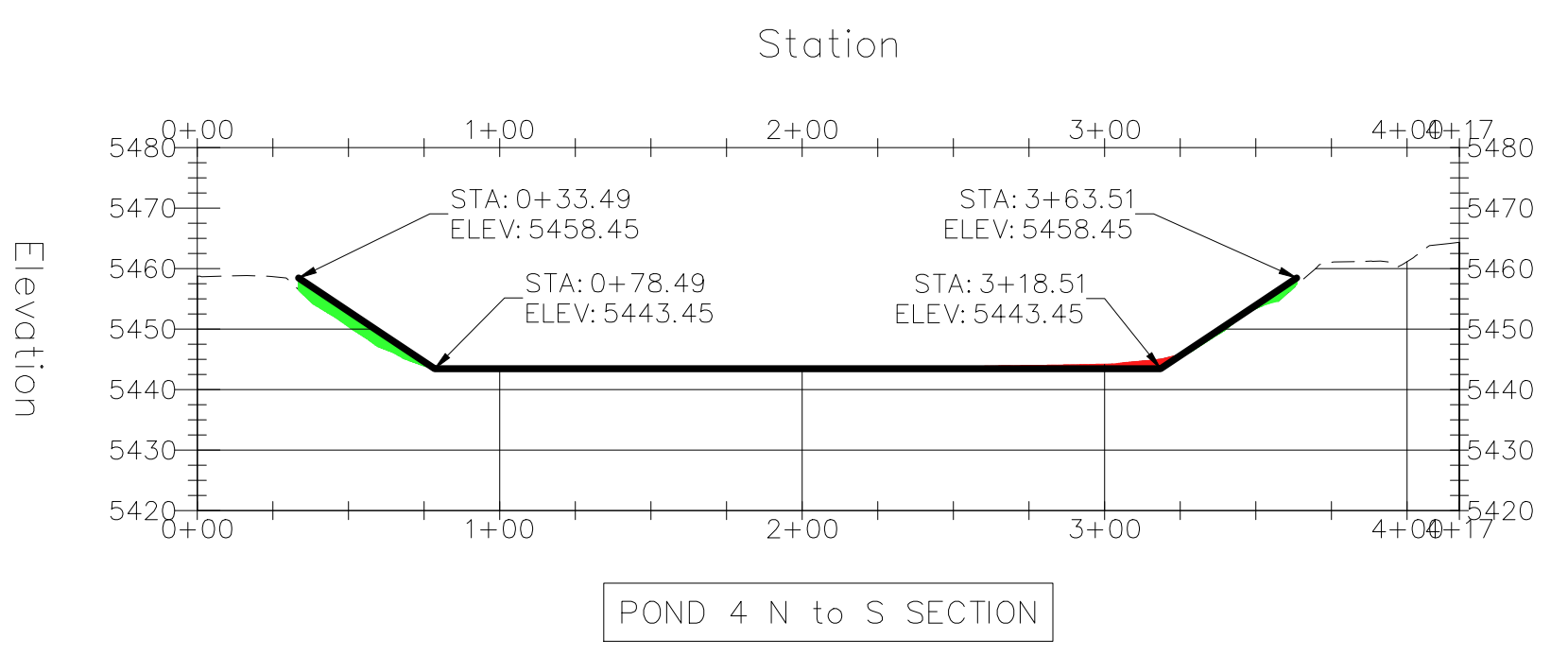
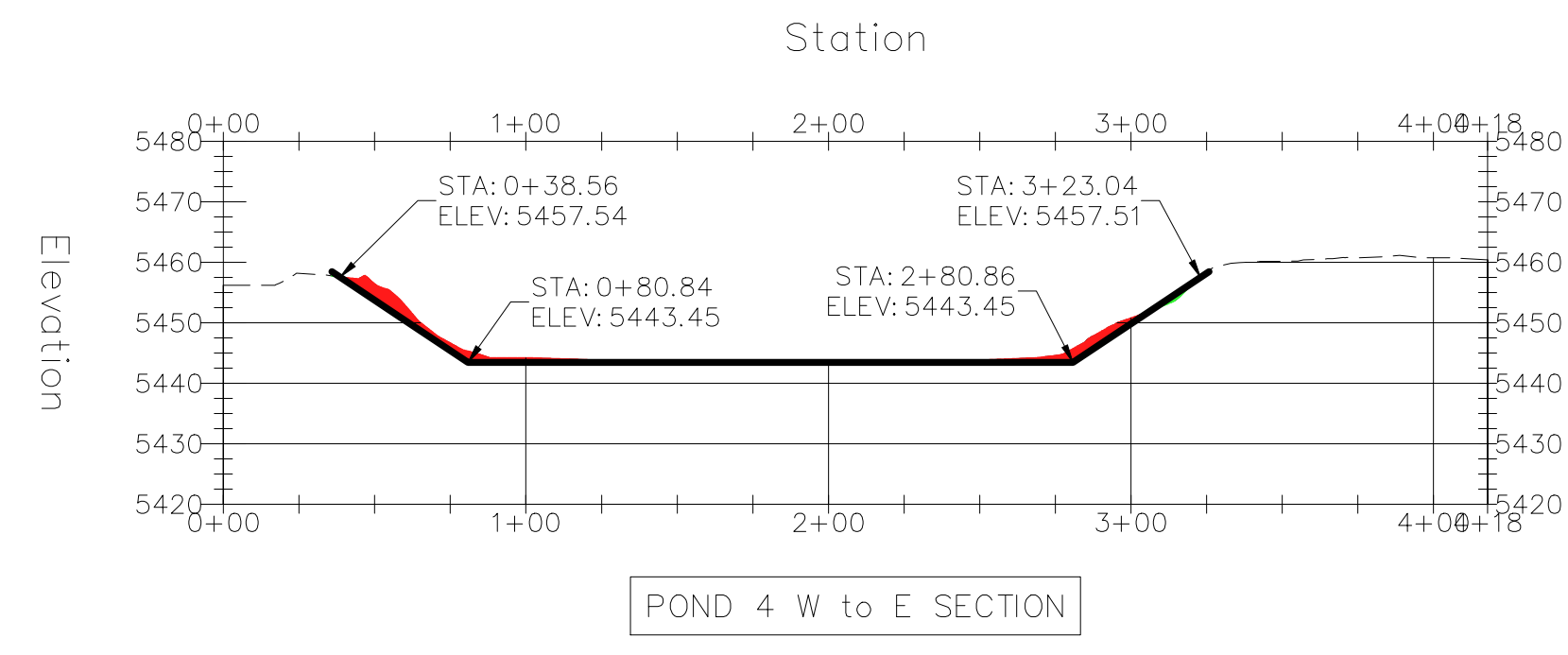
REVISIONS			
NO.	DATE	BY	APPROVED

DESIGNED BY:	WSP -
DRAWN BY:	WSP -
CHECKED BY:	WSP -
APPROVED BY:	WSP -
DATE:	XX/XX/2023

SHEET TITLE:
GRADING PLAN

SHEET NUMBER:	REV. #
C-300	
SHEET 6 OF XX SHEETS	





LEGEND

- EXISTING GROUND TOPOGRAPHIC CONTOUR
- PROPOSED GRADING TOPOGRAPHIC CONTOUR
- PROPOSED FILL
- PROPOSED CUT

wsp

4221 BALLOON PARK RD NE
ALBUQUERQUE, NM 87109
TEL: (505) 821-1801

DRAFT

PROJECT:
**CHINLE WWTP
BIOSOLIDS DISPOSAL
NOT FOR CONSTRUCTION**



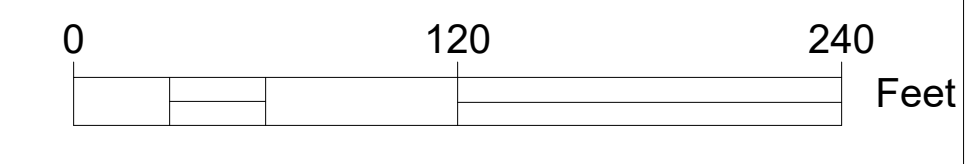
**NAVAJO TRIBAL UTILITY
AUTHORITY**
PO BOX 170
FT. DEFIANCE, AZ 86504
WSP PROJECT No:
2151700052

REVISIONS			
NO.	DATE	BY	APPROVED

DESIGNED BY:	WSP -
DRAWN BY:	WSP -
CHECKED BY:	WSP -
APPROVED BY:	WSP -
DATE:	XX/XX/2023

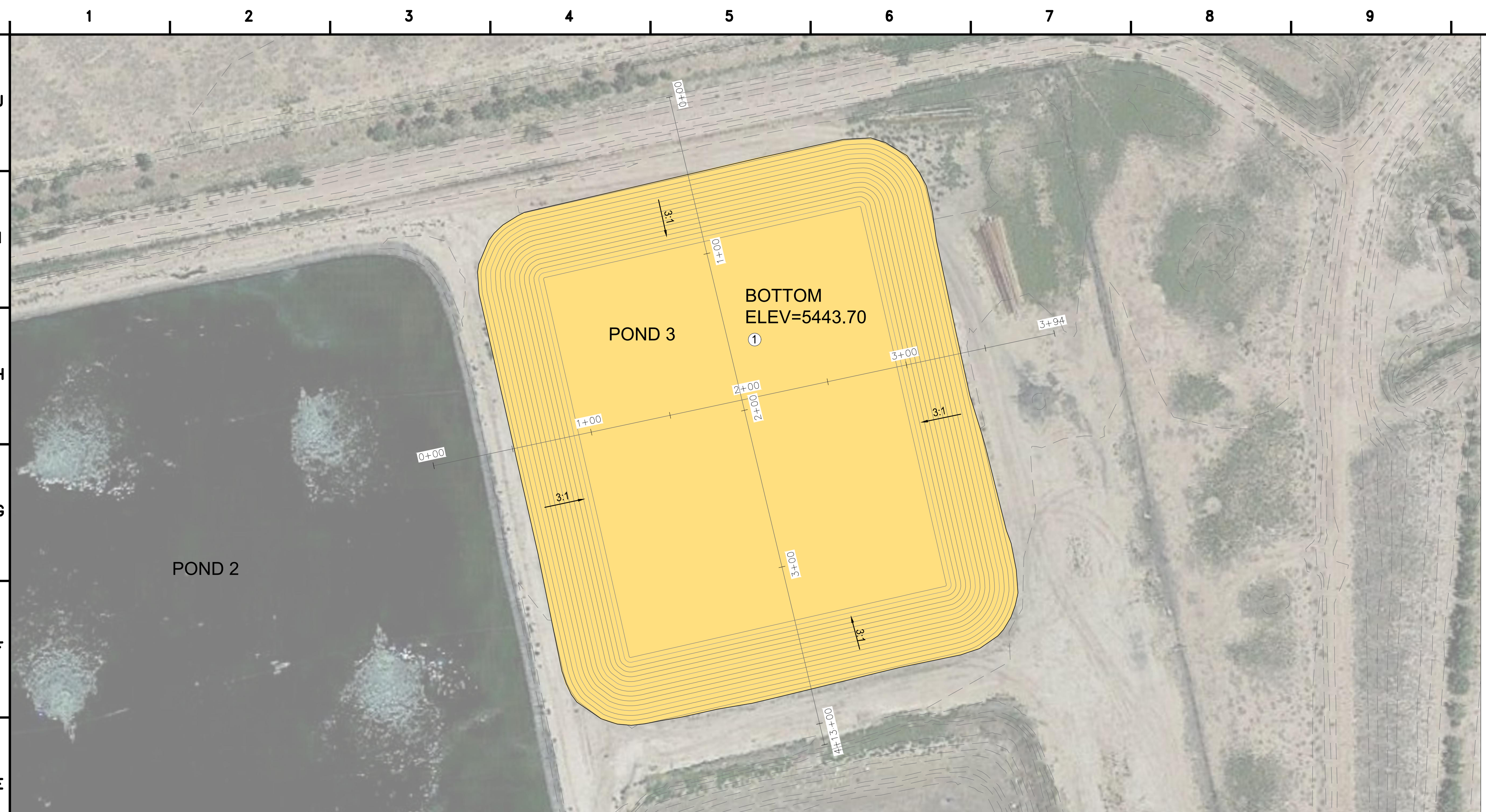
SHEET TITLE:
GRADING PROFILES

SHEET NUMBER:	REV. #
C-301	
SHEET 7 OF XX SHEETS	



A:\consulting\projects\21\21-517-00051\NTUA HPP Chinle WWF\Chinle Biosolids Disposal_CAD\7-C-301_GRADING PROFILES.dwg

A:\consulting\projects\21-517-00051\NTUA HPP Chinle Biosolids Disposal\CAD\8.C-400_CELL 3 BACKFILL PLAN & PROFILE.dwg



NOTES:

- ① INSTALL 60 MIL HDPE LINER CELL #3. SEE DETAILS ON SHEET C-600
- ② PREPARE SUB-GRADE PER GEOTECHNICAL REPORT
- ③ TRUCK 3,800 CY OF SLUDGE FROM KAYENTA WWTP
- ④ TRUCK 3,000 CY OF SLUDGE FROM WINDOW ROCK WWTP

SHEET GENERAL NOTES:

- 1. UTILITIES ILLUSTRATED ON PLAN ARE PRESENTED FOR CONTRACTOR INFORMATION, IF APPLICABLE. SUBSURFACE UTILITY LOCATES HAVE NOT BEEN FIELD VERIFIED, ACTUAL UTILITIES ARE SUBJECT TO CHANGE AND UNMARKED, UNKNOWN UTILITIES SHOULD BE LOCATED IN THE FIELD PRIOR TO GROUND DISTURBANCES. COORDINATE WITH NAVAJO TRIBAL UTILITY AUTHORITY (NTUA) IN CHINLE, AZ, AND ARIZONA ONE-CALL UTILITY LOCATE.



4221 BALLOON PARK RD NE
ALBUQUERQUE, NM 87109
TEL: (505) 821-1801



DRAFT

PROJECT:
**CHINLE WWTP
BIOSOLIDS DISPOSAL
NOT FOR CONSTRUCTION**



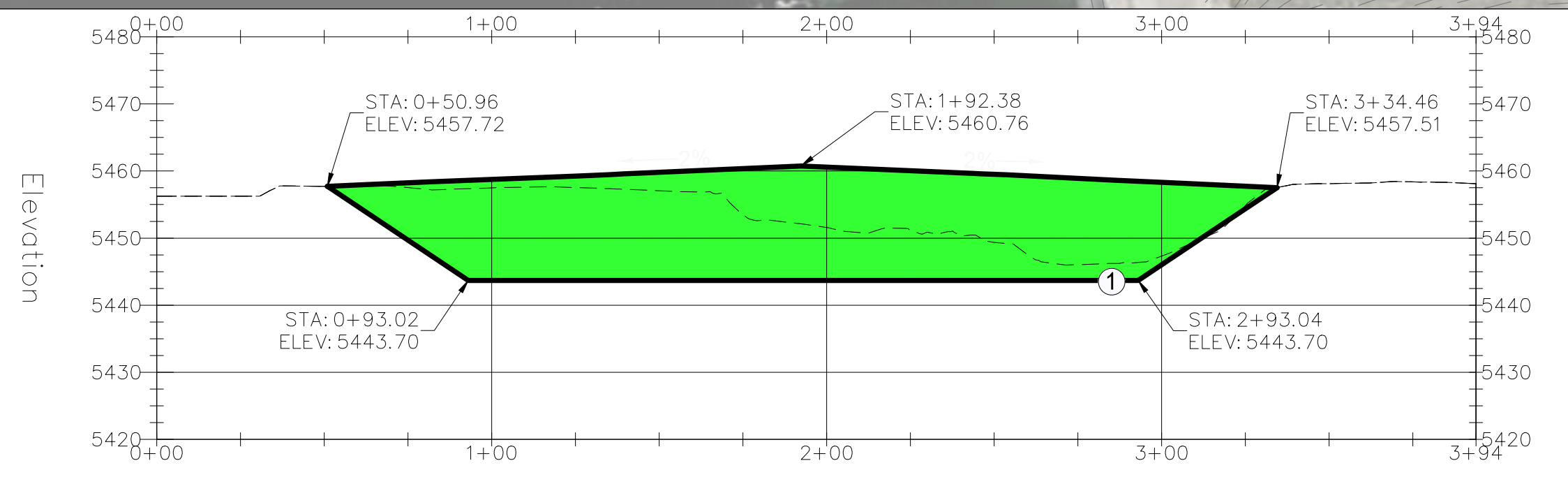
**NAVAJO TRIBAL UTILITY
AUTHORITY**
PO BOX 170
FT. DEFIANCE, AZ 86504
WSP PROJECT No:
2151700052

LEGEND - SECTION VIEW

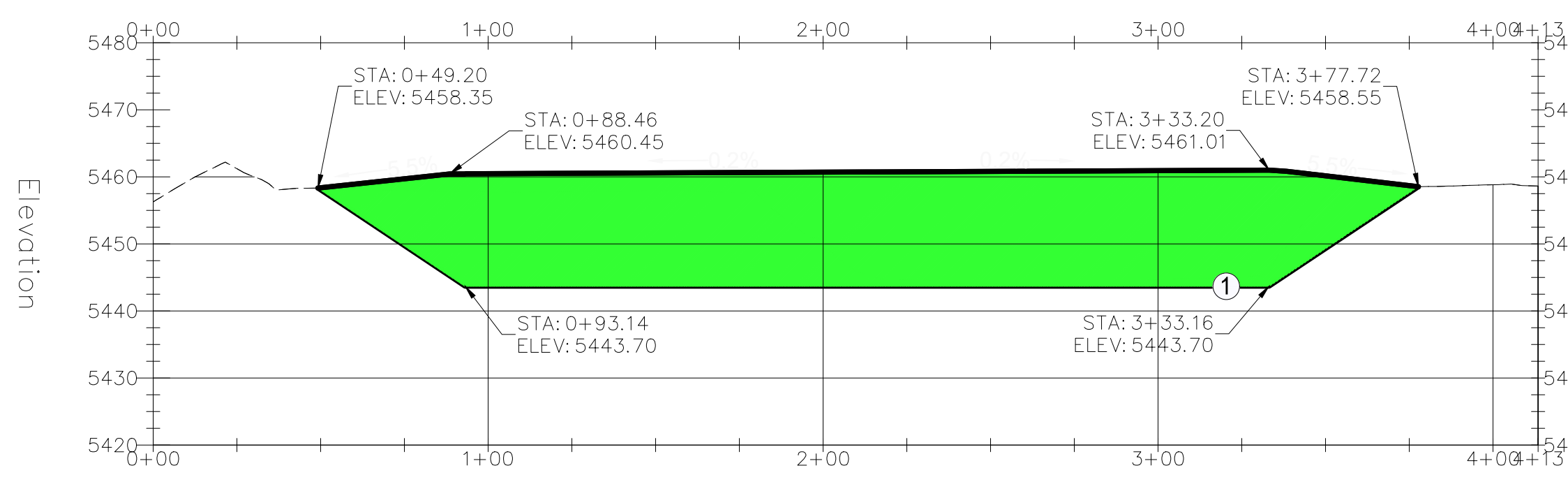
- EXISTING GROUND TOPOGRAPHIC CONTOUR
- PROPOSED GRADING TOPOGRAPHIC CONTOUR

LEGEND - PLAN VIEW

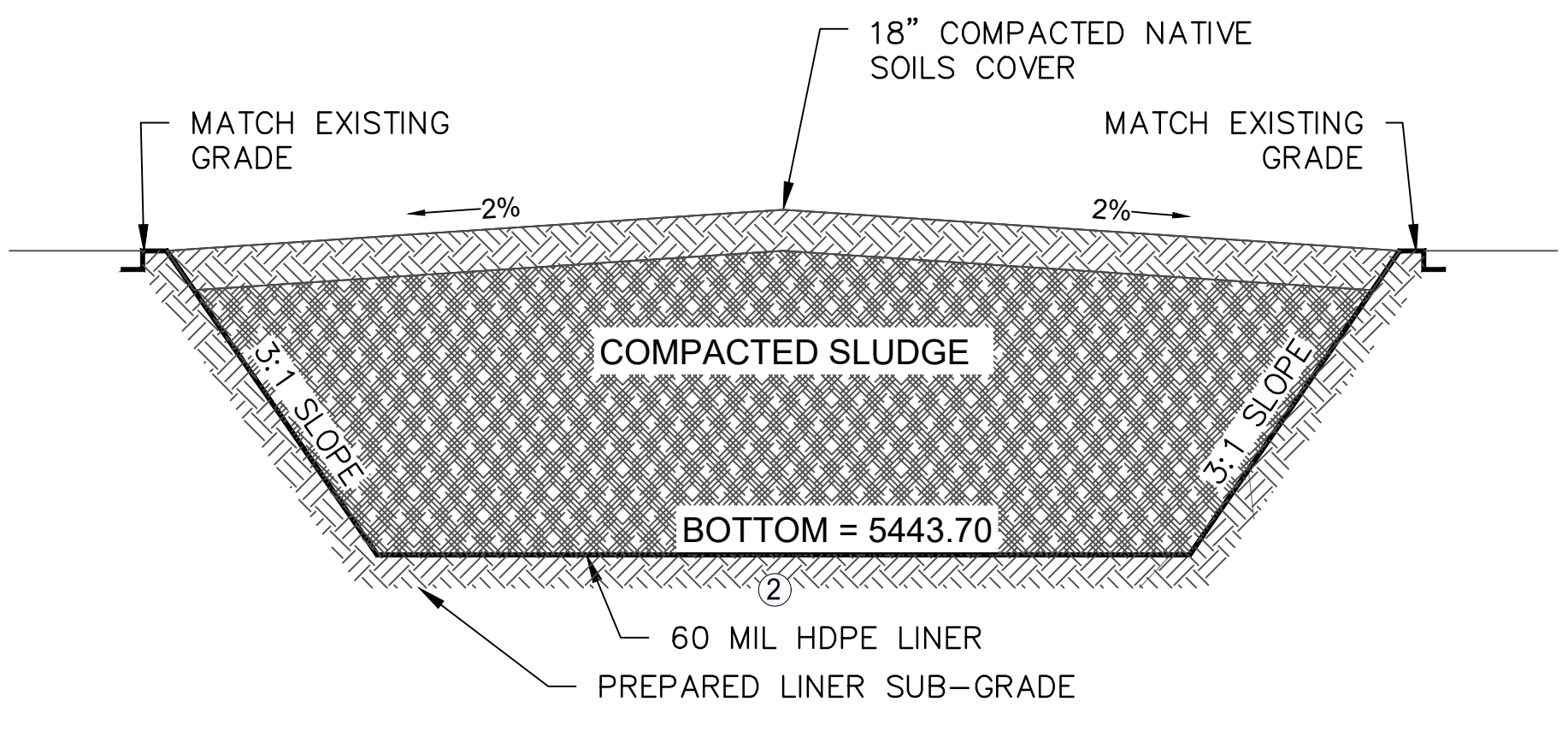
- EXISTING GROUND TOPOGRAPHIC CONTOUR
- PROPOSED GRADING TOPOGRAPHIC CONTOUR
- PROPOSED FILL



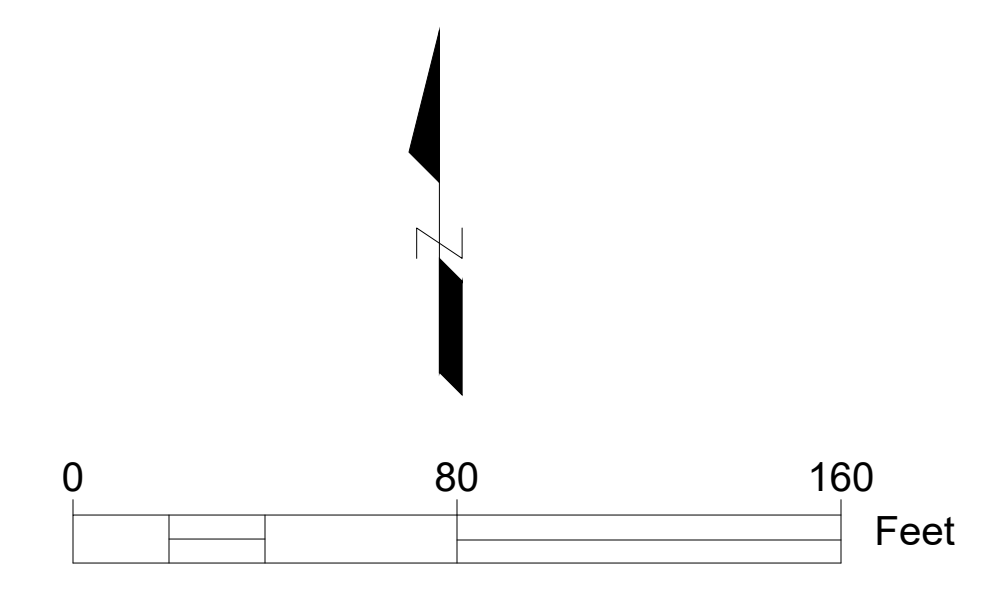
POND 3 W to E SECTION



POND 3 N to S SECTION



POND 3 - TYPICAL SECTION
N.T.S.



REVISIONS			
NO.	DATE	BY	APPROVED

DESIGNED BY:	WSP -
DRAWN BY:	WSP -
CHECKED BY:	WSP -
APPROVED BY:	WSP -
DATE:	XX/XX/2023

SHEET TITLE:
**POND 3 BACKFILL
PLAN & SECTIONS**

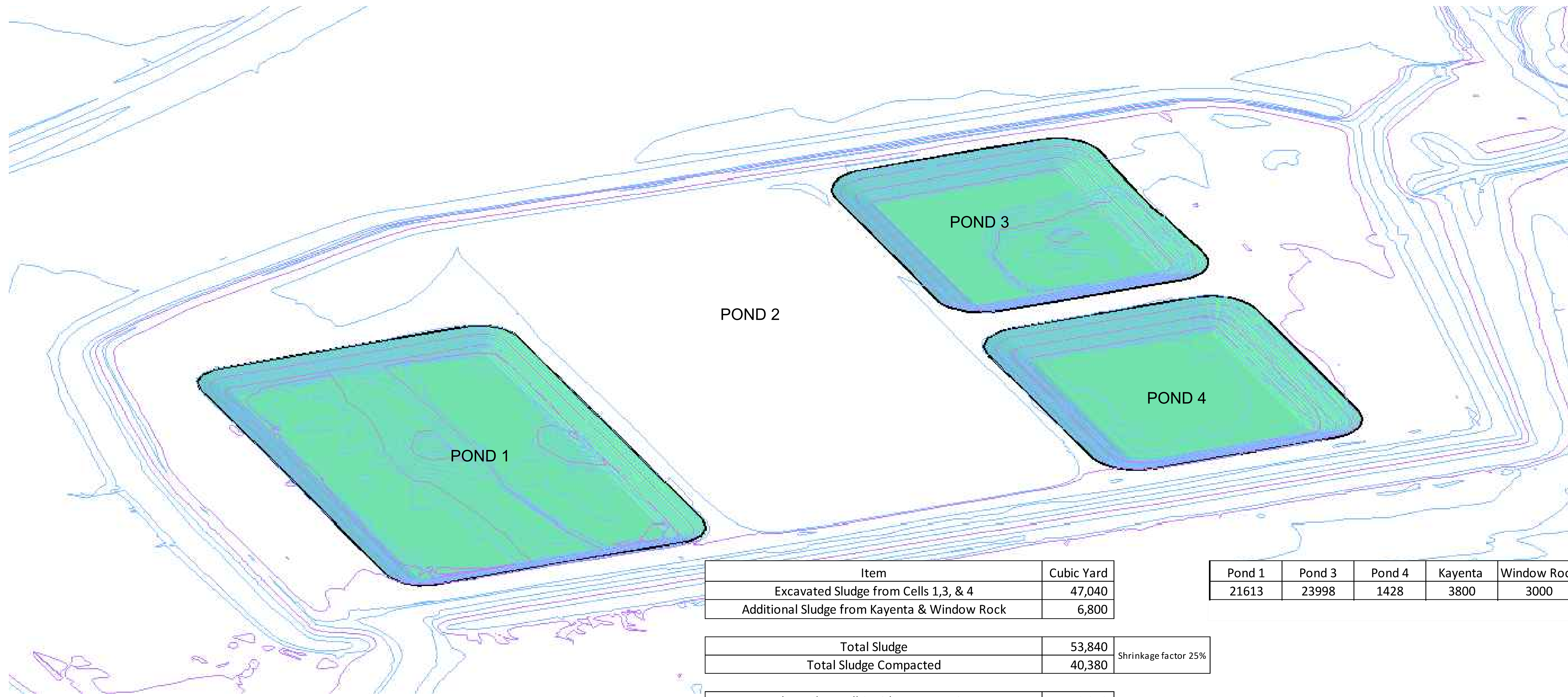
SHEET NUMBER:	REV. #
C-400	
SHEET 8	OF XX SHEETS

Cut/Fill Summary

Name	Cut Factor	Fill Factor	2d Area	Cut	Fill	Net
Vol. Pond 4	1.00	1.00	93792 Sq. Ft.	2211.42 Cu. Yd.	783.40 Cu. Yd.	1428.02 Cu. Yd.<Cut>
Vol. Pond 1	1.00	1.00	171803 Sq. Ft.	22996.79 Cu. Yd.	1383.51 Cu. Yd.	21613.28 Cu. Yd.<Cut>
Vol. Pond 3	1.00	1.00	91917 Sq. Ft.	24008.30 Cu. Yd.	9.88 Cu. Yd.	23998.42 Cu. Yd.<Cut>
Totals			357512 Sq. Ft.	49216.51 Cu. Yd.	2176.79 Cu. Yd.	47039.72 Cu. Yd.<Cut>

Cut/Fill Summary

Name	Cut Factor	Fill Factor	2d Area	Cut	Fill	Net
Vol. Pond 3 Fill Capacity (Proposed)	1.00	1.00	91917 Sq. Ft.	0.16 Cu. Yd.	40357.93 Cu. Yd.	40357.78 Cu. Yd.<Fill>
Totals			91917 Sq. Ft.	0.16 Cu. Yd.	40357.93 Cu. Yd.	40357.78 Cu. Yd.<Fill>



Item	Cubic Yard
Excavated Sludge from Cells 1,3, & 4	47,040
Additional Sludge from Kayenta & Window Rock	6,800

Total Sludge	53,840	Shrinkage factor 25%
Total Sludge Compacted	40,380	

Cleaned up Cell 3 with Cap Capacity	40,358
Difference in Capacity	
Cell 3 & Total Compacted Sludge	(22)

Pond 1	Pond 3	Pond 4	Kayenta	Window Rock	Total (yd ³)
21613	23998	1428	3800	3000	53840



4221 BALLOON PARK RD NE
ALBUQUERQUE, NM 87109
TEL: (505) 821-1801



DRAFT

PROJECT:
**CHINLE WWTP
BIOSOLIDS DISPOSAL
NOT FOR CONSTRUCTION**



**NAVAJO TRIBAL UTILITY
AUTHORITY**
PO BOX 170
FT. DEFIANCE, AZ 86504
WSP PROJECT No:
2151700052

REVISIONS			
NO.	DATE	BY	APPROVED

DESIGNED BY:	WSP -
DRAWN BY:	WSP -
CHECKED BY:	WSP -
APPROVED BY:	WSP -
DATE:	XX/XX/2023

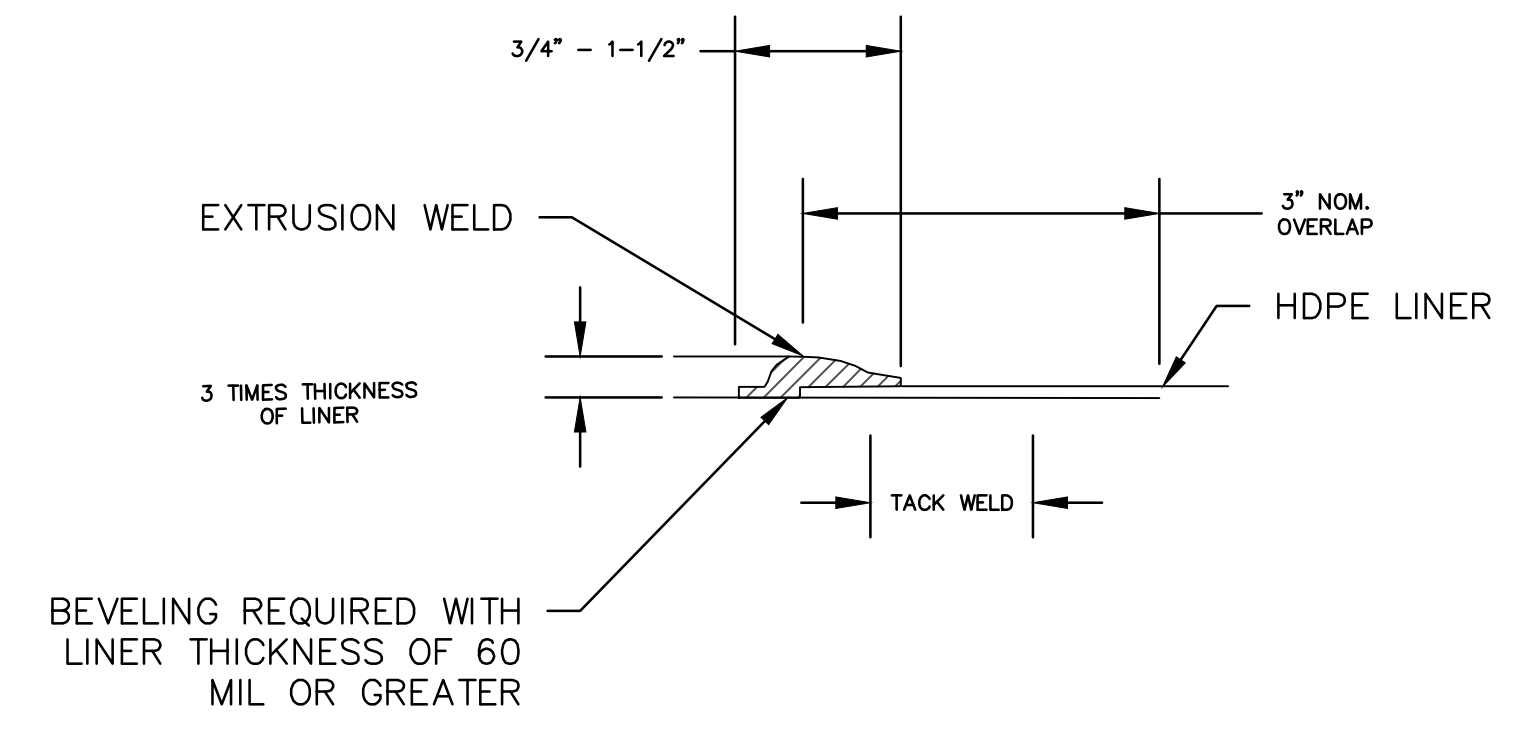
SHEET TITLE:
**QUANTITIES
TABLES**

SHEET NUMBER:	REV. #
C-500	
SHEET 9 OF XX SHEETS	

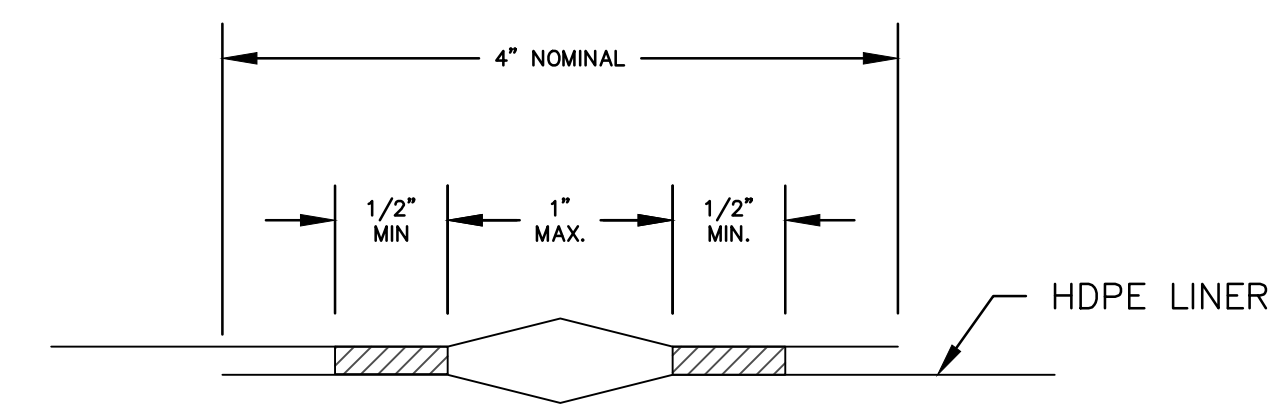
A:\consulting\projects\21\21-517-00051\NTUA HPP\Chinle WWF\Chinle Biosolids Disposal\CAD\10.C-600-HDPE LINER DETAILS.dwg

1 2 3 4 5 6 7 8 9 10 11 12

J
I
H
G
F
E
D
C
B
A

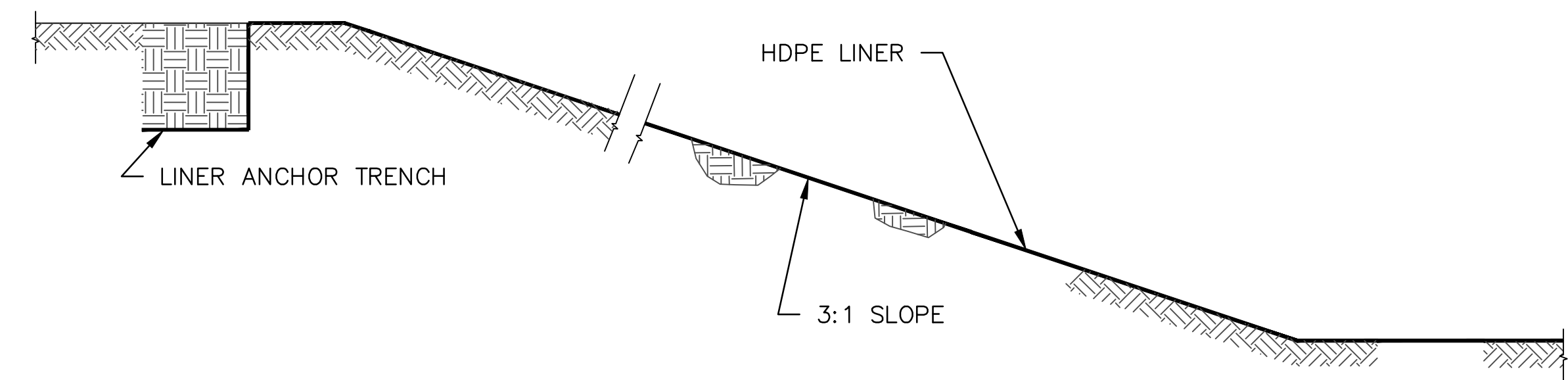


EXTRUSION WELD



HDPE FIELD SPLICE

LINER DETAILS
N.T.S.



LINER DETAIL
N.T.S.



4221 BALLOON PARK RD NE
ALBUQUERQUE, NM 87109
TEL: (505) 821-1801



DRAFT

PROJECT:
**CHINLE WWTP
BIOSOLIDS DISPOSAL**
NOT FOR CONSTRUCTION



**NAVAJO TRIBAL UTILITY
AUTHORITY**
PO BOX 170
FT. DEFIANCE, AZ 86504
WSP PROJECT No:
2151700052

REVISIONS			
NO.	DATE	BY	APPROVED

DESIGNED BY:	WSP -
DRAWN BY:	WSP -
CHECKED BY:	WSP -
APPROVED BY:	WSP -
DATE:	XX/XX/2023

SHEET TITLE:
**HDPE LINER
DETAILS**

SHEET NUMBER:	REV. #
C-600	
SHEET 10 OF XX SHEETS	

1 2 3 4 5 6 7 8 9 10 11 12