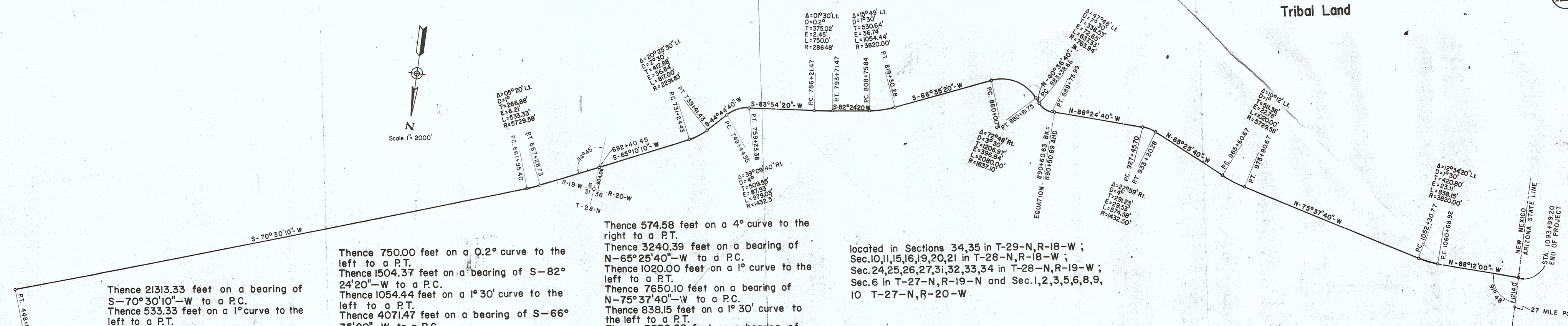
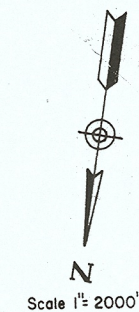


San Juan County  
Tribal Land

127



Thence 21313.33 feet on a bearing of S-70°30'10"-W to a P.C.  
Thence 533.33 feet on a 1° curve to the left to a P.T.  
Thence 6395.70 feet on a bearing of S-65°10'10"-W to a P.C.  
Thence 817.00 feet on a 2°30' curve left to a P.T.  
Thence 1002.92 feet on a bearing of S-44°44'40"-W to a P.C.  
Thence 979.03 feet on a 4° curve to the right to a P.T.  
Thence 2698.09 feet on a bearing of S-83°54'20"-W to a P.C.

Thence 750.00 feet on a 0.2° curve to the left to a P.T.  
Thence 1504.37 feet on a bearing of S-82°24'20"-W to a P.C.  
Thence 1054.44 feet on a 1°30' curve to the left to a P.T.  
Thence 4071.47 feet on a bearing of S-66°35'20"-W to a P.C.  
Thence 2080.00 feet on a 3°30' curve to the right to a P.T.  
Thence 256.91 feet on a bearing of N-40°36'40"-W to a P.C.  
Thence 637.33 feet on a 7°30' curve to the left to a P.T.  
Thence 3779.65 feet on a bearing of N-88°24'40"-W to a P.C.

Thence 574.58 feet on a 4° curve to the right to a P.T.  
Thence 3240.39 feet on a bearing of N-65°25'40"-W to a P.C.  
Thence 1020.00 feet on a 1° curve to the left to a P.T.  
Thence 7650.10 feet on a bearing of N-75°37'40"-W to a P.C.  
Thence 838.15 feet on a 1°30' curve to the left to a P.T.  
Thence 3330.28 feet on a bearing of N-88°12'00"-W to the end of project, a point on the N.Mex.—Ariz. State Line 1214.0' south of Mile Post No.27.  
Said tract is 20.721 miles long and has a total of 502.08 Acres across lands belonging to the Navajo Tribe of Indians in San Juan County, State of N.Mex. and

located in Sections 34,35 in T-29-N,R-18-W ;  
Sec.10,11,15,16,19,20,21 in T-28-N,R-18-W ;  
Sec.24,25,26,27,31,32,33,34 in T-28-N,R-19-W ;  
Sec.6 in T-27-N,R-19-N and Sec.1,2,3,5,6,8,9,  
10 T-27-N,R-20-W